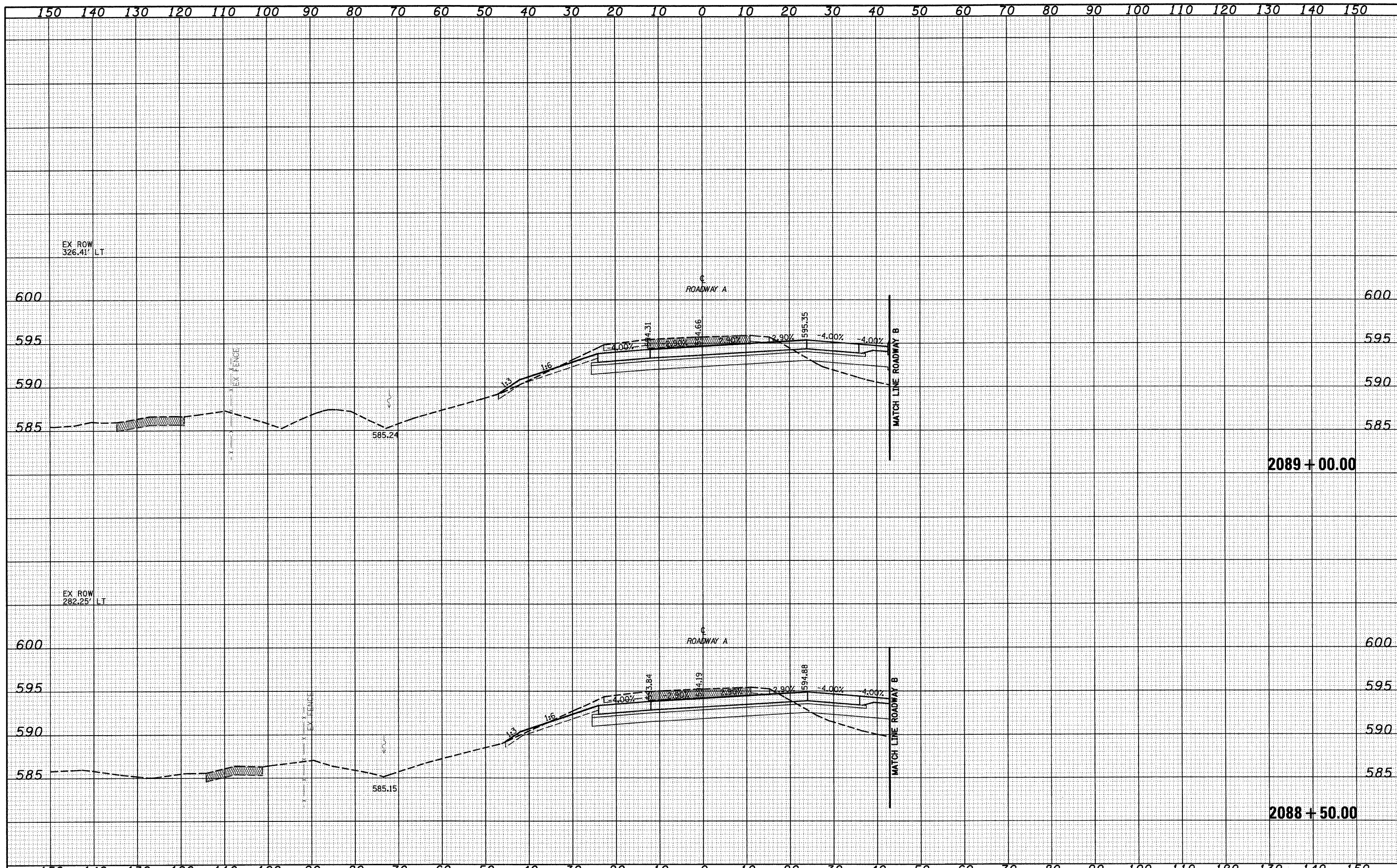


DATE	
BY	
SURVEYED	
TEMPLATE	
AREAS CHECKED	
NO.	

DATE	
BY	
ORIGINAL SURVEY	
NOTE BOOK	
AREAS CHECKED	
NO.	



FILE NAME =	USER NAME = l1nda	DESIGNED - JWS	REVISED -	STATE OF ILLINOIS DEPARTMENT OF TRANSPORTATION	CROSS SECTIONS SOUTH TRI LEVEL - ROADWAY A			F.A.I. RTE.	SECTION	COUNTY	TOTAL SHEETS	SHEET NO.
S:\Projects\103\10307251-70\10315 TriLevel.DWG		DRAWN - LEC	REVISED -					57/70	(25-3)R	EFFINGHAM	1416	740
PLOT SCALE = 20.00000' / IN.		CHECKED - BRM	REVISED -					CONTRACT NO. 74296				
PLOT DATE = 2/9/2010		DATE - 2-25-08	REVISED -					ILLINOIS FED. AID PROJECT				
				SCALE: 1"=10'			SHEET NO. 124 OF 125 SHEETS		STA. 2088+50.00 TO STA. 2089+00.00			