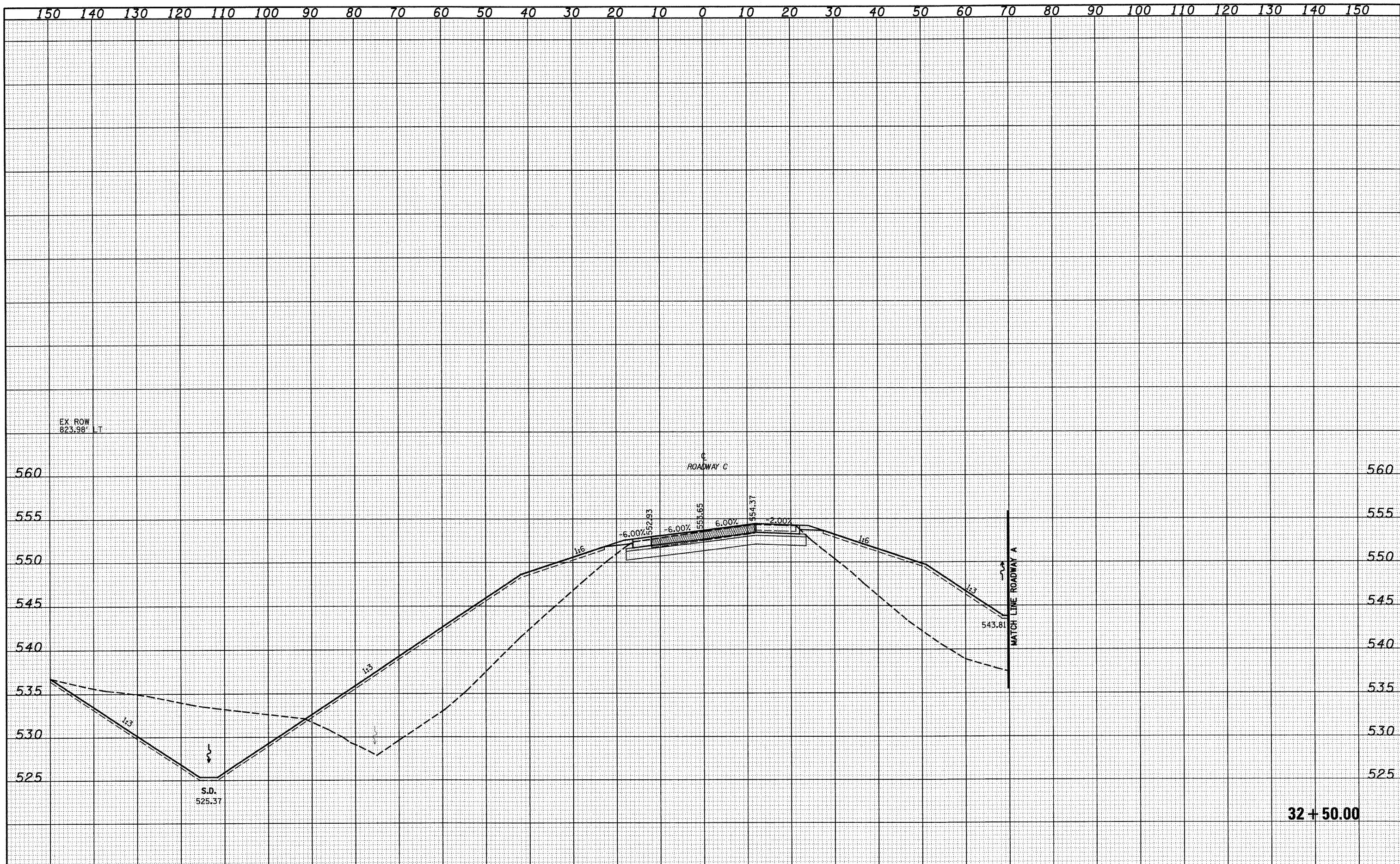


DATE	
BY	
FINAL SURVEY	
SURVEYED	
NOTE BOOK	
TEMPLATE	
AREAS	
AREAS CHECKED	
NO.	

DATE	
BY	
ORIGINAL SURVEY	
SURVEYED	
NOTE BOOK	
TEMPLATE	
AREAS	
AREAS CHECKED	
NO.	



32 + 50.00

FILE NAME =	USER NAME = lnda	DESIGNED - JWS	REVISED -	STATE OF ILLINOIS DEPARTMENT OF TRANSPORTATION	CROSS SECTIONS SOUTH TRI LEVEL - ROADWAY C		F.A.I. RTE.	SECTION	COUNTY	TOTAL SHEETS	SHEET NO.	
S:\Projects\403\000251\70.dgn\170000.dgn		DRAWN - LEC	REVISED -		SCALE: 1"=10'	SHEET NO. 8 OF 13 SHEETS	STA. 32+50.00 TO STA. 32+50.00	57/70	(25-3)R	EFFINGHAM	1416	749
PLOT SCALE = 20.00000' / IN.		CHECKED - BRM	REVISED -		FED. ROAD DIST. NO.		ILLINOIS FED. AID PROJECT		CONTRACT NO. 74296			
PLOT DATE = 2/9/2010		DATE - 2-25-08	REVISED -									