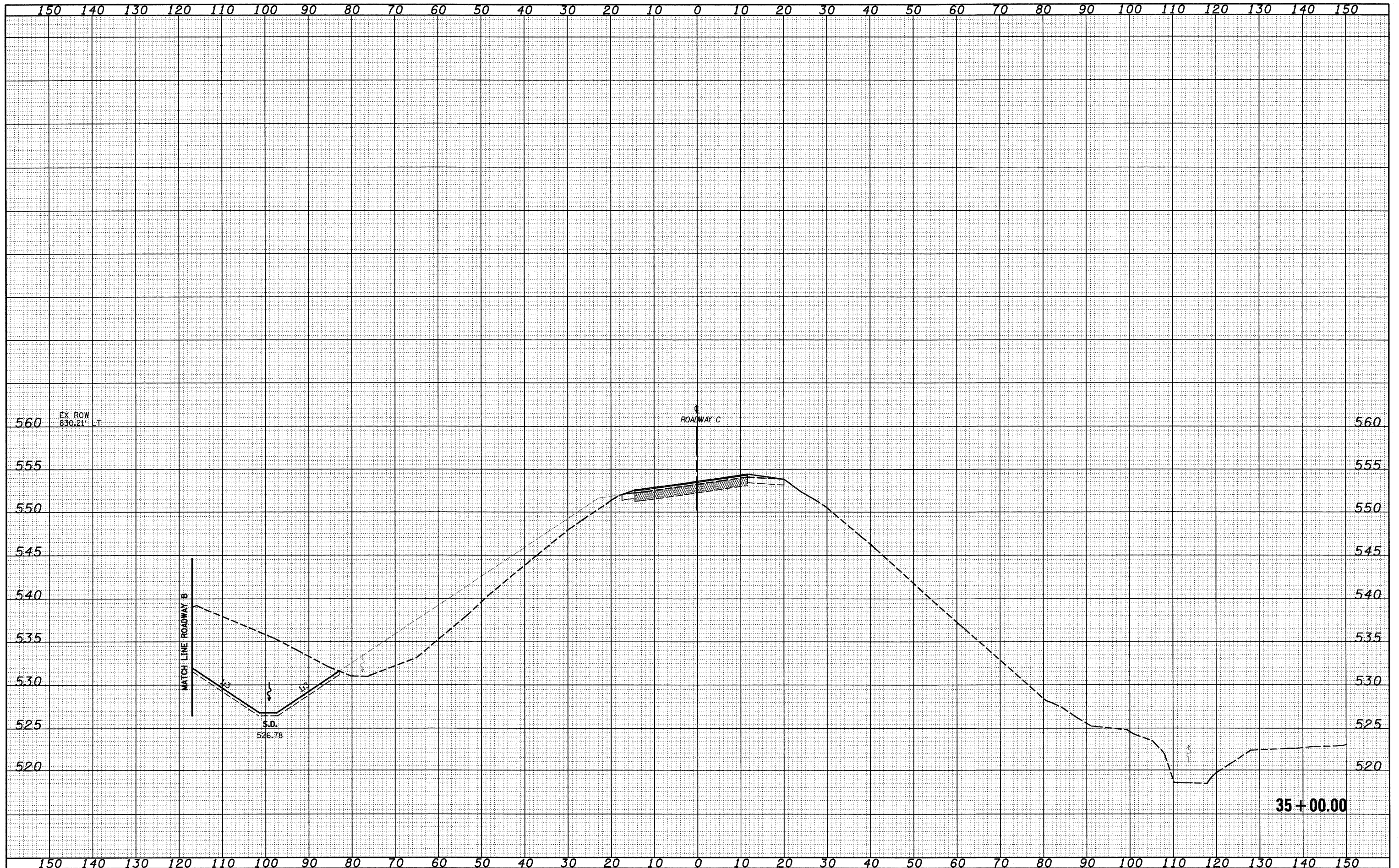


FINAL SURVEY	DATE
SURVEYED	BY
NOTE BOOK	
TEMPLATE	
AREAS	
CHECKED	
NO.	

ORIGINAL SURVEY	DATE
SURVEYED	BY
NOTE BOOK	
TEMPLATE	
AREAS	
CHECKED	
NO.	



FILE NAME = S:\Project\43\0007251-70.dwg
 USER NAME = londa

DESIGNED - JWS
 DRAWN - LEC
 CHECKED - BRM
 DATE - 2-25-08

REVISED -
 REVISED -
 REVISED -
 REVISED -

STATE OF ILLINOIS
 DEPARTMENT OF TRANSPORTATION

CROSS SECTIONS SOUTH TRI LEVEL - ROADWAY C
 SCALE: 1"=10'
 SHEET NO. 13 OF 13 SHEETS
 STA. 35+00.00 TO STA. 35+00.00

F.A.I. RTE.	SECTION	COUNTY	TOTAL SHEETS	SHEET NO.
57/70	(25-3)R	EFFINGHAM	1416	754
FED. ROAD DIST. NO.		ILLINOIS FED. AID PROJECT		

CONTRACT NO. 74296