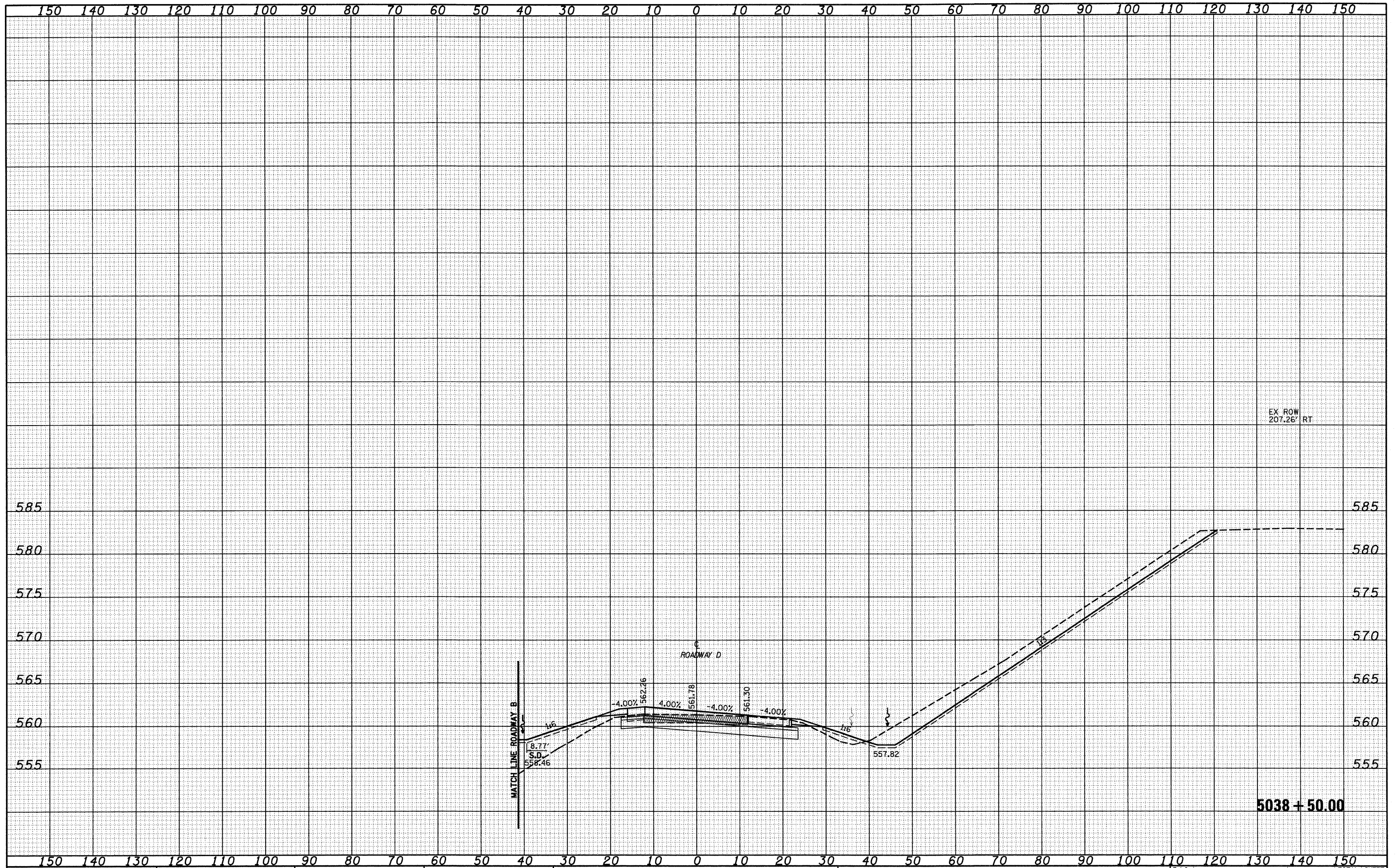


DATE	
BY	
SURVEYED	
TEMPLATE	
AREAS CHECKED	
FINAL SURVEY	
NOTE BOOK	
NO.	

DATE	
BY	
SURVEYED	
TEMPLATE	
AREAS CHECKED	
ORIGINAL SURVEY	
NOTE BOOK	
NO.	



EX ROW
207.26' RT

5038 + 50.00

FILE NAME =
S:\Project\402\402757\78.dwg

USER NAME = lmda
DESIGNED - JWS
DRAWN - LEC
CHECKED - BRM
DATE - 2-25-08

REVISED -
REVISED -
REVISED -
REVISED -

STATE OF ILLINOIS
DEPARTMENT OF TRANSPORTATION

CROSS SECTIONS SOUTH TRI LEVEL - ROADWAY D
SCALE: 1"=10'
SHEET NO. 15 OF 17 SHEETS
STA. 5038+50.00 TO STA. 5038+50.00

F.A.I. RTE.	SECTION	COUNTY	TOTAL SHEETS	SHEET NO.
57/70	(25-3)R	EFFINGHAM	1416	769
FED. ROAD DIST. NO.			ILLINOIS FED. AID PROJECT	
CONTRACT NO. 74296				