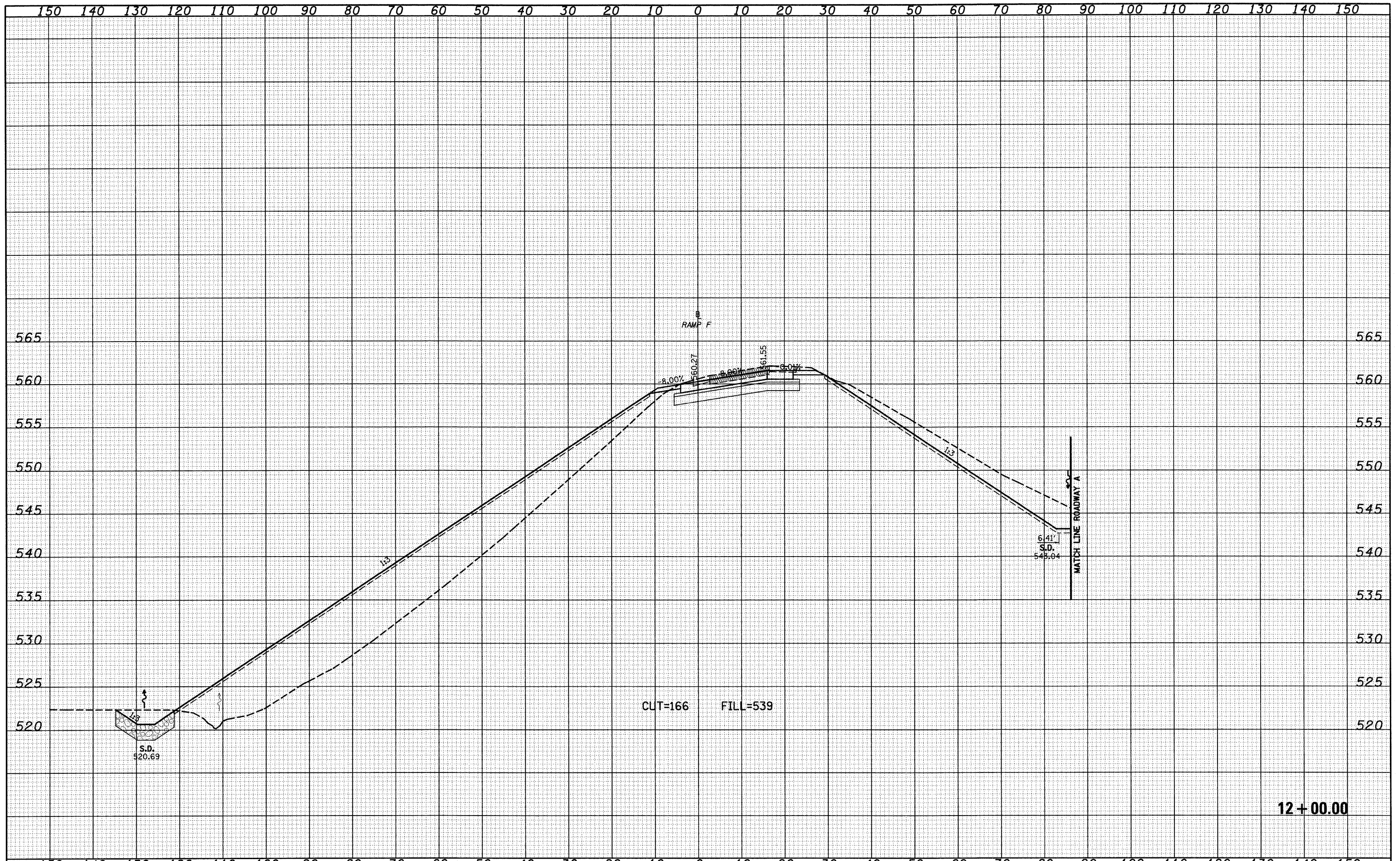


FINAL SURVEY	DATE
SURVEYED	BY
NOTE BOOK	
TEMPLATE	
AREAS CHECKED	
NO.	

ORIGINAL SURVEY	DATE
SURVEYED	BY
NOTE BOOK	
TEMPLATE	
AREAS CHECKED	
NO.	



FILE NAME =	USER NAME = Linda	DESIGNED - JWS	REVISED -	<b>STATE OF ILLINOIS</b> <b>DEPARTMENT OF TRANSPORTATION</b>	<b>CROSS SECTIONS SOUTH TRI LEVEL - RAMP F</b>			F.A.I. RTE.	SECTION	COUNTY	TOTAL SHEETS	SHEET NO.
5:\Project\103-2007-57-70.dgn\15 TriLevel.rvt		DRAWN - LEC	REVISED -					57/70	(25-3)R	EFFINGHAM	1416	777
PLOT SCALE = 20.0000' / IN.		CHECKED - BRM	REVISED -					CONTRACT NO. 74296				
PLOT DATE = 2/9/2010		DATE - 2-25-08	REVISED -					ILLINOIS FED. AID PROJECT				
				SCALE: 1"=10'			SHEET NO. 6 OF 12 SHEETS		STA. 12+00.00 TO STA. 12+00.00			

12 + 00.00