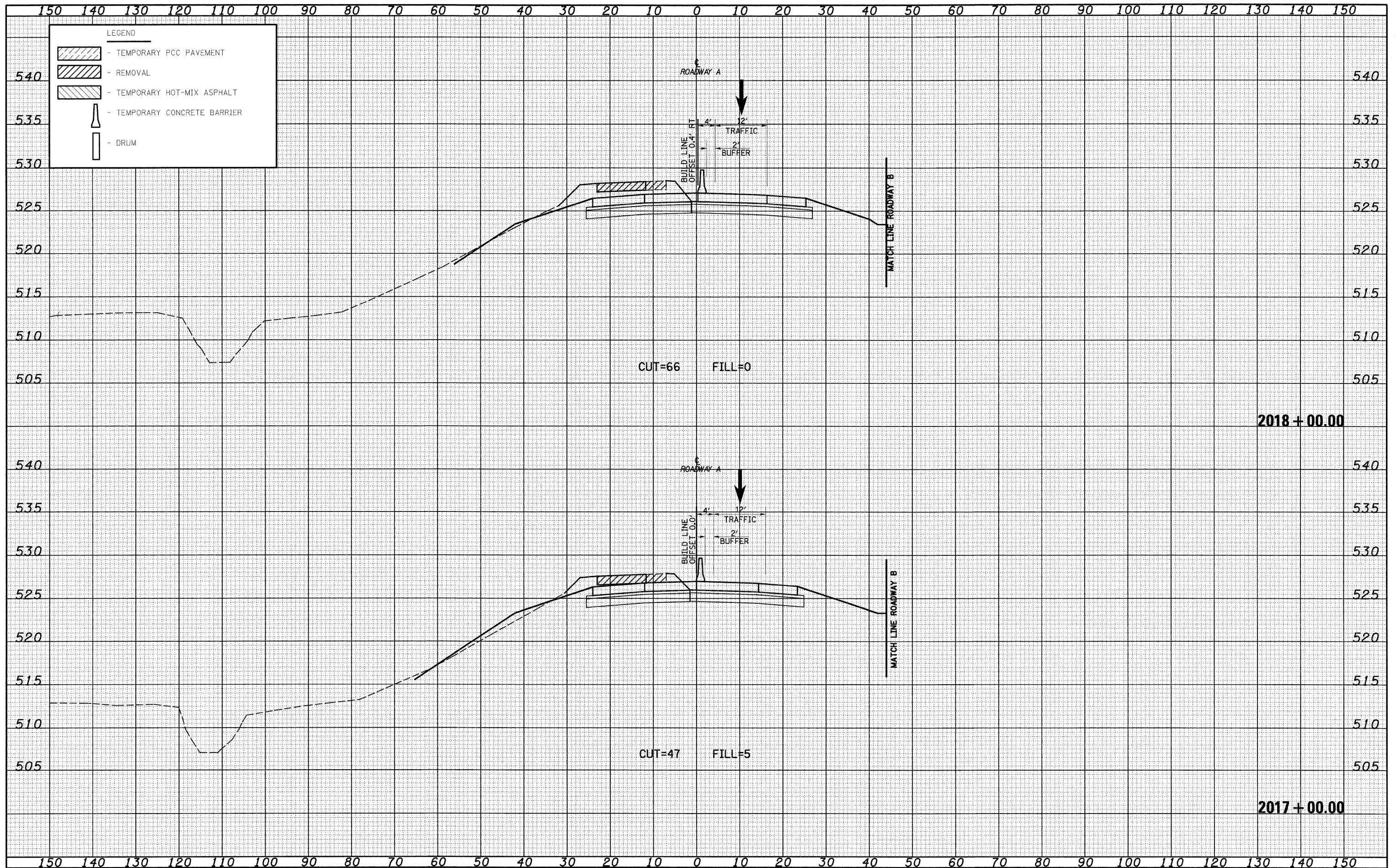


DATE	
BY	
FINAL SURVEY	
NOTE BOOK	
AREAS CHECKED	

DATE	
BY	
ORIGINAL SURVEY	
NOTE BOOK	
AREAS CHECKED	



FILE NAME =	USER NAME = lnda	DESIGNED - JWS	REVISED -	STATE OF ILLINOIS DEPARTMENT OF TRANSPORTATION	MAINTENANCE OF TRAFFIC SOUTH TRI LEVEL - ROADWAY A (STAGE 2)	F.A.T. RTE. = 57/70	SECTION = (25-3)R	COUNTY = EFFINGHAM	TOTAL SHEETS = 1416	SHEET NO. = 1184		
PLOT SCALE = 20.00/88' / IN.	CHECKED - BRM	REVISED -	SCALE: 1"=10'			SHEET NO. 2 OF 73 SHEETS	STA. 2017+00.00 TO STA. 2018+00.00	FED. ROAD DIST. NO.	ILLINOIS FED. AID PROJECT	CONTRACT NO. 74296		
PLOT DATE = 2/10/2010	DATE - 2-25-08	REVISED -										