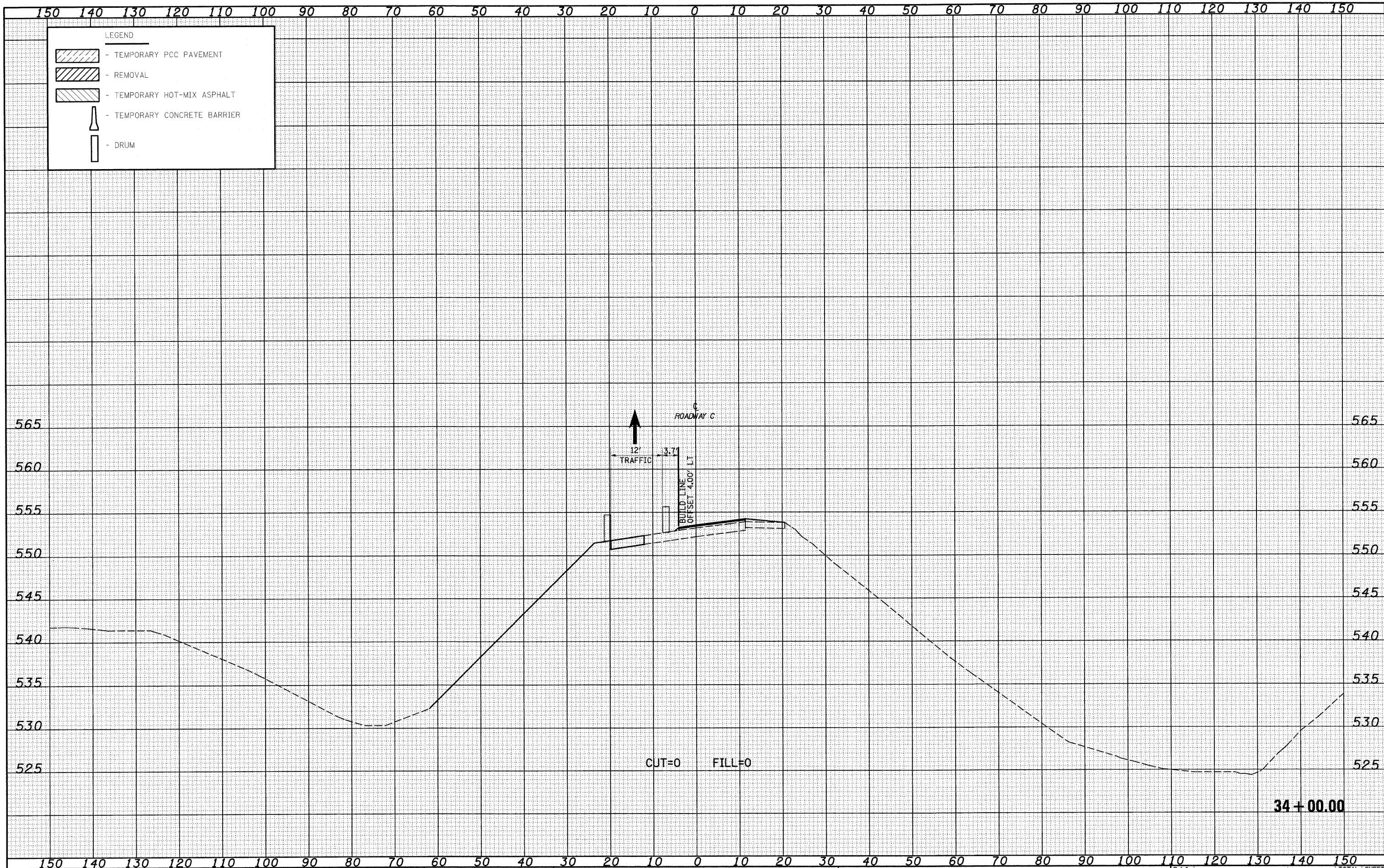


DATE	
BY	
FINAL SURVEY	
SURVEYED	
NOTE BOOK	
TEMPLATE	
AREAS	
AREAS CHECKED	
NO.	

DATE	
BY	
ORIGINAL SURVEY	
SURVEYED	
NOTE BOOK	
TEMPLATE	
AREAS	
AREAS CHECKED	
NO.	



LEGEND	
	- TEMPORARY PCC PAVEMENT
	- REMOVAL
	- TEMPORARY HOT-MIX ASPHALT
	- TEMPORARY CONCRETE BARRIER
	- DRUM

FILE NAME =  
 5:\projects\103-0007-51-70\p1\5 1rd\work\DR00001-5.dwg

USER NAME = linds  
 PLOT SCALE = 20.0000' / IN.  
 PLOT DATE = 2/10/2010

DESIGNED - JWS  
 DRAWN - LEC  
 CHECKED - BRM  
 DATE - 2-25-08

REVISED -  
 REVISED -  
 REVISED -  
 REVISED -

**STATE OF ILLINOIS  
 DEPARTMENT OF TRANSPORTATION**

**MAINTENANCE OF TRAFFIC SOUTH TRI LEVEL - ROADWAY C (STAGE 1)**

SCALE: 1"=10'    SHEET NO. 7 OF 8 SHEETS    STA. 34+00.00 TO STA. 34+00.00

F.A.J. RTE.	SECTION	COUNTY	TOTAL SHEETS	SHEET NO.
57/70	(25-3)R	EFFINGHAM	1416	1270
FED. ROAD DIST. NO.			ILLINOIS FED. AID PROJECT	
			CONTRACT NO. 74296	