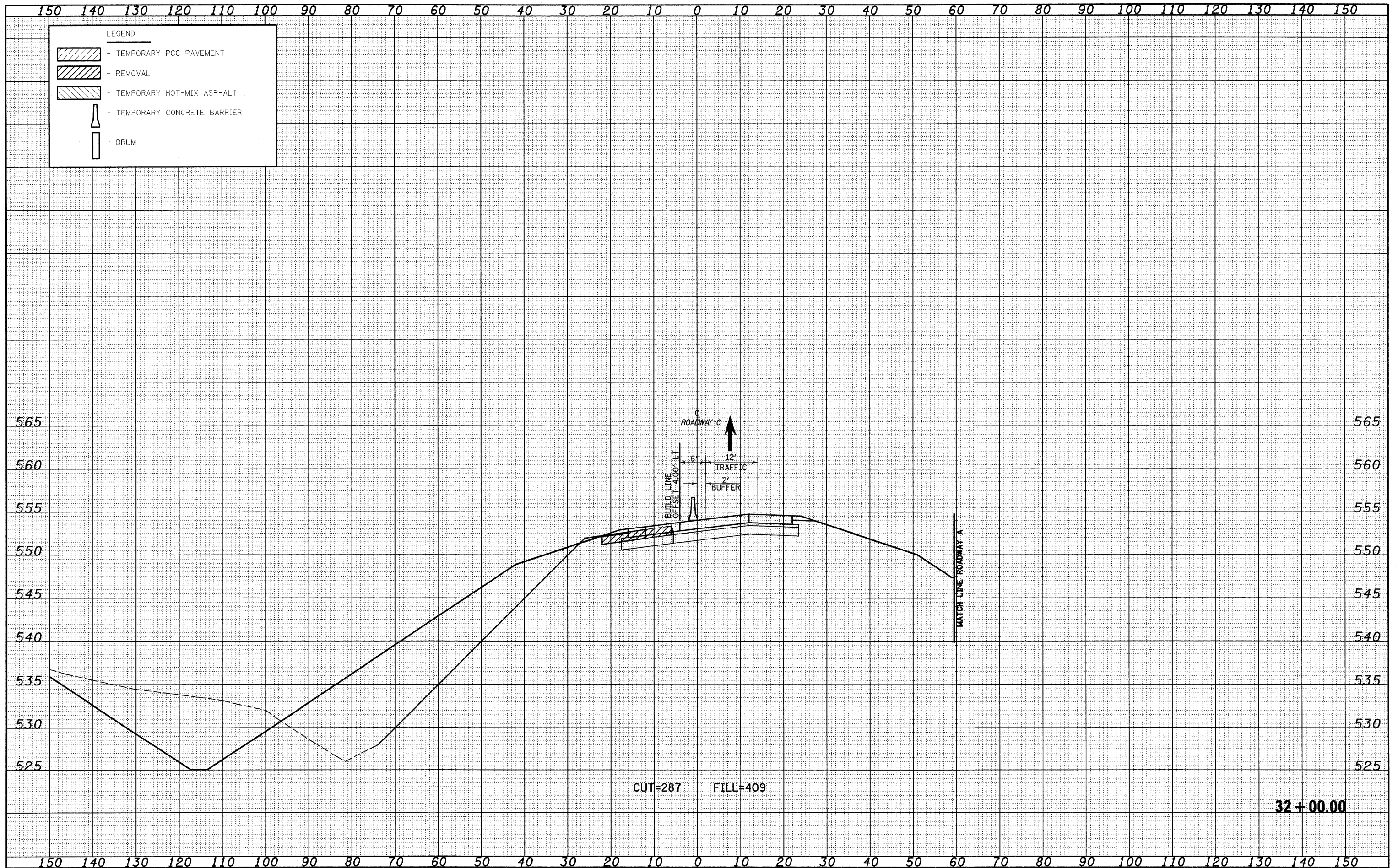


DATE	
BY	
FINAL SURVEY	
NOTE BOOK	
NO.	

DATE	
BY	
ORIGINAL SURVEY	
NOTE BOOK	
NO.	



FILE NAME =
 S:\projects\43-00072.57-78.dgn\17890001.dwg

USER NAME = 1nda
 DESIGNED - JWS
 DRAWN - LEC
 CHECKED - BRM
 DATE - 2-25-08

REVISED -
 REVISED -
 REVISED -
 REVISED -

**STATE OF ILLINOIS
 DEPARTMENT OF TRANSPORTATION**

MAINTENANCE OF TRAFFIC SOUTH TRI LEVEL - ROADWAY C (STAGE 2)

SCALE: 1"=10' SHEET NO. 4 OF 8 SHEETS STA. 32+00.00 TO STA. 32+00.00

F.A.I. RTE. 57/70	SECTION (25-3)R	COUNTY EFFINGHAM	TOTAL SHEETS 1416	SHEET NO. 1275
FED. ROAD DIST. NO. ILLINOIS FED. AID PROJECT			CONTRACT NO. 74296	