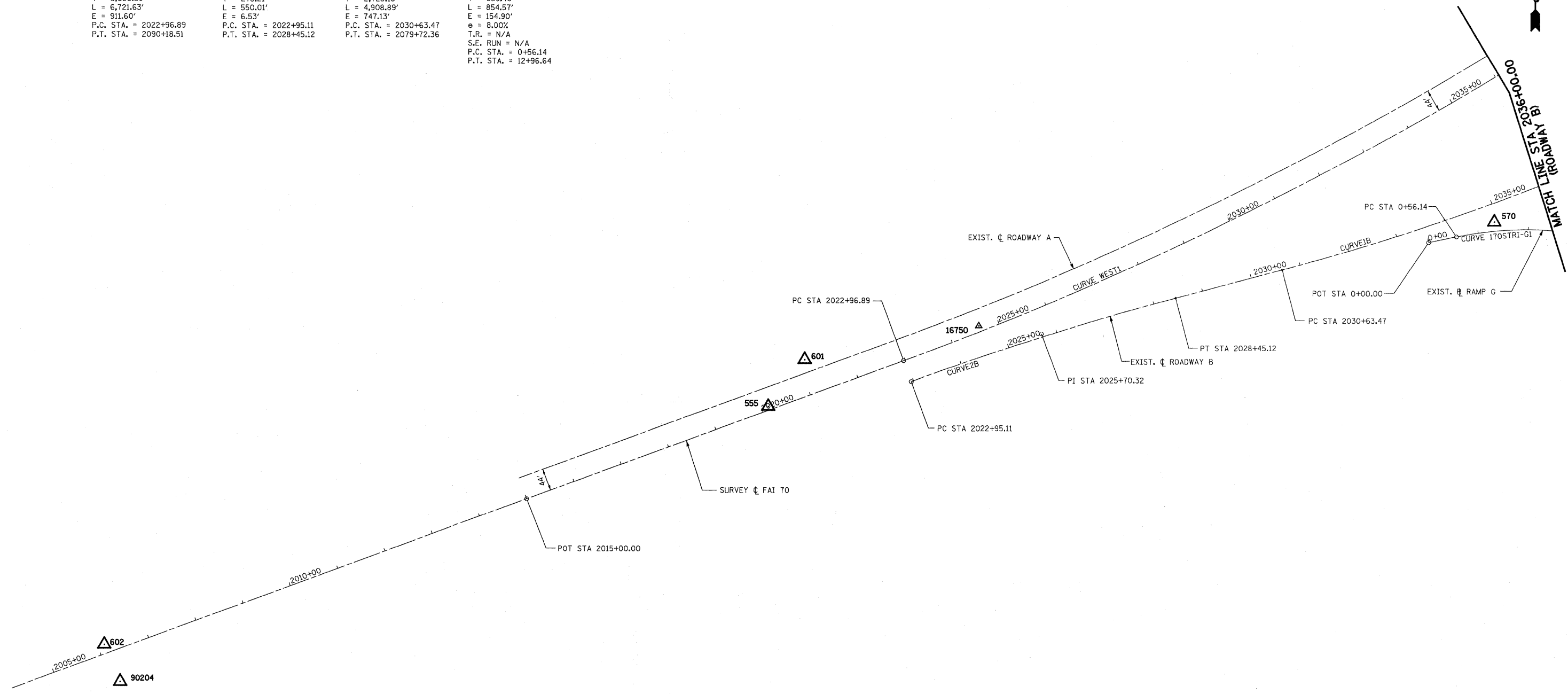


EXIST. SURVEY ϕ FAI 70
 EXIST. CURVE WEST1
 PI STA. = 2059+53.47
 $\Delta = 55^\circ 59' 40''$ (LT)
 $D = 0^\circ 49' 59''$
 $R = 6,877.84'$
 $T = 3,656.59'$
 $L = 6,721.63'$
 $E = 911.60'$
 P.C. STA. = 2022+96.89
 P.T. STA. = 2090+18.51

EXIST. ROADWAY B
 EXIST. CURVE CURVE2B
 PI STA. = 2025+70.32
 $\Delta = 5^\circ 26' 19''$ (RT)
 $D = 0^\circ 59' 20''$
 $R = 5,794.33'$
 $T = 275.21'$
 $L = 550.01'$
 $E = 6.53'$
 P.C. STA. = 2022+95.11
 P.T. STA. = 2028+45.12

EXIST. ROADWAY B
 EXIST. CURVE CURVE1B
 PI STA. = 2057+83.65
 $\Delta = 61^\circ 25' 59''$ (LT)
 $D = 1^\circ 15' 05''$
 $R = 4,578.30'$
 $T = 2,720.18'$
 $L = 4,908.89'$
 $E = 747.13'$
 P.C. STA. = 2030+63.47
 P.T. STA. = 2079+72.36

EXIST. RAMP G
 EXIST. CURVE 170STRI-G1
 PI STA. = 9+15.54
 $\Delta = 101^\circ 50' 25''$ (RT)
 $D = 8^\circ 12' 35''$
 $R = 697.91'$
 $T = 859.40'$
 $L = 854.57'$
 $E = 154.90'$
 $e = 8.00\%$
 T.R. = N/A
 S.E. RUN = N/A
 P.C. STA. = 0+56.14
 P.T. STA. = 12+96.64



BENCHMARK #551:
 CHISELED SQUARE ON TOP OF SLOPE
 WALL ON EAST SIDE OF LITTLE WABASH RIVER
 STA 2005+75, 25.7' OFF OF CENTERLINE I-70 WEST
 ELEV 521.58

BENCHMARK #2020:
 CHISELED SQUARE NORTHEAST CORNER OF
 CONCRETE DROP INLET JUST WEST OF SOUTH
 TRI-LEVEL IN MEDIAN
 STA. 2020+00
 ELEV 521.68

BENCHMARK #1:
 CHISELED SQUARE CENTER OF WEST CONCRETE
 FOUNDATION TO OVERHEAD SIGN TRUSS I-70 EB
 STA. 2032+50 LT
 ELEV 523.52

SURVEY ϕ FAI 70

DESCRIPTION	COORDINATE	
	NORTHING	EASTING
POT STA 1966+63.14	881449.64	906570.31
PC STA 2022+96.89	883392.73	911858.36
PI STA 2059+53.47	884653.89	915290.58
PT STA 2090+18.51	888204.48	916164.64

EXISTING ROADWAY B

DESCRIPTION	COORDINATE	
	NORTHING	EASTING
PC STA 2022+95.11	883351.43	911873.54
PI STA 2025+70.32	883446.35	912131.86
PT STA 2028+45.12	883516.36	912398.02
PC STA 2030+63.47	883571.91	912609.18
PI STA 2057+83.65	884263.88	915239.88
PT STA 2079+72.36	886905.21	915890.10
POT STA 2092+99.59	888193.96	916207.36

EXISTING SOUTH TRI LEVEL RAMP G

DESCRIPTION	COORDINATE	
	NORTHING	EASTING
POT STA 0+00.00	883626.36	912899.87
PC STA 0+56.14	883637.67	912954.86
PI STA 9+15.54	883810.87	913796.62
PT STA 12+96.64	882951.48	913793.41

CONTROL POINTS

CONTROL POINT	COORDINATE	
	NORTHING	EASTING
90204	882755.24	910303.19
602	882829.02	910271.77
555	883301.86	911589.92
16750	883461.94	912007.47
601	883394.86	911662.17
570	883666.87	913029.90

