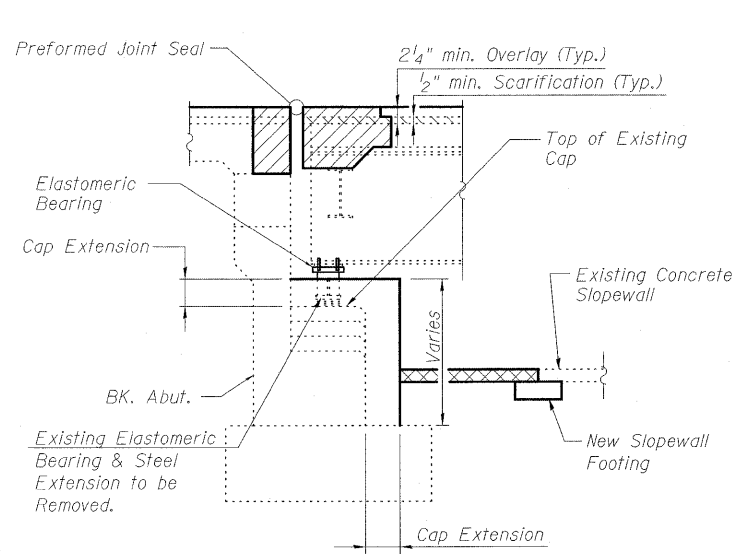
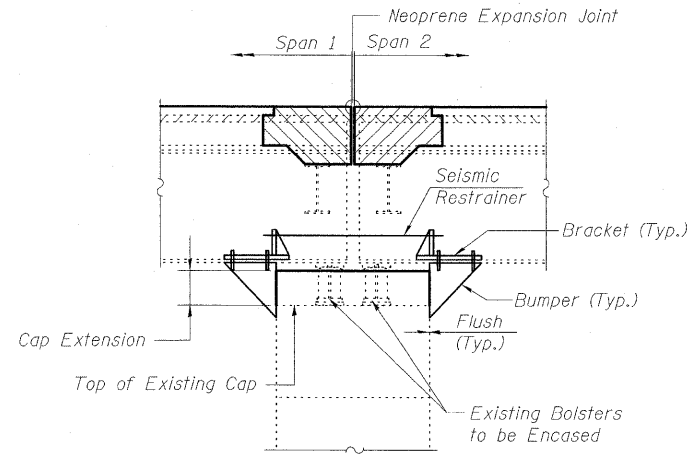


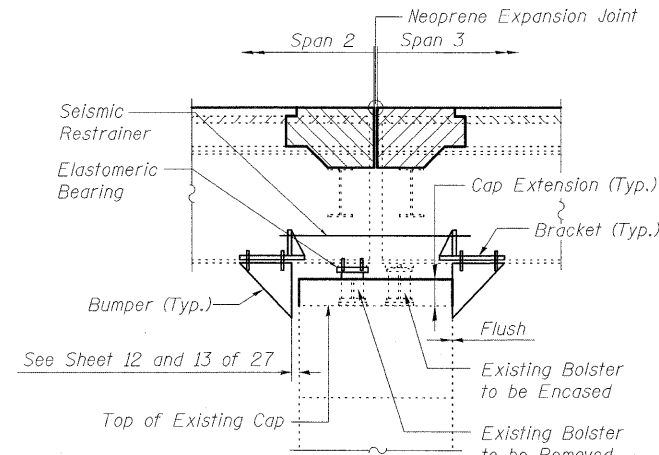
STATE OF ILLINOIS
DEPARTMENT OF TRANSPORTATION



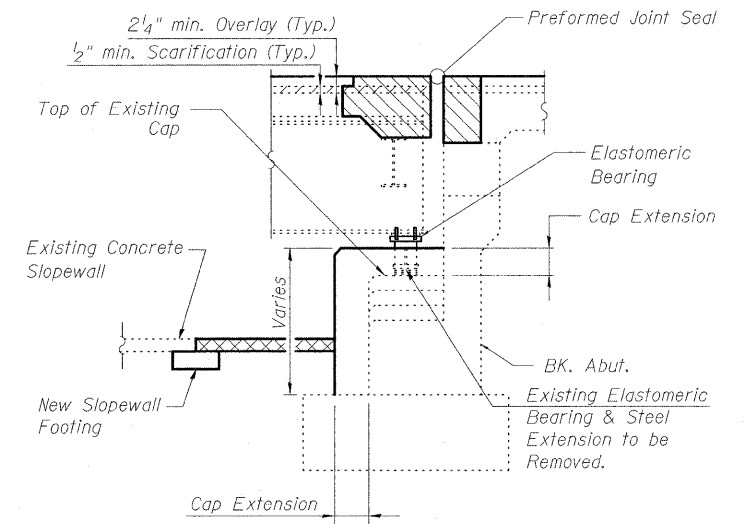
SECTION A-A



SECTION B-B

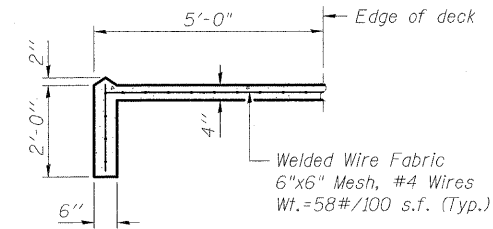


SECTION C-C

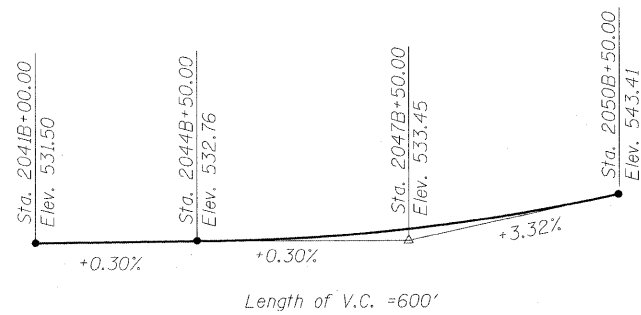


SECTION D-D

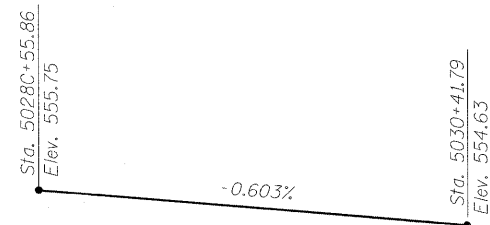
Indicates Removal and Replacement of Concrete Slopewall
Indicates Removal and Replacement of Concrete and Existing Neoprene Expansion Joints



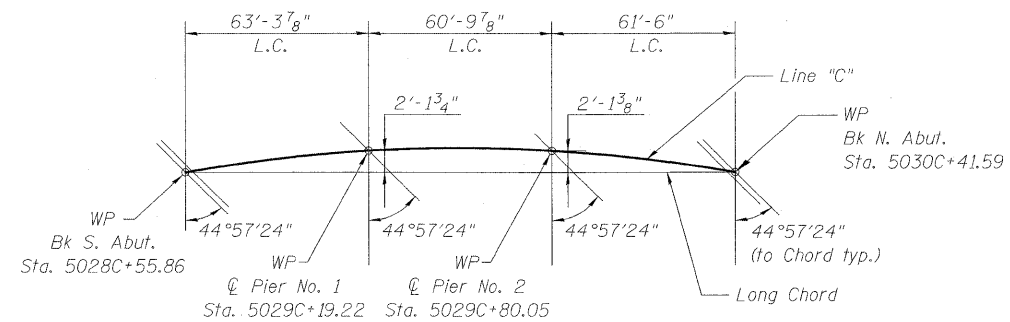
SECTION E-E



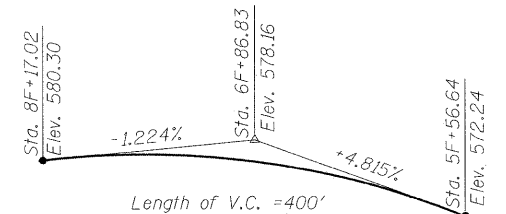
PROPOSED PROFILE GRADE
(F.A.I. Route 70 Line "B")



PROPOSED PROFILE GRADE
(F.A.I. Route 57 Line "C")



OFFSET SKETCH



PROFILE GRADE
(F.A.I. Route 57 Line "F")

HORIZONTAL CURVE DATA

(Existing)
P.I. Sta. 2057B+83.65 Line "B"
 $\Delta = 61^\circ 25' 59''$ (LT)
 $D = 1^\circ 15' 05''$
 $R = 4578.30'$
 $T = 2720.18'$
 $L = 4908.89'$
 $E = 747.13'$

HORIZONTAL CURVE DATA

(Existing)
P.I. Sta. 5032C+76.40 Line "C"
 $\Delta = 42^\circ 31' 30''$ (RT)
 $D = 3^\circ 10' 09''$
 $R = 1807.88'$
 $T = 703.50'$
 $L = 1341.81'$
 $E = 132.05'$

HORIZONTAL CURVE DATA

(Existing)
P.I. Sta. 12F+67.74 Line "F"
 $\Delta = 115^\circ 16' 56''$ (RT)
 $D = 8^\circ 12' 35''$
 $R = 697.91'$
 $T = 1101.47'$
 $L = 1404.23'$
 $E = 606.05'$

Note:
For Roadway Intersection Plan see Roadway Plans.

DESIGNED	B.B.
CHECKED	C.J.F.
DRAWN	W.J.S.
CHECKED	C.J.F. & B.B.

GENERAL INFORMATION
STRUCTURE NO. 025-001

SHEET NO. 3 27 SHEETS	F.A.I. RTE.	SECTION	COUNTY	TOTAL SHEETS	SHEET NO.
	57	(25-3HB)I-2	EFFINGHAM	1416	1357
		SN 025-0001	CONTRACT NO. 74296		
FED. ROAD DIST. NO. 7 ILLINOIS FED. AID PROJECT					



**BERNARDIN
LOCHMUELLER &
ASSOCIATES, INC.**

3 Oak Drive
Maryville, IL 62062-5635
Local (618) 288-4665
Fax 618-288-4696