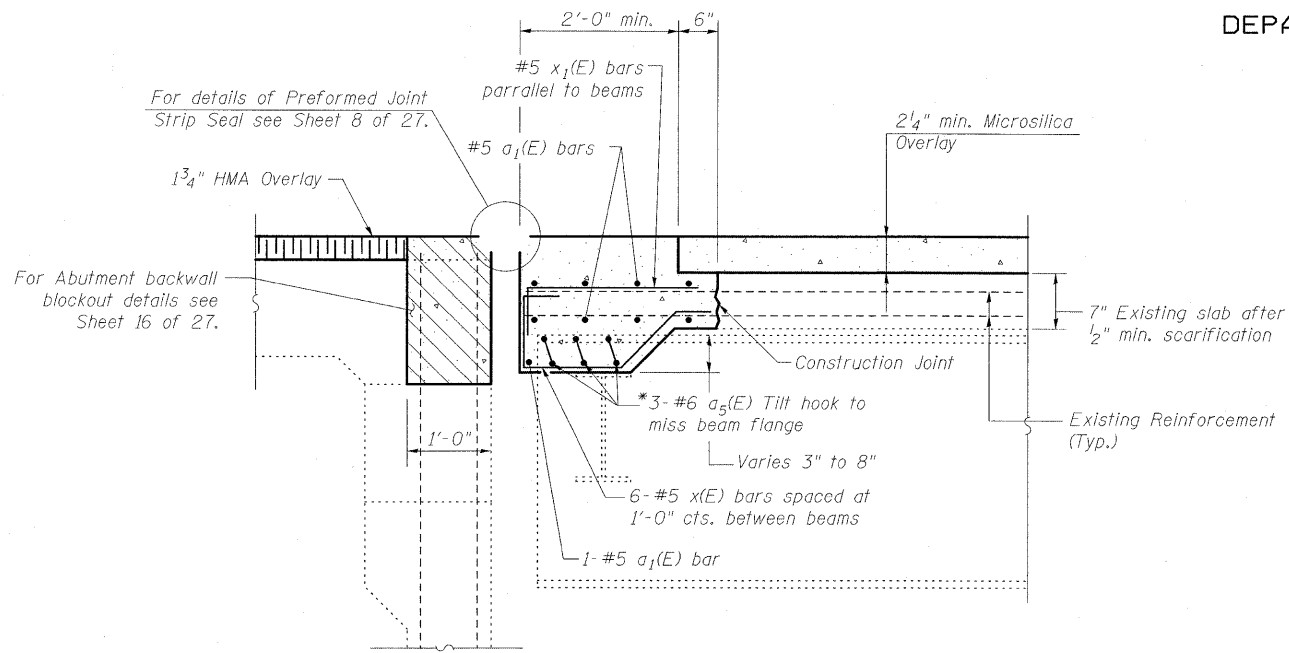
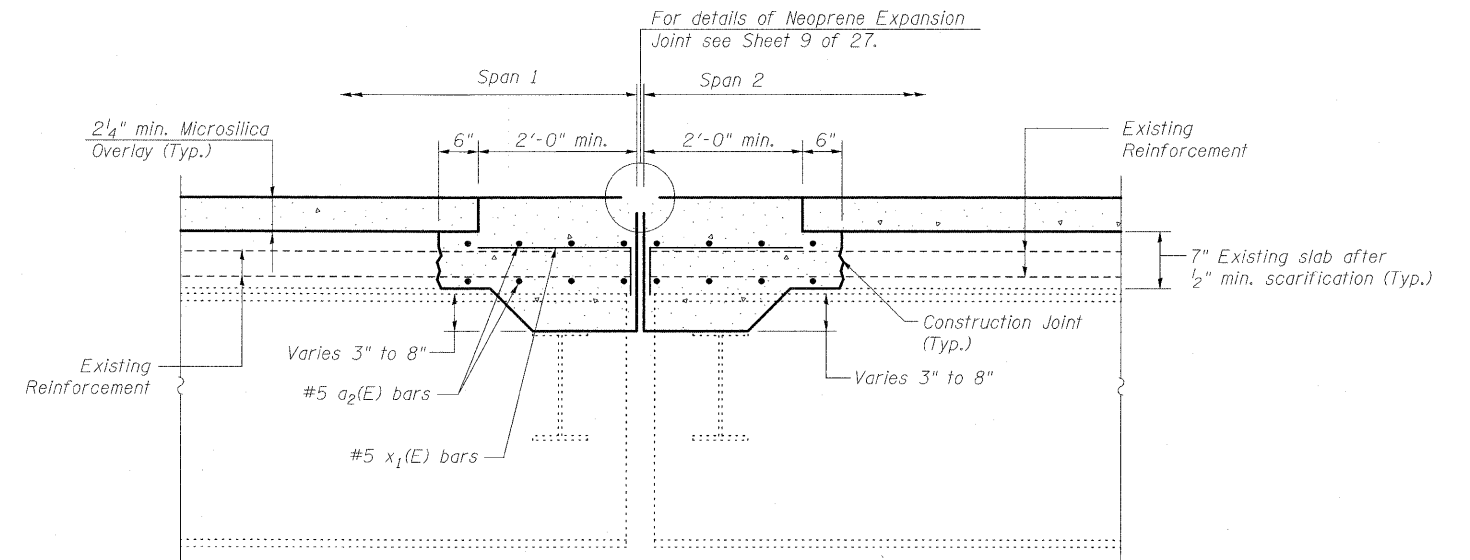


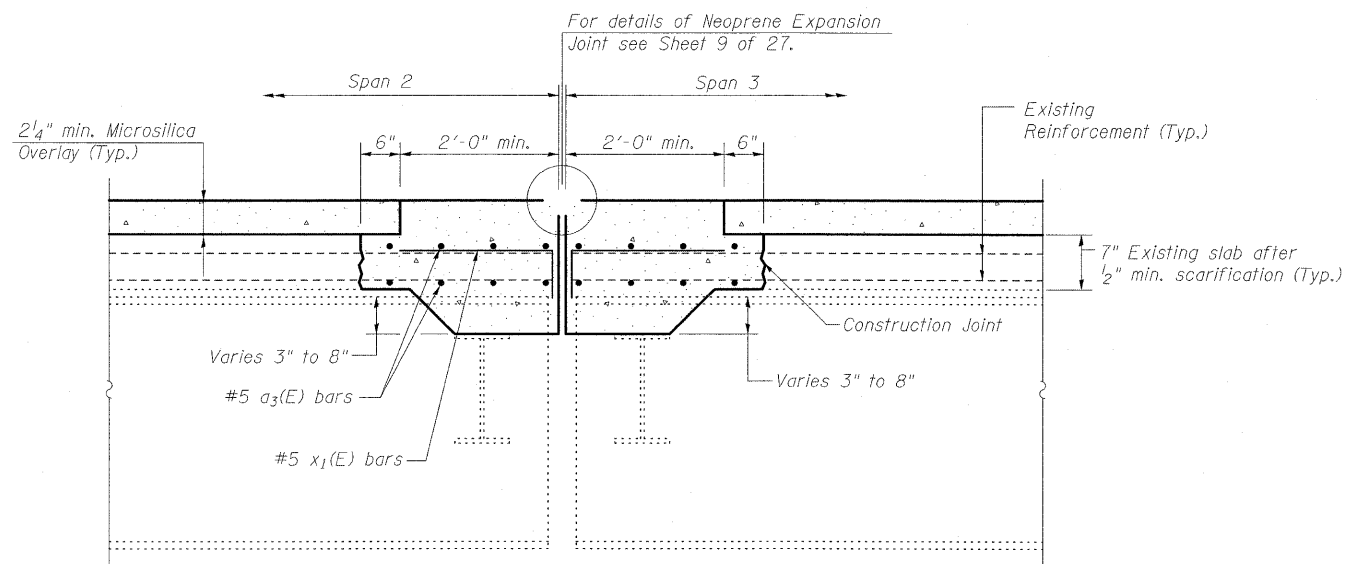
STATE OF ILLINOIS
DEPARTMENT OF TRANSPORTATION



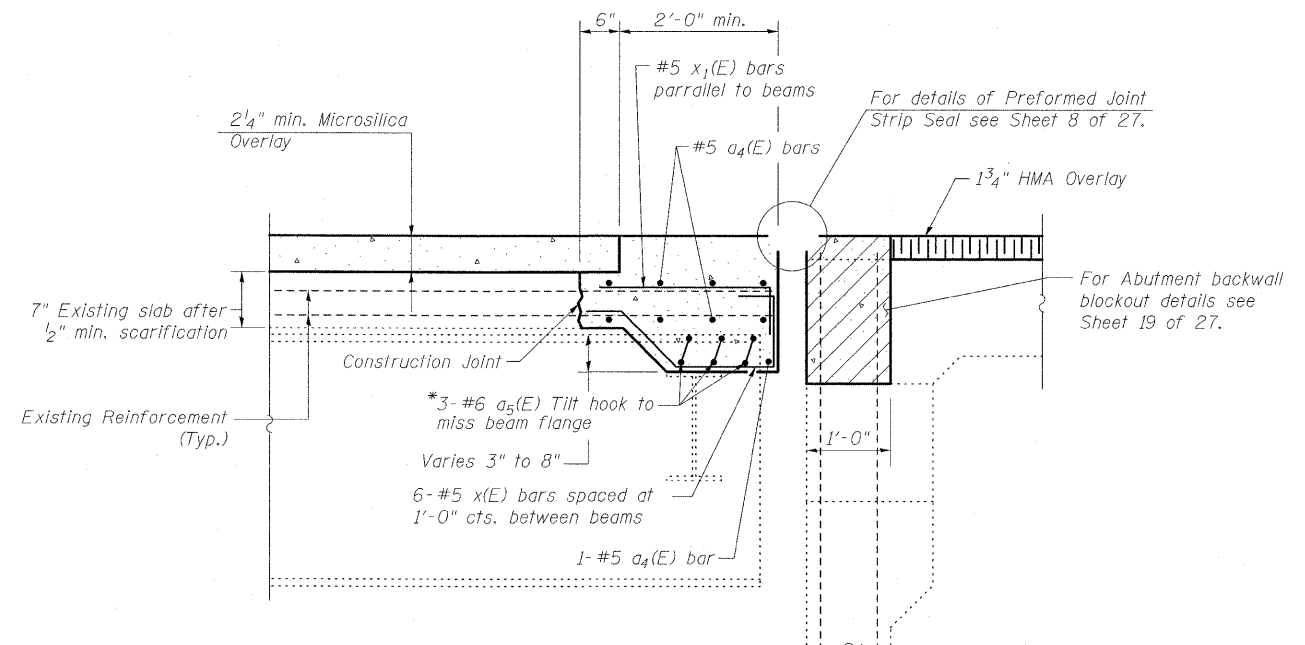
SECTION A-A
(South Abutment)



SECTION B-B
(Pier 1)



SECTION C-C
(Pier 2)



SECTION D-D
(North Abutment)

* Use 3-#6 Bar Splicers for Edge Beams at Stage Construction Joints. See Sheet 10 of 27.

Notes:
Dimensions shown are at right angles to deck joints.
Place x(E) and x1(E) bars parallel to beams.

DESIGNED	B.B.
CHECKED	C.J.F.
DRAWN	W.J.S.
CHECKED	C.J.F. & B.B.

**SUPERSTRUCTURE
SLAB REPAIR DETAILS
STRUCTURE NO. 025-0001**



**BERNARDIN
LOCHMUELLER &
ASSOCIATES, INC.**

8 Oak Drive
Maryville, IL 62442-5635
Local (618) 288-4665
Fax 618-288-4666

SHEET NO. 6 27 SHEETS	F.A.I. RTE. 57	SECTION (25-3HB)I-2	COUNTY EFFINGHAM	TOTAL SHEETS 1416	SHEET NO. 1360
	SN 025-0001		CONTRACT NO. 74296		
FED. ROAD DIST. NO. 7 ILLINOIS FED. AID PROJECT					