

STATE OF ILLINOIS
DEPARTMENT OF TRANSPORTATION

Joint Size	"C" at 50°F	"D" at 50°F
2"	1/2"	1 1/2" Min.

For Piers 1 & 2, the detailed expansion width of 1/2" at 50°F is not standard. The existing field conditions may allow for an increase in expansion width. This increase in width shall be approved by the Engineer.

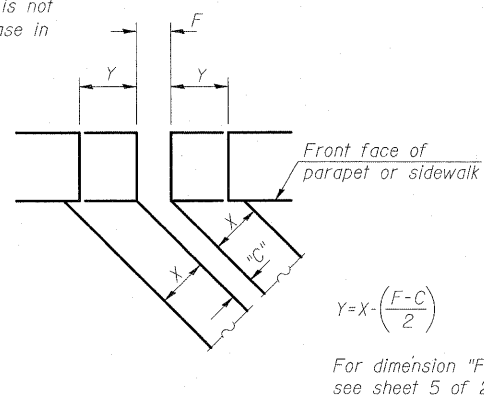
INSTALLATION NOTES

- Install continuous seal in roadway, parapet, curb, and sidewalk.
- Install anchor blocks as indicated.

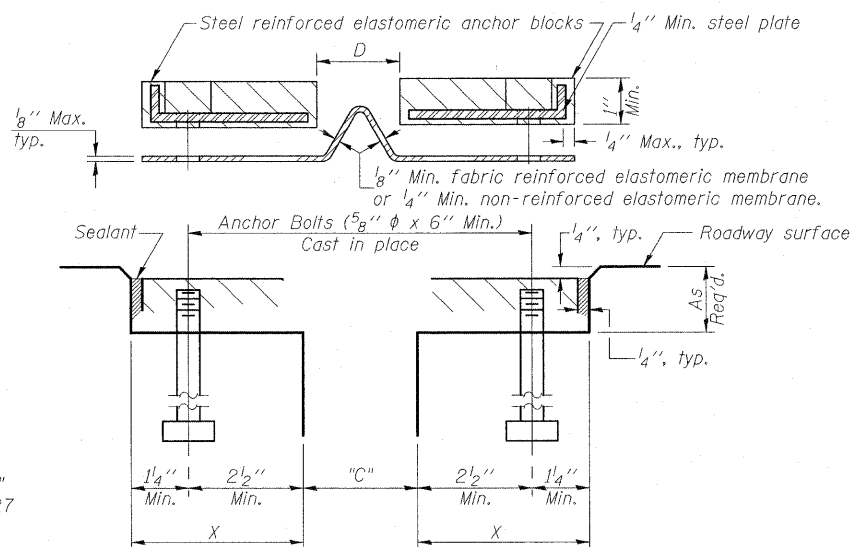
Note A:
Maximum spacing of anchor bolts shall be 12" centers.

SKEW LIMITATIONS

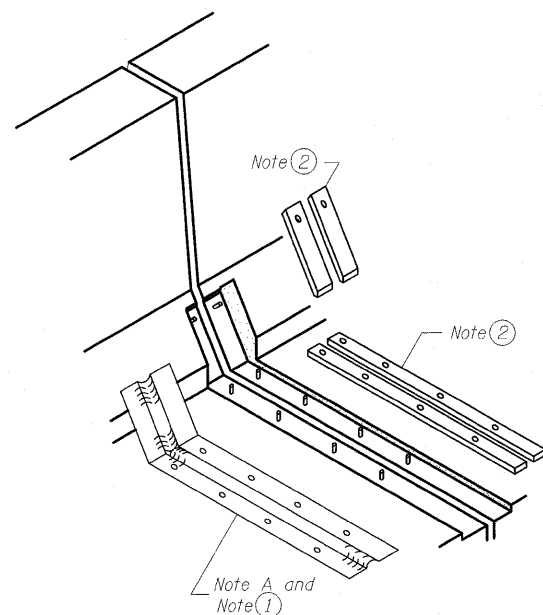
The details of the anchor blocks and the elastomeric membrane in the parapet, as shown, are for up to 50° skews. For skews greater than 50°, the anchor blocks and the elastomeric membrane, installed according to dimension "D", might require modifications to insure a minimum clearance of 1/2" from centerline of anchor studs to edge of parapet opening. The anchor blocks and the elastomeric membrane shall also be installed to the top of the parapet with the anchor studs spaced at ±12" cts.



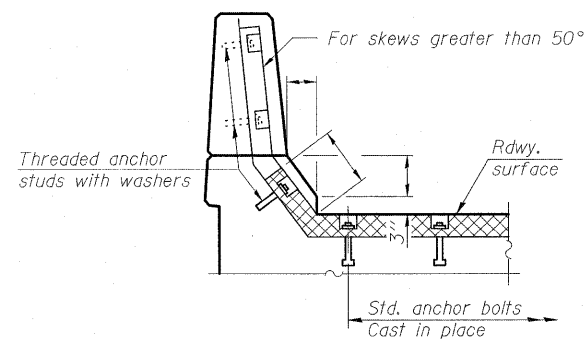
FORMING BLOCKOUT SKETCH



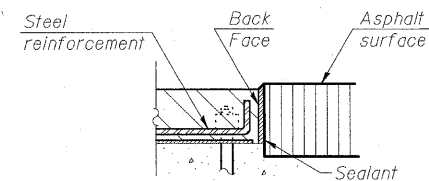
CROSS SECTION



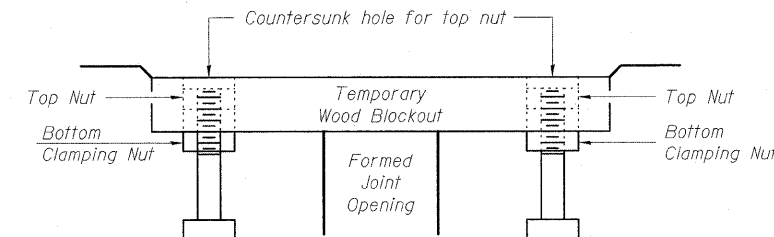
AT PARAPET



AT PARAPET



ANCHOR BLOCK WITH ASPHALT SURFACE



Note:
Stud needs to be threaded lower to allow for use of clamping nut.

RECOMMENDED BLOCKOUT DETAIL

BILL OF MATERIAL

Item	Unit	Total
Neoprene Expansion Joint 2"	Foot	111

**NEOPRENE EXPANSION JOINT
STRUCTURE NO.025-0001**

DESIGNED	
CHECKED	
DRAWN	W.J.S.
CHECKED	C.J.F. & B.B.



**BERNARDIN
LOCHMUELLER &
ASSOCIATES, INC.**

3 Oak Drive
Meryville, IL 62062-5635
Local (618) 288-4955
Fax 618-288-4666

SHEET NO. 9 27 SHEETS	F.A.I. RTE.	SECTION	COUNTY	TOTAL SHEETS	SHEET NO.
	57	(25-3HB)1-2	EFFINGHAM	1416	1363
		SN 025-0001	CONTRACT NO. 74296		
FED. ROAD DIST. NO. 7 ILLINOIS FED. AID PROJECT					