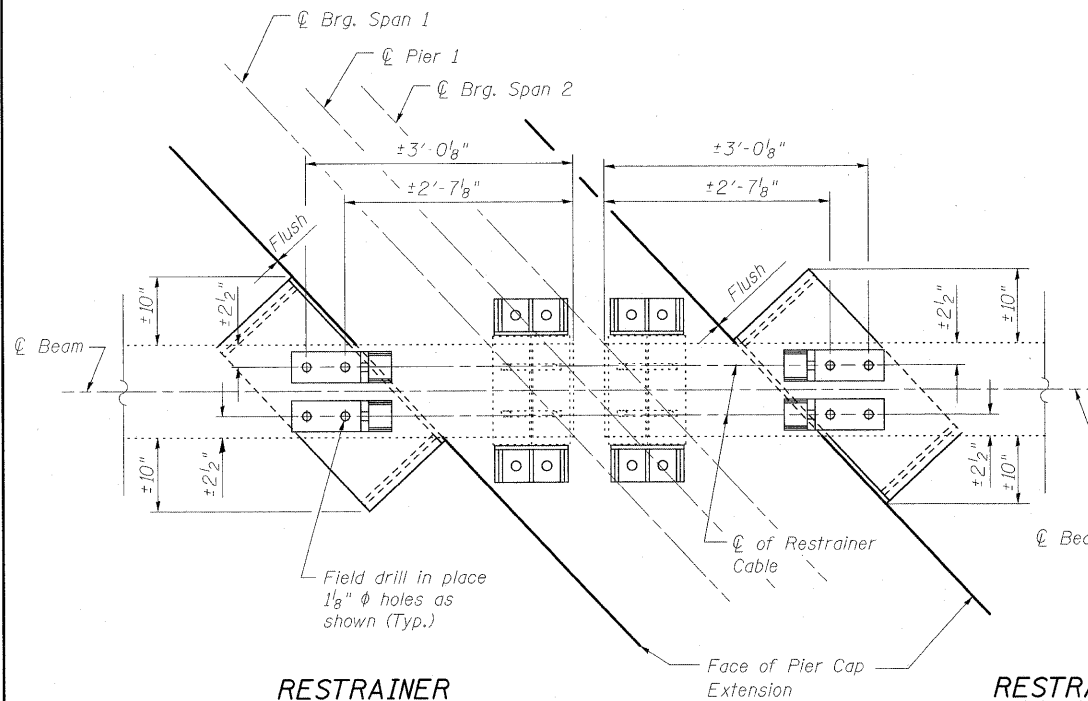


STATE OF ILLINOIS
DEPARTMENT OF TRANSPORTATION

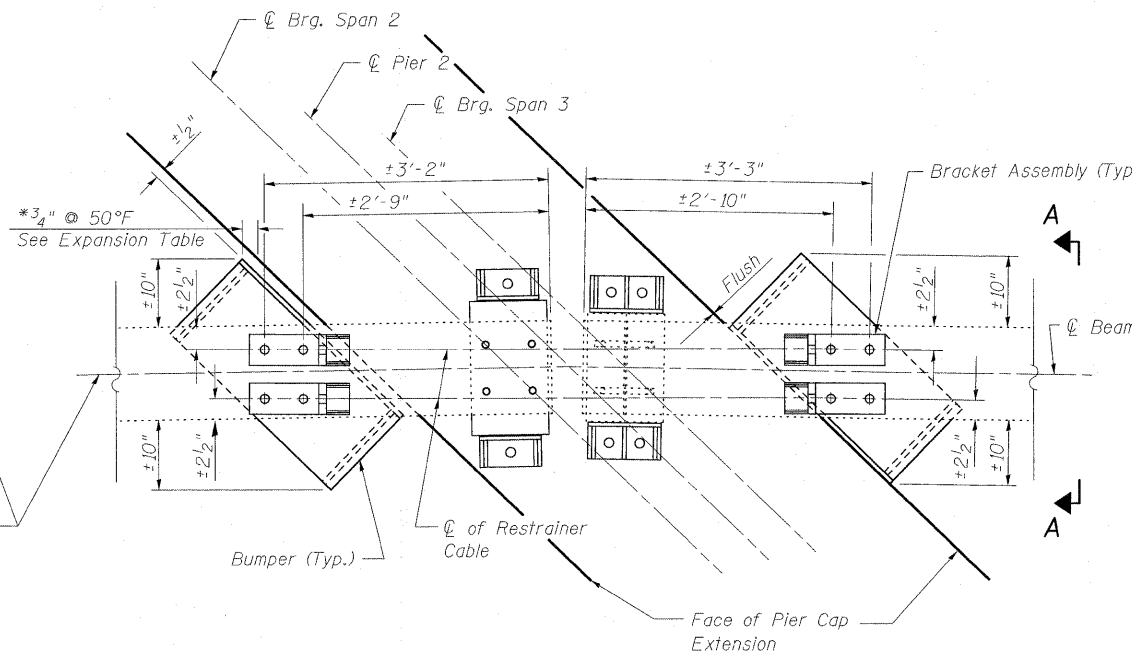


**RESTRAINER
INDICATOR END**

PIER 1 PLAN
(Beams 1 thru 6)
(6 Required)

**RESTRAINER
BOLTED END**

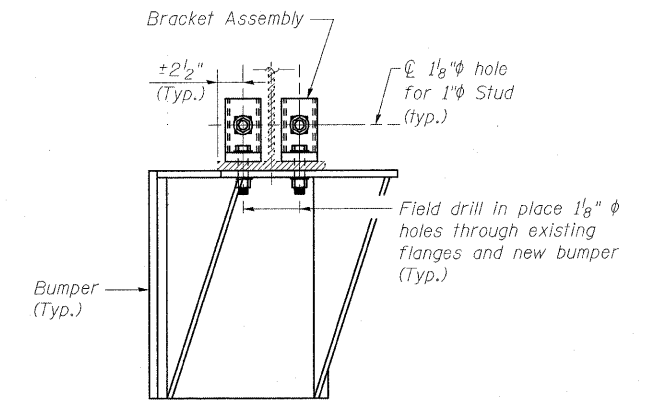
The backing off of the nut in step 5 of Cable Restrainer Unit Installation Procedure on sheet 11 of 27 should be omitted at Pier 1. The disc springs should be fully compressed during installation at Pier 1, Span 1.



**RESTRAINER
INDICATOR END**

PIER 2 PLAN
(Beams 2 thru 5)
(4 Required)

**RESTRAINER
BOLTED END**

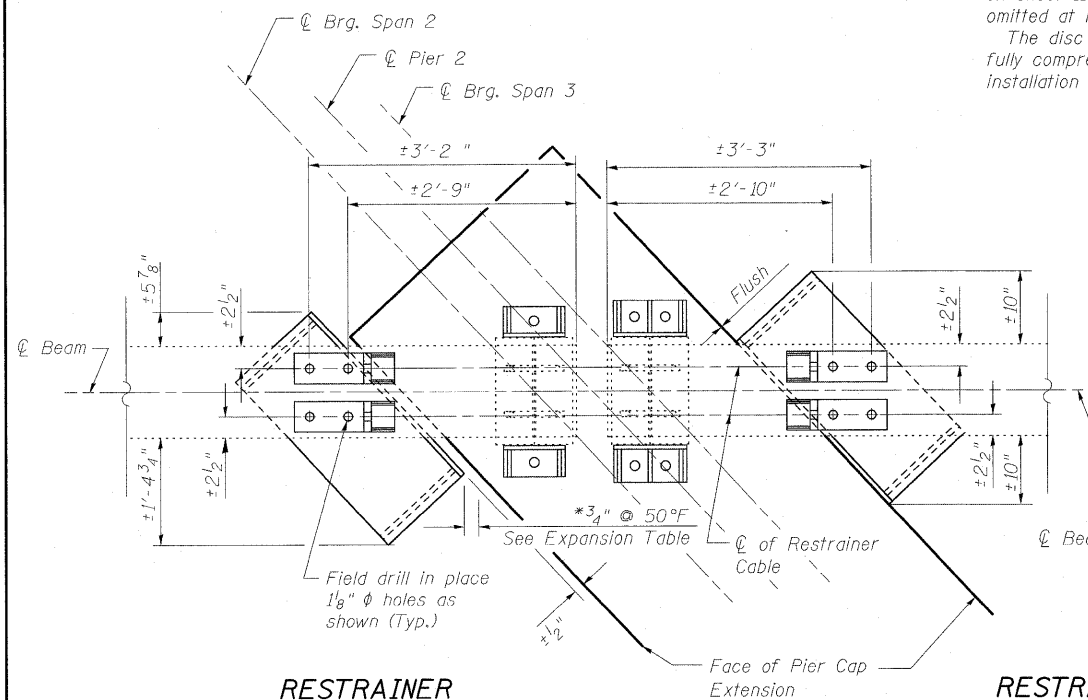


SECTION A-A
Bumper shown on skew

Ambient Temperature	Gap
T < 50°F	3/4" - Δ Temp
T = 50°F	3/4"
T > 50°F	3/4" + Δ Temp

*Δ Temp = 1/32" for every ±10°F (Typ.)

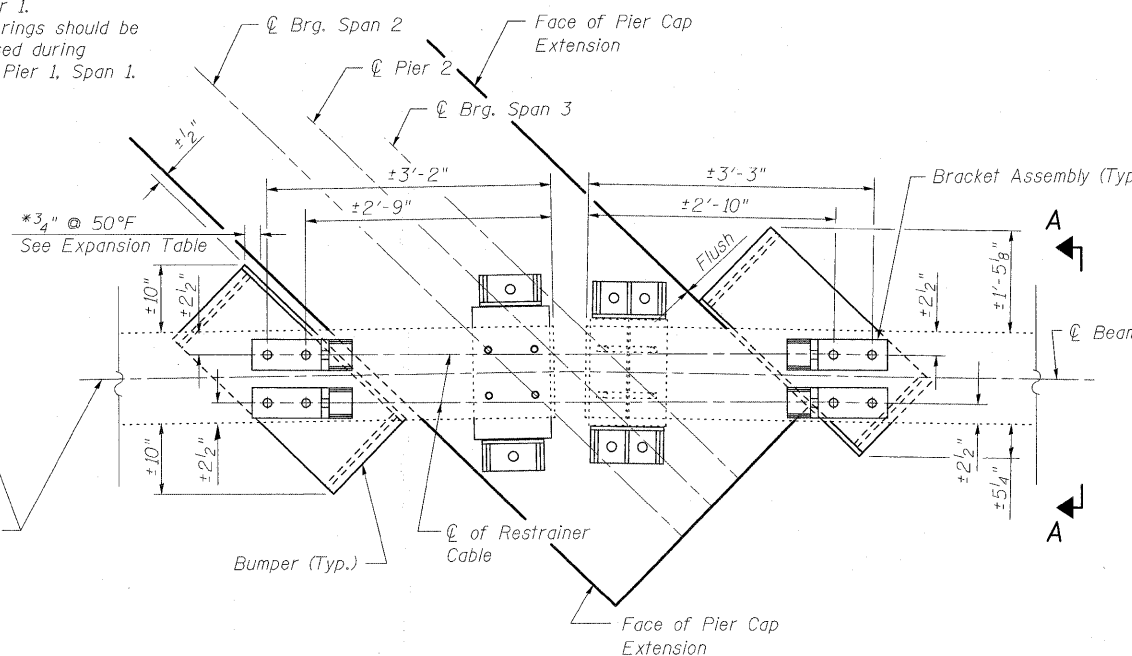
EXPANSION TABLE



**RESTRAINER
INDICATOR END**

PIER 2 PLAN
(Beam 1)
(1 Required)

**RESTRAINER
BOLTED END**



**RESTRAINER
INDICATOR END**

PIER 2 PLAN
(Beam 6)
(1 Required)

**RESTRAINER
BOLTED END**

Notes:
For General Elevation Views of Seismic Restrainers, see Sections A-A thru D-D on Sheet 3 of 27.
Two hardened washers are required for each set of oversized holes.
Bumpers shall be paid for as Furnishing and Erecting Structural Steel.

BILL OF MATERIAL

Item	Unit	Total
Seismic Restrainer	Each	12
Furnishing & Erecting Structural Steel	Pound	6926

**BUMPER DETAILS
STRUCTURE NO. 025-0001**

DESIGNED	B.B.
CHECKED	C.J.F.
DRAWN	W.J.S.
CHECKED	C.J.F. & B.B.



**BERNARDIN
LOCHMUELLER &
ASSOCIATES, INC.**

3 Oak Drive
Maryville, IL 62442-5635
Local (618) 288-4665
Fax 618-288-4666

SHEET NO. 13 27 SHEETS	F.A.I. RTE. 57	SECTION (25-3HB)-2	COUNTY EFFINGHAM	TOTAL SHEETS 1416	SHEET NO. 1367
	SN 025-0001		CONTRACT NO. 74296		
FED. ROAD DIST. NO. 7 ILLINOIS FED. AID PROJECT					