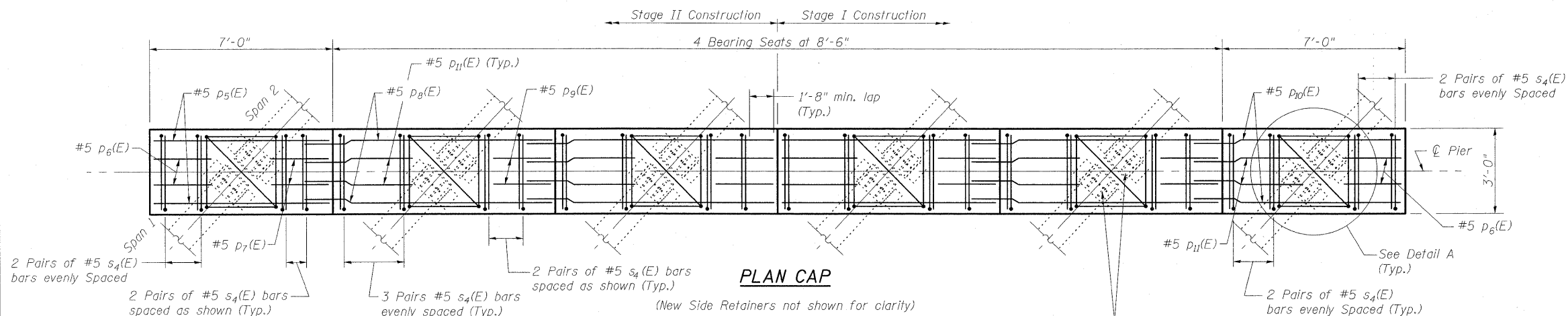
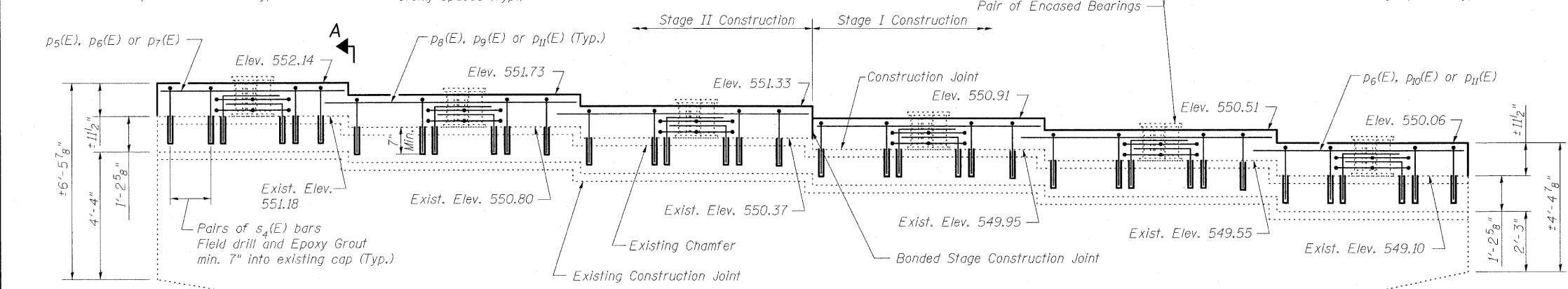


STATE OF ILLINOIS
DEPARTMENT OF TRANSPORTATION

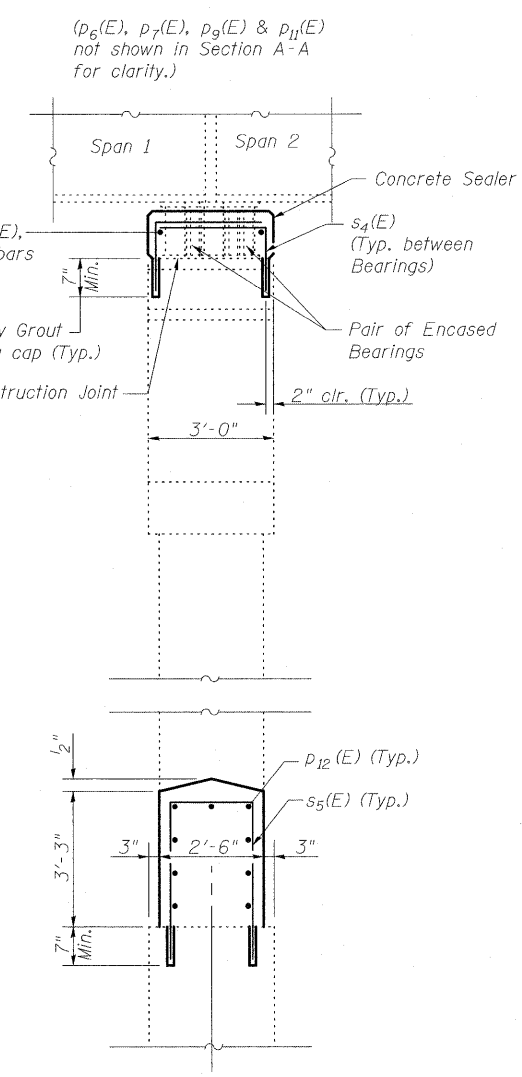
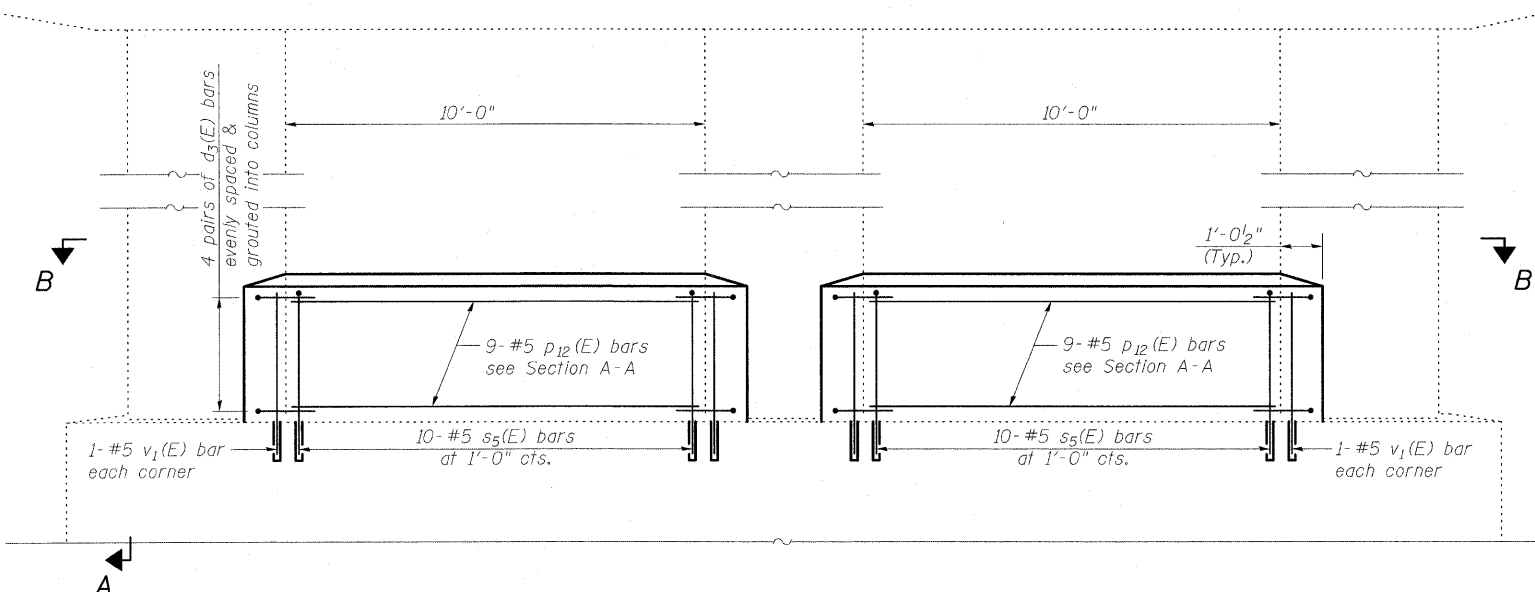


PLAN CAP



ELEVATION

(Looking North)



SECTION A-A

(Showing Bearings and Superstructure)

Notes:
For Detail A & Detail B see Sheet 22 of 27
For View B-B see Sheet 22 of 27.
Space reinforcement in cap to miss anchor bolts. Bars shall be drilled and grouted according to Section 584 of the Standard Specifications.
Concrete Sealer shall be applied only to exposed surfaces of the new concrete on Pier 1.
Cut p8(E) and p9(E) bars to fit with 2" clear.

**PIER 1 GENERAL PLAN
STRUCTURE NO. 025-0001**

DESIGNED	B.B.
CHECKED	C.J.F.
DRAWN	W.J.S.
CHECKED	C.J.F. & B.B.



SHEET NO. 21 27 SHEETS	F.A.I. RTE.	SECTION	COUNTY	TOTAL SHEETS	SHEET NO.
	57	(25-3HB)I-2	EFFINGHAM	1416	1375
SN 025-0001			CONTRACT NO. 74296		
FED. ROAD DIST. NO. 7 ILLINOIS FED. AID PROJECT					

11/21/11 AM 4/29/2010 10:25:00 74296.dgn