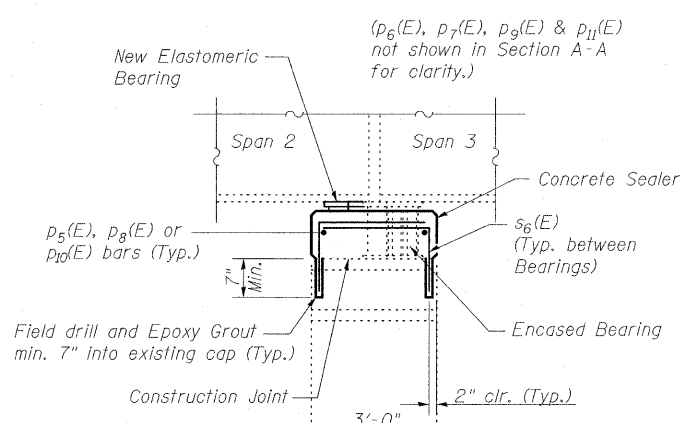
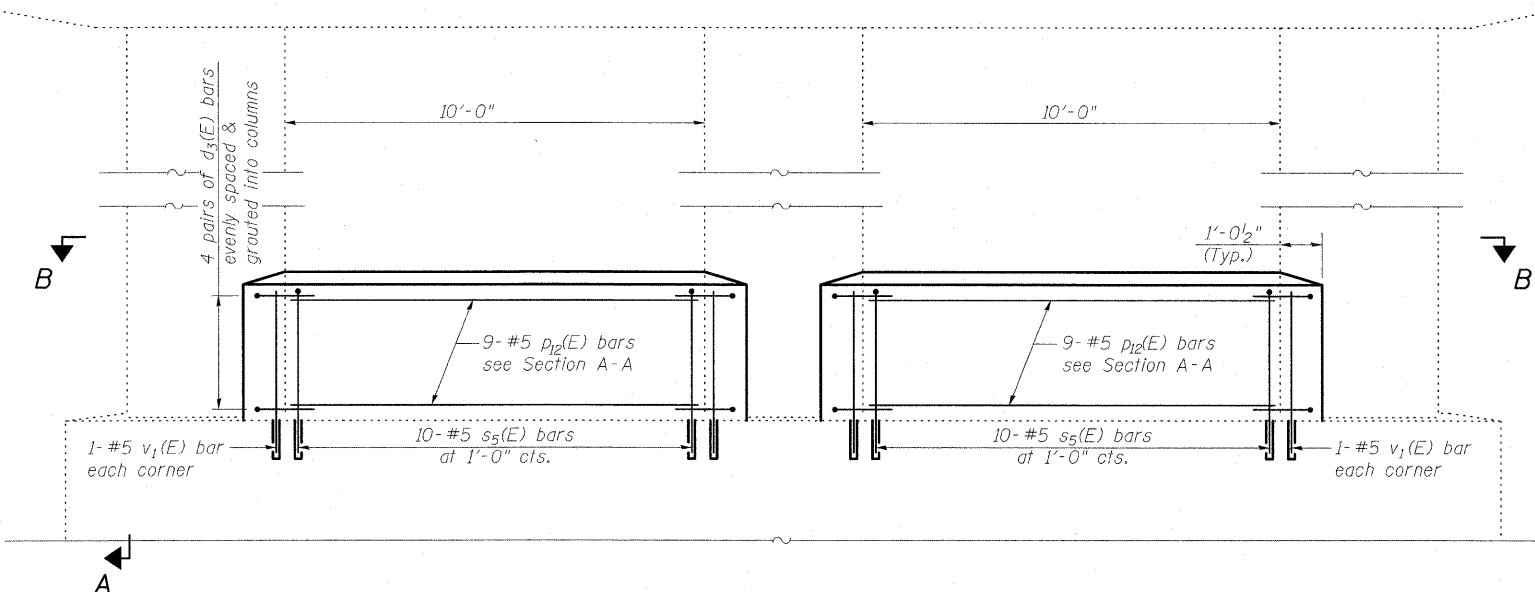
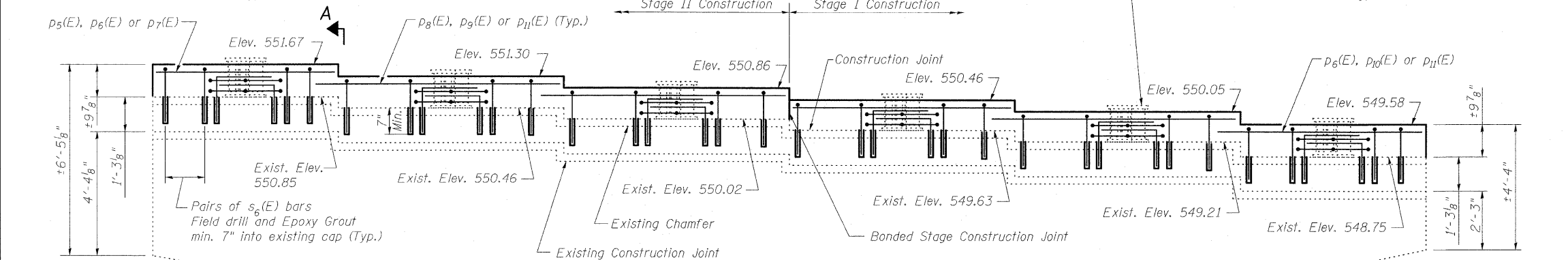
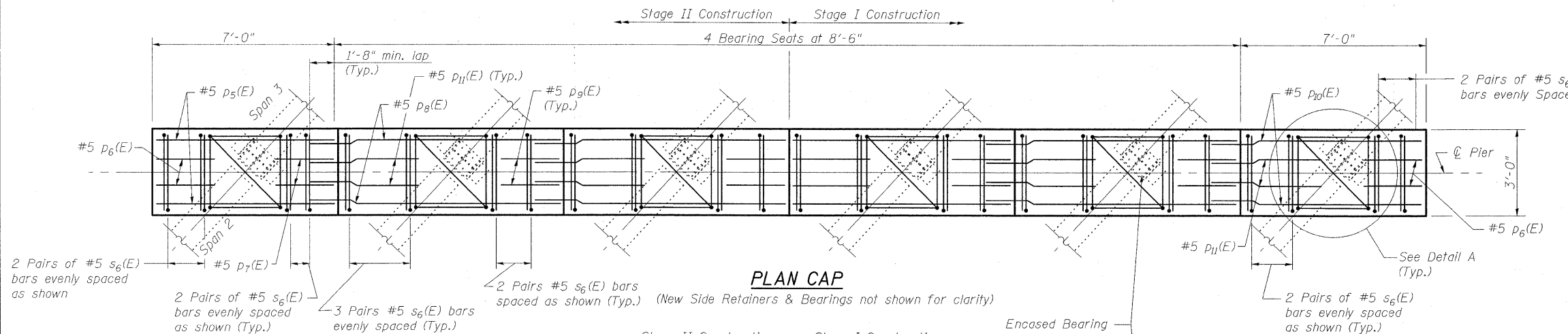


STATE OF ILLINOIS
DEPARTMENT OF TRANSPORTATION



Notes:
For Detail A see Sheet 25 of 27
For View B-B see Sheet 25 of 27.
For Bearing Removal Details see Sheet 14 of 27.
Space reinforcement in cap to miss anchor bolts. Bars shall be drilled and grouted according to Section 584 of the Standard Specifications.
Concrete Sealer shall be applied only to exposed surfaces of the new concrete on Pier 2.
Cut p8(E) and p9(E) bars to fit with 2" clear.

ELEVATION
(Looking North)

SECTION A-A
(Showing Bearings and Superstructure)

PIER 2 GENERAL PLAN
STRUCTURE NO. 025-0001

DESIGNED	B.B.
CHECKED	C.J.F.
DRAWN	W.J.S.
CHECKED	C.J.F. & B.B.

BERNARDIN LOCHMUELLER & ASSOCIATES, INC.
3 Oak Drive
Maryville, IL 62462-5655
Local (618) 388-4685
Fax 618-388-4686

SHEET NO. 24 27 SHEETS	F.A.I. RTE.	SECTION	COUNTY	TOTAL SHEETS	SHEET NO.
	57	(25-3HB)I-2	EFFINGHAM	1416	1378
SN 025-0001			CONTRACT NO. 74296		
FED. ROAD DIST. NO. 7 ILLINOIS FED. AID PROJECT					

16/3/21 AM 4/29/2010 10:25:00 142946p