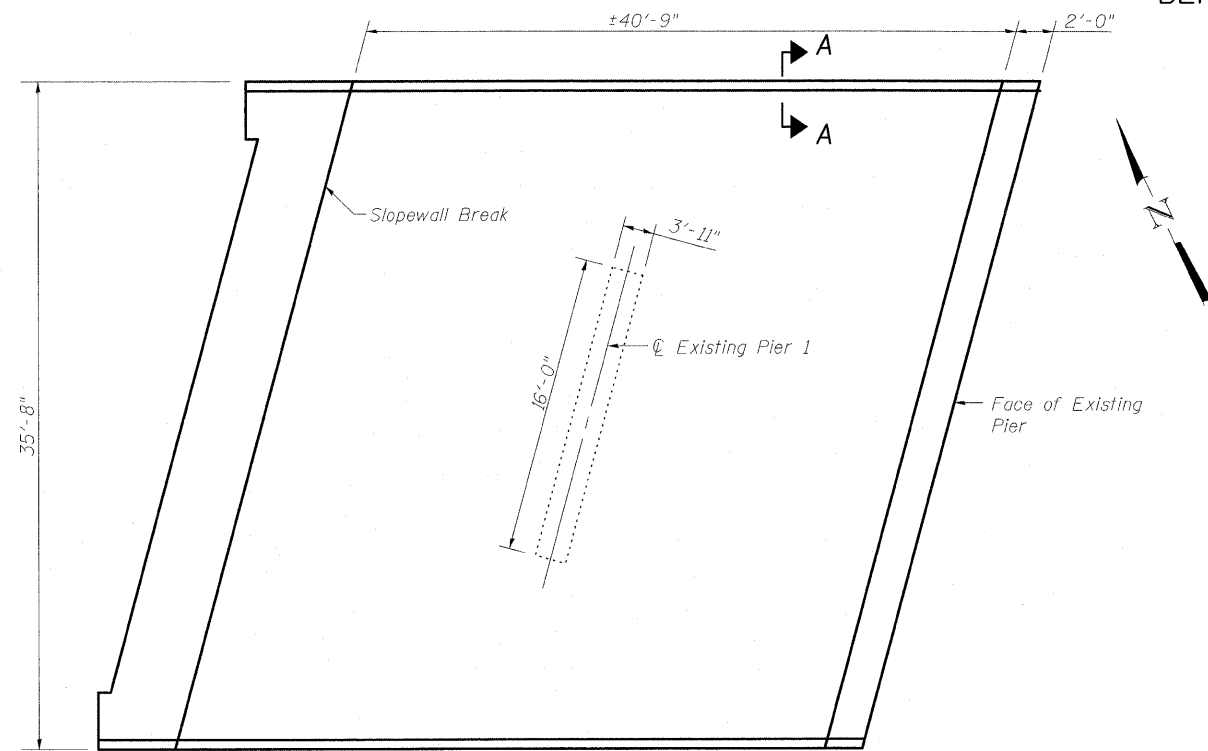
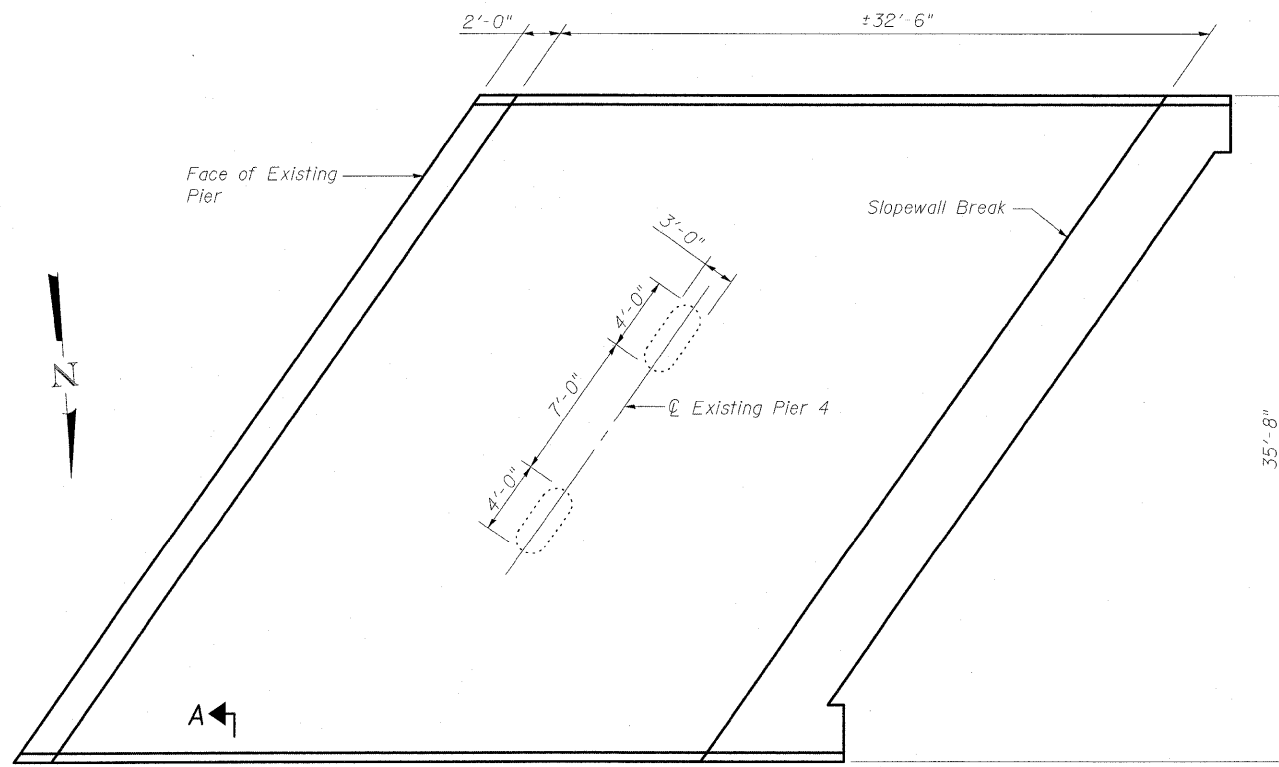


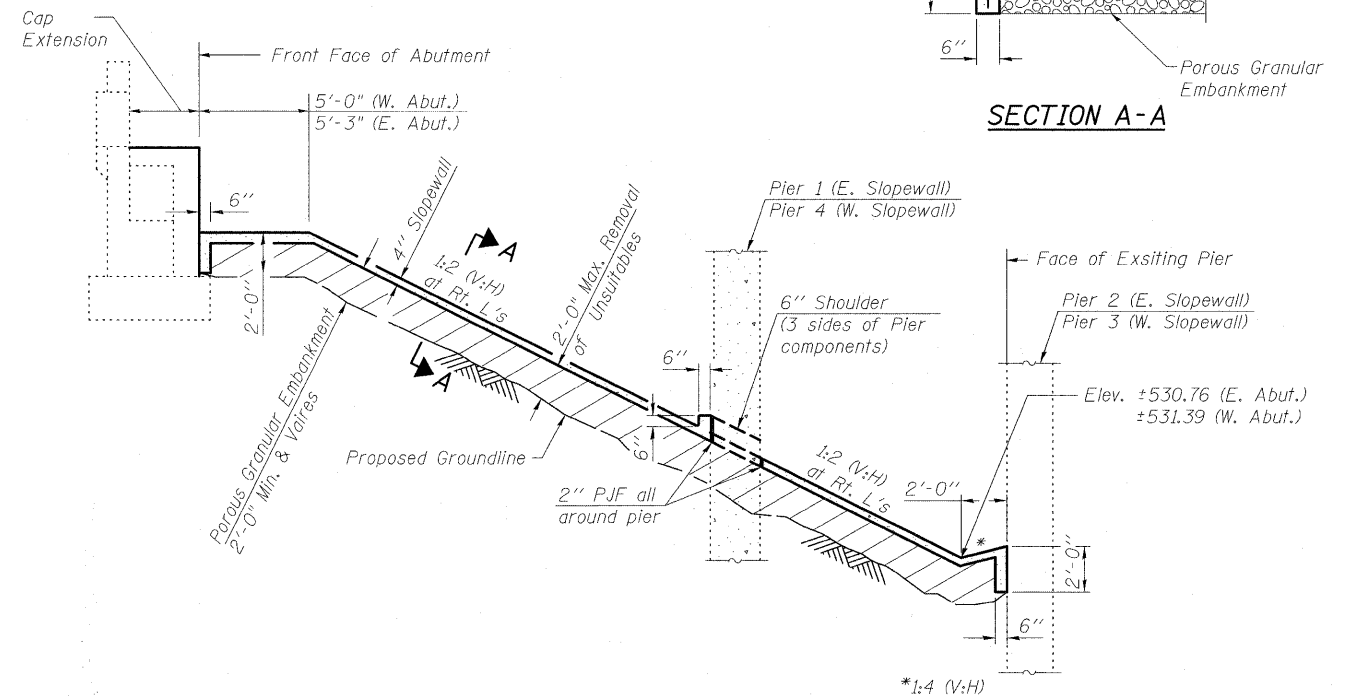
STATE OF ILLINOIS  
DEPARTMENT OF TRANSPORTATION



**EAST SLOPEWALL PLAN**  
(Showing Dimensions Along SlopeWall)



**WEST SLOPEWALL PLAN**  
(Showing Dimensions Along SlopeWall)



**TYPICAL SECTION THRU  
CONCRETE SLOPEWALL**

Indicates Removal of Unsuitable Materials and replacement with Porous Granular Embankment

**Notes:**

SlopeWall shall be reinforced with welded wire fabric, 6 in. x 6 in. - W4.0 x W4.0, weighing 58 lbs. per 100 sq. ft.  
Prior to the placement of Porous Granular Embankment, the existing ground line shall be removed at least 2'-0" below the existing slopeWall. The removal of the existing embankment shall be paid for as Removal & Disposal of Unsuitable Materials.  
Portions of the existing slopeWalls have voids in excess of 2'-0" in depth. In cases where the existing ground line has been voided under the existing slopeWall in excess of 2'-0", the embankment shall be reconstructed with Porous Granular Embankment. No Removal & Disposal of Unsuitable Materials will be required.  
See sheets 19 and 22 of 36 for slopeWall end treatment at abutments.

**BILL OF MATERIAL  
TWO SLOPEWALLS**

Item	Unit	Total
Porous Granular Embankment	Cu. Yd.	235
SlopeWall 4"	Sq. Yd.	352
Removal & Disposal of Unsuitable Materials	Cu. Yd.	240

**SLOPEWALL DETAILS  
STRUCTURE NO. 025-0018**

DESIGNED	B.B.
CHECKED	C.J.F.
DRAWN	W.J.S.
CHECKED	C.J.F. & B.B.



**BERNARDIN  
LOCHMUELLER &  
ASSOCIATES, INC.**

3 Oak Drive  
Maryville, IL 62062-5635  
Local (618) 288-4665  
Fax 618-288-4666

SHEET NO. 10 36 SHEETS	F.A.I. RTE.	SECTION	COUNTY	TOTAL SHEETS	SHEET NO.
	57	(25-3HB)I-3	EFFINGHAM	1416	1391
SN 025-0018			CONTRACT NO. 74296		
FED. ROAD DIST. NO. 7 ILLINOIS FED. AID PROJECT					