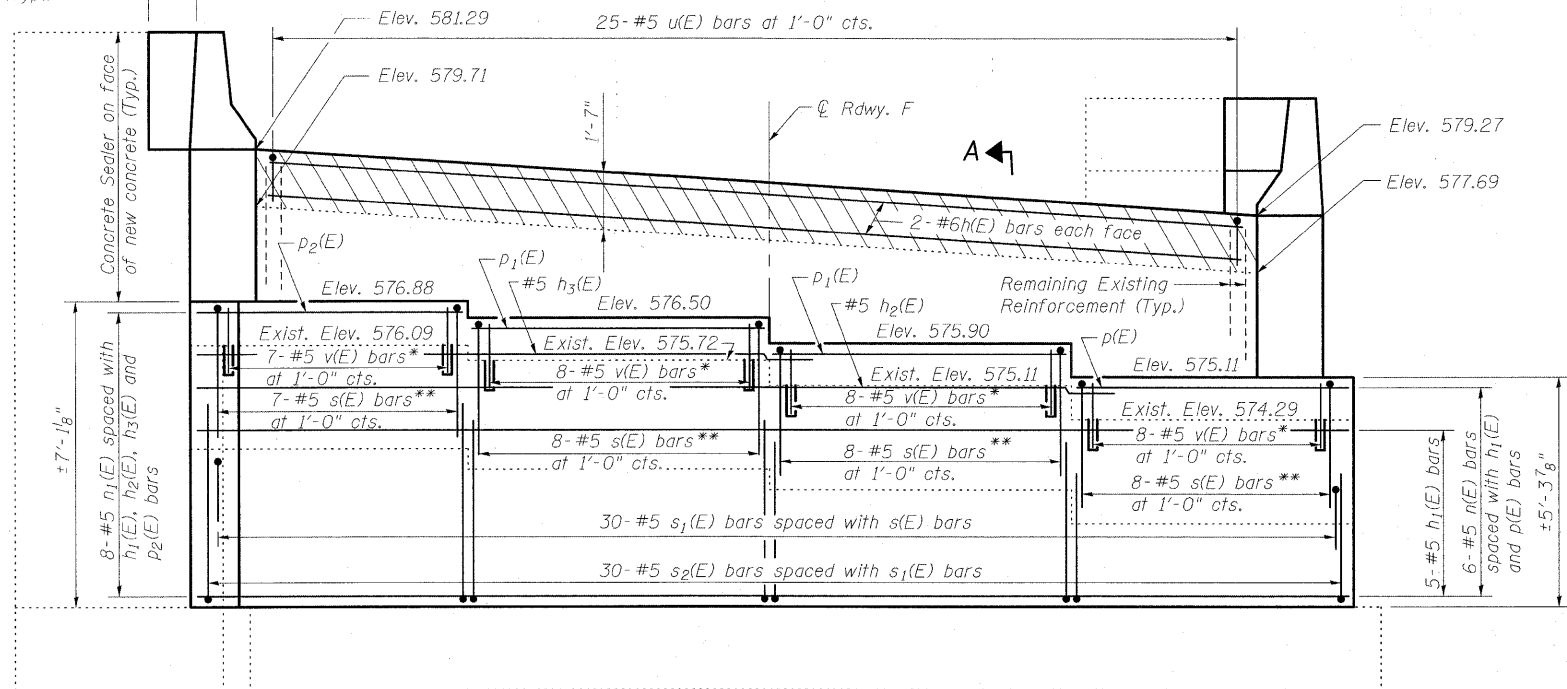


STATE OF ILLINOIS
DEPARTMENT OF TRANSPORTATION

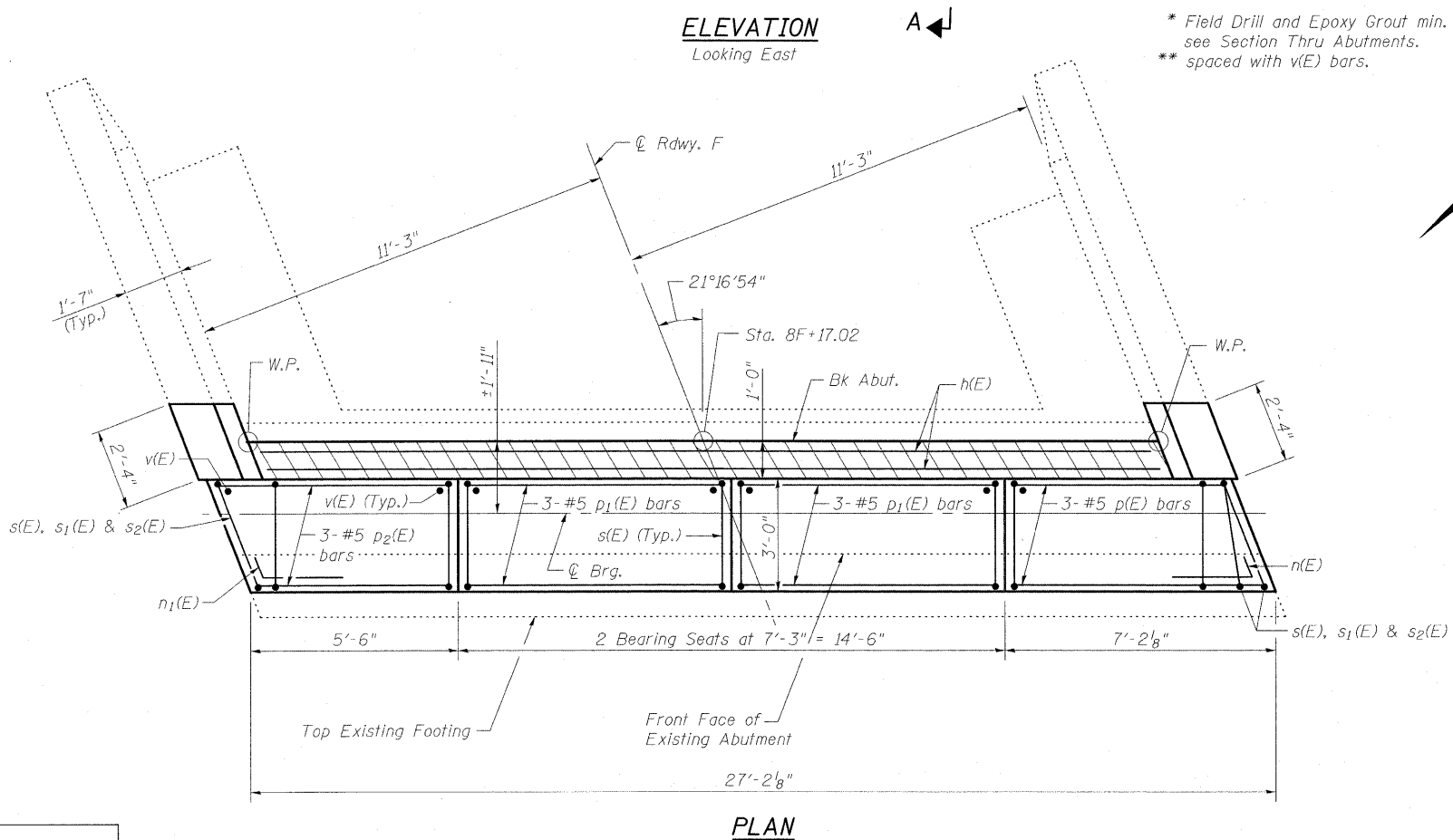
Concrete Sealer on outside
Face of wingwall (Typ.)



ELEVATION
Looking East

* Field Drill and Epoxy Grout min. 7" into existing cap.
see Section Thru Abutments.
** spaced with v(E) bars.

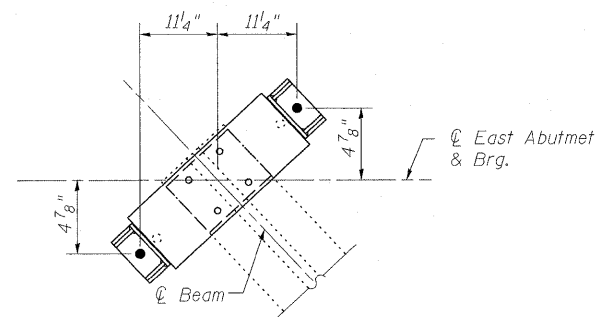
Notes:
Cut p(E) and p2(E) bars to fit with 2" clear.
For Section thru Slope Wall see Section F-F
on sheet 3 of 36.
For Section A-A see sheet 19 of 36.
Hatched area quantity of concrete included
with Concrete Superstructure.
Space reinforcement to miss Anchor Bolts.
Bars shall be drilled and grouted according to
Section 584 of the Standard Specifications.



PLAN

MIN BAR LAP

#5 bar = 1'-8"



ANCHOR BOLT DETAIL
EAST ABUTMENT

EAST ABUTMENT DETAILS
STRUCTURE NO. 025-0018

DESIGNED	B.B.
CHECKED	C.J.F.
DRAWN	W.J.S.
CHECKED	C.J.F. & B.B.



**BERNARDIN
LOCHMUELLER &
ASSOCIATES, INC.**

3 Oak Drive
Maryville, IL 62862-5635
Local (618) 338-4665
Fax 618-288-4666

SHEET NO. 18 36 SHEETS	F.A.I. RTE.	SECTION	COUNTY	TOTAL SHEETS	SHEET NO.
	57	(25-3HB)I-3	EFFINGHAM	1416	1399
SN 025-0018			CONTRACT NO. 74296		
FED. ROAD DIST. NO. 7 ILLINOIS FED. AID PROJECT					