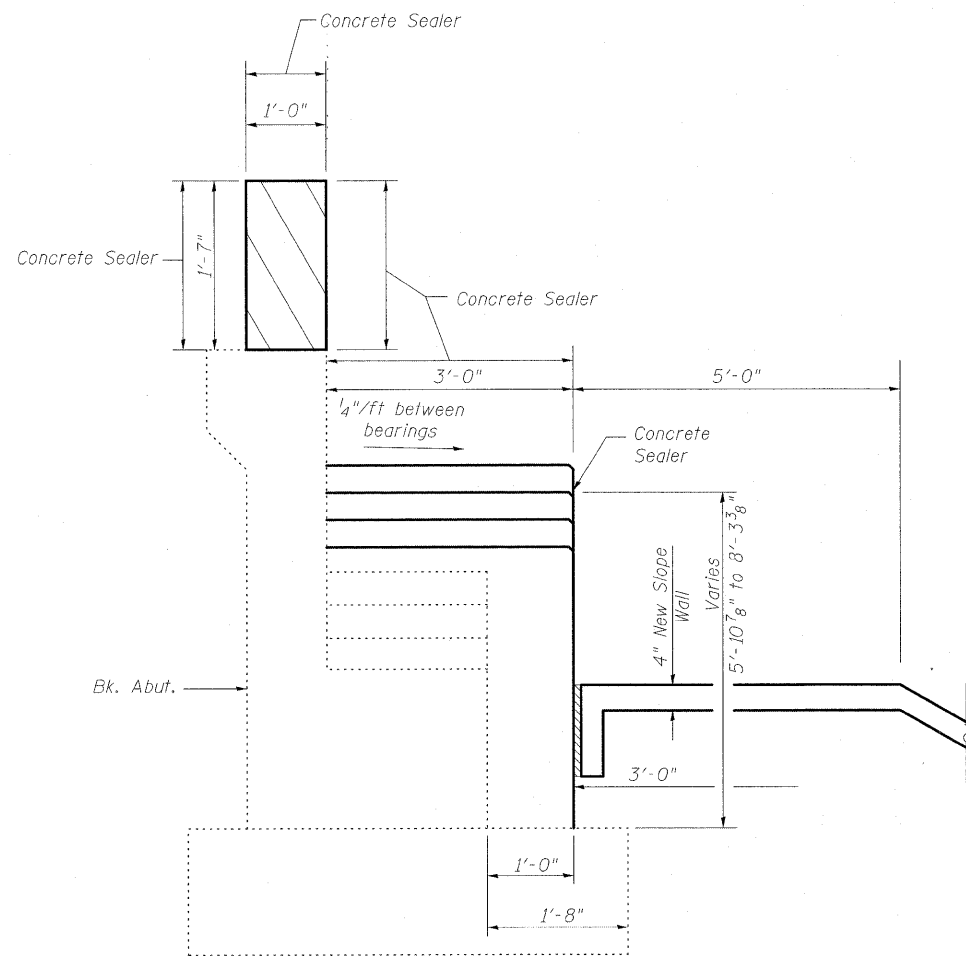
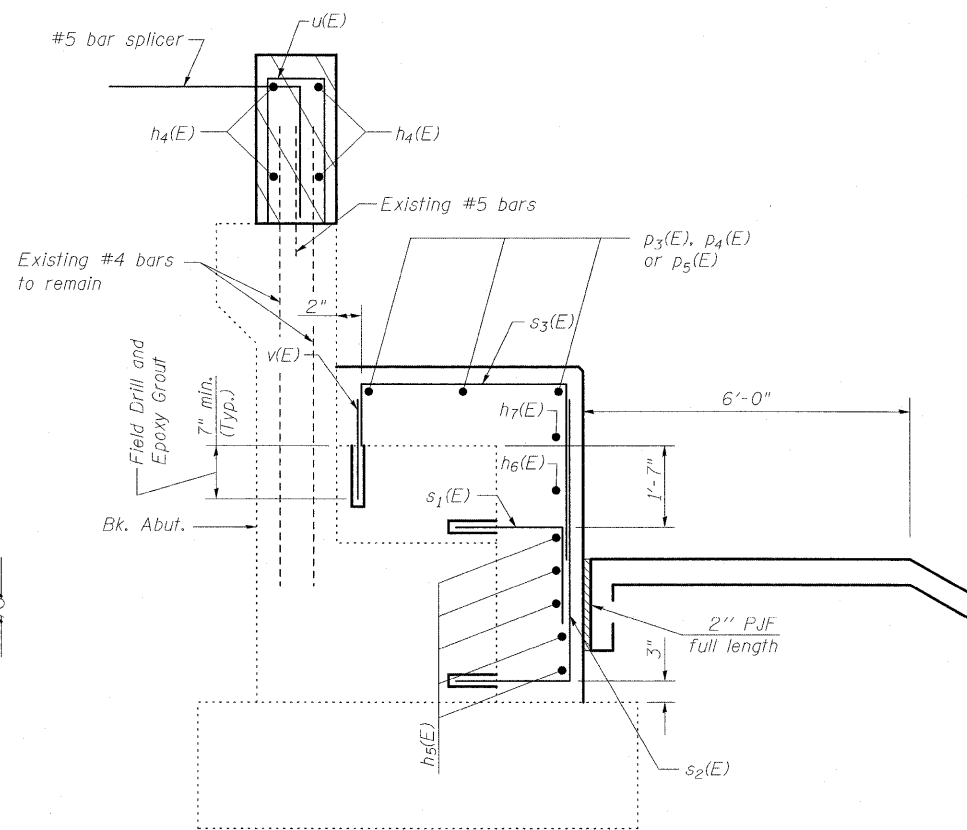


STATE OF ILLINOIS  
DEPARTMENT OF TRANSPORTATION

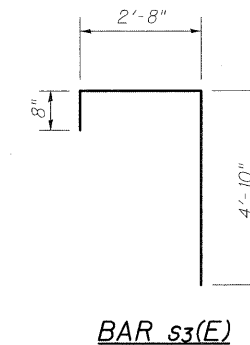
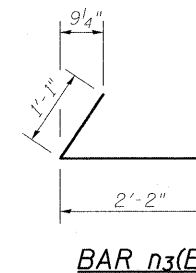
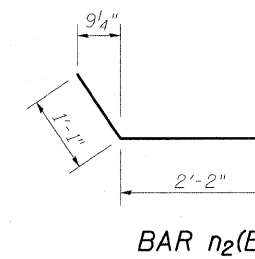


Dimensions at Rt L

**SECTION A-A  
THRU ABUTMENT  
SHOWING OUTLINE**



**SECTION A-A  
THRU ABUTMENT  
SHOWING REINFORCEMENT**



**BILL OF MATERIAL  
WEST ABUTMENT**

Bar	No.	Size	Length	Shape
h <sub>4</sub> (E)	4	#6	30'-3"	—
h <sub>5</sub> (E)	5	#5	34'-1"	—
h <sub>6</sub> (E)	1	#5	29'-2"	—
h <sub>7</sub> (E)	1	#5	20'-5"	—
n <sub>2</sub> (E)	6	#5	3'-3"	┘
n <sub>3</sub> (E)	8	#5	3'-3"	┘
p <sub>3</sub> (E)	3	#5	9'-1"	—
p <sub>4</sub> (E)	6	#5	8'-5"	—
p <sub>5</sub> (E)	3	#5	9'-10"	—
s <sub>1</sub> (E)	39	#5	2'-10"	┘
s <sub>2</sub> (E)	39	#5	6'-2"	┘
s <sub>3</sub> (E)	40	#5	8'-2"	┘
u(E)	31	#5	3'-6"	□
v(E)	40	#5	1'-2"	—
Concrete Sealer		Sq. Ft.	571	
Concrete Structures		Cu. Yd.	12.9	
Reinforcement Bars, Epoxy Coated		Pound	1440	
Bar Splicers		Each	31	

Notes:  
For Endpost details see Sheet 7 of 36.  
Hatched area quantity of concrete included with Concrete Superstructure.  
Bars shall be drilled and grouted according to Section 584 of the Standard Specifications.  
Cost of Slopewall Footing included with Slopewall, 4".  
Apply Concrete Sealer to exposed horizontal and vertical faces of abutment extension.  
For additional bar details see Sheet 19 of 36.

**WEST ABUTMENT SECTIONS  
STRUCTURE NO. 025-0018**

DESIGNED	B.B.
CHECKED	C.J.F.
DRAWN	W.J.S.
CHECKED	C.J.F. & B.B.



**BERNARDIN  
LOCHMUELLER &  
ASSOCIATES, INC.**

3 Oak Drive  
Maryville, IL 62062-2635  
Local: (618) 398-4055  
Fax: 618-398-4696

SHEET NO. 22 36 SHEETS	F.A.I. RTE.	SECTION	COUNTY	TOTAL SHEETS	SHEET NO.
	57	(25-3HB)I-3	EFFINGHAM	1416	1403
SN 025-0018			CONTRACT NO. 74296		
FED. ROAD DIST. NO. 7 ILLINOIS FED. AID PROJECT					