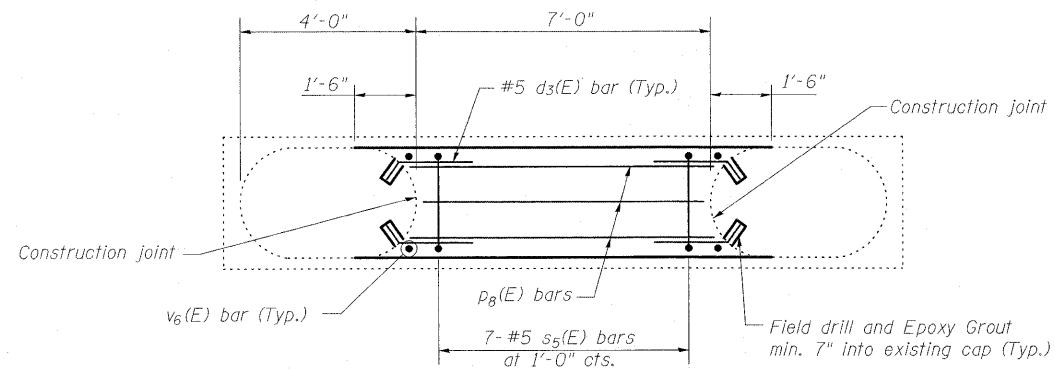
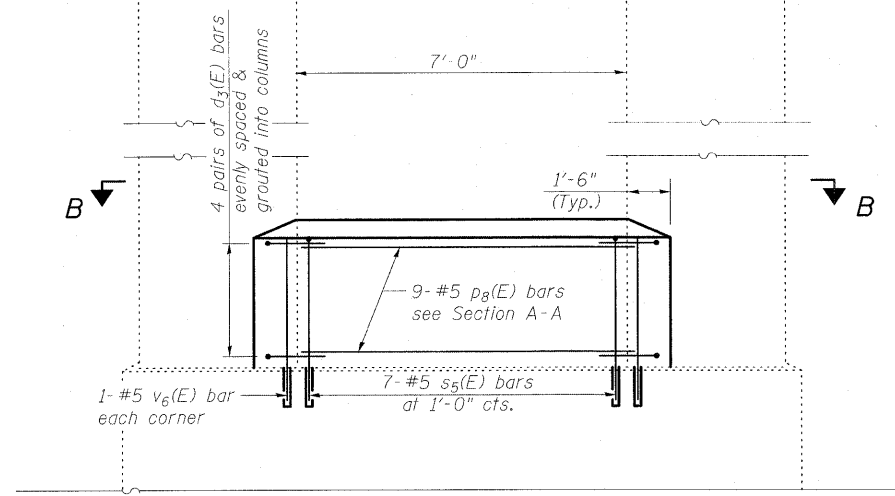
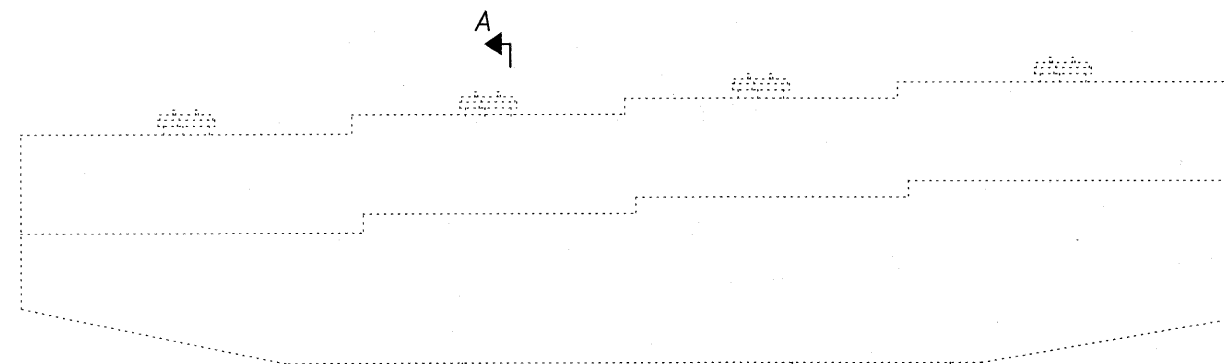


STATE OF ILLINOIS
DEPARTMENT OF TRANSPORTATION

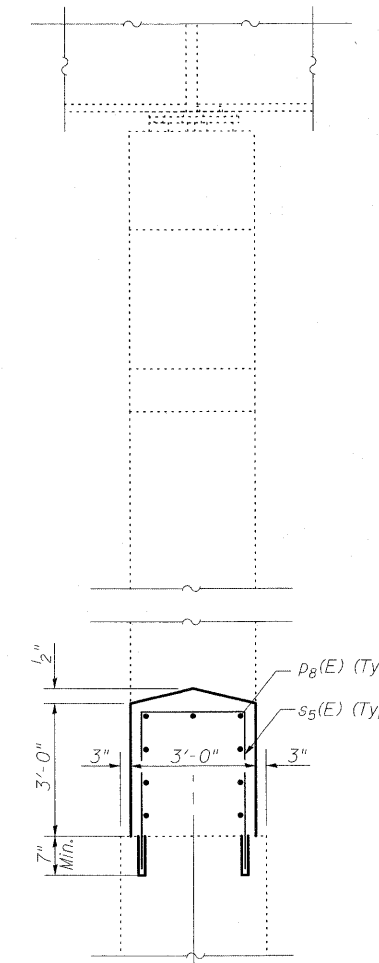


VIEW B-B
CRASHWALL PLAN - PIER 3



ELEVATION
(Looking West)

Notes:
Bars shall be drilled and grouted according to Section 584 of the Standard Specifications.
Concrete Sealer shall be applied only to exposed surfaces of the new concrete on Pier 3.
See Sheet 26 of 36 for Bar Bend details.



SECTION A-A
(Showing Bearings and Superstructure)

BILL OF MATERIAL
PIER 3

Bar	No.	Size	Length	Shape	
d ₃ (E)	16	#5	2'-10"	—	
p ₈ (E)	9	#5	6'-8"	—	
s ₅ (E)	7	#5	9'-6"	□	
v ₆ (E)	4	#5	3'-5"	—	
Concrete Sealer				Sq. Ft.	83
Concrete Structures				Cu. Yd.	2.5
Reinforcement Bars, Epoxy Coated				Pound	200

PIER 3 GENERAL PLAN
AND DETAILS
STRUCTURE NO. 025-0018

DESIGNED	B.B.
CHECKED	C.J.F.
DRAWN	W.J.S.
CHECKED	C.J.F. & B.B.



BERNARDIN
LOCHMUELLER &
ASSOCIATES, INC.

3 Oak Drive
Maryville, IL 62442-5685
Local: (618) 288-4665
Fax: 618-288-4666

SHEET NO. 28 36 SHEETS	F.A.I. RTE.	SECTION	COUNTY	TOTAL SHEETS	SHEET NO.
	57	(25-3HB)I-3	EFFINGHAM	1416	1409
SN 025-0018			CONTRACT NO. 74296		
FED. ROAD DIST. NO. 7 ILLINOIS FED. AID PROJECT					