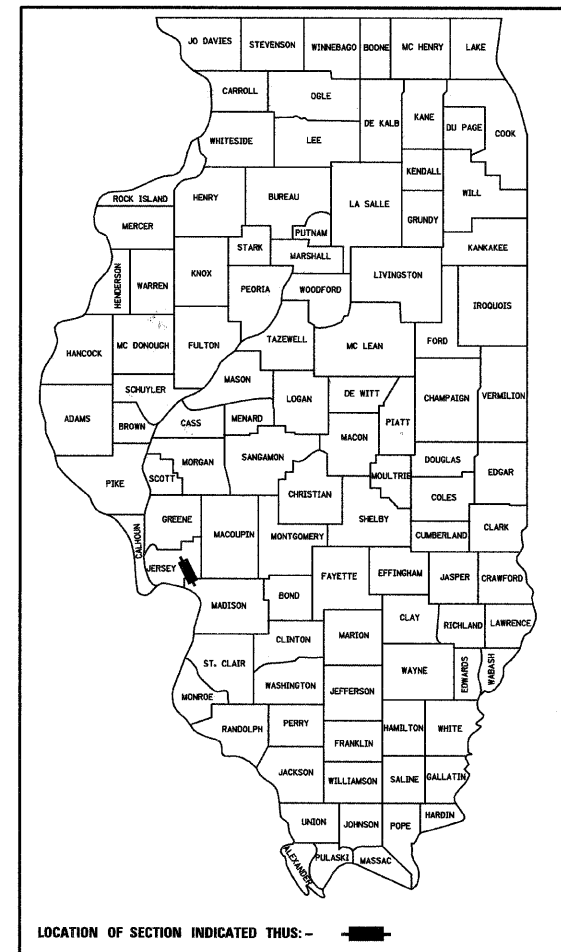


STATE OF ILLINOIS
DEPARTMENT OF TRANSPORTATION
DIVISION OF HIGHWAYS

PLANS FOR PROPOSED
HIGHWAY IMPROVEMENT

FOR INDEX OF SHEETS, SEE SHEET NO. 2

FAP ROUTE	SECTION	COUNTY	TOTAL SHEETS	SHEET NO.
310	60-16-1&1B, 42-1&1B	MADISON AND JERSEY	481	1
FED. ROAD DIST. NO.		ILLINOIS	FED. AID PROJECT	310
D-98-034-00		CONTRACT NO. 76318		



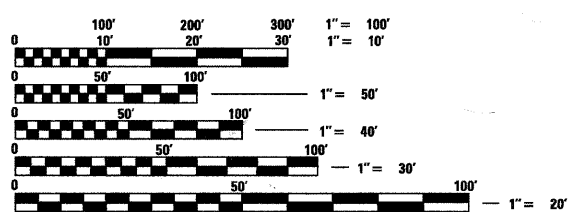
FAP ROUTE 310 (US 67)
SECTION 60-16-1&1B, 42-1&1B
MADISON CO. LINE NORTH OF
GODFREY TO DELHI BYPASS
FOUR-LANE EXPRESSWAY
MADISON AND JERSEY COUNTY

PROJ. ACNHF-0310(141)

PROJECT ENGINEER: PATTI J. LEBEAU
SQUAD LEADER: CHERYL KEPLAR
PHONE NO.: 1-618-346-3179
PHONE NO.: 1-618-346-3186

DESIGN DESIGNATION
FAP 310 - 2021 ADT = 20,000 EXPRESSWAY - 6.41 (FD-20)
2001 ADT = 11,500
2015 ADT = 17,450

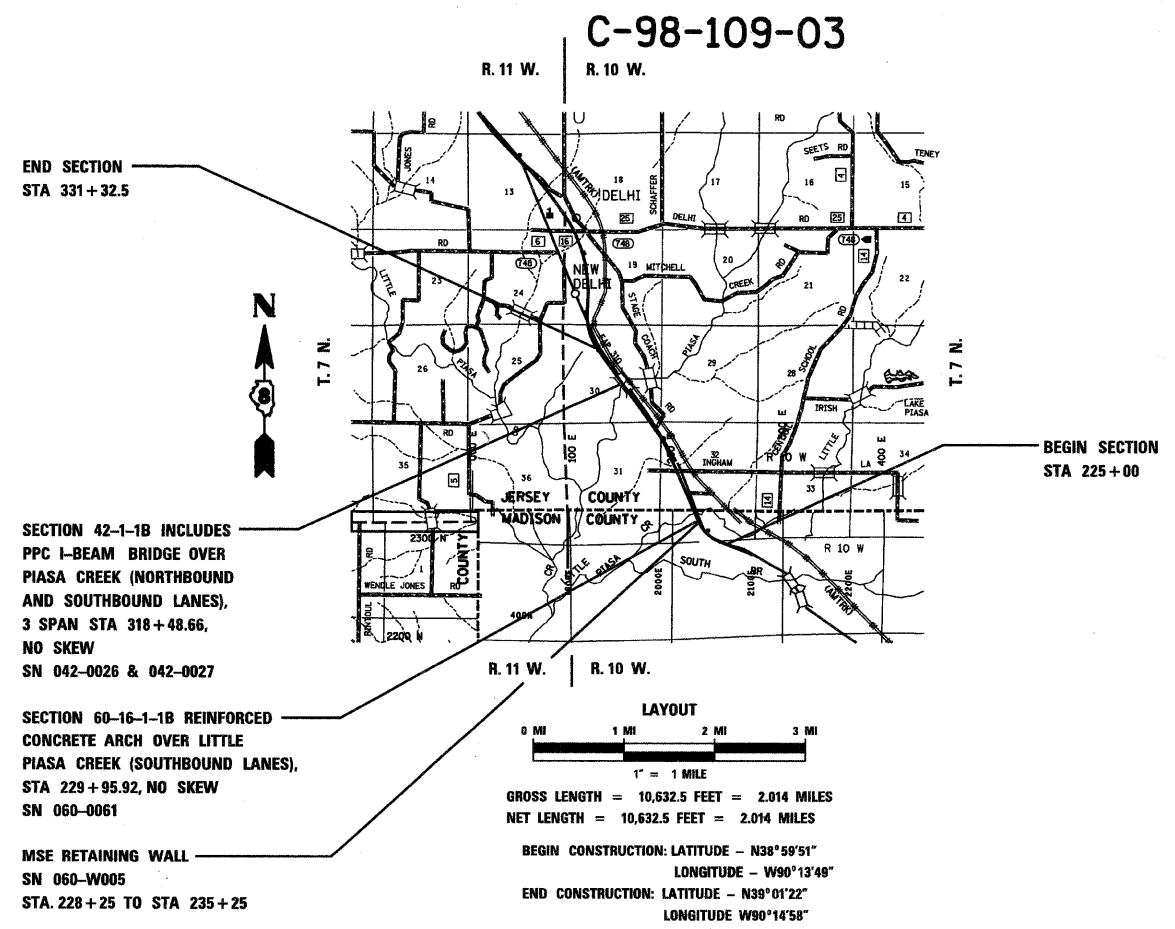
MICROFILMED _____
REEL NUMBER _____
AWARDED _____
RESIDENT ENGINEER _____
AS BUILT CHANGES WERE MADE
ON THE FOLLOWING SHEETS



FULL SIZE PLANS HAVE BEEN PREPARED USING STANDARD
ENGINEERING SCALES, REDUCED SIZED PLANS WILL NOT
CONFORM TO STANDARD SCALES, IN MAKING MEASUREMENTS
ON REDUCED PLANS, THE ABOVE SCALES MAY BE USED.

J.U.L.I.E.
JOINT UTILITY LOCATION INFORMATION FOR EXCAVATION
1-800-892-0123

CONTRACT NO. 76318



SECTION 42-1-1B INCLUDES
PPC I-BEAM BRIDGE OVER
PIASA CREEK (NORTHBOUND
AND SOUTHBOUND LANES),
3 SPAN STA 318+48.66,
NO SKEW
SN 042-0026 & 042-0027

SECTION 60-16-1-1B REINFORCED
CONCRETE ARCH OVER LITTLE
PIASA CREEK (SOUTHBOUND LANES),
STA 229+95.92, NO SKEW
SN 060-0061

MSE RETAINING WALL
SN 060-W005
STA. 228+25 TO STA 235+25

LAYOUT
0 MI 1 MI 2 MI 3 MI
1" = 1 MILE
GROSS LENGTH = 10,632.5 FEET = 2.014 MILES
NET LENGTH = 10,632.5 FEET = 2.014 MILES
BEGIN CONSTRUCTION: LATITUDE - N38°59'51"
LONGITUDE - W90°13'49"
END CONSTRUCTION: LATITUDE - N39°01'22"
LONGITUDE W90°14'58"

C-98-109-03

EXPIRES Nov 30, 2011
RESPONSIBLE FOR SHEETS W/
HOMER L CHASTAIN LOGO
AND ALL SHEETS WITHOUT A LOGO

EXPIRES Nov 30, 2011
RESPONSIBLE FOR SHEETS W/
HUTCHISON ENGINEERING LOGO

EXPIRES Nov. 30, 2011
RESPONSIBLE FOR SHEETS W/
HURST-ROSCHKE ENGINEERING LOGO

STATE OF ILLINOIS
DEPARTMENT OF TRANSPORTATION
DIVISION OF HIGHWAYS

SUBMITTED March 18 20 10
Mary C. James
DEPUTY DIRECTOR OF HIGHWAYS REGION FIVE ENGINEER

PASSED May 7 20 10
Scott E. Stitt, P.E.
ENGINEER OF DESIGN AND ENVIRONMENT

APPROVED May 7 20 10
Christine M. Roadler
DIRECTOR, DIVISION OF HIGHWAYS

HOMER L.
CHASTAIN
& ASSOCIATES, LLP
CONSULTING ENGINEERS
DECATUR (317) 422-8544
CHICAGO (773) 714-0050
ROCKFORD (815) 489-0050
184-001397

PRINTED BY THE AUTHORITY OF THE STATE OF ILLINOIS