

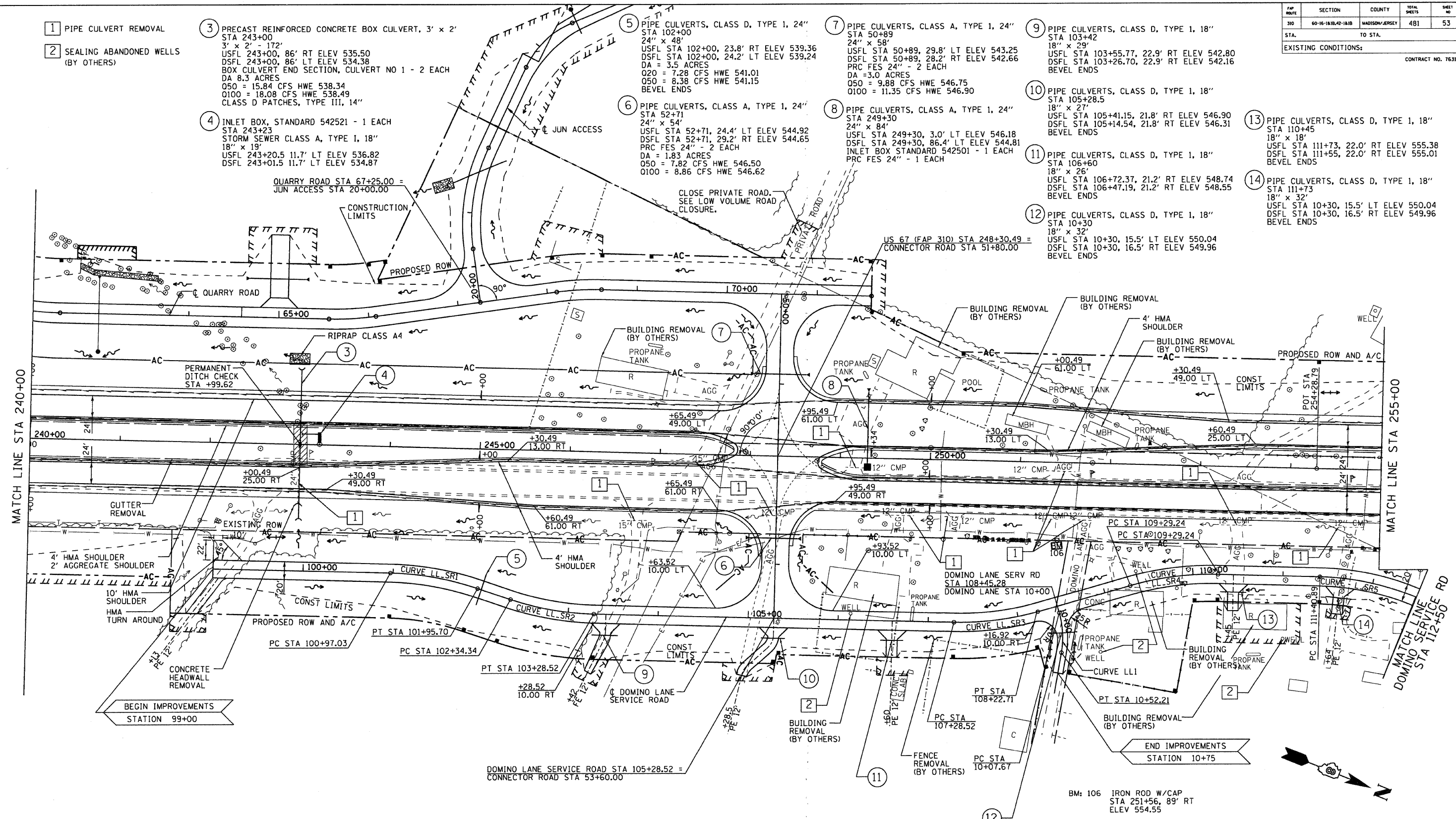
FAP ROUTE	SECTION	COUNTY	TOTAL SHEETS	SHEET NO.
310	60-16-1&1B,42-1&1B	MADISON/JERSEY	481	53

EXISTING CONDITIONS:

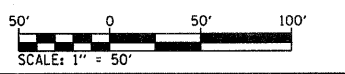
CONTRACT NO. 76318

- 1 PIPE CULVERT REMOVAL
- 2 SEALING ABANDONED WELLS (BY OTHERS)
- 3 PRECAST REINFORCED CONCRETE BOX CULVERT, 3' x 2' 3" x 2' - 172' USFL 243+00, 86' RT ELEV 535.50 DSFL 243+00, 86' LT ELEV 534.38 BOX CULVERT END SECTION, CULVERT NO 1 - 2 EACH DA 8.3 ACRES O50 = 15.84 CFS HWE 538.34 O100 = 18.08 CFS HWE 538.49 CLASS D PATCHES, TYPE III, 14"
- 4 INLET BOX, STANDARD 542521 - 1 EACH STA 243+23 STORM SEWER CLASS A, TYPE I, 18" x 19" USFL 243+20.5 11.7' LT ELEV 536.82 DSFL 243+01.5 11.7' LT ELEV 534.87
- 5 PIPE CULVERTS, CLASS D, TYPE 1, 24" x 48" STA 102+00 USFL STA 102+00, 23.8' RT ELEV 539.36 DSFL STA 102+00, 24.2' LT ELEV 539.24 DA = 3.5 ACRES O20 = 7.28 CFS HWE 541.01 O50 = 8.38 CFS HWE 541.15 BEVEL ENDS
- 6 PIPE CULVERTS, CLASS A, TYPE 1, 24" x 54" STA 52+71 USFL STA 52+71, 24.4' LT ELEV 544.92 DSFL STA 52+71, 29.2' RT ELEV 544.65 PRC FES 24" - 2 EACH DA = 1.83 ACRES O50 = 7.82 CFS HWE 546.50 O100 = 8.86 CFS HWE 546.62
- 7 PIPE CULVERTS, CLASS A, TYPE 1, 24" x 58" STA 50+89 USFL STA 50+89, 29.8' LT ELEV 543.25 DSFL STA 50+89, 28.2' RT ELEV 542.66 PRC FES 24" - 2 EACH DA = 3.0 ACRES O50 = 9.88 CFS HWE 546.75 O100 = 11.35 CFS HWE 546.90
- 8 PIPE CULVERTS, CLASS A, TYPE 1, 24" x 84" STA 249+30 USFL STA 249+30, 3.0' LT ELEV 546.18 DSFL STA 249+30, 86.4' LT ELEV 544.81 INLET BOX STANDARD 542501 - 1 EACH PRC FES 24" - 1 EACH
- 9 PIPE CULVERTS, CLASS D, TYPE 1, 18" x 29" STA 103+42 USFL STA 103+55.77, 22.9' RT ELEV 542.80 DSFL STA 103+26.70, 22.9' RT ELEV 542.16 BEVEL ENDS
- 10 PIPE CULVERTS, CLASS D, TYPE 1, 18" x 27" STA 105+28.5 USFL STA 105+41.15, 21.8' RT ELEV 546.90 DSFL STA 105+14.54, 21.8' RT ELEV 546.31 BEVEL ENDS
- 11 PIPE CULVERTS, CLASS D, TYPE 1, 18" x 26" STA 106+60 USFL STA 106+72.37, 21.2' RT ELEV 548.74 DSFL STA 106+47.19, 21.2' RT ELEV 548.55 BEVEL ENDS
- 12 PIPE CULVERTS, CLASS D, TYPE 1, 18" x 32" STA 10+30 USFL STA 10+30, 15.5' LT ELEV 550.04 DSFL STA 10+30, 16.5' RT ELEV 549.96 BEVEL ENDS
- 13 PIPE CULVERTS, CLASS D, TYPE 1, 18" x 18" STA 110+45 USFL STA 111+73, 22.0' RT ELEV 555.38 DSFL STA 111+55, 22.0' RT ELEV 555.01 BEVEL ENDS
- 14 PIPE CULVERTS, CLASS D, TYPE 1, 18" x 32" STA 111+73 USFL STA 10+30, 15.5' LT ELEV 550.04 DSFL STA 10+30, 16.5' RT ELEV 549.96 BEVEL ENDS

DATE	
BY	
REVISIONS	
NO.	
DESCRIPTION	



PR CURVE LL.SR1 PI STA 101+46.74 Δ = 17° 07' 55" (RT) D = 17° 21' 44" T = 49.71' R = 330.00' L = 98.67' E = 3.72' PC STA 100+97.03 PT STA 101+95.70	PR CURVE LL.SR2 PI STA 102+81.78 Δ = 17° 07' 55" (LT) D = 18° 11' 21" T = 47.45' R = 315.00' L = 94.19' E = 3.55' PC STA 102+34.34 PT STA 103+28.52	PR CURVE LL1 PI STA 10+30.31 Δ = 25° 31' 08" (RT) D = 57° 17' 45" T = 22.65' R = 100.00' L = 44.54' E = 2.53' PC STA 10+07.67 PT STA 10+52.21	PR CURVE LL.SR3 PI STA 107+75.97 Δ = 17° 07' 54" (LT) D = 18° 11' 21" T = 47.45' R = 315.00' L = 94.19' E = 3.55' PC STA 107+28.52 PT STA 108+22.71	PR CURVE LL.SR4 PI STA 109+78.95 Δ = 17° 07' 55" (RT) D = 17° 21' 44" T = 49.71' R = 330.00' L = 125.24' E = 3.72' PC STA 109+29.24 PT STA 110+27.91	PR CURVE LL.SR5 PI STA 112+04.44 Δ = 23° 55' 11" (RT) D = 19° 05' 55" T = 63.55' R = 300.00' L = 125.24' E = 6.66' e = 0.04 TR = 23 SE RUN IN STA 110+74.56 TO 111+73.56 SE RUN OUT STA 112+33.47 TO 113+32.47 PC STA 111+40.89 PT STA 112+66.14
--	--	--	--	---	---



ILLINOIS DEPARTMENT OF TRANSPORTATION
ROADWAY PLAN STA 240+00 TO 255+00

FAP ROUTE 310
SECTION 60-16-1&1B,42-1&1B
MADISON/JERSEY COUNTY

DRAWN BY: EMR CHECKED BY: GLF

REVISIONS	
NAME	DATE