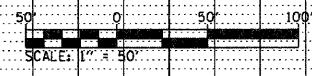


FAP ROUTE	SECTION	COUNTY	TOTAL SHEETS	SHEET NO.
310	60-16-181B,42-181B	MADISON AND JERSEY	481	54

STA. TO STA.

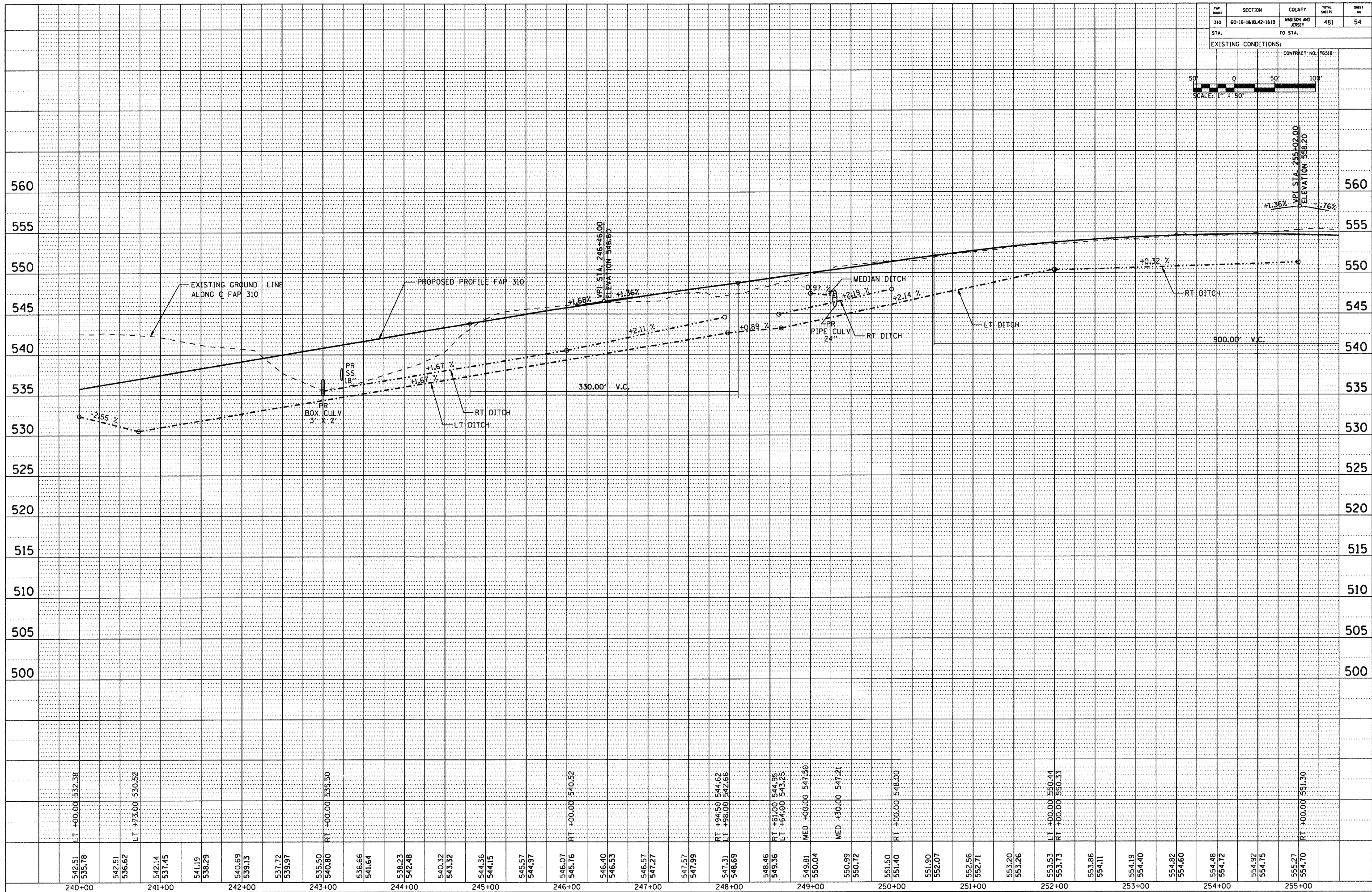
EXISTING CONDITIONS:



CONTRACT NO. 1631B

PLAN	REVIEWED	BY	DATE
NO.	NO.		

PROFILE	REVIEWED	BY	DATE
NO.	NO.		



STA 240+00 TO STA 255+00