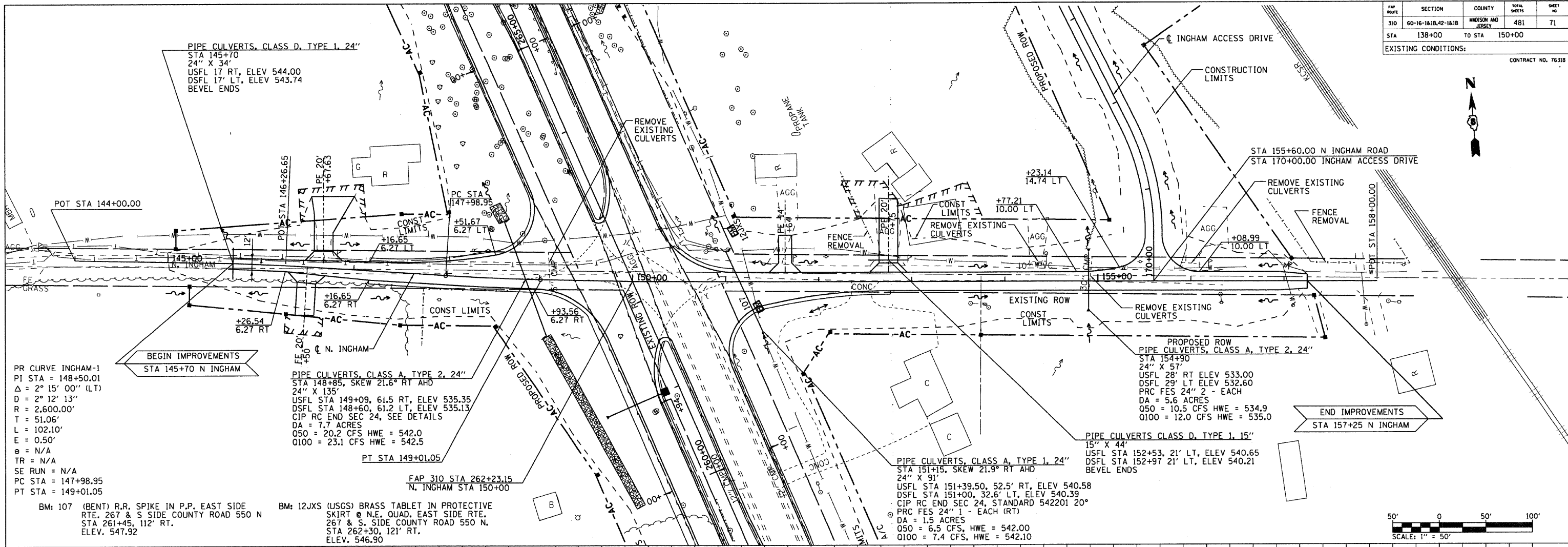


FAP ROUTE	SECTION	COUNTY	TOTAL SHEETS	SHEET NO.
310	60-16-1&1B,42-1&1B	MADISON AND JERSEY	481	71
STA 138+00		TO STA 150+00		
EXISTING CONDITIONS:				
CONTRACT NO. 76318				



PR CURVE INGHAM-1  
 PI STA = 148+50.01  
 $\Delta = 2^\circ 15' 00''$  (LT)  
 $D = 2^\circ 12' 13''$   
 $R = 2,600.00'$   
 $T = 51.06'$   
 $L = 102.10'$   
 $E = 0.50'$   
 $e = N/A$   
 $TR = N/A$   
 $SE RUN = N/A$   
 $PC STA = 147+98.95$   
 $PT STA = 149+01.05$

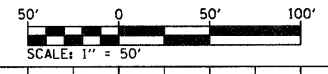
BEGIN IMPROVEMENTS  
 STA 145+70 N INGHAM

PIPE CULVERTS, CLASS A, TYPE 2, 24"  
 STA 148+85, SKEW 21.6° RT AHD  
 24" X 135'  
 USFL STA 149+09, 61.5 RT, ELEV 535.35  
 DSFL STA 148+60, 61.2 LT, ELEV 535.13  
 CIP RC END SEC 24, SEE DETAILS  
 DA = 7.7 ACRES  
 050 = 20.2 CFS HWE = 542.0  
 0100 = 23.1 CFS HWE = 542.5

PIPE CULVERTS, CLASS A, TYPE 1, 24"  
 STA 151+15, SKEW 21.9° RT AHD  
 24" X 91'  
 USFL STA 151+39.50, 52.5' RT, ELEV 540.58  
 DSFL STA 151+00, 32.6' LT, ELEV 540.39  
 CIP RC END SEC 24, STANDARD 542201 20°  
 PRC FES 24" 1 - EACH (RT)  
 DA = 1.5 ACRES  
 050 = 6.5 CFS, HWE = 542.00  
 0100 = 7.4 CFS, HWE = 542.10

BM: 107 (BENT) R.R. SPIKE IN P.P. EAST SIDE  
 RTE. 267 & S SIDE COUNTY ROAD 550 N  
 STA 261+45, 112' RT.  
 ELEV. 547.92

BM: 12JXS (USGS) BRASS TABLET IN PROTECTIVE  
 SKIRT @ N.E. QUAD, EAST SIDE RTE.  
 267 & S. SIDE COUNTY ROAD 550 N.  
 STA 262+30, 121' RT.  
 ELEV. 546.90



DATE	BY	REVIEWED	PLOTTED	CHECKED	NO. OF WAY CHECKED	PAID FILE NAME

DATE	BY	REVIEWED	PLOTTED	CHECKED	NO. OF WAY CHECKED	PAID FILE NAME

