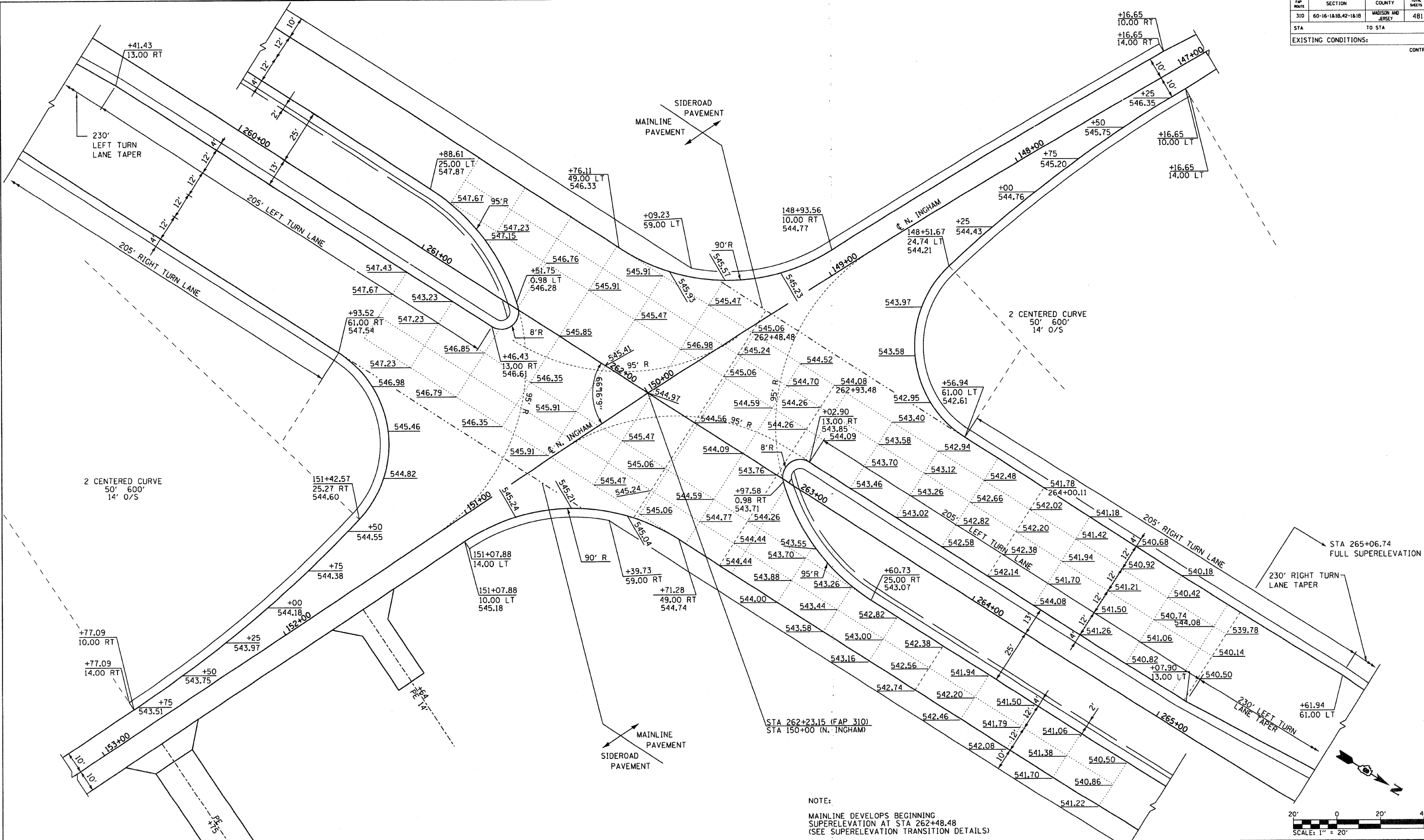


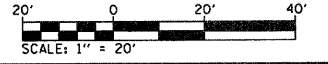
FAP ROUTE	SECTION	COUNTY	TOTAL SHEETS	SHEET NO.
310	60-16-1&1B,42-1&1B	MADISON AND JERSEY	481	129
STA	TO STA			
EXISTING CONDITIONS:				

CONTRACT NO. 76318

DATE	
BY	
PLAN	
NO.	
CHECKED	
NO.	
FILE NAME	



NOTE:
 MAINLINE DEVELOPS BEGINNING
 SUPERELEVATION AT STA 262+48.48
 (SEE SUPERELEVATION TRANSITION DETAILS)



ILLINOIS DEPARTMENT OF TRANSPORTATION
INTERSECTION DETAILS
 NORTH INGHAM ROAD
 FAP ROUTE 310
 SECTION 60-16-1&1B,42-1&1B
 MADISON AND JERSEY COUNTY

REVISIONS	
NAME	DATE

DRAWN BY: EMR CHECKED BY: GLF