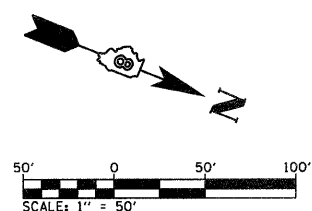
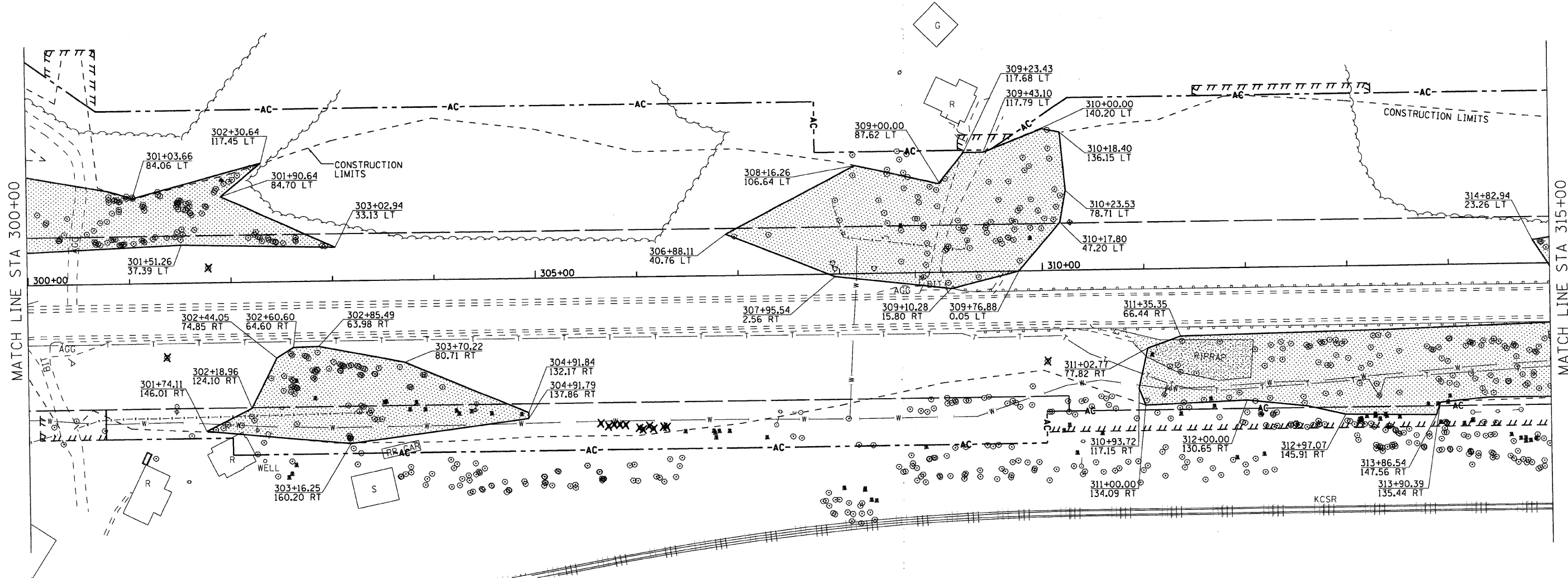


FAP ROUTE	SECTION	COUNTY	TOTAL SHEETS	SHEET NO.
310	60-16-1&1B,42-1&1B	MADISON/JERSEY	481	147
STA.	TO STA.			

EXISTING CONDITIONS:
CONTRACT NO. 76318

PLAN	REVISIONS	DATE
NO.	NO.	
BY	DATE	
NO.		
NO.		
NO.		
NO.		
NO.		
NO.		
NO.		



- TREE REMOVAL, ACRES
- TREE REMOVAL (EACH)

REVISIONS	
NAME	DATE

ILLINOIS DEPARTMENT OF TRANSPORTATION
TREE REMOVAL STA 300+00 TO 315+00
 FAP ROUTE 310
 SECTION 60-16-1&1B,42-1&1B
 MADISON/JERSEY COUNTY
 DRAWN BY: EMR CHECKED BY: GLF