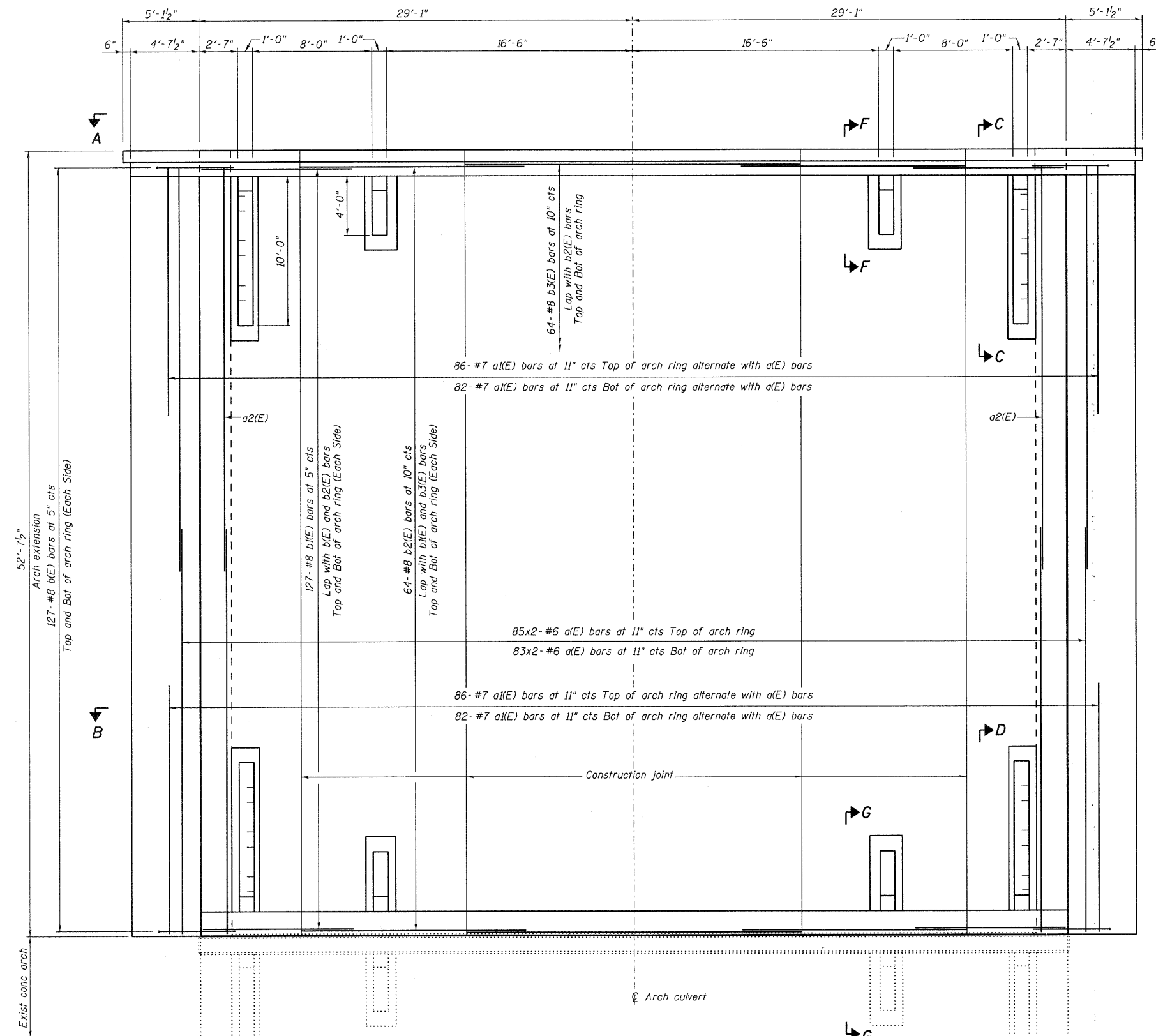


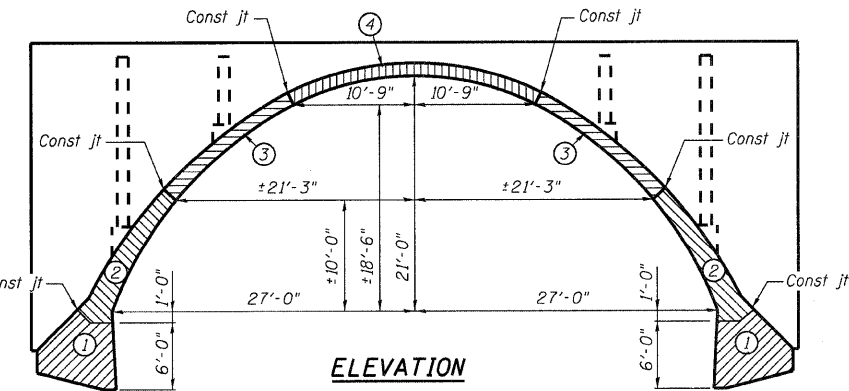
STATE OF ILLINOIS  
DEPARTMENT OF TRANSPORTATION



PLAN

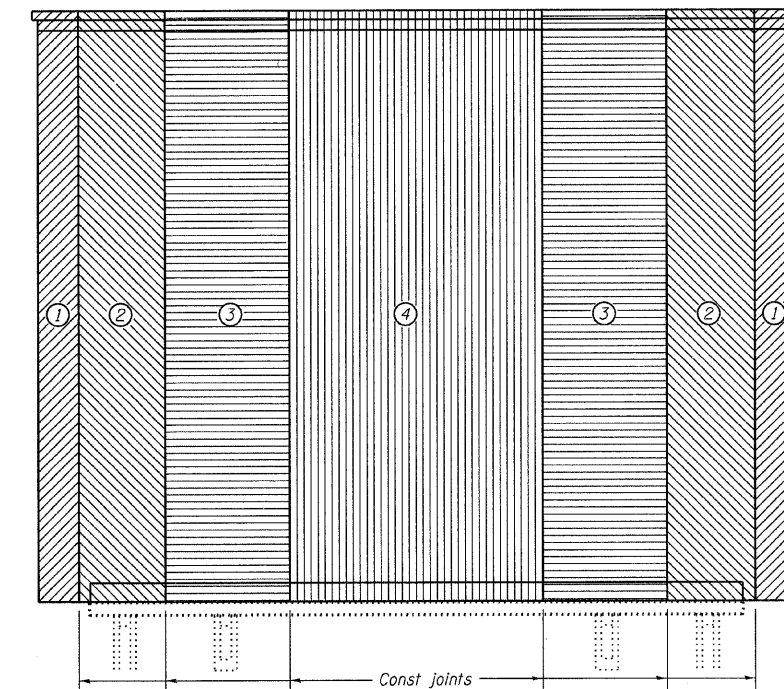
MIN BAR LAP

#6 bars = 2'-10"  
#8 bars = 4'-6" (Pouring Sequence 2)  
#8 bars = 5'-1" (Pouring Sequence 3 & 4)



ELEVATION

The Contractor shall make the rock excavation for footings conform as nearly as possible to the shape of the footings shown



PLAN - SHOWING CONST JOINTS AND POURING SEQUENCE

NOTES:

The Contractor shall place construction joints at locations shown on the plan and shall pour all concrete within the limits of the construction joints in one continuous operation and shall pour the various units in the order shown. Pour both units marked 1 before pouring either unit 2, pour both units marked 2 before pouring either unit 3 etc. The method used to secure a good bond of new concrete to old must be approved by the Engineer.

No falsework shall be removed until all concrete, including headwalls, has attained a minimum modulus of rupture of 650 psi or a minimum compressive strength of 3500 psi, and not less than 14 days from the time all concrete has been poured, including headwalls.

Fill shall be brought up simultaneously on both sides of arch. At no time shall there be a greater difference than 2 ft between the fill heights on opposite sides of arch. Fill behind the cast in place wall within the horizontal limits of the reinforced mass of the MSE wall is to be select fill and placed simultaneously with the MSE wall construction.

The Contractor shall not place construction joints at any location other than those shown, without written permission of the Engineer.

When the pour is stopped for the day at one or more of the transverse Bonded Construction Joints in the Pouring Sequence as shown, the next pour shall not be made until both of the following requirements are met:

1. At least 72 hours shall have elapsed from the end of the previous pour.
2. The concrete strength shall have attained a minimum flexural strength of 650 psi or a minimum compressive strength of 3500 psi.

CONCRETE ARCH DETAILS  
FAP ROUTE 310 (US 67)  
OVER LITTLE PIASA CREEK  
SECTION 60-16-1-1B  
MADISON COUNTY  
STATION 229+95.92  
STRUCTURE NUMBER 060-0061

DESIGNED -	BWP
CHECKED -	CWC
DRAWN -	R KING
CHECKED -	CWC

HOMER L.  
**CHASTAIN**  
& ASSOCIATES, LLP  
CONSULTING ENGINEERS  
DECATUR (217) 422-8544  
CHICAGO (773) 714-0050  
ROCKFORD (815) 489-0050  
184-001397

SHEET NO. 3 OF 12 SHEETS	F.A.P. RTE.	SECTION	COUNTY	TOTAL SHEETS	SHEET NO.
	310	60-16-1-1B	MADISON	481	167
FAP ROUTE 310 (US 67)			CONTRACT NO. 76318		
FED. ROAD DIST. NO.		ILLINOIS	FED. AID PROJECT		