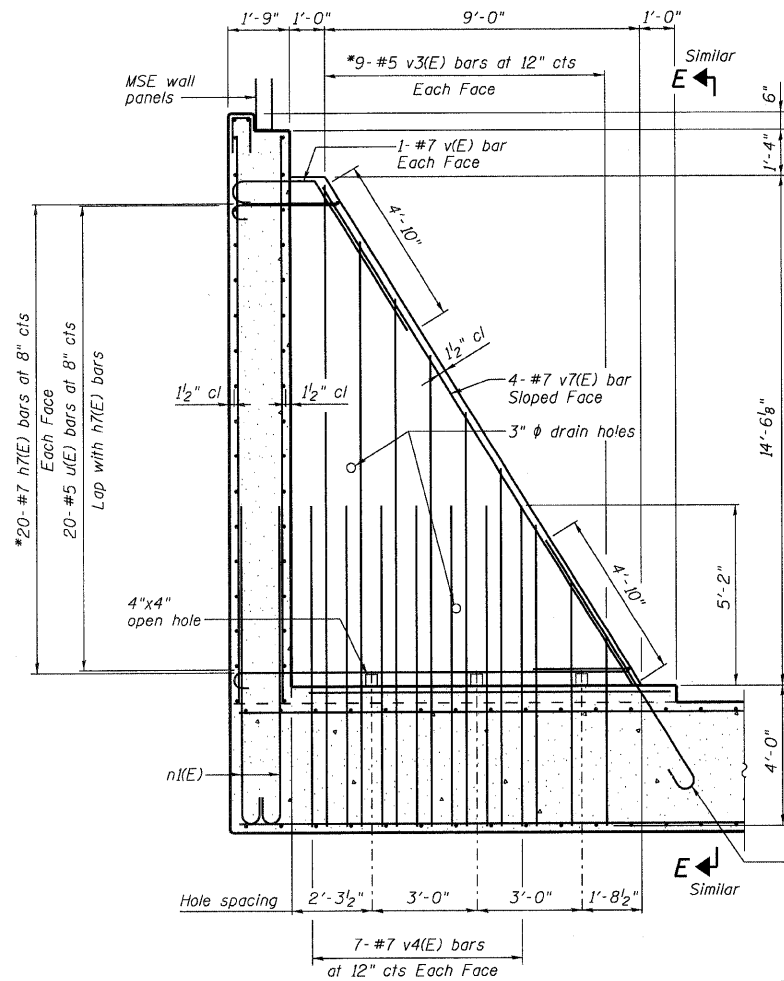
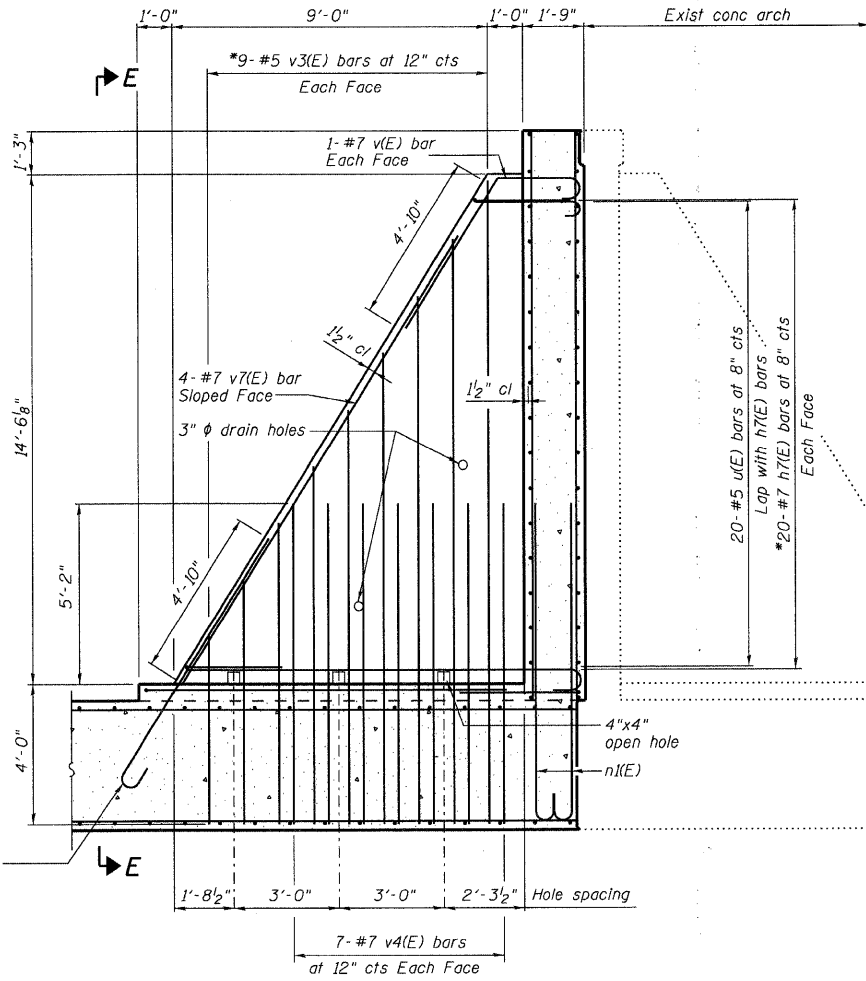


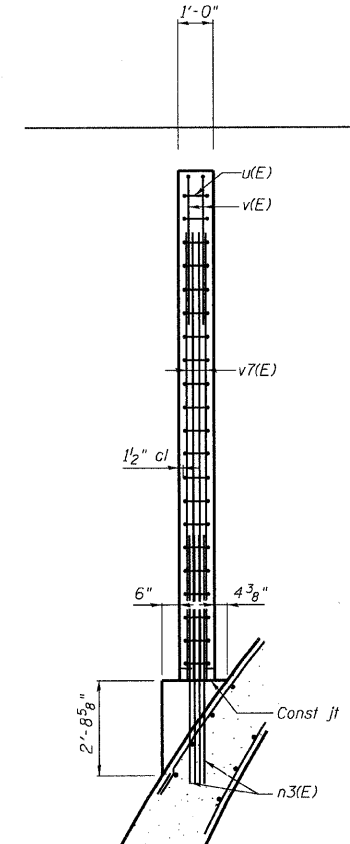
STATE OF ILLINOIS
DEPARTMENT OF TRANSPORTATION



SECTION C-C

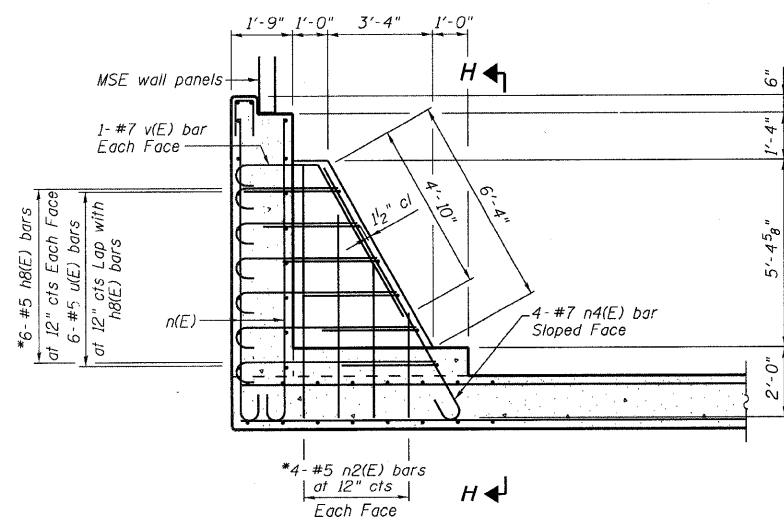


SECTION D-D



SECTION E-E

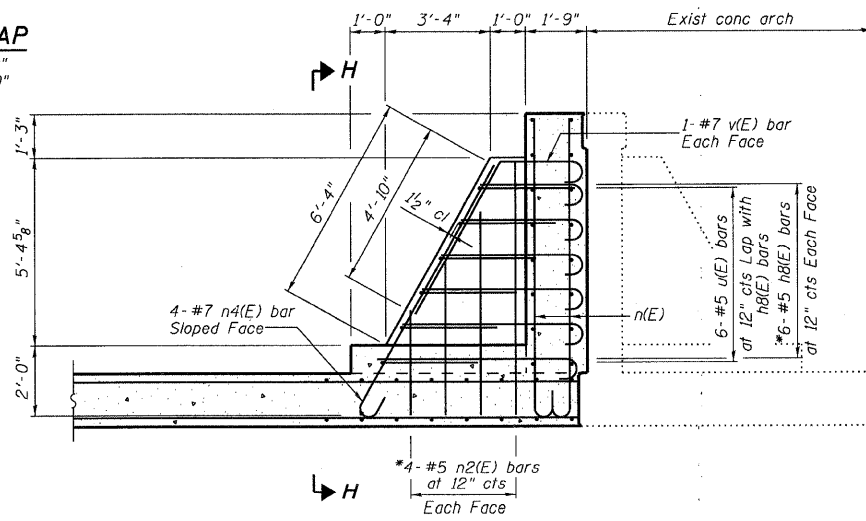
*Order bars full length.
Cut as per Bar Cuffing Diagram
use the remainder in opposite face.
(See Sheet 9 of 12)



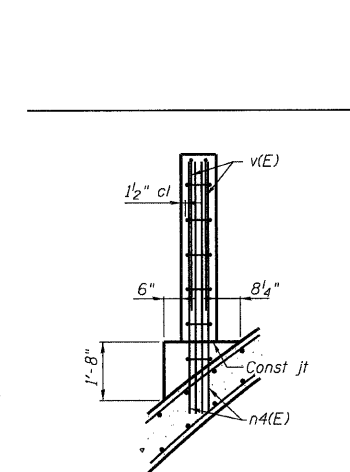
SECTION F-F

MIN BAR LAP

#5 bar = 1'-10"
#7 bar = 4'-10"



SECTION G-G



SECTION H-H

CONCRETE ARCH DETAILS
FAP ROUTE 310 (US 67)
OVER LITTLE PIASA CREEK
SECTION 60-16-1-1B
MADISON COUNTY
STATION 229+95.92
STRUCTURE NUMBER 060-0061

DESIGNED	BWP
CHECKED	CWC
DRAWN	R KING
CHECKED	CWC

HOMER L. CHASTAIN & ASSOCIATES, LLP
CONSULTING ENGINEERS
DECATUR (217) 422-8544
CHICAGO (773) 714-0050
ROCKFORD (815) 489-0050
184-001397

SHEET NO. 8 OF 12 SHEETS	F.A.P. RTE.	SECTION	COUNTY	TOTAL SHEETS	SHEET NO.
	310	60-16-1-1B	MADISON	481	172
FAP ROUTE 310 (US 67)			CONTRACT NO. 76318		
FED. ROAD DIST. NO.		ILLINOIS FED. AID PROJECT			