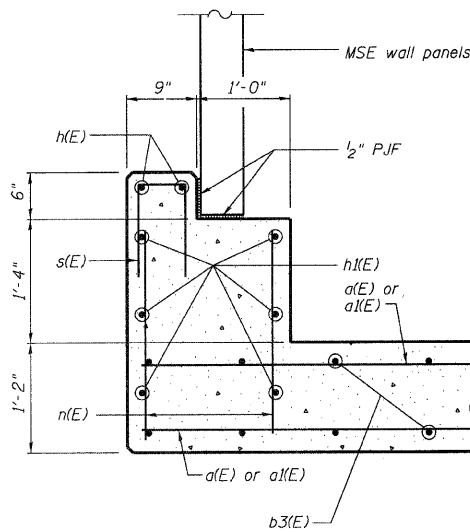
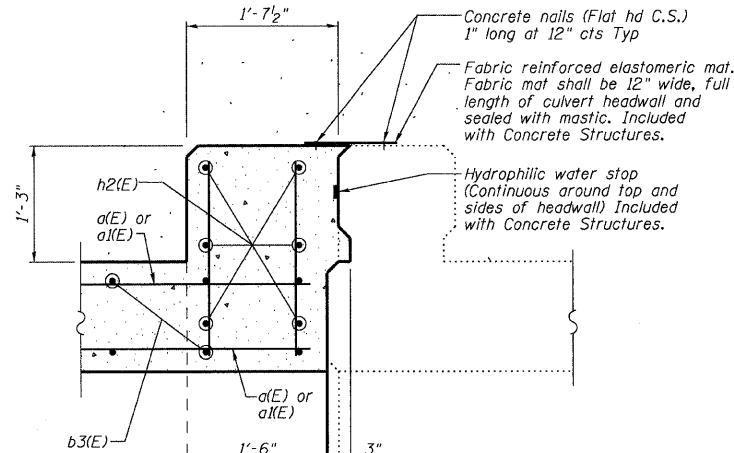


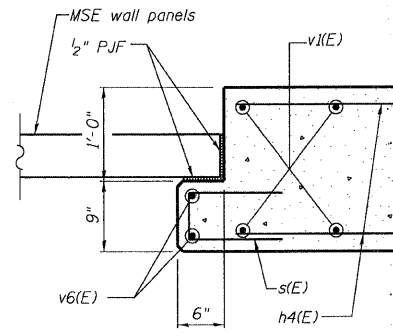
STATE OF ILLINOIS
DEPARTMENT OF TRANSPORTATION



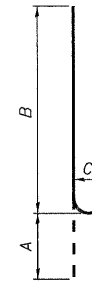
DETAIL "J"



DETAIL "K"

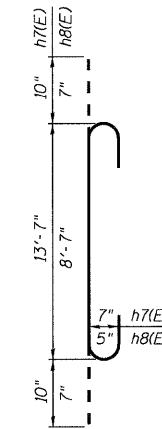


SECTION L-L

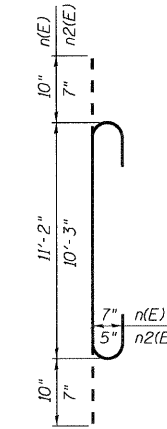


| Bar | A | B | C |
|-------|-----|--------|----|
| b(E) | 11" | 11'-6" | 8" |
| n1(E) | 10" | 9'-0" | 7" |
| n3(E) | 10" | 9'-6" | 7" |
| n4(E) | 10" | 8'-3" | 7" |

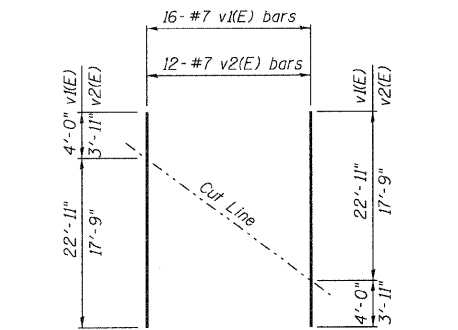
BARS b(E), n1(E), n3(E) & n4(E)



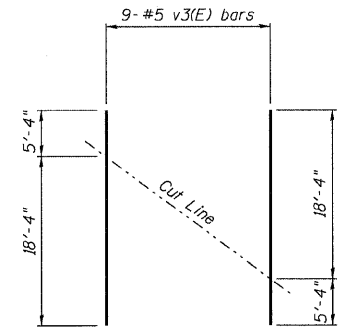
BARS h7(E) & h8(E)



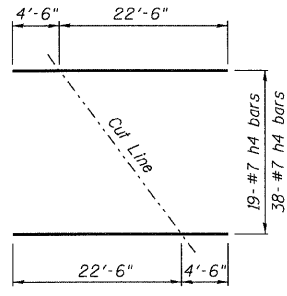
BARS n(E) & n2(E)



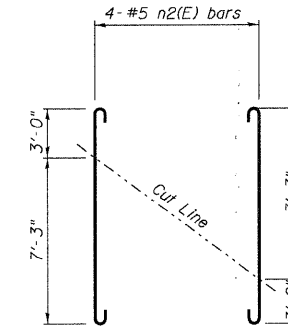
BARS v1(E) & v2(E) CUTTING DIAGRAM



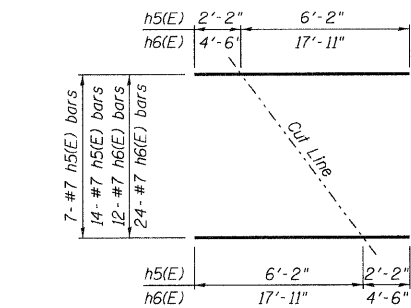
BARS v3(E) CUTTING DIAGRAM



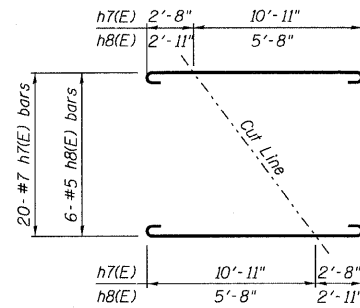
BAR h4(E) CUTTING DIAGRAM



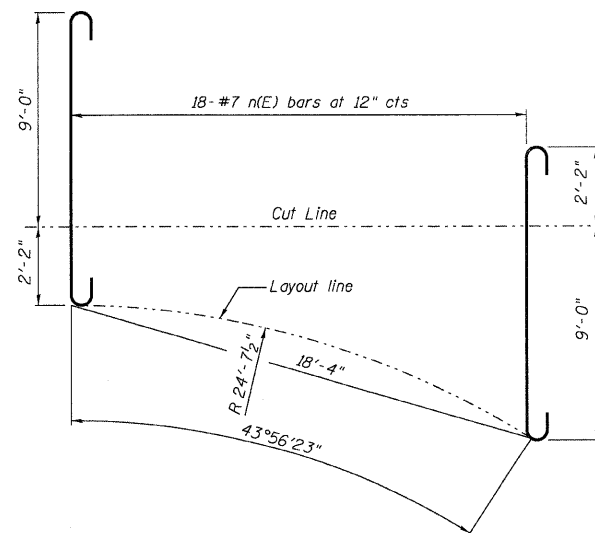
BAR n2(E) CUTTING DIAGRAM



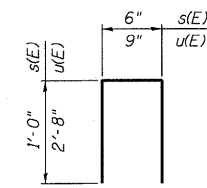
BARS h5(E) & h6(E) CUTTING DIAGRAM



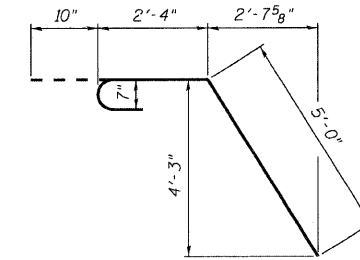
BARS h7(E) & h8(E) CUTTING DIAGRAM



BAR n(E) CUTTING DIAGRAM



BARS s(E) & u(E)



BAR v(E)

BILL OF MATERIAL

| Bar | No. | Size | Length | Shape |
|----------------------------------|-----|-------|---------|-------|
| a1(E) | 384 | #6 | 27'-7" | — |
| a1(E) | 336 | #7 | 16'-8" | — |
| a2(E) | 28 | #4 | 27'-1" | — |
| b(E) | 508 | #8 | 12'-5" | — |
| b1(E) | 508 | #8 | 15'-4" | — |
| b2(E) | 256 | #8 | 18'-0" | — |
| b3(E) | 128 | #8 | 23'-2" | — |
| h(E) | 4 | #4 | 34'-9" | — |
| h1(E) | 12 | #7 | 35'-9" | — |
| h2(E) | 12 | #7 | 30'-8" | — |
| h3(E) | 200 | #7 | 6'-6" | — |
| h4(E) | 57 | #7 | 27'-0" | — |
| h5(E) | 21 | #7 | 8'-4" | — |
| h6(E) | 36 | #7 | 22'-5" | — |
| h7(E) | 40 | #7 | 15'-3" | — |
| h8(E) | 12 | #5 | 9'-9" | — |
| n(E) | 72 | #7 | 12'-10" | — |
| n1(E) | 168 | #7 | 9'-10" | — |
| n2(E) | 8 | #5 | 11'-5" | — |
| n3(E) | 8 | #7 | 10'-4" | — |
| n4(E) | 8 | #7 | 9'-1" | — |
| s(E) | 125 | #4 | 2'-6" | — |
| u(E) | 104 | #5 | 6'-1" | — |
| v(E) | 16 | #7 | 8'-2" | — |
| v1(E) | 32 | #7 | 26'-11" | — |
| v2(E) | 24 | #7 | 21'-8" | — |
| v3(E) | 36 | #5 | 23'-8" | — |
| v4(E) | 56 | #7 | 9'-2" | — |
| v5(E) | 28 | #4 | 9'-0" | — |
| v6(E) | 4 | #4 | 27'-3" | — |
| v7(E) | 8 | #7 | 16'-6" | — |
| Concrete Structures | | Cu Yd | 453.0 | |
| Reinforcement Bars, Epoxy Coated | | Pound | 108,710 | |

Reinforcement bars bars designated (E) shall be epoxy coated.

**CONCRETE ARCH DETAILS
FAP ROUTE 310 (US 67)
OVER LITTLE PIASA CREEK
SECTION 60-16-1-1B
MADISON COUNTY
STATION 229+95.92
STRUCTURE NUMBER 060-0061**

| | |
|------------|--------|
| DESIGNED - | BWP |
| CHECKED - | CWC |
| DRAWN - | R KING |
| CHECKED - | CWC |

HOMER L. CHASTAIN & ASSOCIATES, LLP
CONSULTING ENGINEERS

DECATUR (217) 422-8544
CHICAGO (773) 714-0050
ROCKFORD (815) 489-0050

184-001597

| | | | | | |
|-----------------------------|-------------|---------------------------|---------|--------------|-----------|
| SHEET NO. 9 OF 12 SHEETS | F.A.P. RTE. | SECTION | COUNTY | TOTAL SHEETS | SHEET NO. |
| | 310 | 60-16-1-1B | MADISON | 481 | 173 |
| FAP ROUTE 310 (US 67) | | CONTRACT NO. 76318 | | | |
| FED. ROAD DIST. NO. | | ILLINOIS FED. AID PROJECT | | | |