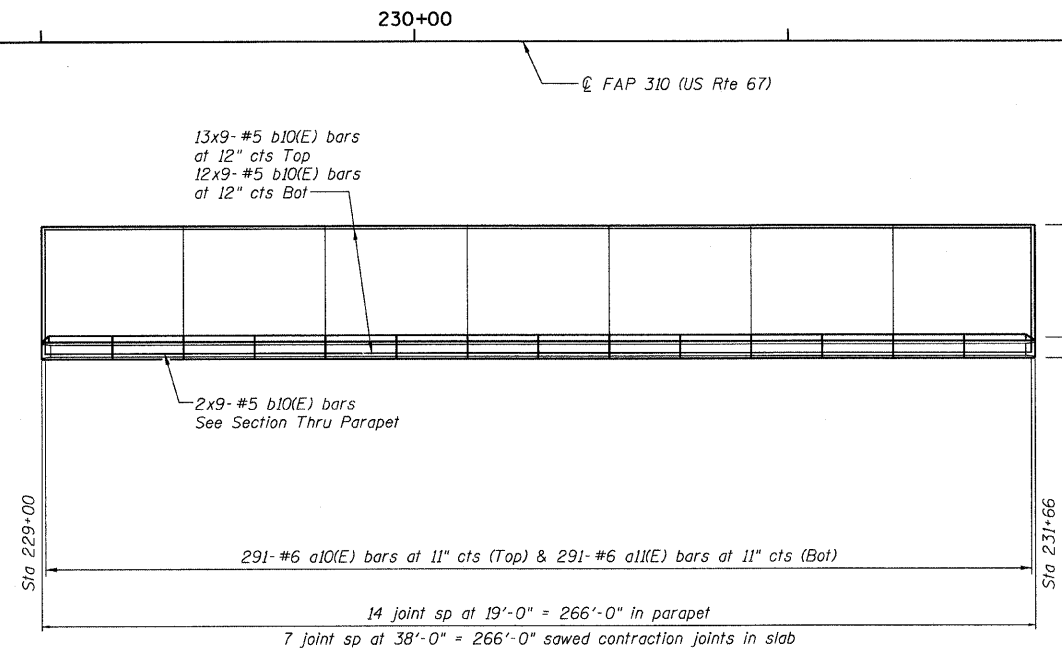
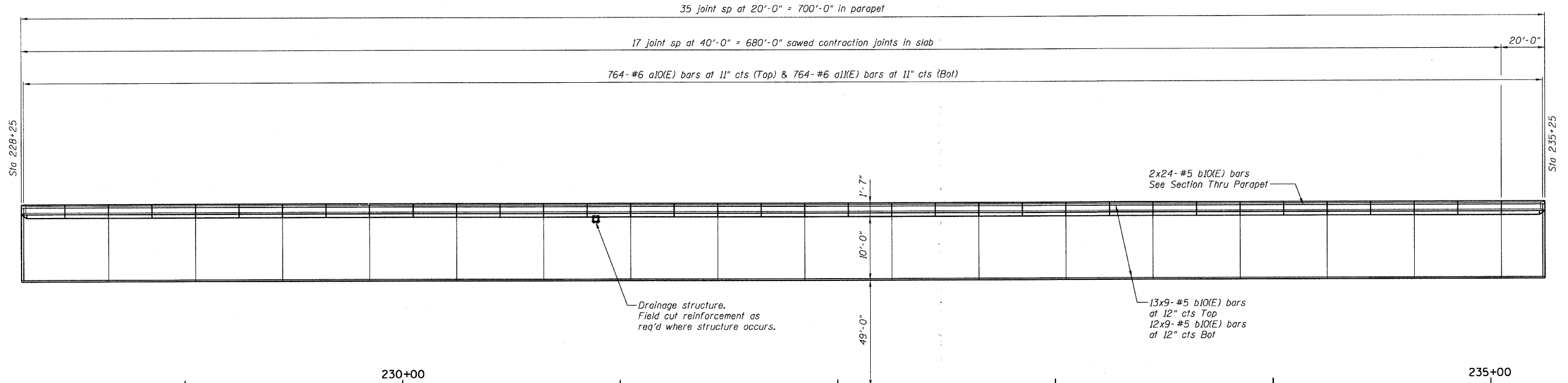
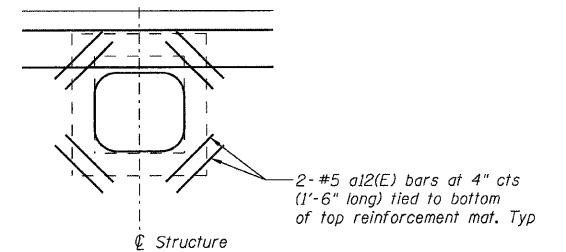


STATE OF ILLINOIS
DEPARTMENT OF TRANSPORTATION



ANCHORAGE SLAB PLAN VIEW

MIN BAR LAP
#5 bar = 2'-2"



DETAIL AT DRAINAGE STRUCTURE

ANCHORAGE SLAB DETAILS
FAP ROUTE 310 (US 67)
OVER LITTLE PIASA CREEK
SECTION 60-16-1-1B
MADISON COUNTY
STATION 229+95.92
STRUCTURE NUMBER 060-W005

DESIGNED	BWP
CHECKED	CWC
DRAWN	R KING
CHECKED	CWC

HOMER L. CHASTAIN & ASSOCIATES, LLP
CONSULTING ENGINEERS
DECATUR (217) 422-8544
CHICAGO (773) 714-0050
ROCKFORD (815) 489-0050
184-001397

SHEET NO.	F.A.P. RTE.	SECTION	COUNTY	TOTAL SHEETS	SHEET NO.
3	310	60-16-1-1B	MADISON	481	179
OF 8 SHEETS		FAP ROUTE 310 (US 67)		CONTRACT NO. 76318	
FED. ROAD DIST. NO. ILLINOIS FED. AID PROJECT					