

Notes: Reinforcement bars in diaphragm are billed with superstructure on sheet 6 of 35.

Concrete in diaphragm is included with Concrete superstructure on sheet 6 of 35.

Equivalent rolled angle with stiffeners will be allowed in lieu of welded plates.

All side retainers shall be galvanized after shop fabrication according to AASHTO M 111.

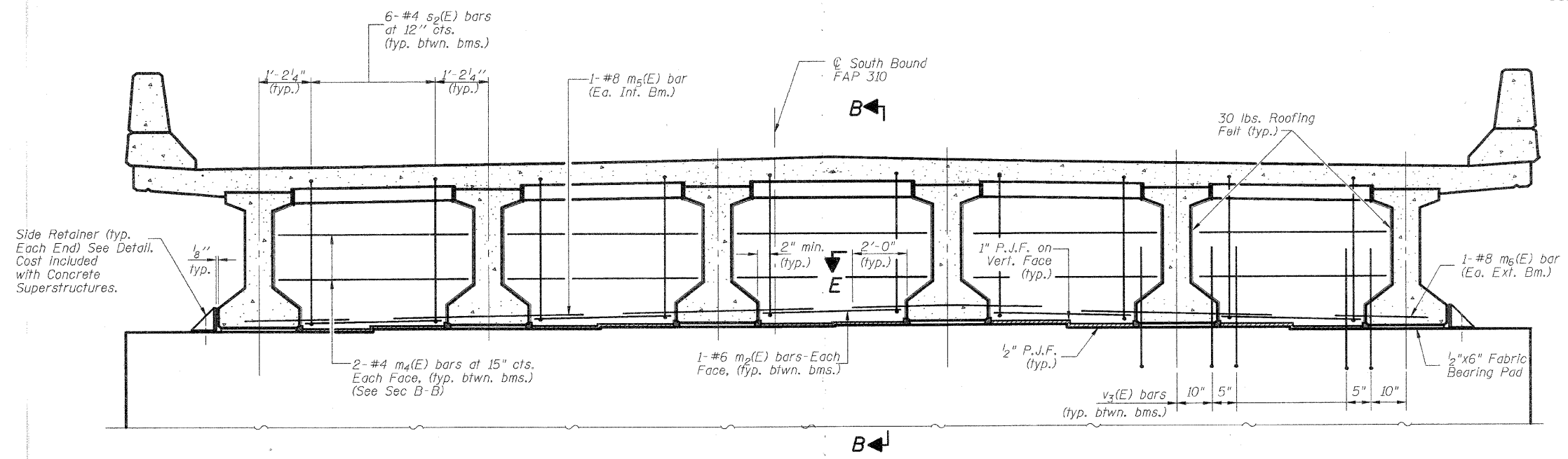
Anchor bolt assemblies shall be galvanized according to Article 1006.09 of the Standard Specifications.

Anchor bolts shall be ASTM F1554 all-thread (or an Engineer-approved alternate material) of the grade(s) and diameter(s) specified. ASTM A307 Grade C anchor bolts may be used in lieu of ASTM F1554 Grade 36 (Fy=36ksi). The corresponding specified grade of AASHTO M314 anchor bolts may be used in lieu of ASTM F1554.

Anchor bolts for side retainers may be either cast in place or installed in holes drilled after the supporting member is in place and prior to pouring the deck.

Drilled and set anchor bolts shall be installed according to Article 521.06 of the Standard Specifications.

Cost of side retainer and anchor bolts shall be included with Concrete Structures.



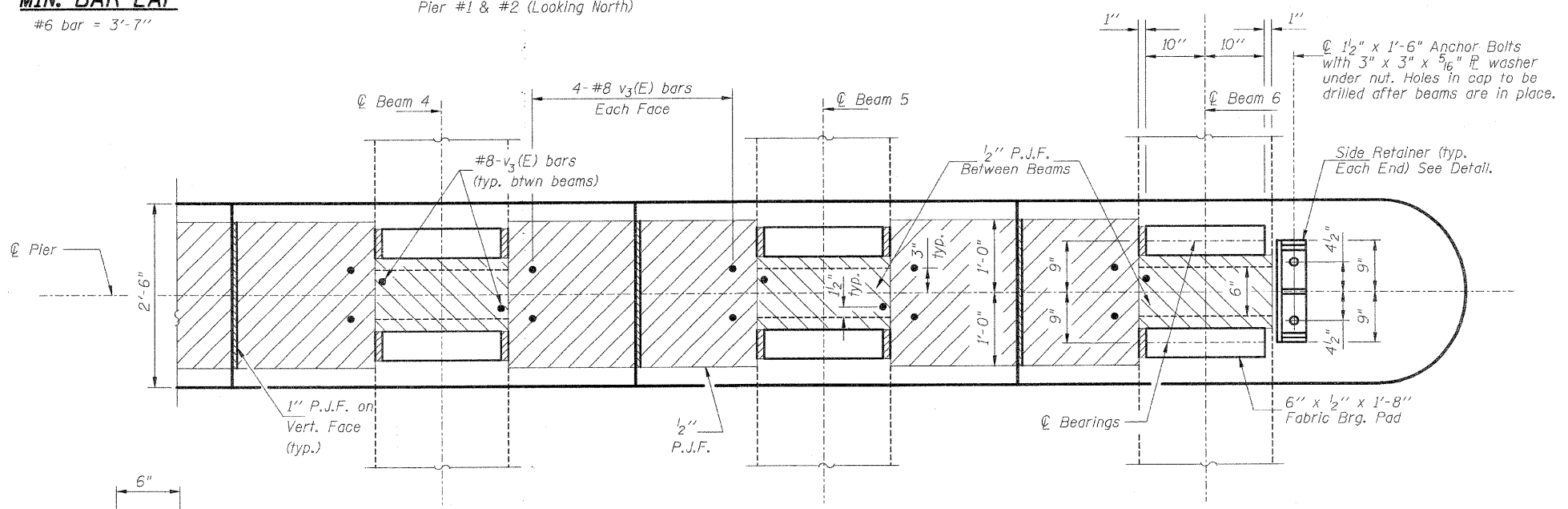
MIN. BAR LAP
 #6 bar = 3'-7"

PIER DIAPHRAGM ELEVATION
 Pier #1 & #2 (Looking North)

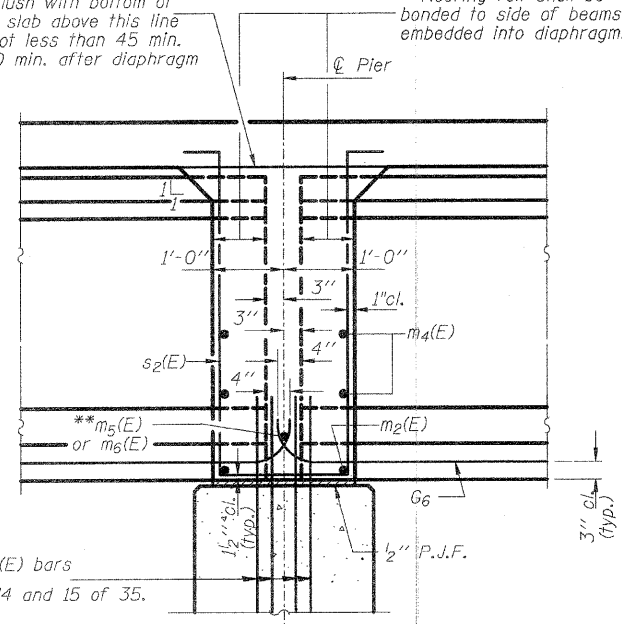
* Cost of Roofing felt is included with Concrete Superstructure.
 ** Tightly fasten the #8 bars together with No. 9 wire

Pour diaphragm flush with bottom of slab. Concrete in slab above this line shall be placed not less than 45 min. nor more than 90 min. after diaphragm has been poured.

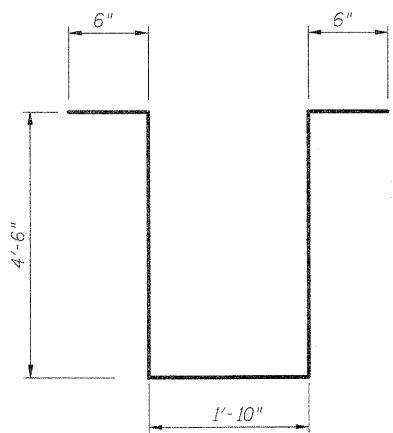
* Roofing felt shall be banded to side of beams embedded into diaphragm.



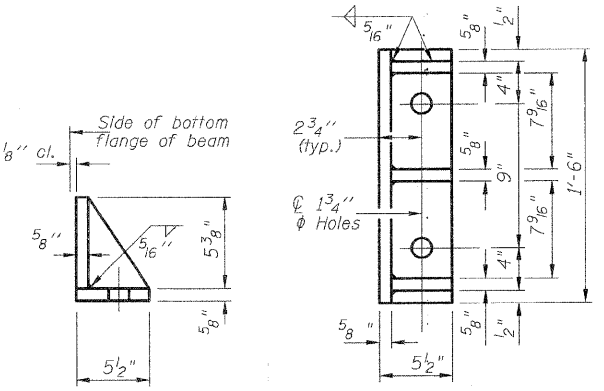
PARTIAL PLAN AT PIER CAP SECTION E-E



SECTION B-B AT PIERS



BAR s2(E)



SIDE RETAINER

DESIGNED	R.K.M.
CHECKED	M.E.B.
DRAWN	P.W.S.
CHECKED	M.E.B.-R.K.M.

PIER DIAPHRAGM DETAILS
 SOUTHBOUND LANES
 FAP-310
 SECTION 61-16-1, 42-1
 JERSEY COUNTY
 STATION 318+48.66
 STRUCTURE NUMBER 042-0026 (S.B.)

HR
 HURST-ROSCHE ENGINEERS, INC.
 601 NORTH BRUNS LANE
 SPRINGFIELD, IL 62702
 (217)-787-1199
 FAX (217)-793-1199