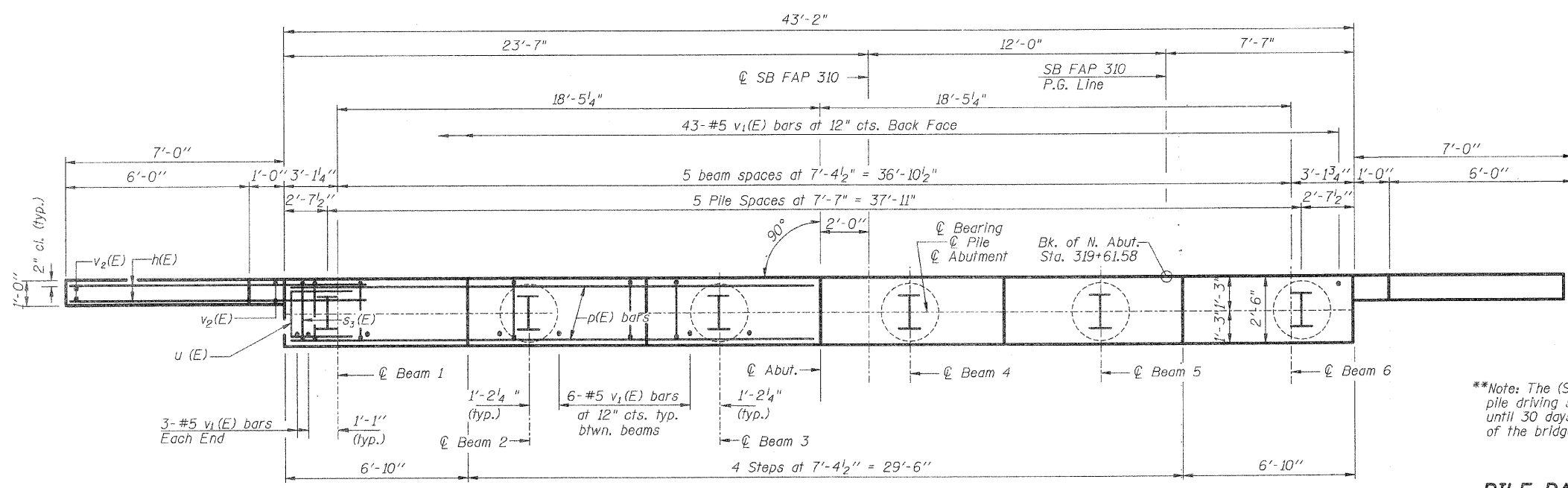
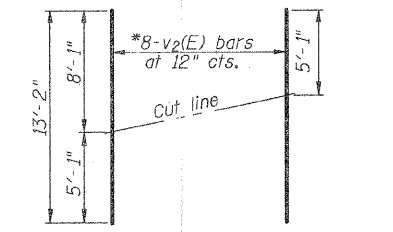


SEC. THRU ABUT.

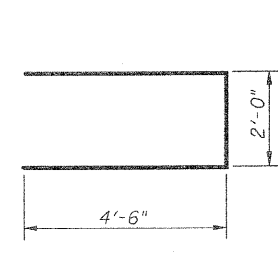


PLAN

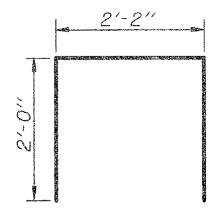


FIELD CUTTING DIAGRAM

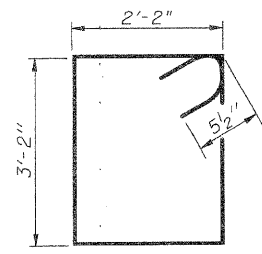
* Order v2(E) bars full length. Cut to fit and use the remainder of bars in opposite face.



BAR u(E)



BAR s3(E)



BAR s3(E)

**Note: The (SB) S. & N. Abut. pile driving shall be delayed until 30 days after completion of the bridge cones.

PILE DATA **

Type: Steel HP 12x53 w/ pile shoes
 Allowable Resistance Available: 139 kips
 Nominal Required Bearing: 419 kips
 Estimated Length: 29'
 No. Required: 5 plus 1 Test Pile

Notes: Pour steps monolithically with cgp. All Edges shall have standard 3/4" Chamfers except as Noted.

BILL OF MATERIAL

Bar	No.	Size	Length	Shape
h(E)	40	#5	10'-0"	—
p(E)	10	#7	42'-10"	—
p2(E)	2	#5	7'-0"	—
s3(E)	41	#5	11'-7"	□
s3(E)	8	#5	6'-2"	□
u(E)	8	#6	11'-0"	□
v1(E)	79	#5	4'-4"	—
v2(E)	16	#5	13'-2"	—
Furnishing Steel Piles		HP 12x53	Foot	145
Driving Piles			Foot	145
Pile Shoes			Each	6
Test Pile Steel		HP12x53	Each	1
Concrete Structures			Cu. Yd.	18.4
Reinforcement Bars, Epoxy Coated			Pound	2570
Structure Excavation			Cu. Yd.	95.0
Concrete Encasement			Cu. Yd.	2.1

**NORTH ABUTMENT
 SOUTHBOUND LANES
 FAP-310
 SECTION 60-16-1, 42-1
 JERSEY COUNTY
 STATION 318+48.66
 STRUCTURE NO. 042-0026 (S.B.)**

HR
 HURST-ROSCHIE ENGINEERS, INC.
 601 NORTH BRUNS LANE
 SPRINGFIELD, IL 62702
 (217)-787-1199
 FAX (217)-793-1199

DESIGNED	M.E.B.
CHECKED	R.K.M.
DRAWN	P.W.S.
CHECKED	M.E.B.-R.K.M.