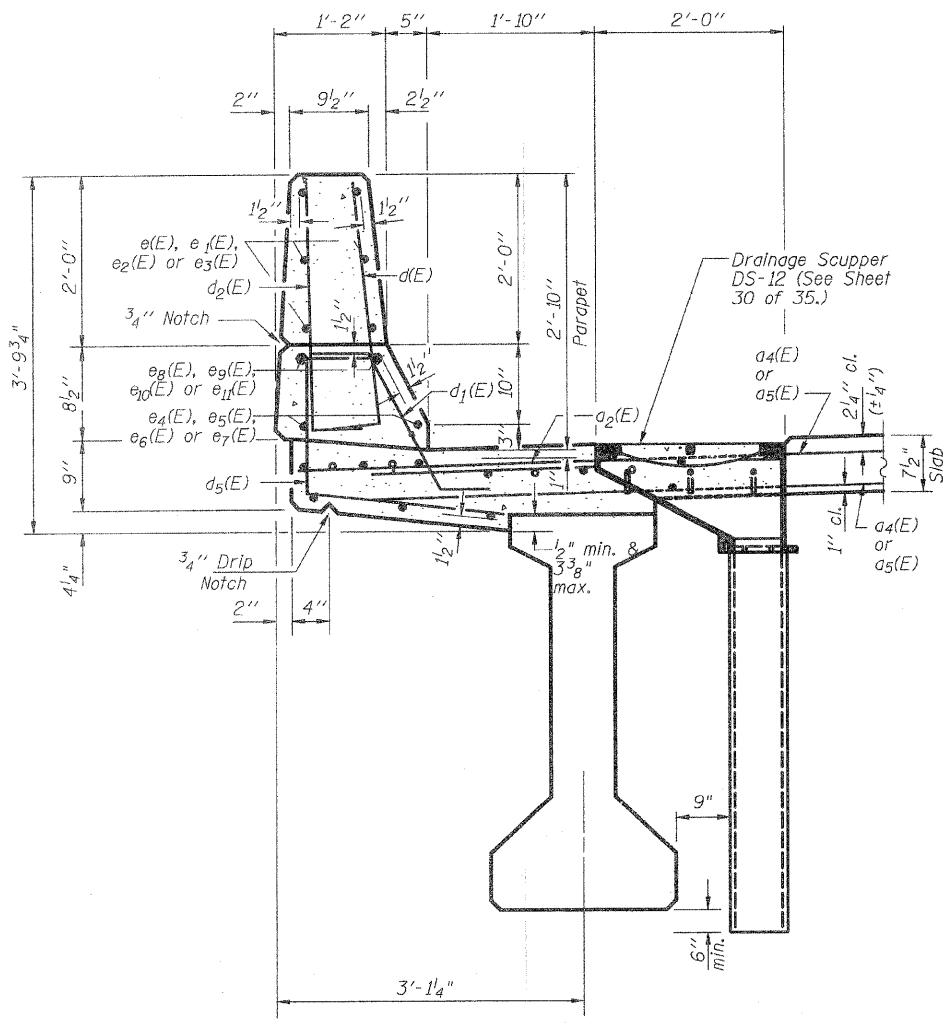
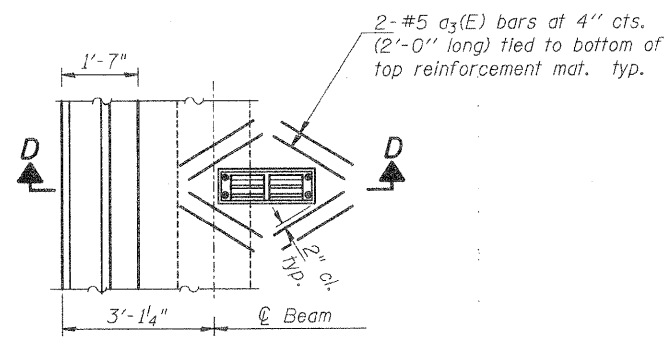


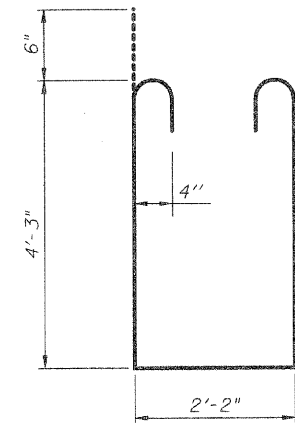
ABUTMENT DIAPHRAGM ELEVATION
 North Abutment (Looking North)
 (South Abutment similar by rotation of 180°)



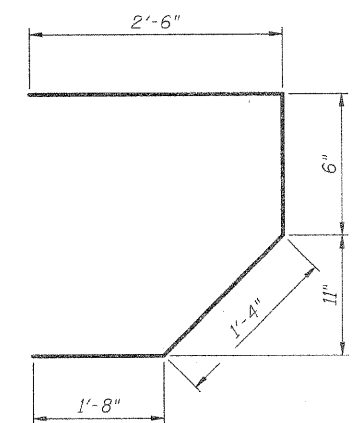
SECTION THRU PARAPET SECTION D-D



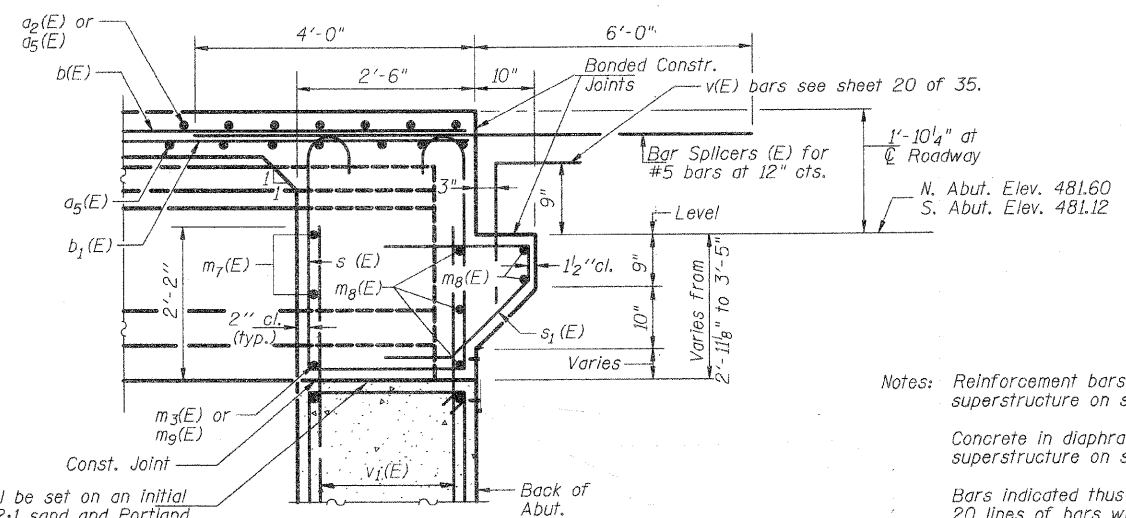
TOP PLAN
 Cut longitudinal reinforcement in field to clear drainage scuppers.



BAR s(E)



BAR s1(E)



SECTION A-A

Beam ends shall be set on an initial 1/2" Min. grout (2:1 sand and Portland Cement, very dry mix) to provide full bearing. Any excess grout squeezed out from under the beam shall be removed. Cost incidental to Concrete Structures.

Notes: Reinforcement bars in diaphragm are billed with superstructure on sheet 20 of 35.
 Concrete in diaphragm is included with Concrete superstructure on sheet 20 of 35.
 Bars indicated thus 20 x 3-#5 etc. Indicates 20 lines of bars with 3 lengths per line.

MIN. BAR LAP
 #6 bar = 3'-7"

**ABUTMENT DIAPHRAGM DETAILS
 NORTHBOUND LANES
 FAP-310
 SECTION 60-16-1, 42-1
 JERSEY COUNTY
 STATION 318+48.66
 STRUCTURE NUMBER 042-0027 (N.B.)**

DESIGNED	M.E.B.
CHECKED	R.K.M.
DRAWN	P.W.S.
CHECKED	M.E.B.-R.K.M.