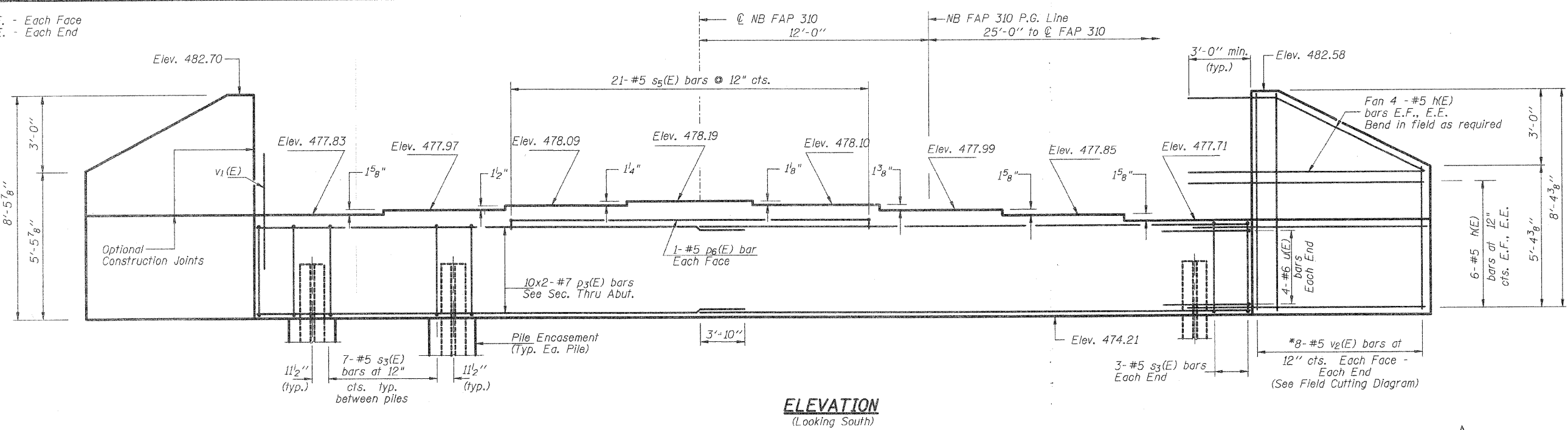


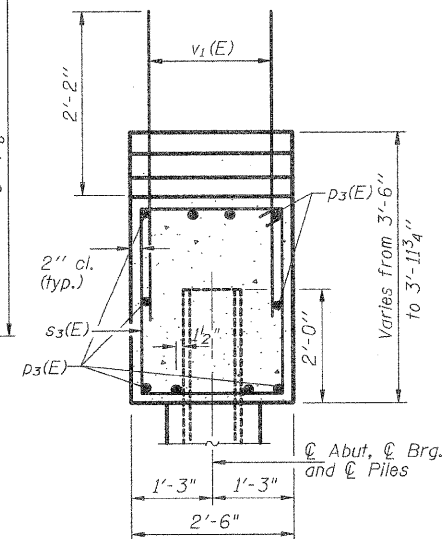
E.F. - Each Face
E.E. - Each End

RTE.	SECTION	COUNTY	SHEETS	NO.
310	60-16-1, 42-1	JERSEY	481	210
STA.	TO STA.			
FED. ROAD DIST. NO.	ILLINOIS FED. AID PROJECT			

Sheet 26 of 35 Sheets
CONTRACT NO. 76318



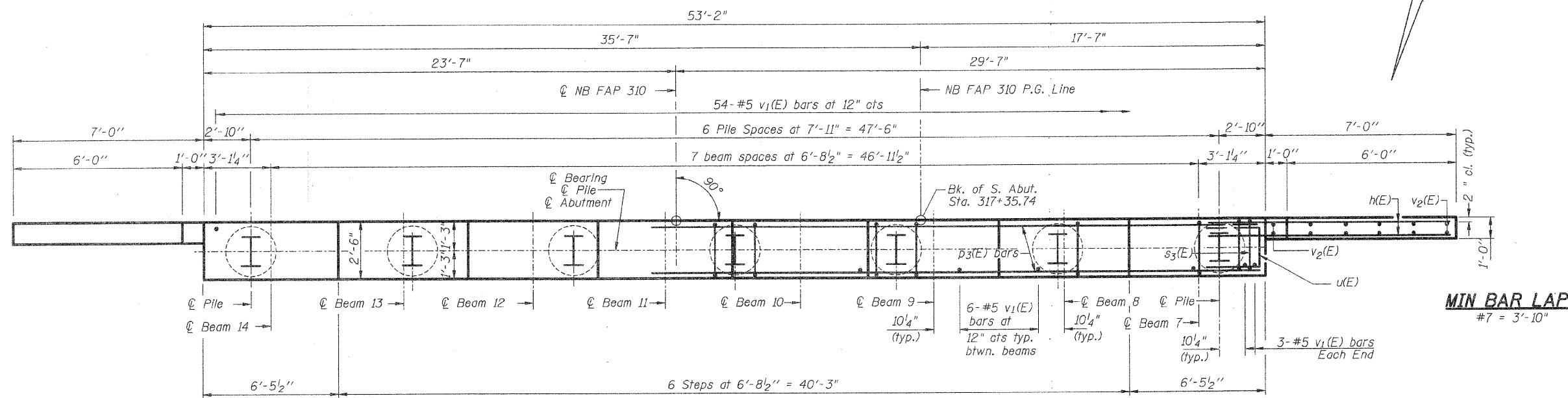
ELEVATION
(Looking South)



SEC. THRU ABUT.

BILL OF MATERIAL

Bar	No.	Size	Length	Shape
h(E)	40	#5	10'-0"	—
p3(E)	20	#7	28'-6"	—
p6(E)	2	#5	19'-9"	—
s3(E)	48	#5	11'-7"	□
s5(E)	21	#5	6'-2"	□
u(E)	8	#6	11'-0"	—
v1(E)	102	#5	4'-4"	—
v2(E)	16	#5	13'-2"	—
Furnishing Steel Piles		Foot	266	
HP 12x53		Foot	266	
Driving Piles		Each	7	
Pile Shoes		Cu. Yd.	22.2	
Concrete Structures		Pound	3160	
Reinforcement Bars, Epoxy Coated		Cu. Yd.	115.0	
Structure Excavation		Cu. Yd.	2.4	
Concrete Encasement				

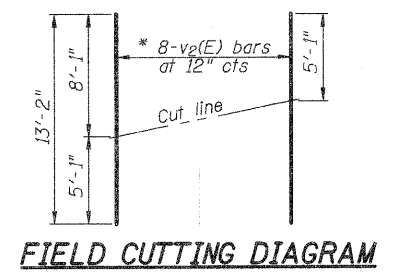


PLAN

PILE DATA

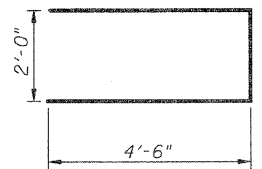
Type: Steel HP 12x53 with pile shoes.
Allowable Resistance Available: 139 kips
Nominal Required Bearing: 419 kips
Estimated Length: 38'
No. Required: 7

Notes:
Pour steps monolithically with cap.
All Edges shall have standard 3/4" Chamfers except as Noted.
Bars indicated thus 20 x 3-#5 etc. indicates 20 lines of bars with 3 lengths per line.

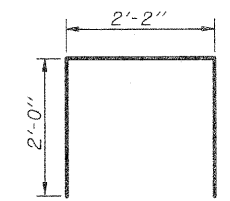


FIELD CUTTING DIAGRAM

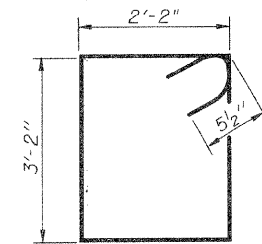
* Order v2(E) bars full length.
Cut to fit and use the remainder of bars in opposite face.



BAR u(E)



BAR s5(E)



BAR s3(E)

DESIGNED	M.E.B.
CHECKED	R.K.M.
DRAWN	P.W.S.
CHECKED	M.E.B.-R.K.M.

**SOUTH ABUTMENT
NORTHBOUND LANES
FAP-310
SECTION 60-16-1, 42-1
JERSEY COUNTY
STATION 318+48.66
STRUCTURE NO. 042-0027 (N.B.)**

HR
HURST-ROSCHKE ENGINEERS, INC.
601 NORTH BRUNS LANE
SPRINGFIELD, IL 62702
(217)-787-1199
FAX (217)-793-1199