

Notes:

Space reinforcement in cap to miss anchor bolts.  
 Four steps monolithically with cap.  
 All exposed edges shall have standard 3/4" chamfers.  
 If a portion of the pier wall or concrete encasement is under water, reinforcement may be placed underwater into forms. Concrete shall be tremied according to Article 503.08 of the Standard Specifications to an elevation of 1'-0" above the water line at the time of construction

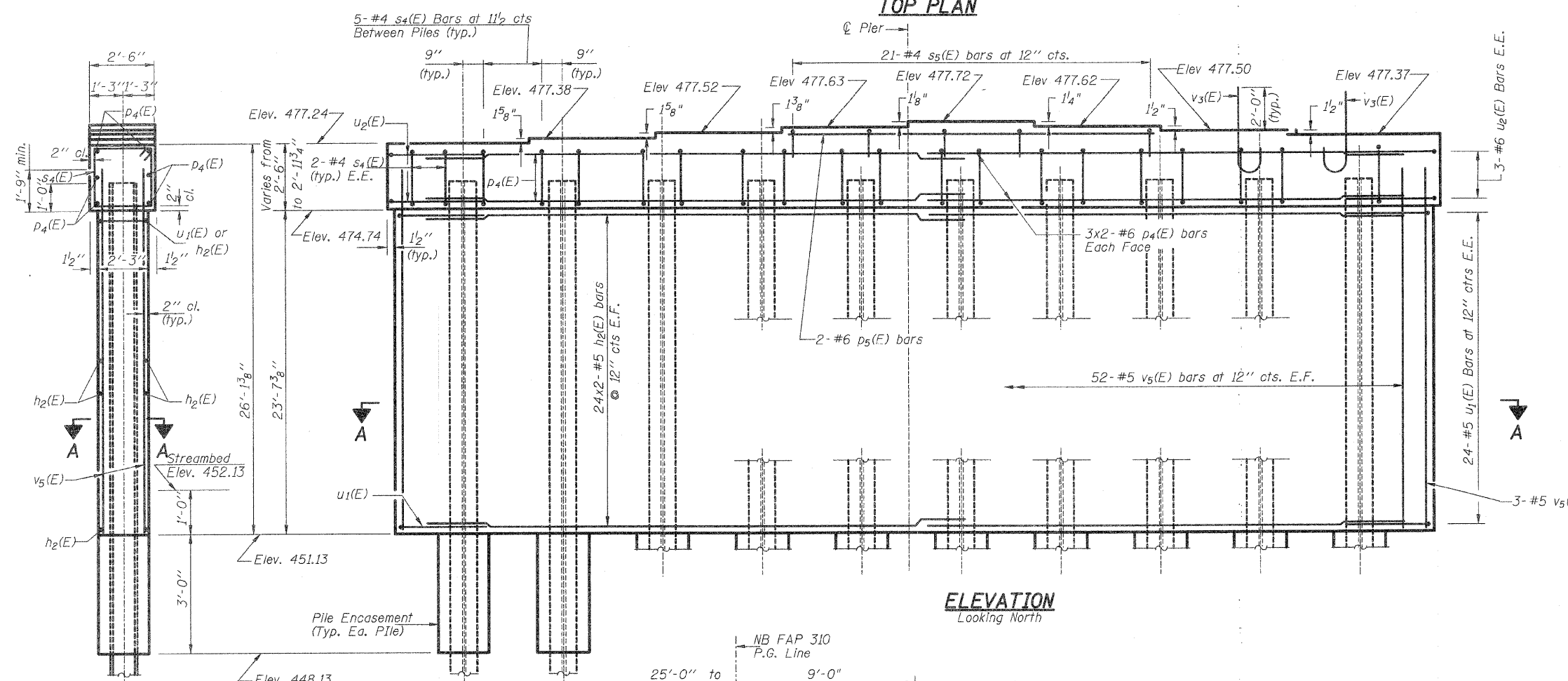
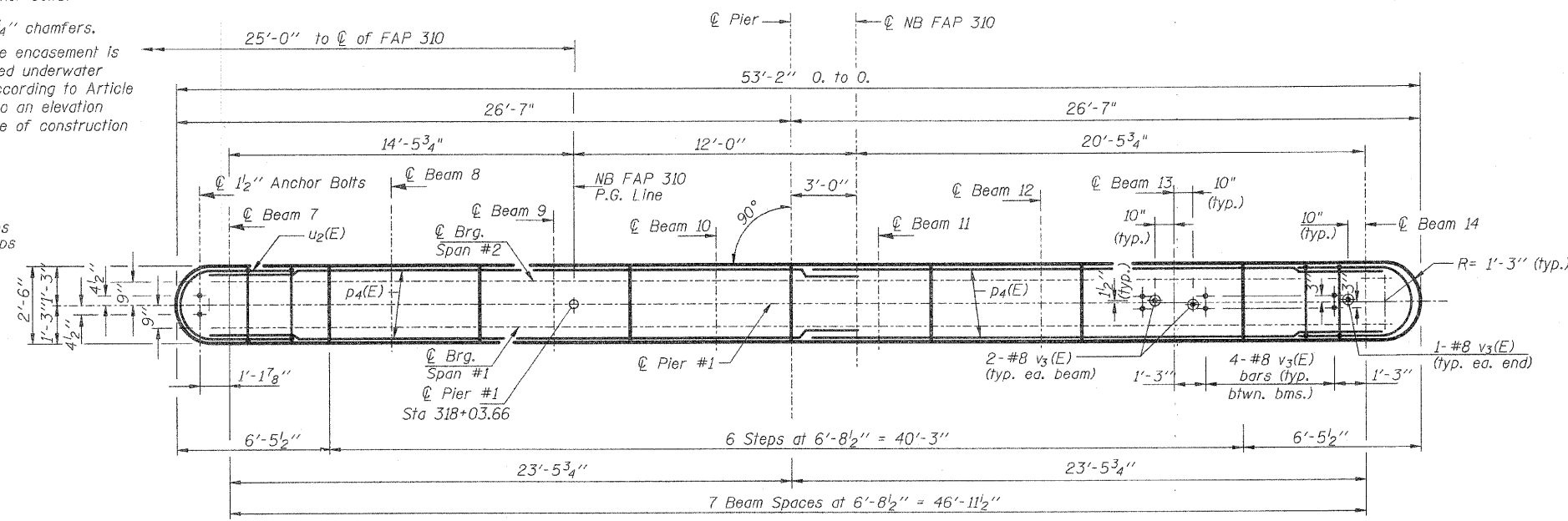
E.F. - Each Face  
 E.E. - Each End

**PILE DATA**

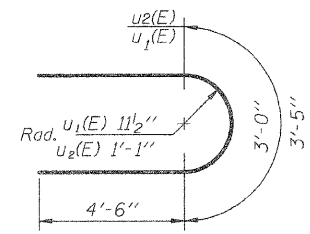
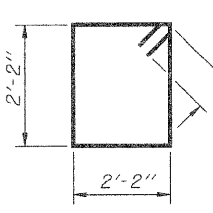
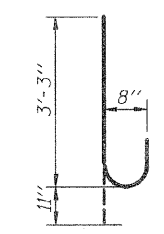
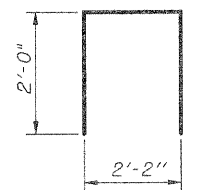
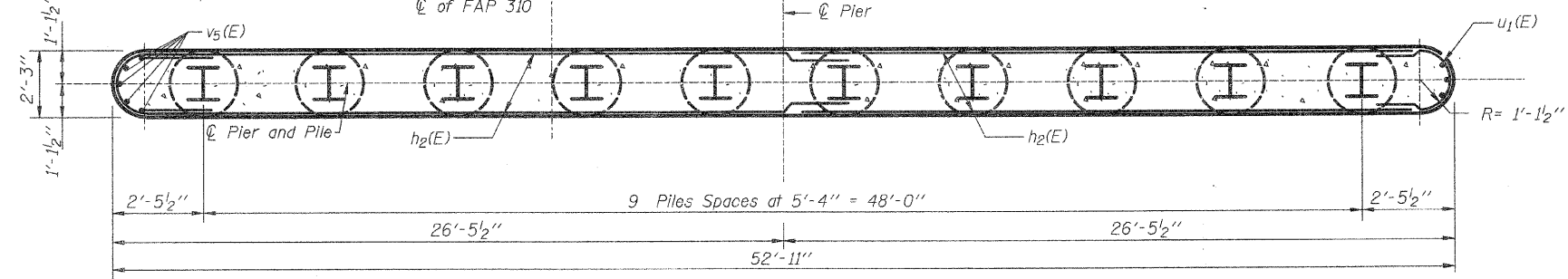
Type: Steel HP 14x89 w/ pile shoes  
 Allowable Resistance Available: 235 kips  
 Nominal Required Bearing: 705 kips  
 Est. Length: 42'  
 No. Req'd: 10

F.A.P. RTE.	SECTION	COUNTY	TOTAL SHEETS	SHEET NO.
310	60-16-1, 42-1	JERSEY	481	212
STA.		TO STA.		
FED. ROAD DIST. NO.		ILLINOIS FED. AID PROJECT		

Sheet 28 of 35 Sheets  
**CONTRACT NO. 76318**



**END VIEW**



**BILL OF MATERIAL**

Bar	No.	Size	Length	Shape
h2(E)	96	#5	26'-10"	—
p4(E)	12	#6	27'-2"	—
p5(E)	2	#6	19'-10"	—
s4(E)	49	#4	9'-5"	□
s5(E)	21	#4	6'-2"	□
u1(E)	48	#5	12'-0"	U
u2(E)	6	#6	12'-5"	U
v3(E)	42	#8	4'-2"	J
v5(E)	110	#5	25'-5"	—
Concrete Structures		Cu. Yd.	116.6	
Reinforcement Bars, Epoxy Coated		Pound	7730	
Furnishing Steel Piles HP14x89		Foot	420	
Driving Piles		Foot	420	
Pile Shoes		Each	10	
Underwater Struc Excav. Protection, Loc. No. 1		Each	1	
Structure Excavation		Cu. Yd.	143.5	
Concrete Encasement		Cu. Yd.	5.5	

**Min. Bar Lap**  
 #5 - 3'-0"  
 #6 - 3'-7"

DESIGNED	M.E.B.
CHECKED	R.K.M.
DRAWN	P.W.S.
CHECKED	M.E.B.-R.K.M.

**PIER # 1**  
**NORTHBOUND LANES**  
**FAP-310**  
**SECTION 60-16-1, 42-1**  
**JERSEY COUNTY**  
**STATION 318+48.66**  
**STRUCTURE NO. 042-0027 (N.B.)**

**HR**  
 HURST - ROSCHE ENGINEERS, INC.  
 601 NORTH BRUNS LANE  
 SPRINGFIELD, IL 62702  
 (217)-787-1199  
 FAX (217)-793-1199