

Notes:

Space reinforcement in cap to miss anchor bolts.
 Pour steps monolithically with cap.
 All exposed edges shall have standard 3/4" chamfers.
 If a portion of the pier wall or concrete encasement is under water, reinforcement may be placed underwater into forms. Concrete shall be tremied according to Article 503.08 of the Standard Specifications to an elevation of 1'-0" above the water line at the time of construction

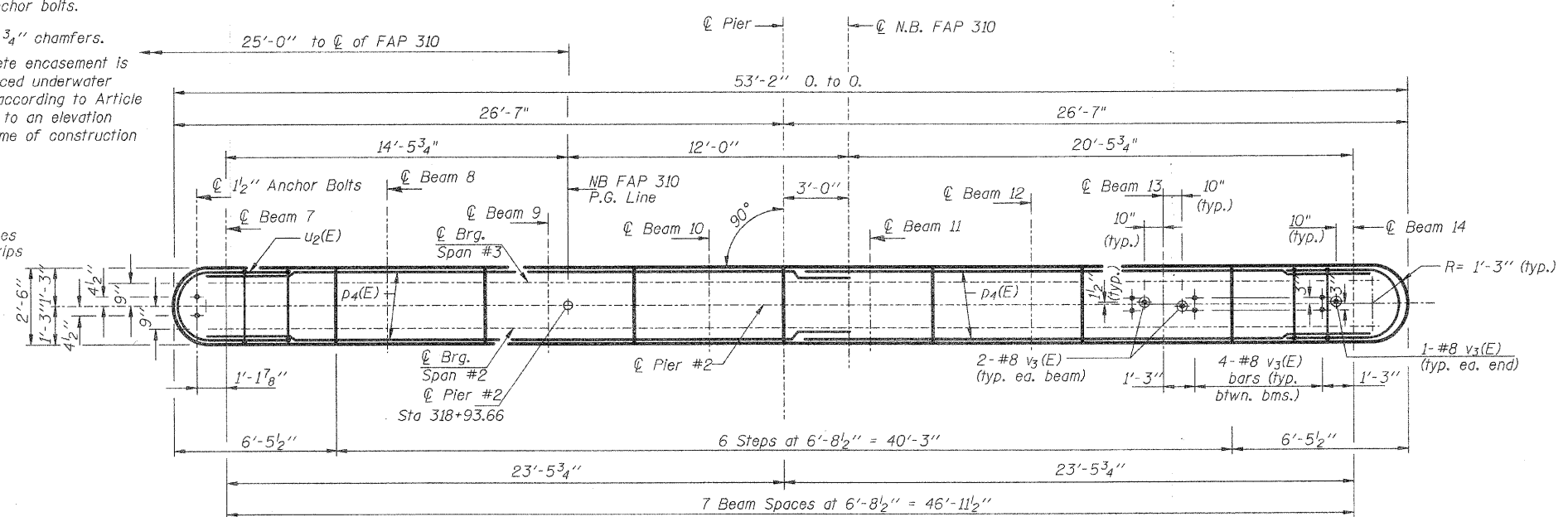
E.F. - Each Face
 E.E. - Each End

PILE DATA

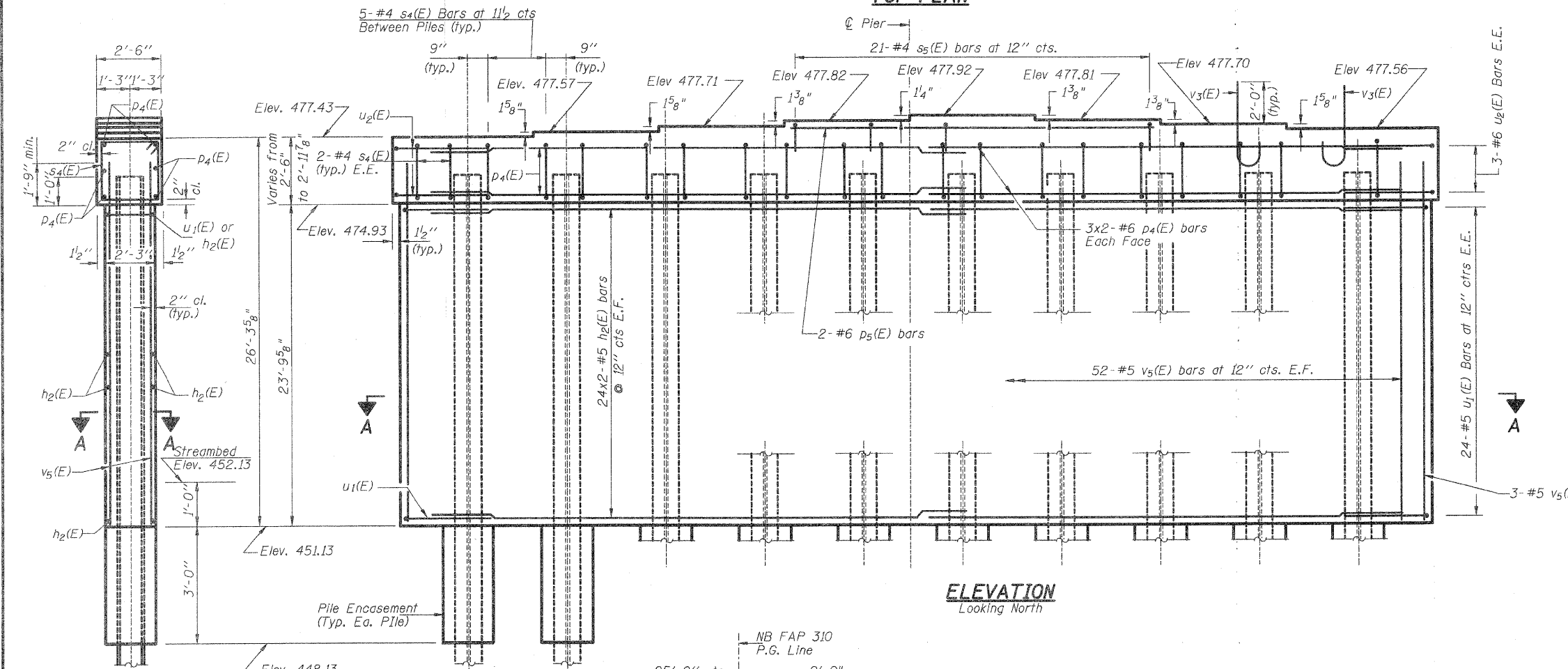
Type: Steel HP 14x89 w/ pile shoes
 Allowable Resistance Available: 235 kips
 Nominal Required Bearing: 705 kips
 Est. Length: 48'
 No. Req'd: 10

RTE.	SECTION	COUNTY	SHEETS	NO.
310	60-16-1, 42-1	JERSEY	481	213
STA.	TO STA.			
FED. ROAD DIST. NO.	ILLINOIS	FED. AID PROJECT		

Sheet 29 of 35 Sheets
CONTRACT NO. 76318

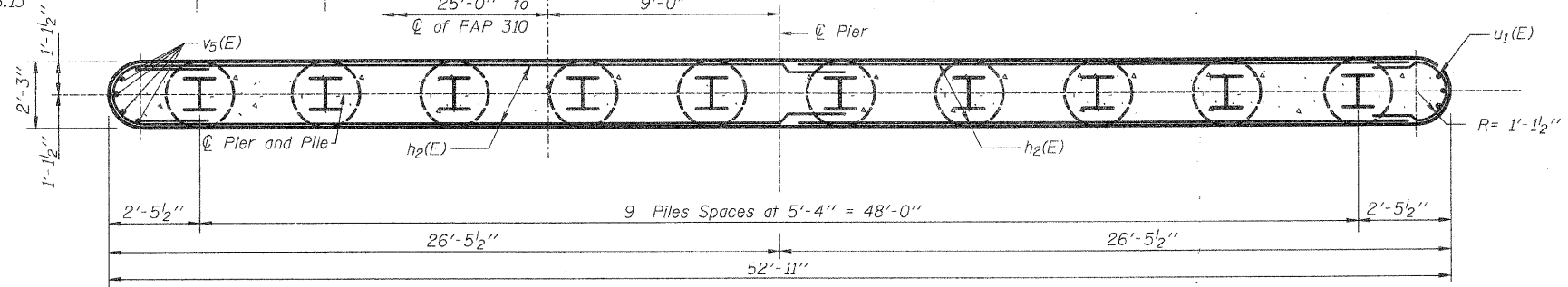


TOP PLAN

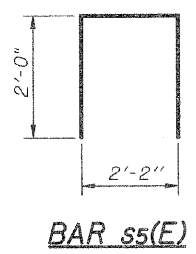


ELEVATION
Looking North

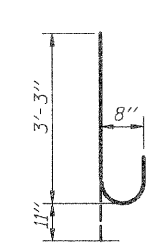
END VIEW



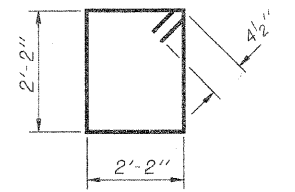
SECTION A-A



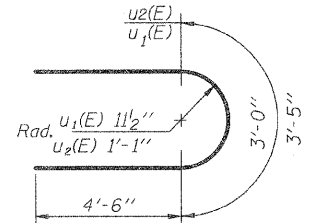
BAR s5(E)



BAR v3(E)



BAR s4(E)



BARS u1(E) & u2(E)

BILL OF MATERIAL

Bar	No.	Size	Length	Shape
h2(E)	96	#5	26'-10"	—
p4(E)	12	#6	27'-2"	—
p5(E)	2	#6	19'-10"	—
s4(E)	49	#4	9'-5"	□
s5(E)	21	#4	6'-2"	□
u1(E)	48	#5	12'-0"	U
u2(E)	6	#6	12'-5"	U
v3(E)	42	#8	4'-2"	U
v5(E)	110	#5	25'-5"	—
Concrete Structures			Cu. Yd.	117.5
Reinforcement Bars, Epoxy Coated			Pound	7730
Furnishing Steel Piles HP14x89			Foot	480
Driving Piles			Foot	480
Pile Shoes			Each	10
Underwater Struc Excav. Protection, Loc. No. 2			Each	1
Structure Excavation			Cu. Yd.	143.5
Concrete Encasement			Cu. Yd.	5.5

Min. Bar Lap
 #5 - 3'-0"
 #6 - 3'-7"

DESIGNED	M.E.B.
CHECKED	RK.M.
DRAWN	P.W.S.
CHECKED	M.E.B.-R.K.M.

PIER # 2
NORTHBOUND LANES
FAP-310
SECTION 60-16-1, 42-1
JERSEY COUNTY
STATION 318+48.66
STRUCTURE NO. 042-0027 (N.B.)

HR
 HURST - ROSCHE ENGINEERS, INC.
 601 NORTH BRUNS LANE
 SPRINGFIELD, IL 62702
 (217)-787-1199
 FAX (217)-793-1199