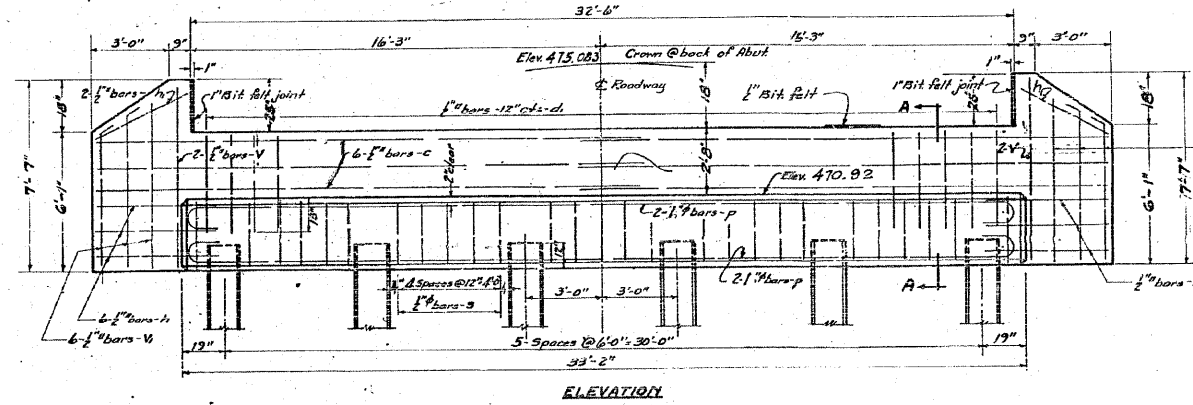


STATE OF ILLINOIS
DEPARTMENT OF TRANSPORTATION

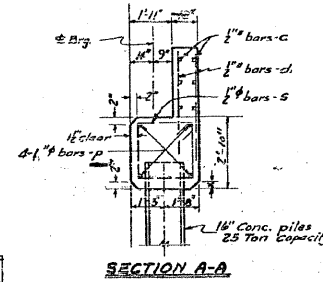
STATE OF ILLINOIS
DEPARTMENT OF PUBLIC WORKS & BUILDINGS
DIVISION OF HIGHWAYS

SECTION	SECTION	COUNTY	TOTAL SHEETS	SHEET NO.
F.A.P. No.	1113	Jersey Madison	163	97
FED. ROAD DIST. NO.	1113	SECTION	1	PROJ. NO. 87C

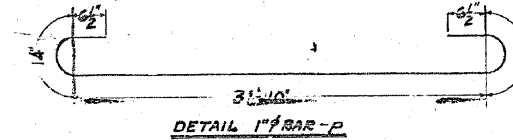
SHEET NO. 4
SHEETS 4



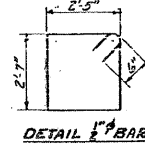
ELEVATION



SECTION A-A

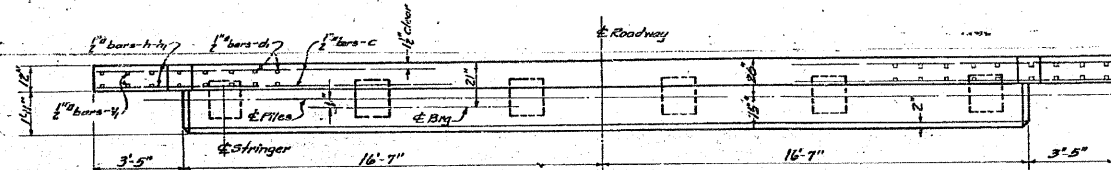


DETAIL 1" BAR-P

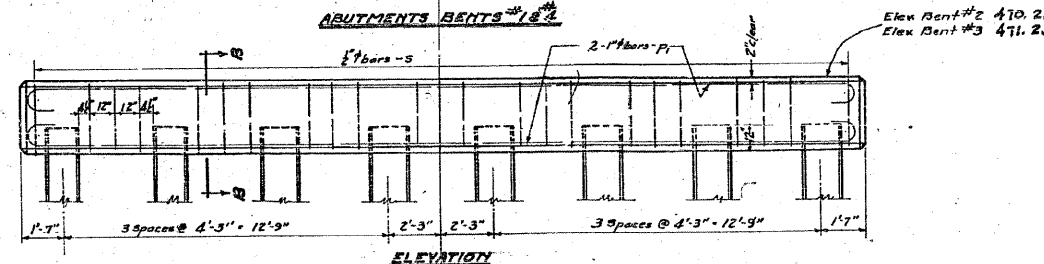


DETAIL 1" BAR-S

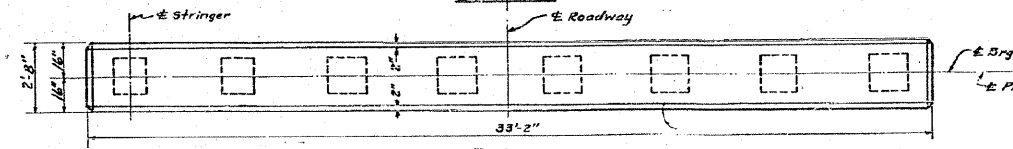
DETAIL 1/2" BAR-S



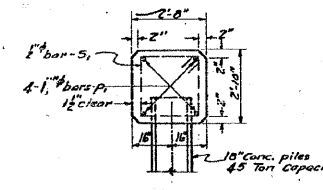
PLAN
ABUTMENTS BENTS #1 & 2



ELEVATION



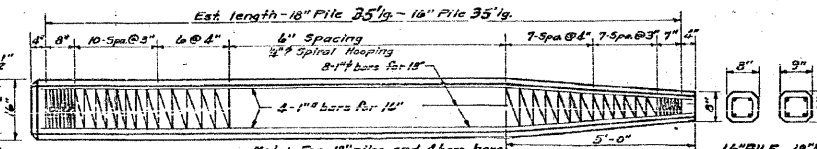
PLAN
BENTS #2 & 3



SECTION B-B

BILL OF MATERIAL

Bar	No.	Size	Length
C	24	1/2" Ø	21'-0"
d	128	1/2" Ø	3'-9"
h	24	1/2" Ø	4'-9"
h	8	1/2" Ø	3'-6"
V	8	1/2" Ø	7'-0"
V	24	1/2" Ø	7'-3"
S	54	1/2" Ø	11'-8"
S	46	1/2" Ø	11'-0"
P	16	1" Ø	35'-2"
Class X Concrete		Cu. Yds. 45.9	
Reinforcement Bars		Lbs. 3420	
16" Precast Conc. Piles (25g)		Lin. Ft. 420	
16" Precast Conc. Piles (45g)		Lin. Ft. 560	
16" Test Pile		Each One	
18" Test Pile		Each One	



DETAIL OF PRE-CAST CONCRETE PILES

PROJ. 87-C
PIASA CREEK BRIDGE
P.A.P. 4 - SEC. 253-B
JERSEY COUNTY
STA. 508+31

COMPUTED	N. U. Wheeler	EXAMINED	8-5-1938
CHECKED	P. D. Freeman	DRAWN	N. U. Wheeler
DRAWN	N. U. Wheeler	CHECKED	L. B. Diver
CHECKED	P. D. Freeman	APPROVED	Wm. L. Salsman
ASSEMBLED			
CHECKED			

DESIGNED	JMB
CHECKED	TES
DRAWN	R KING
CHECKED	TES

HOMER L. CHASTAIN & ASSOCIATES, LLP
CONSULTING ENGINEERS
DECATUR (217) 422-8544
CHICAGO (773) 714-0050
ROCKFORD (815) 489-0050
184-001397

FOR INFORMATION ONLY

FAP ROUTE 310 (US 67)
SECTION 60-16-1-1B
MADISON COUNTY

SHEET NO. 5	F.A.P. RTE.	SECTION	COUNTY	TOTAL SHEETS	SHEET NO.
	310	60-16-1-1B	MADISON	481	224
OF 5 SHEETS	FAP ROUTE 310 (US 67)		CONTRACT NO. 76318		
FED. ROAD DIST. NO.		ILLINOIS FED. AID PROJECT			