

F.A.I. RTE.	SECTION	COUNTIES	TOTAL SHEETS	SHEET NO.
255	DIST. 8 LIGHT POLE 2009-1	•	146	1
FED. ROAD DIST. NO. -	ILLINOIS	CONTRACT NO. 76C09		
MADISON, MONROE & ST. CLAIR				

STATE OF ILLINOIS  
DEPARTMENT OF TRANSPORTATION  
DIVISION OF HIGHWAYS

# PROPOSED HIGHWAY PLANS

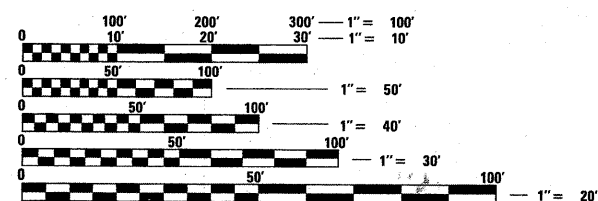
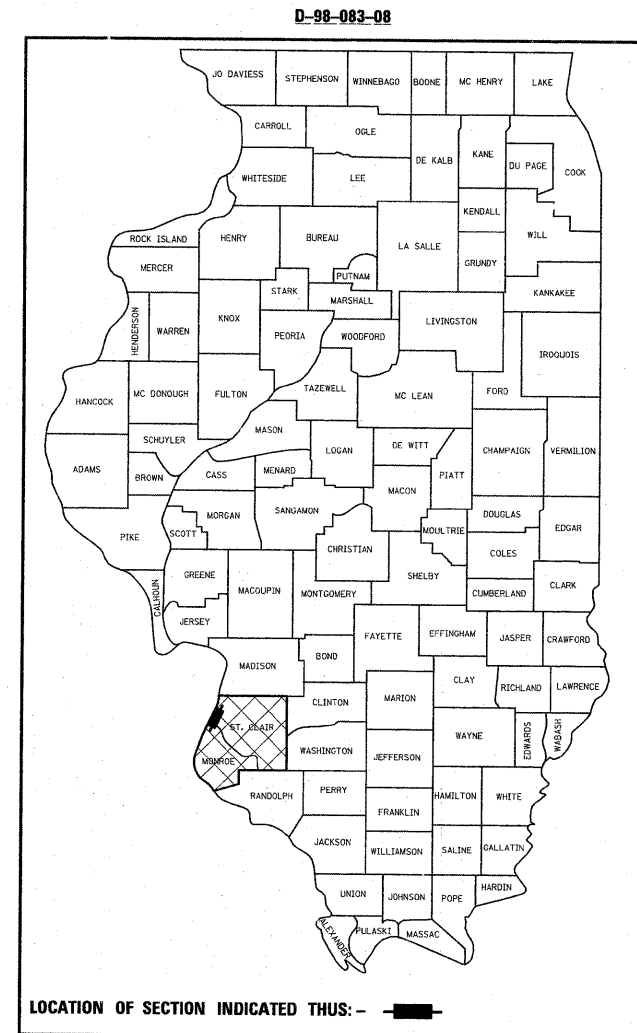
F.A.I. ROUTE 255  
SECTION DIST. 8 LIGHT POLE 2009-1

MADISON, MONROE & ST. CLAIR COUNTIES  
VARIOUS LIGHTING EQUIPMENT  
REPLACEMENT LOCATIONS  
ALONG I-255 (JB BRIDGE TO I-270)  
C-98-077-08

INDEX OF SHEETS  
SEE SHEET 2

**STANDARDS**

701101-02    701106-02    701400-04  
701406-05    701456            701801-04



FULL SIZE PLANS HAVE BEEN PREPARED USING STANDARD ENGINEERING SCALES. REDUCED SIZED PLANS WILL NOT CONFORM TO STANDARD SCALES. IN MAKING MEASUREMENTS ON REDUCED PLANS, THE ABOVE SCALES MAY BE USED.

**J.U.L.I.E.**  
JOINT UTILITY LOCATION INFORMATION FOR EXCAVATION  
1-800-892-0123  
OR 811

PROJECT ENGINEER: PATTI LEBEAU (618) 346-3179  
SQUAD LEADER: MICHAEL PRESTON (618) 346-3143

CONTRACT NO. 76C09

SEE SHEET 2 FOR LOCATION MAP

STATE OF ILLINOIS  
DEPARTMENT OF TRANSPORTATION  
DIVISION OF HIGHWAYS

SUBMITTED June 5 2010  
[Signature]  
DEPUTY DIRECTOR OF HIGHWAYS, REGION ENGINEER

June 25 2010  
Scott E. Still, P.E. /a  
Acting ENGINEER OF DESIGN AND ENVIRONMENT

June 25 2010  
Christine M. Reed /a  
DIRECTOR OF HIGHWAYS, CHIEF ENGINEER

**PRINTED BY THE AUTHORITY  
OF THE STATE OF ILLINOIS**