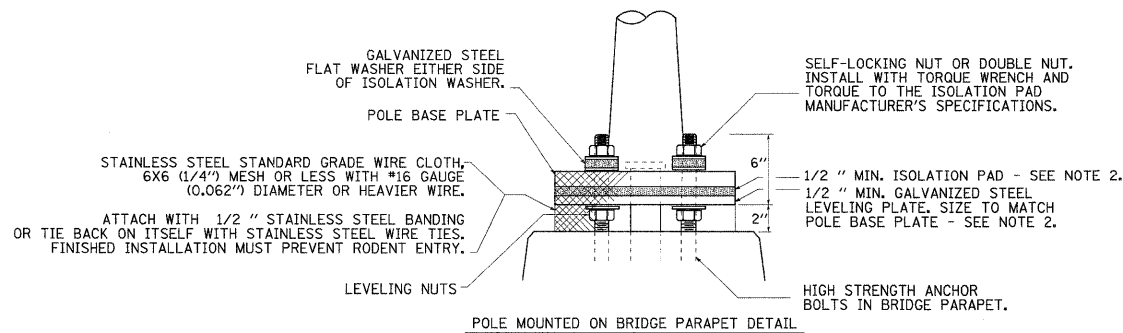


ELECTRICAL GENERAL NOTES

- THE MANUFACTURER OF THE LIGHT FIXTURE SHALL BE REQUIRED TO SUPPLY AN AIMING DEVICE TO ADJUST THE LUMINAIRES TO THEIR CORRECT ANGLE. MOUNTING ANGLES ARE BASED ON THE EVALUATION OF THE FOUNDATION LEVEL WITH THE ROADWAY.
- NO ADDITIONAL COMPENSATION WILL BE ALLOWED FOR REQUIRED VERTICAL LUMINAIRE MOUNTING ANGLE ADJUSTMENT DURING FINAL INSPECTION.
- THE CONTRACTOR SHALL FIELD VERIFY EXISTING BOLT PATTERNS, DIAMETERS AND THREAD COUNTS. THE COST OF HARDWARE REQUIRED FOR MOUNTING LIGHT POLES ON EXISTING FOUNDATIONS SHALL BE INCIDENTAL TO THE CONTRACT UNIT PRICE FOR LIGHT POLES.
- A SURGE PROTECTOR SHALL BE INSTALLED IN EACH LIGHT POLE. THE SURGE PROTECTOR SHALL BE WIRED AS SHOWN IN THE WIRING SCHEMATICS. LIGHT POLE UNIT PRICE SHALL INCLUDE THIS ITEM AND WORK.
- ~~ALL LIGHT POLE LUMINAIRES SHALL BE FACTORY COATED DARK BRONZE TO MATCH THEIR ASSOCIATED POLE. LIGHT POLE SHAFTS, TRANSFORMER BASES, BRACKET ARMS AND ALL MOUNTING HARDWARE SHALL HAVE A DARK BRONZE POWDER COAT FINISH.~~
- ALL LUMINAIRES SHALL BE 480 VOLTS.
- THE COST OF THE POLE IDENTIFICATION SIGN PANEL SHALL BE INCLUDED IN THE PRICE OF THE LIGHT POLE.
- THE CONTRACTOR SHALL COORDINATE HIS CONSTRUCTION ACTIVITIES WITH WORK TO BE PERFORMED ON PROJECTS BY OTHER CONTRACTORS. THERE SHOULD ALSO BE COOPERATION OF CONSTRUCTION ACTIVITIES BETWEEN CONTRACTORS.
- ALL LUMINAIRES SHALL HAVE TYPE 2 DISTRIBUTION.
- WHERE LIGHT POLES ARE MOUNTED ON BRIDGE PARAPETS, THE SPACE BETWEEN THE CONCRETE AND THE POLE PLATE SHALL BE COVERED WITH STAINLESS STEEL MESH AND BAND CLAMPS, AFTER THE POLES ARE PUMP TO THE SATISFACTION OF THE ENGINEER. THE STAINLESS STEEL MESH AND BAND CLAMPS SHALL BE INCLUDED IN THE UNIT COST OF PROVIDING THE POLE. THIS REQUIREMENT ALSO APPLIES TO LIGHT POLES INSTALLED ON FOUNDATIONS LOCATED BETWEEN CONCRETE BARRIERS.
- CONDUCTOR SPLICES SHALL BE IN POLE BASES OR JUNCTION BOXES. SPLICES BELOW GRADE WILL NOT BE PERMITTED.
- ILLINOIS STATE LAW REQUIRES A 48 HOUR NOTICE BE GIVEN TO UTILITIES BEFORE DIGGING. FIELD MARKING OF FACILITIES MAY BE OBTAINED BY CONTACTING J.U.L.I.E. OR FOR NON-MEMBERS, THE UTILITY COMPANY DIRECTLY. AGENCIES KNOWN TO HAVE FACILITIES WITHIN THE PROJECT AREA ARE AS FOLLOWS:
 - 360NETWORKS (USA) INC. (COMMUNICATIONS)
 - AMEREN IP (GAS)
 - AMEREN UE (ELECTRIC)
 - AT&T ILLINOIS (COMMUNICATIONS)
 - BUCKEYE PARTNERS LP-WOOD RIVER PIPELINE (PIPELINE)
 - CENTERPOINT ENERGY (PIPELINE)
 - CHARTER COMMUNICATIONS, INC. (CABLE TV)
 - CITY OF CENTERVILLE (SANITARY SEWER)
 - CITY OF COLUMBIA (SANITARY SEWER AND WATER)
 - COMMONFIELDS OF CAHOKIA PUBLIC WATER DISTRICT (SANITARY SEWER AND WATER)
 - CONOCO PHILLIPS PIPE LINE COMPANY (PIPELINE)
 - HARRISONVILLE TELEPHONE CO. (COMMUNICATIONS)
 - MCI NETWORK SERVICES, INC. (COMMUNICATIONS)
 - MONROE COUNTY ELECTRIC CO-OPERATIVE, INC. (ELECTRIC)
 - PRAIRIE DU PONT PUBLIC WATER (WATER)
 - SUGAR LOAF TOWNSHIP TOWNSHIP SEWER SYSTEM (SANITARY SEWER)
 - VILLAGE OF CAHOKIA (SANITARY SEWER AND WATER)
 - VILLAGE OF DUPO (GAS, SANITARY SEWER AND WATER)
 MEMBERS OF J.U.L.I.E. PHONE (800) - 892-0123 ARE INDICATED BY *
 NON-J.U.L.I.E. MEMBERS MUST BE NOTIFIED INDIVIDUALLY.
- UNDERGROUND MARKING TAPE SHALL BE INSTALLED WITH ALL TRENCH AND BACKFILL FOR ELECTRICAL WORK IN ACCORDANCE WITH ARTICLE S 819.05 AND 1066.05 OF THE STANDARD SPECIFICATIONS.
- COORDINATION WITH THE DEPARTMENT'S BUREAU OF OPERATIONS IS REQUIRED BEFORE TRENCHING TO LOCATE HIGHWAY LIGHTING/PUMPING/ITS FACILITIES AND TO COORDINATE OTHER FIELD ACTIVITIES.
- NO OVER NIGHT LANE CLOSURES SHALL BE PERMITTED.

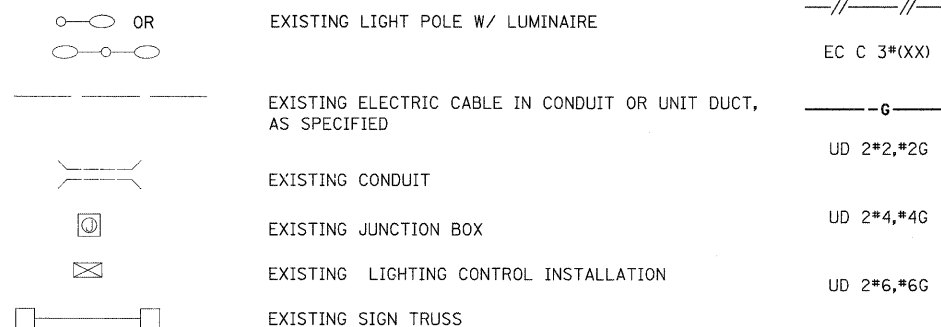
17. ALL UTILITIES AND DRAINAGE STRUCTURES SHALL BE LOCATED IN THE FIELD PRIOR TO ANY ATTEMPT TO INSTALL UNIT DUCT OR REMOVE ELECTRIC CABLE IN CONDUIT OR UNIT DUCT. THE COST FOR LOCATING DRAINAGE STRUCTURES SHALL BE INCLUDED IN THE UNIT PRICE FOR TRENCH AND BACKFILL FOR ELECTRICAL WORK (SEE INLET AND PIPE PROTECTION SCHEDULE).



GENERAL NOTES

- THE VIBRATION ISOLATION PAD AND LEVELING PLATE SHALL MATCH THE FOOTPRINT OF THE POLE BASE PLATE.
- THICKNESS OF ISOLATION PAD AND WASHERS SHALL BE ACCORDING TO THE ISOLATION PAD MANUFACTURER'S RECOMMENDATIONS BASED UPON POLE HEIGHT AND LOADING.
- SHOULD THE LENGTH OF THE EXPOSED ANCHOR BOLTS BE TOO SHORT ON AN EXISTING BRIDGE TO MOUNT THE POLES AS SHOWN, THEN THE LEVELING PLATE SHALL BE MOUNTED DIRECTLY ON THE CONCRETE AND LEVELED WITH STAINLESS STEEL WASHERS. REMOVE CONCRETE AS DIRECTED BY THE ENGINEER TO FULLY THREAD THE TOP NUT.

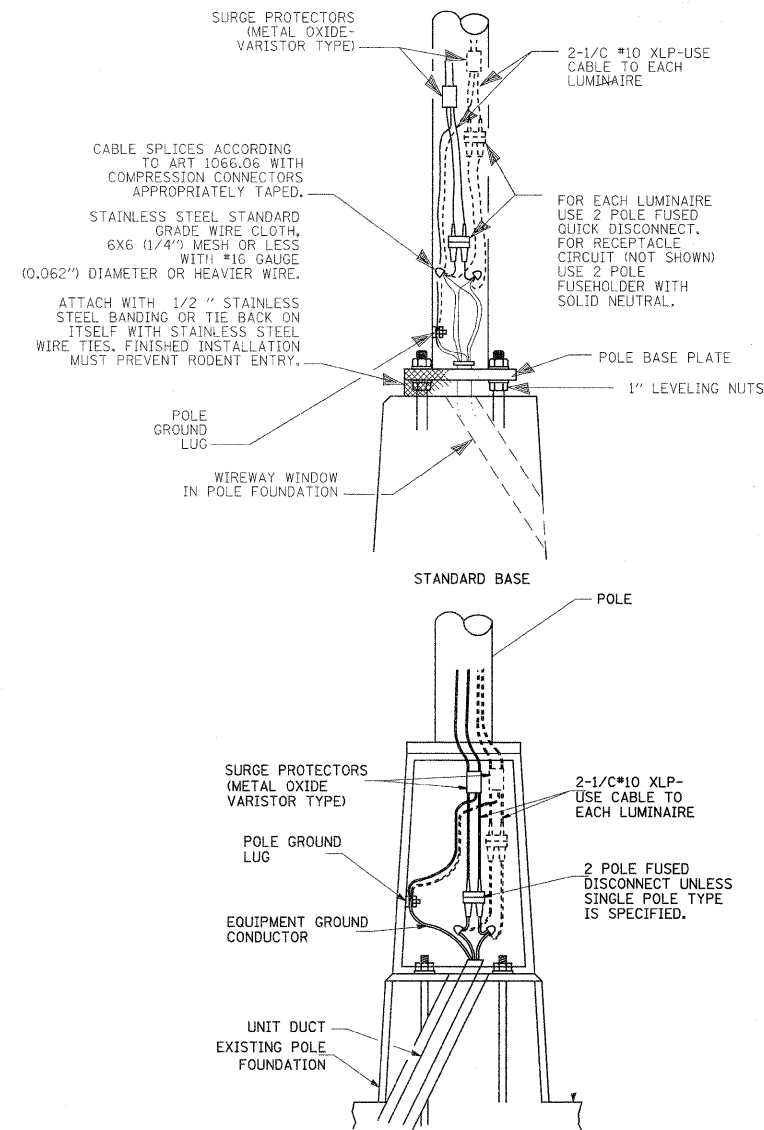
LEGEND



PROPOSED LIGHT POLE LEGEND

BOLT PATTERN	50' MH POLES				20' MH POLES	18' MH POLES	17' MH POLES	
	400W	310W	400W/310W	250W	150W	150W	250W	150W
18"R								
17"R								
16"R								
15"R								
4" X 14.5" RECT.								

TB = TRANSFORMER BASE 8"MA = 8' MAST ARM R = CIRCLE RADIUS RECT. = RECTANGULAR
 ALL PROPOSED POLES NOT GIVEN THE "8"MA" CALLOUT HAVE 15' MAST ARMS



WIRING DETAIL

GENERAL NOTES

- ALL TAPED SPLICES SHALL USE 2 LAYERS OF ELECTRICAL TAPE OVER 3 LAYERS OF RUBBER TAPE AS REQUIRED BY THE STANDARD SPECIFICATIONS. COAT THE FINISHED TAPED SPLICE WITH BONDING COMPOUND.
- ALL CABLE SPLICES SHALL BE TAPED UNLESS ANOTHER METHOD HAS BEEN SPECIFICALLY APPROVED BY THE ENGINEER.
- FOR EXAMPLE PURPOSES THE POLE IS SHOWN ON AN ANCHOR BASE. IF THE POLE IS REQUIRED TO BE SET ON A BREAKAWAY BASE, CONSULT THE STANDARD SPECIFICATIONS.
- ALL DIMENSIONS ARE IN MILLIMETERS (INCHES) UNLESS OTHERWISE SHOWN.

FILE NAME =	USER NAME = prestonme	DESIGNED -	REVISED -	STATE OF ILLINOIS DEPARTMENT OF TRANSPORTATION	ELECTRICAL GENERAL NOTES, LEGEND AND POLE DETAILS	F.A.I. RTE.	SECTION	COUNTY	TOTAL SHEETS	SHEET NO.	
ca:\p\work\p\dot\prestonme\dms65337\d876c09-sh1-light.agn	PLOT SCALE = 50.0000 ' / IN.	DRAWN -	REVISED -			255	DIST. 8 LIGHT POLE 2009-1	*	146	20	
PLOT DATE = 6/25/2010	DATE	CHECKED -	REVISED -			CONTRACT NO. T6C09					
		DATE	REVISED -			FED. ROAD DIST. NO. [ILLINOIS] FED. AID PROJECT					