

**LEGEND**

① 12" SS REPAIR CLAMP, 25" LENGTH

**NOTES**

1 BOLTS & NUTS SHALL BE 304 SS PER ASTM A193 AND A194

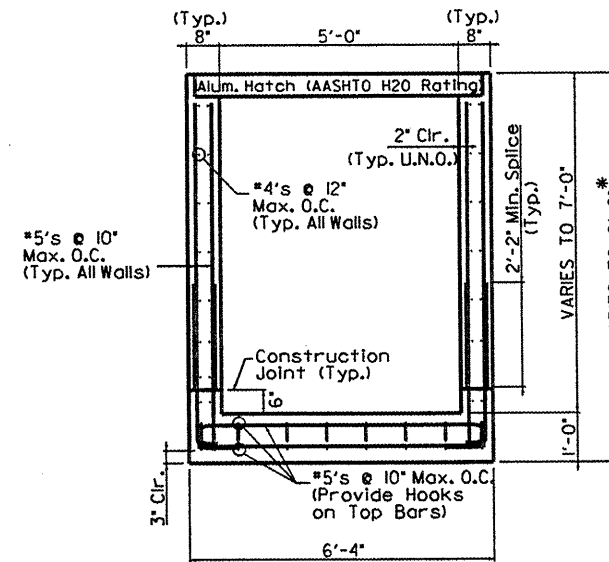
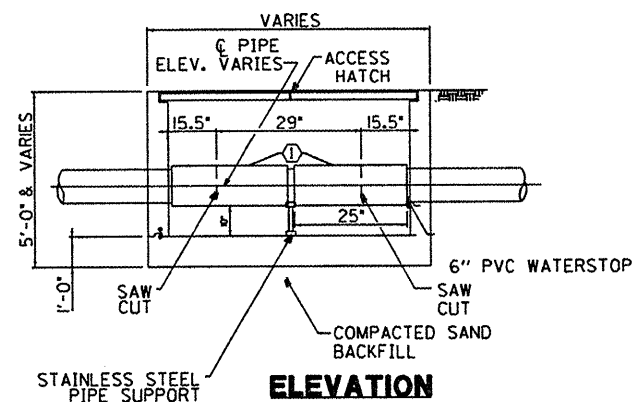
**NOTES**

REINFORCEMENT BARS SHALL BE ACCORDING TO SECTION 508 AND ARTICLE 1006.10 AND SHALL CONFORM TO ASTM A706, GRADE 60.

CONCRETE STRUCTURES SHALL BE ACCORDING TO SECTION 503 AND THE CLASS SHALL BE SI.

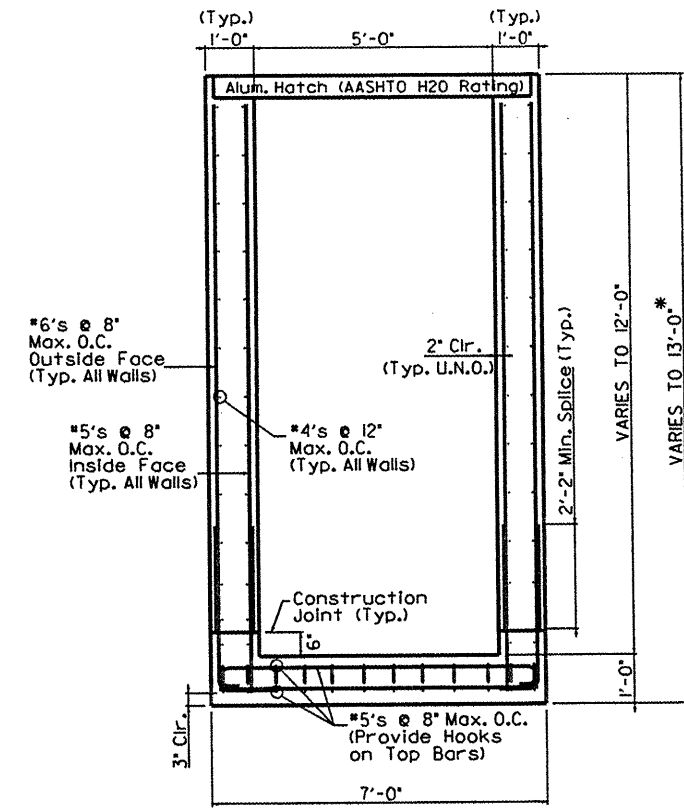
COMPACTED SAND BACKFILL SHALL BE ACCORDING TO SECTION 207.

REPAIR CLAMP AND PIPE SUPPORTS SHALL BE INCLUDED IN THE PAY ITEM CLEANOUT VAULT.



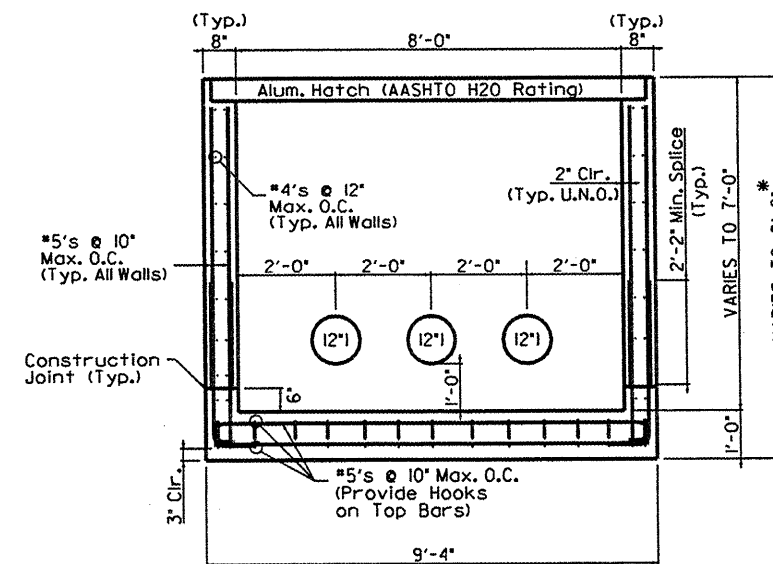
**SHORT WALL ELEVATION**

\* MAXIMUM INSTALLATION DEPTH LIMITED TO 8'-0" FOR DESIGN REINFORCEMENT SHOWN.



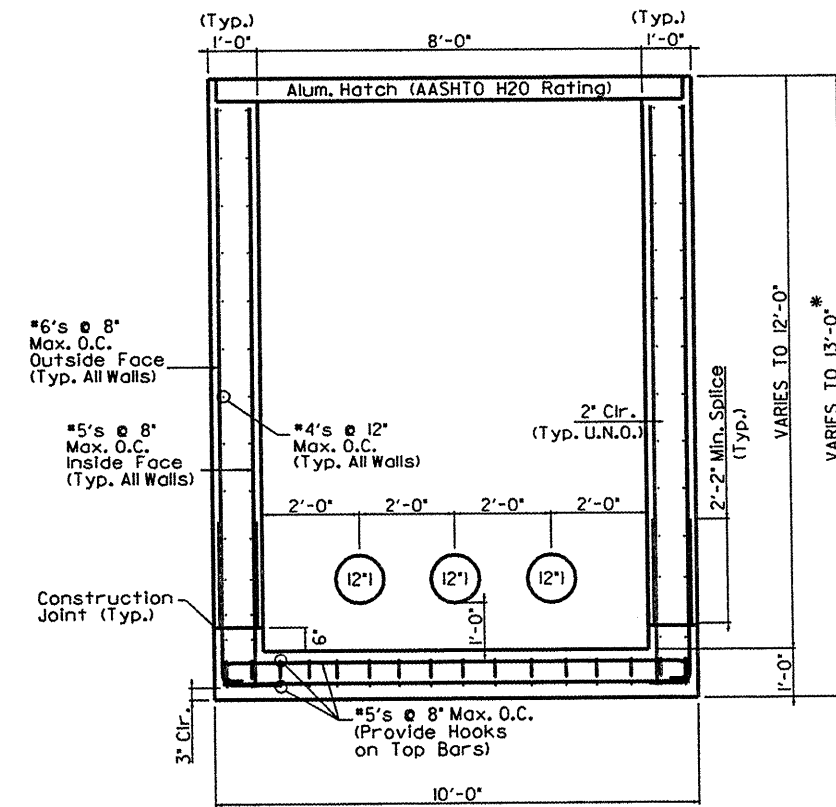
**SHORT WALL ELEVATION**

\* MAXIMUM INSTALLATION DEPTH LIMITED TO 13'-0" FOR DESIGN REINFORCEMENT SHOWN. CONTACT STRUCTURAL ENGINEER FOR PROPOSED INSTALLATION DEPTHS GREATER THAN 13'-0".



**LONG WALL ELEVATION**

\* MAXIMUM INSTALLATION DEPTH LIMITED TO 8'-0" FOR DESIGN REINFORCEMENT SHOWN.



**LONG WALL ELEVATION**

\* MAXIMUM INSTALLATION DEPTH LIMITED TO 13'-0" FOR DESIGN REINFORCEMENT SHOWN. CONTACT STRUCTURAL ENGINEER FOR PROPOSED INSTALLATION DEPTHS GREATER THAN 13'-0".

FILE NAME *	USER NAME * #USER#	DESIGNED - EJC	REVISED -	STATE OF ILLINOIS DEPARTMENT OF TRANSPORTATION	VAULT DETAILS CLEANOUT INSTALLATION MISSOURI AVENUE		F.A. RTE.	SECTION	COUNTY	TOTAL SHEETS	SHEET NO.	
#FILE#		DRAWN - WPM	REVISED -		SCALE: NTS	SHEET NO. 19 OF SHEETS	STA. TO STA.	VARIOUS/DIST 8 DEEP WELLS 2010-2	ST. CLAIR	20	19	
		CHECKED - EEA	REVISED -									CONTRACT NO. 76D62
		DATE - 05/06/10	REVISED -									ILLINOIS FED. AID PROJECT