

INDEX OF SHEETS

- 1 COVER SHEET
- 2 GENERAL NOTES
- 3 SUMMARY OF QUANTITIES
- 4 SCHEDULE OF QUANTITIES
- 5-16 PLAN AND PROFILE
- 17-20 DETAILS

STANDARDS

- 000001-05 STANDARD SYMBOLS, ABBREVIATIONS AND PATTERNS
- 280001-05 TEMPORARY EROSION CONTROL SYSTEMS
- 602701-02 MANHOLE STEPS
- 701001-02 OFF-RD OPERATIONS, 2L, 2W, MORE THAN 15' (4.5 m) AWAY
- 701006-03 OFF-RD OPERATIONS, 2L, 2W, 15' (4.5 m) TO 24" (600 mm) FROM PAVEMENT EDGE
- 701201-03 LANE CLOSURE, 2L, 2W, DAY ONLY, FOR SPEEDS >45 MPH
- 701901-01 TRAFFIC CONTROL DEVICES

STATE OF ILLINOIS
DEPARTMENT OF TRANSPORTATION
DIVISION OF HIGHWAYS
**PROPOSED
HIGHWAY PLANS**

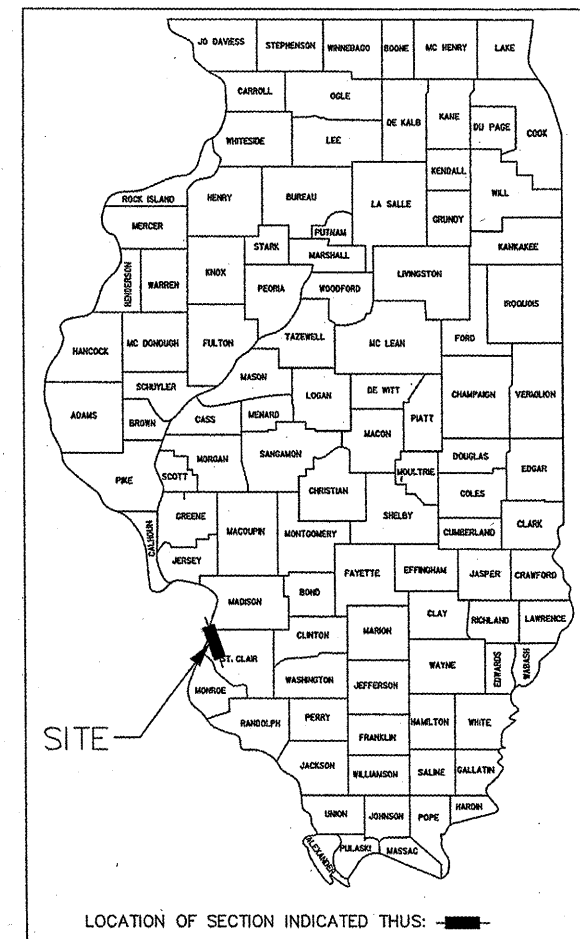
FAP ROUTE - VARIOUS
SECTION DIST 8 DEEP WELLS 2010-2

CLEANOUT INSTALLATION
IN EAST ST. LOUIS, ILLINOIS
ST. CLAIR COUNTY

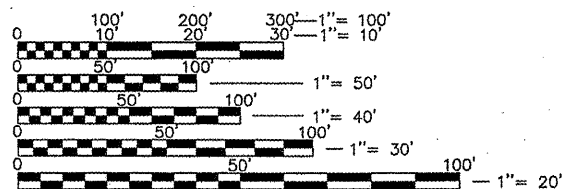
C-98-043-10

F.A.P. RTE.	SECTION	COUNTY	TOTAL SHEETS	SHEET NO.
VARIOUS	DIST 8 DEEP WELLS 2010-2	ST. CLAIR	20	1
ILLINOIS			CONTRACT NO. 76D62	

D-98-029-10



MISSOURI AVENUE CLEANOUT INSTALLATION — 25TH STREET CLEANOUT INSTALLATION



REDUCED SIZED PLANS WILL NOT CONFORM TO STANDARD SCALES. IN MAKING MEASUREMENTS ON REDUCED PLANS, THE ABOVE SCALES MAY BE USED.

J.U.L.I.E.
JOINT UTILITY LOCATION INFORMATION FOR EXCAVATION
1-800-892-0123
OR 811

PROJECT ENGINEER: PATTI LEBEAU (618) 346-3179
PROJECT MANAGER: ARTHUR MUEHLFELD (618) 346-3209

CONTRACT NO. 76D62

GROSS LENGTH = 23,433 FT. = 4.44 MILE
NET LENGTH = 23,433 FT. = 4.44 MILE



PREPARED BY
MACTEC
ENGINEERING AND CONSULTING, INC.
ILLINOIS PROFESSIONAL DESIGN FIRM LICENSE #062-055296

ERIC J. CARLSON
IL REG. P.E. NO. 062-055296
EXPIRATION DATE 11-30-11

STATE OF ILLINOIS
DEPARTMENT OF TRANSPORTATION
DIVISION OF HIGHWAYS

SUBMITTED: May 13 2010
May 13 2010
DEPUTY DIRECTOR OF HIGHWAYS, REGION 5 ENGINEER

June 25 2010
Scott E. Stitt, P.E.
acting ENGINEER OF DESIGN AND ENVIRONMENT

June 25 2010
Christine M. Reedler
DIRECTOR OF HIGHWAYS, CHIEF ENGINEER

PRINTED BY THE AUTHORITY OF THE STATE OF ILLINOIS

GENERAL NOTES

1. PRIOR TO EXCAVATION AND/OR TRENCHING THE CONTRACTOR SHALL LOCATE ALL EXISTING DEPARTMENT OWNED UNDERGROUND FACILITIES AND WELL DISCHARGE FORCE MAIN PIPE. ANY DAMAGE TO THE FACILITIES BY THE CONTRACTOR'S OPERATIONS SHALL BE IMMEDIATELY REPAIRED BY THE CONTRACTOR TO THE SATISFACTION OF THE ENGINEER AT THE CONTRACTOR'S EXPENSE. IT SHALL BE THE CONTRACTOR'S RESPONSIBILITY TO LOCATE THE DISCHARGE FORCE MAIN LINES.
2. COORDINATION WITH THE DEPARTMENT'S BUREAU OF OPERATIONS IS REQUIRED BEFORE ANY TRENCHING SHALL BE DONE TO LOCATE HIGHWAY LIGHTING/PUMP STATION/INTELLIGENT TRANSPORTATION FACILITIES AND ANY OTHER IDOT OWNED UTILITIES AND TO COORDINATE OTHER FIELD ACTIVITIES. THE CONTRACTOR SHALL CONTACT (IDOT) DAVE WALKER AT (618)346-3274 BEFORE COMMENCING WORK.
3. ILLINOIS STATE LAW REQUIRES A 48-HOUR NOTICE TO BE GIVEN TO UTILITIES BEFORE DIGGING. FIELD MARKING OF FACILITIES MAY BE OBTAINED BY CONTACTING J.U.L.I.E. OR FOR NON-MEMBERS, THE UTILITY COMPANY DIRECTLY. AGENCIES KNOWN TO HAVE FACILITIES WITHIN THE PROJECT AREA ARE AS FOLLOWS:
 - AMEREN IP - GAS
 - AMEREN UE - ELECTRIC
 - AT&T ILLINOIS - COMMUNICATIONS
 - CHARTER COMMUNICATIONS, INC. - CABLE TV
 - CITY OF EAST ST. LOUIS - LIGHTING
 - ILLINOIS AMERICAN WATER COMPANY - WATER
 - LEVEL 3 COMMUNICATIONS, LLC - COMMUNICATIONS
 - LIGHTCORE - COMMUNICATIONS
 - METRO - COMMUNICATIONS
 - PAETEC - COMMUNICATIONS
 - VERIZON BUSINESS - COMMUNICATIONS
 - 360 NETWORKS (USA) INC. - COMMUNICATIONS

MEMBERS OF J.U.L.I.E. ((800) 892-0123) ARE INDICATED BY *. NON-J.U.L.I.E. MEMBERS MUST BE NOTIFIED DIRECTLY.
4. THE CONTRACTOR SHALL VERIFY ALL DIMENSIONS AND CONDITIONS IN THE FIELD PRIOR TO CONSTRUCTION AND ORDERING MATERIALS.
5. CLEANOUT VAULT LOCATIONS MAY BE FIELD ADJUSTED TO MINIMIZE CONFLICTS WITH EXISTING CONDITIONS, INCLUDING UTILITY CONFLICTS. FIELD ADJUSTMENTS MUST BE APPROVED IN WRITING BY THE ENGINEER.
6. CONTRACTOR TO DELIVER ITEM '12 INCH PIPE CLAMP (4 EACH) DIRECTLY TO IDOT ENGINEER.
7. IF THE CONTRACTOR, FOR HIS CONSTRUCTION ACTIVITY, REMOVES TREES WITHIN THE RIGHT-OF-WAY LIMITS WHICH ARE NOT DESIGNATED ON THE PLANS FOR REMOVAL, I.E. IN ORDER TO GAIN ACCESS TO THE PROJECT SITE; IT WILL BE HIS RESPONSIBILITY TO REPLACE THE TREES AT A 1:1 RATIO. THE TREES WILL BE REPLACED WITH A 1 GALLON NATIVE ILLINOIS TREE SPECIES AND SHALL BE APPROVED BY THE ENGINEER. THE TREE REMOVAL AND TREE REPLACEMENT WILL BE AT THE CONTRACTOR'S EXPENSE, AND NO ADDITIONAL COMPENSATION WILL BE ALLOWED.
8. ALL AREAS DISTURBED FOR ANY REASON SHALL BE PERMANENTLY SEEDED AS DIRECTED BY THE ENGINEER. ALL AREAS DISTURBED BY THE CONTRACTOR OUTSIDE THE PROPOSED CONSTRUCTION LIMITS SHALL BE SEEDED AT THE CONTRACTOR'S EXPENSE.
9. CONTRACTOR TO REMOVE AND REPLACE APPROXIMATELY 120-LF CHAIN LINK FENCE TO ACCESS CLEANOUT LOCATIONS.

FILE NAME =	USER NAME = #USER#	DESIGNED - EJC	REVISED - -----	STATE OF ILLINOIS DEPARTMENT OF TRANSPORTATION	GENERAL NOTES CLEANOUT INSTALLATION 25TH STREET & MISSOURI AVENUE		F.A.P. RTE.	SECTION	COUNTY	TOTAL SHEETS	SHEET NO.
#FILE#		DRAWN - JLA	REVISED - -----		SCALE: N/A	SHEET NO. 2 OF .. SHEETS	STA. TO STA.	VARIOUS/DIST 8 DEEP WELLS 2010-2	ST. CLAIR	20	2
		CHECKED - EEA	REVISED - -----								
		DATE - 05/06/10	REVISED - -----								
							ILLINOIS FED. AID PROJECT CONTRACT NO. 76D62				

SUMMARY OF QUANTITIES			
PAY ITEM NUMBER	ITEMS	UNITS	Y007
			QUANTITY
25000200	SEEDING, CLASS 2	ACRE	0.25
25000400	NITROGEN FERTILIZER NUTRIENT	POUND	22.5
25000500	PHOSPHORUS FERTILIZER NUTRIENT	POUND	22.5
25000600	POTASSIUM FERTILIZER NUTRIENT	POUND	22.5
25100115	MULCH, METHOD 2	ACRE	0.25
28000400	PERIMETER EROSION BARRIER	FOOT	1680
67100100	MOBILIZATION	L SUM	1
70100450	TRAFFIC CONTROL AND PROTECTION, STANDARD 701201	L SUM	1
70103815	TRAFFIC CONTROL SURVEILLANCE	CAL DA	135
X0326447	FORCE MAIN CLEANOUT VAULT	EACH	21
X0326449	FORCE MAIN CLEANING	FOOT	24362
X0325207	TELEVISION INSPECTION OF SEWER	FOOT	23433
X0326973	12 INCH PIPE CLAMP (FURNISHED)	EACH	4
X0326974	LOCATING DEEP WELL FORCE MAIN	FOOT	210
80300110	LOCATING UNDERGROUND CABLE, SPECIAL	EACH	11
66410200	CHAIN LINK FENCE (SPECIAL)	FOOT	120
67000400	ENGINEER'S FIELD OFFICE, TYPE A	CAL MO	5
X0326975	CONFINED SPACE ENTRY SAFETY EQUIPMENT (COMPLETE)	EACH	1
66900200	NON-SPECIAL WASTE DISPOSAL	CU YD	945
20800150	TRENCH BACKFILL	CU YD	533
66900450	SPECIAL WASTE PLANS AND REPORT	L SUM	1
66900530	SOIL DISOPOSAL ANALYSIS	EACH	2

URBAN
100% STATE

FILE NAME =	USER NAME = #USER#	DESIGNED - EJC	REVISED -
#FILE#		DRAWN - JLA	REVISED -
	PLOT SCALE = #SCALE#	CHECKED - EEA	REVISED -
	PLOT DATE = #DATE#	DATE - 05/06/10	REVISED -

STATE OF ILLINOIS
DEPARTMENT OF TRANSPORTATION

SUMMARY OF QUANTITIES CLEANOUT INSTALLATION
25TH STREET & MISSOURI AVENUE

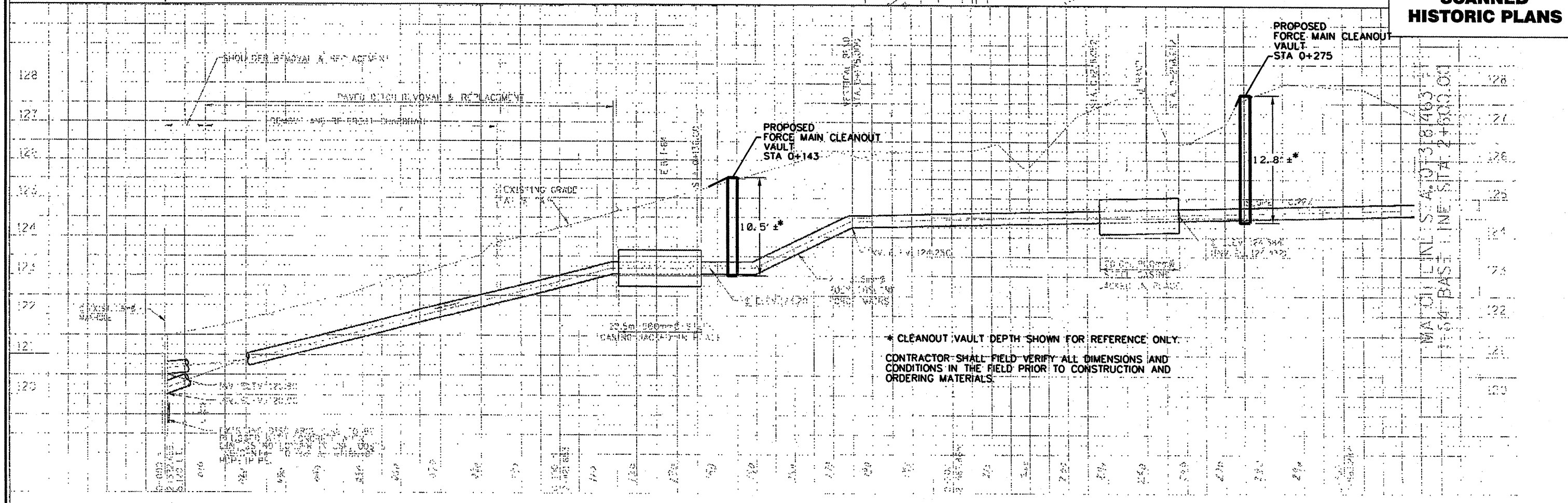
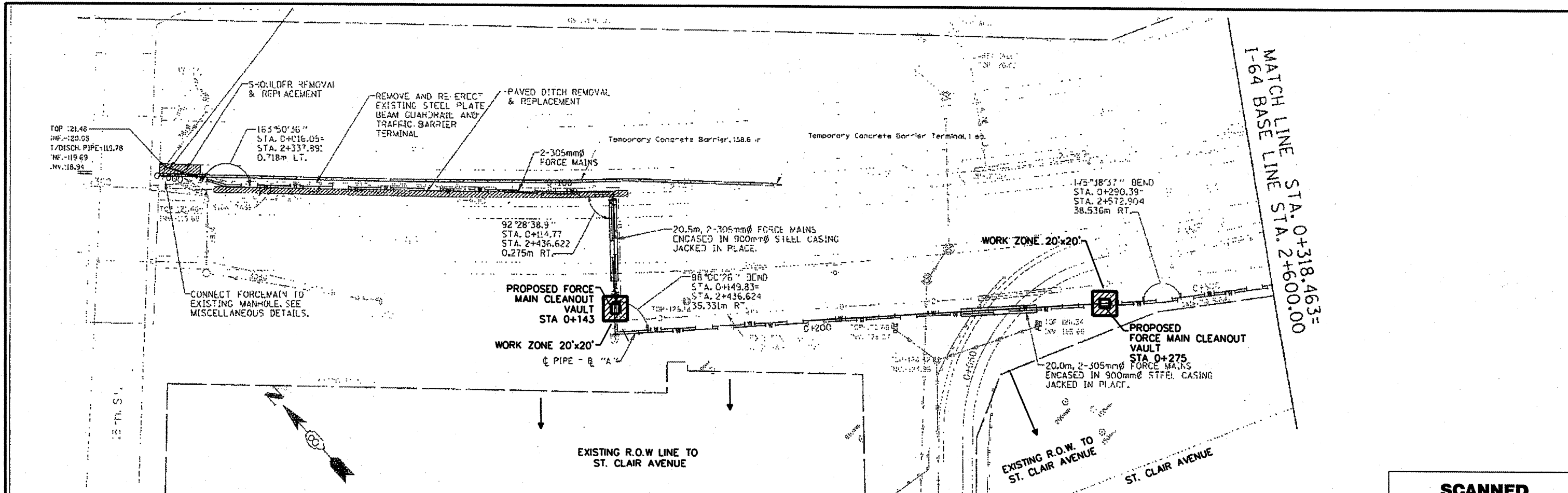
SCALE: N/A SHEET NO. 3 OF -- SHEETS STA. _____ TO STA. _____

F.A.P. RTE.	SECTION	COUNTY	TOTAL SHEETS	SHEET NO.
VARIOUS	DIST 8 DEEP WELLS 2010-2	ST. CLAIR	20	3
ILLINOIS FED. AID PROJECT			CONTRACT NO. 76D62	

SCHEDULE OF QUANTITIES																		
LOCATION	APPROX LENGTH (FOOT) WIDTH (FOOT)		SEEDING CL 2 (ACRE)	NITROGEN FERT NUTR (POUND)	PHOSPHOROUS FERT NUTR (POUND)	POTASSIUM FERT NUTR (POUND)	MULCH METHOD 2 (ACRE)	PERIMETER EROS BAR (FOOT)	FORCE MAIN CLEANOUT VAULT				LOCATING DEEP WELL FORCE MAIN (FOOT)	CHAIN LINK FENCE (FOOT)	LOCATING UNDERGROUND CABLE, SPECIAL (EACH)	NON-SPECIAL WASTE DISPOSAL (CY)	TRENCH BACKFILL (CY)	
									(EACH)									
									7'-4" X 6'-4"	8'-0" X 7'-0"	9'-4" X 6'-4"	10'-0" X 7'-0"						
25TH STREET																		
STATION 0+143	20	20	0.01	0.90	0.90	0.90	0.01	80			1			10	20	0	51	30
STATION 0+275	20	20	0.01	0.90	0.90	0.90	0.01	80			1			10		0	63	36
STATION 0+362	20	20	0.01	0.90	0.90	0.90	0.01	80			1			10	20	0	46	27
STATION 0+485	20	20	0.01	0.90	0.90	0.90	0.01	80	1					10		0	26	15
STATION 0+610	20	20	0.01	0.90	0.90	0.90	0.01	80	1					10	20	0	26	15
STATION 0+715	20	20	0.01	0.90	0.90	0.90	0.01	80		1				10		0	40	23
STATION 0+895	20	20	0.01	0.90	0.90	0.90	0.01	80	1					10	20	0	33	20
STATION 1+017	20	20	0.01	0.90	0.90	0.90	0.01	80		1				10		0	43	24
STATION 1+160	20	20	0.01	0.90	0.90	0.90	0.01	80	1					10	20	0	31	19
STATION 1+280	20	20	0.01	0.90	0.90	0.90	0.01	80	1					10	20	0	27	16
25TH STREET TOTALS			0.10	9.00	9.00	9.00	0.10	800.0	5	5	0	0		100	120	0	386	225
MISSOURI AVENUE																		
STATION 0+225	20	20	0.01	0.90	0.90	0.90	0.01	80				1		10		1	51	28
STATION 0+335	20	20	0.01	0.90	0.90	0.90	0.01	80				1		10		1	47	26
STATION 0+461	20	20	0.01	0.90	0.90	0.90	0.01	80				1		10		1	29	16
STATION 0+583	20	20	0.01	0.90	0.90	0.90	0.01	80			1			10		1	34	19
STATION 0+705	20	20	0.01	0.90	0.90	0.90	0.01	80			1			10		1	38	22
STATION 0+815	20	20	0.01	0.90	0.90	0.90	0.01	80				1		10		1	54	30
STATION 0+935	20	20	0.01	0.90	0.90	0.90	0.01	80				1		10		1	58	32
STATION 1+060	20	20	0.01	0.90	0.90	0.90	0.01	80				1		10		1	64	35
STATION 1+156	20	20	0.01	0.90	0.90	0.90	0.01	80				1		10		1	65	35
STATION 1+278	20	20	0.01	0.90	0.90	0.90	0.01	80				1		10		1	48	26
STATION 1+400	20	20	0.01	0.90	0.90	0.90	0.01	80				1		10		1	71	39
MISSOURI AVENUE TOTALS			0.11	9.90	9.90	9.90	0.11	880.0	0	0	3	8		110	0	11	559	308
PROJECT TOTALS			*0.25	22.50	22.50	22.50	0.25	1680.0			21			210	**120	11	945	533

* Used 0.25 acre minimum seeding. Related items adjusted accordingly.
 **Chain link fence estimated at locations anticipated to be required.

FILE NAME =	USER NAME = #USER#	DESIGNED - EJC	REVISED -	STATE OF ILLINOIS DEPARTMENT OF TRANSPORTATION	SCHEDULE OF QUANTITIES CLEANOUT INSTALLATION 25TH STREET & MISSOURI AVENUE	F.A.P. RTE.	SECTION	COUNTY	TOTAL SHEETS	SHEET NO.	
#FILE#		DRAWN - JLA	REVISED -			VARIOUS	DIST 8 DEEP WELLS 2010-2	ST. CLAIR	20	4	
	PLOT SCALE = #SCALE#	CHECKED - EEA	REVISED -			SCALE: N/A		SHEET NO. 4 OF -- SHEETS		STA. _____ TO STA. _____	
	PLOT DATE = #DATE#	DATE - 05/06/10	REVISED -			ILLINOIS FED. AID PROJECT					
CONTRACT NO. 76D62											



**SCANNED
HISTORIC PLANS**

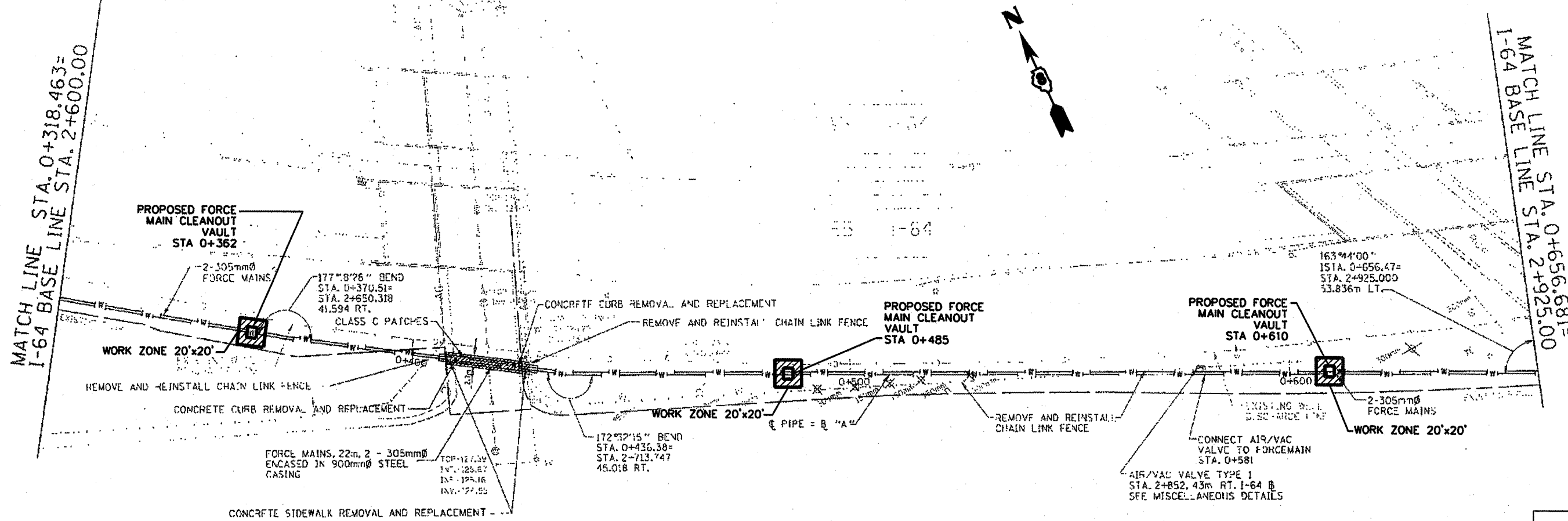
FILE NAME * #FILE#	USER NAME * #USER#	DESIGNED - EJC	REVISED -
		DRAWN - J.A.	REVISED -
PLOT SCALE * #SCALE#		CHECKED - EEA	REVISED -
PLOT DATE * #DATE#		DATE - 05/06/10	REVISED -

STATE OF ILLINOIS
DEPARTMENT OF TRANSPORTATION

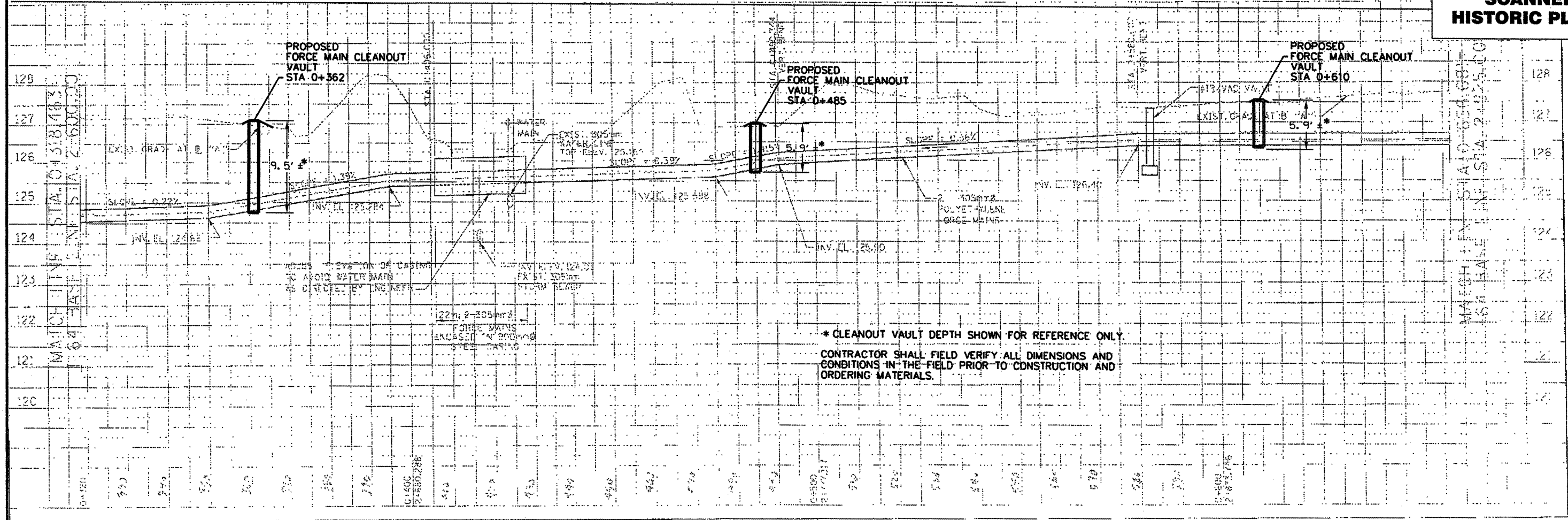
**PLAN AND PROFILE
CLEANOUT INSTALLATION 25TH STREET**

SCALE: 500 H / 50 V SHEET NO. 5 OF .. SHEETS STA. 0+000 TO STA. 0+318.463

F.A.P. RTE.	SECTION	COUNTY	TOTAL SHEETS	SHEET NO.
VARIOUS/DIST 8 DEEP WELLS 2000-2		ST. CLAIR	20	5
CONTRACT NO. 76062			ILLINOIS FED. AID PROJECT	



**SCANNED
HISTORIC PLANS**



* CLEANOUT VAULT DEPTH SHOWN FOR REFERENCE ONLY.
CONTRACTOR SHALL FIELD VERIFY ALL DIMENSIONS AND
CONDITIONS IN THE FIELD PRIOR TO CONSTRUCTION AND
ORDERING MATERIALS.

FILE NAME	USER NAME	DESIGNED	REVISED
#FILE#	#USER#	EJC	
		DRAWN	REVISED
		JJA	
		CHECKED	REVISED
		EEA	
		DATE	REVISED
		05/06/10	

STATE OF ILLINOIS
DEPARTMENT OF TRANSPORTATION

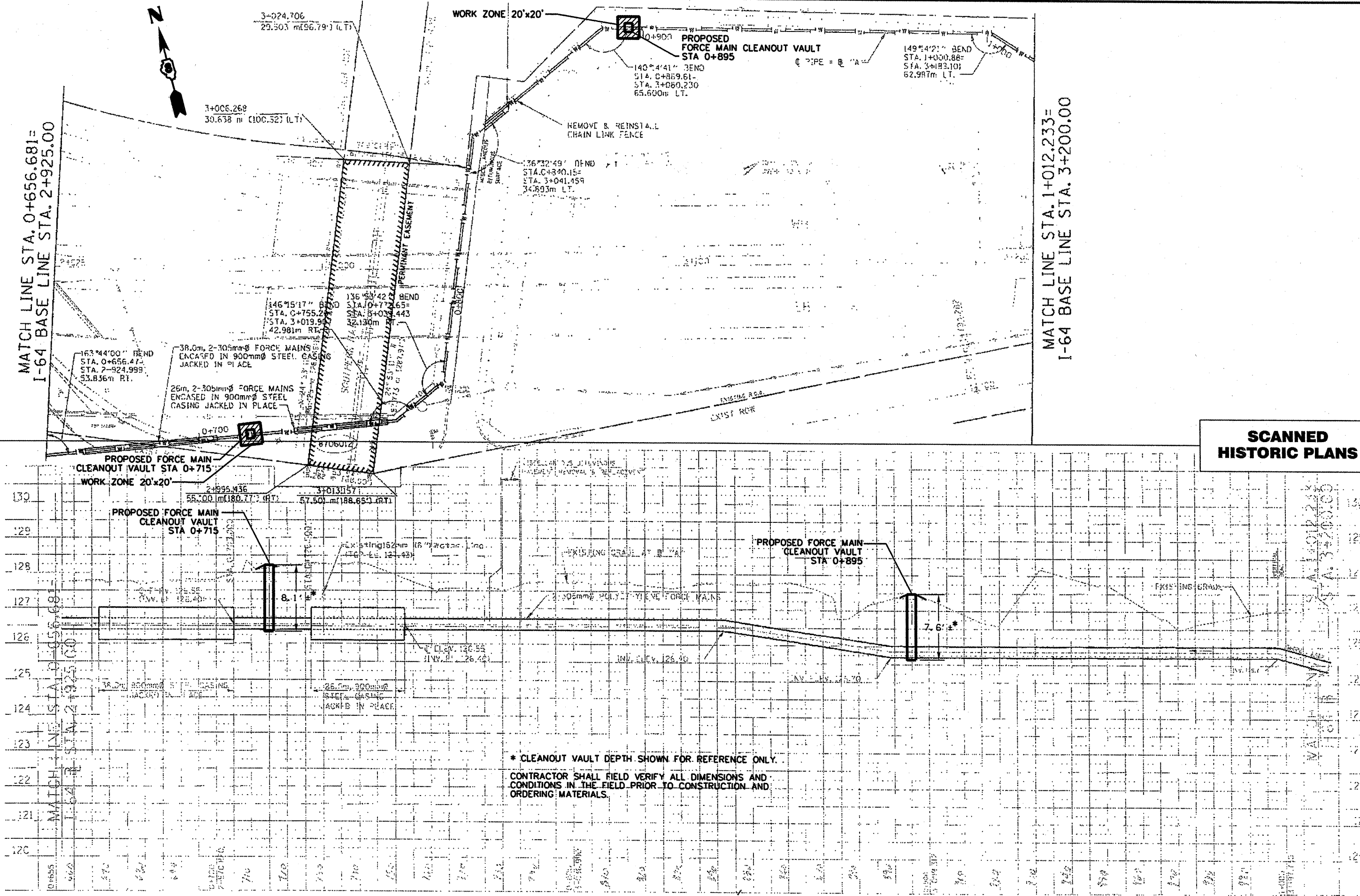
**PLAN AND PROFILE
CLEANOUT INSTALLATION 25TH STREET**
SCALE: 500 H / 50 V SHEET NO. 6 OF ... SHEETS STA. 0+38,463 TO STA. 0+656,681

F.A.P. RTE.	SECTION	COUNTY	TOTAL SHEETS	SHEET NO.
VARIOUS/DIST 8 DEEP WELLS 2010-2	ST. CLAIR	ILLINOIS	20	6
CONTRACT NO. T6062				

**SCANNED
HISTORIC PLANS**

MATCH LINE STA. 0+656.681=
I-64 BASE LINE STA. 2+925.00

MATCH LINE STA. 1+012.233=
I-64 BASE LINE STA. 3+200.00



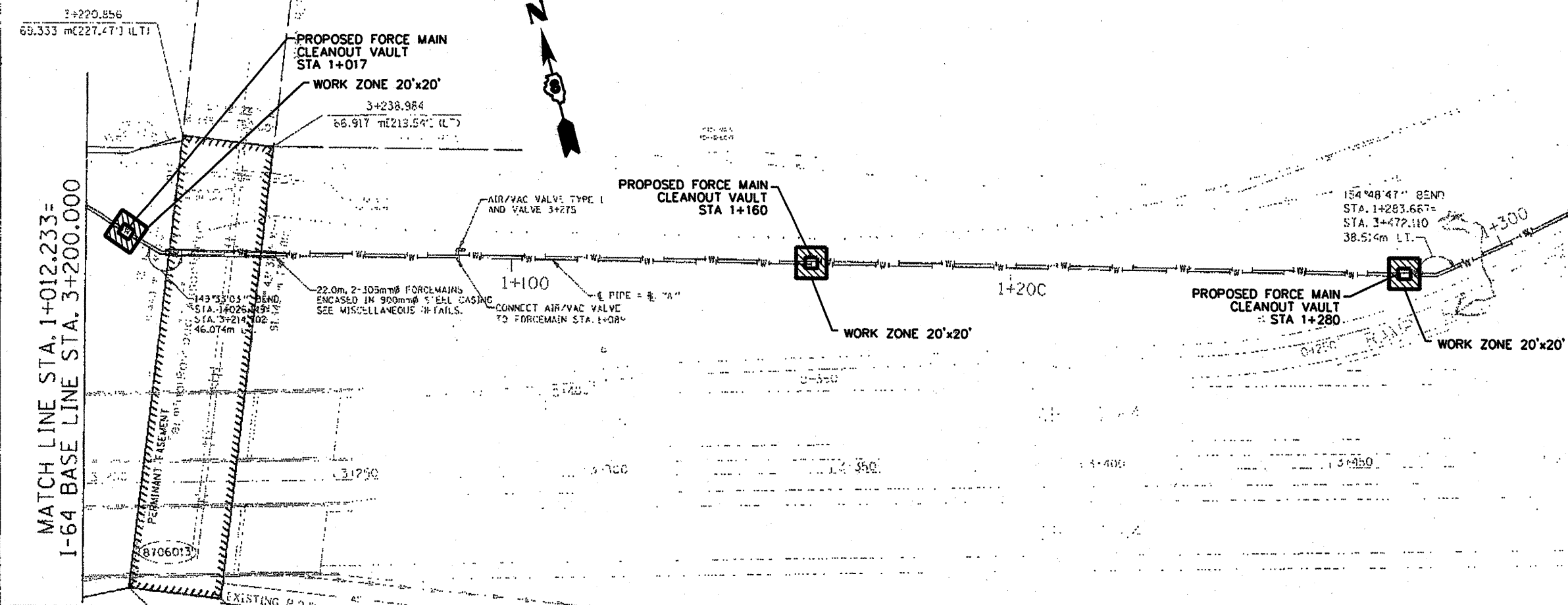
FILE NAME #FILE#	USER NAME #USER#	DESIGNED EJC	REVISED
		DRAWN JLA	REVISED
		CHECKED EEA	REVISED
		DATE 05/06/10	REVISED

USER NAME #USER#	DESIGNED EJC	REVISED
	DRAWN JLA	REVISED
	CHECKED EEA	REVISED
	DATE 05/06/10	REVISED

STATE OF ILLINOIS
DEPARTMENT OF TRANSPORTATION

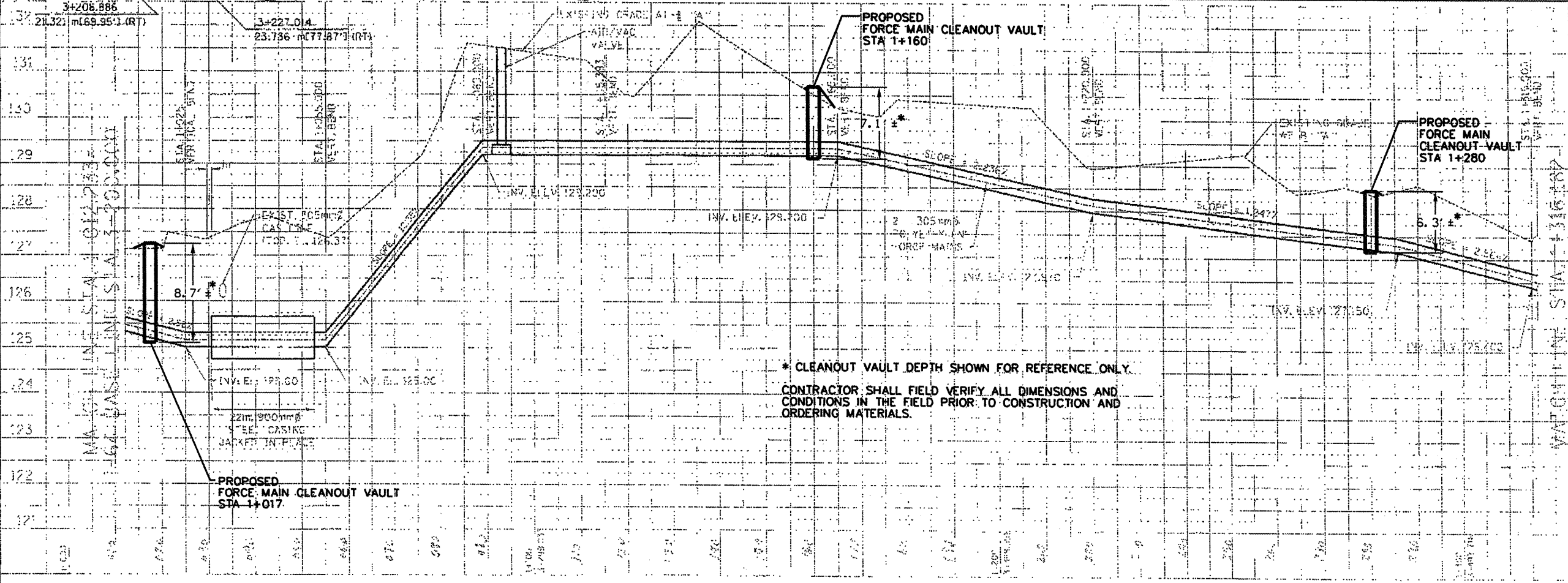
**PLAN AND PROFILE
CLEANOUT INSTALLATION 25TH STREET**
SCALE: 500 H / 50 V SHEET NO. 7 OF .. SHEETS STA. 0+656.681 TO STA. 1+012.233

F.A.P. RTE.	SECTION	COUNTY	TOTAL SHEETS	SHEET NO.
VARROUS DIST B DEEP WELLS 200-2	ST. CLAR		20	7
CONTRACT NO. 76062				
ILLINOIS FED. AID PROJECT				



MATCH LINE STA. 1+012.233=
I-64 BASE LINE STA. 3+200.000

MATCH LINE STA. 1+313.74=
I-64 BASE LINE STA. 3+500.000



SCANNED HISTORIC PLANS

131	
130	
129	
128	
127	
126	
125	
124	
123	
122	
121	

FILE NAME * #FILE#	USER NAME * #USER#	DESIGNED - EJC	REVISED -
		DRAWN - JJA	REVISED -
		CHECKED - EEA	REVISED -
		DATE - 05/06/10	REVISED -

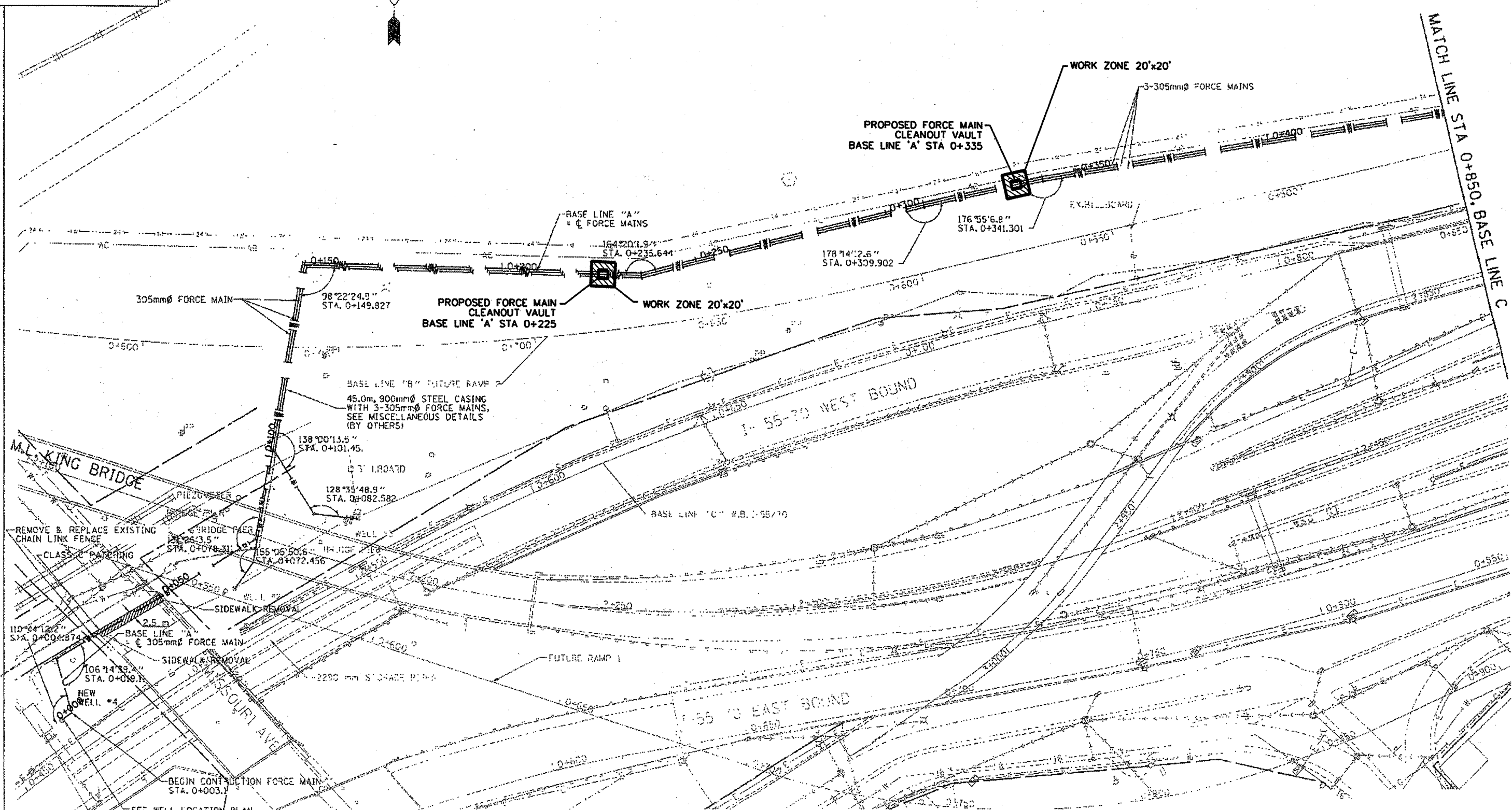
STATE OF ILLINOIS
DEPARTMENT OF TRANSPORTATION

**PLAN AND PROFILE
CLEANOUT INSTALLATION 25TH STREET**

SCALE: 500 H / 50 V SHEET NO. 8 OF ... SHEETS STA. 1+012.233 TO STA. 1+313.74

F.A.P. RTE.	SECTION	COUNTY	TOTAL SHEETS	SHEET NO.
VARIOUS/DIST 8 DEEP WELLS 2000-2	ST. CLAIR	20	8	
CONTRACT NO. 76D62				
ILLINOIS FED. AID PROJECT				

**SCANNED
HISTORIC PLANS**

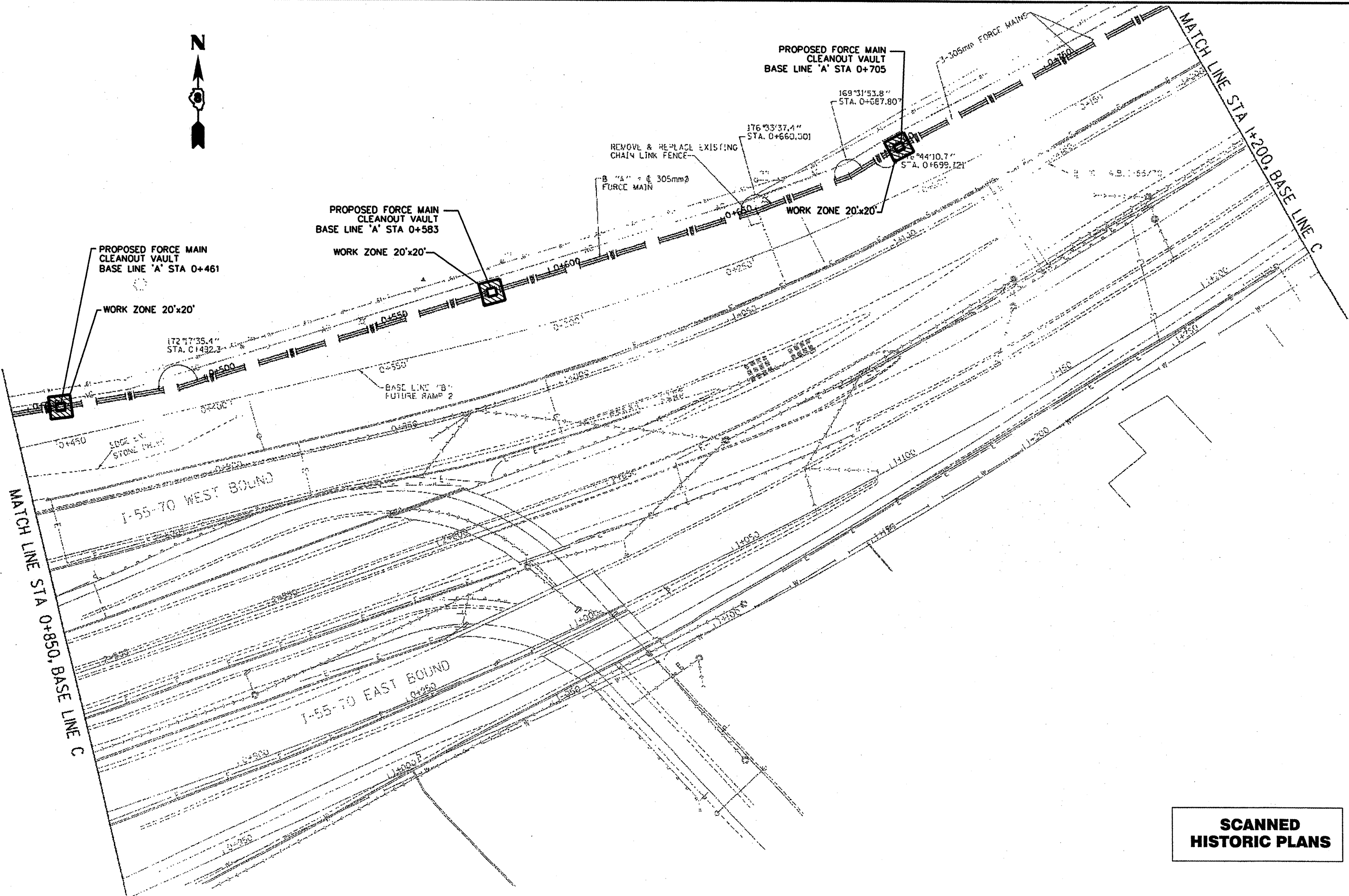


FILE NAME	USER NAME	DESIGNED	REVISED
#FILE#	#USER#	EJC	---
		DRAWN	REVISED
		J.A.	---
		CHECKED	REVISED
		E.A.	---
		DATE	REVISED
		05/06/10	---

STATE OF ILLINOIS
DEPARTMENT OF TRANSPORTATION

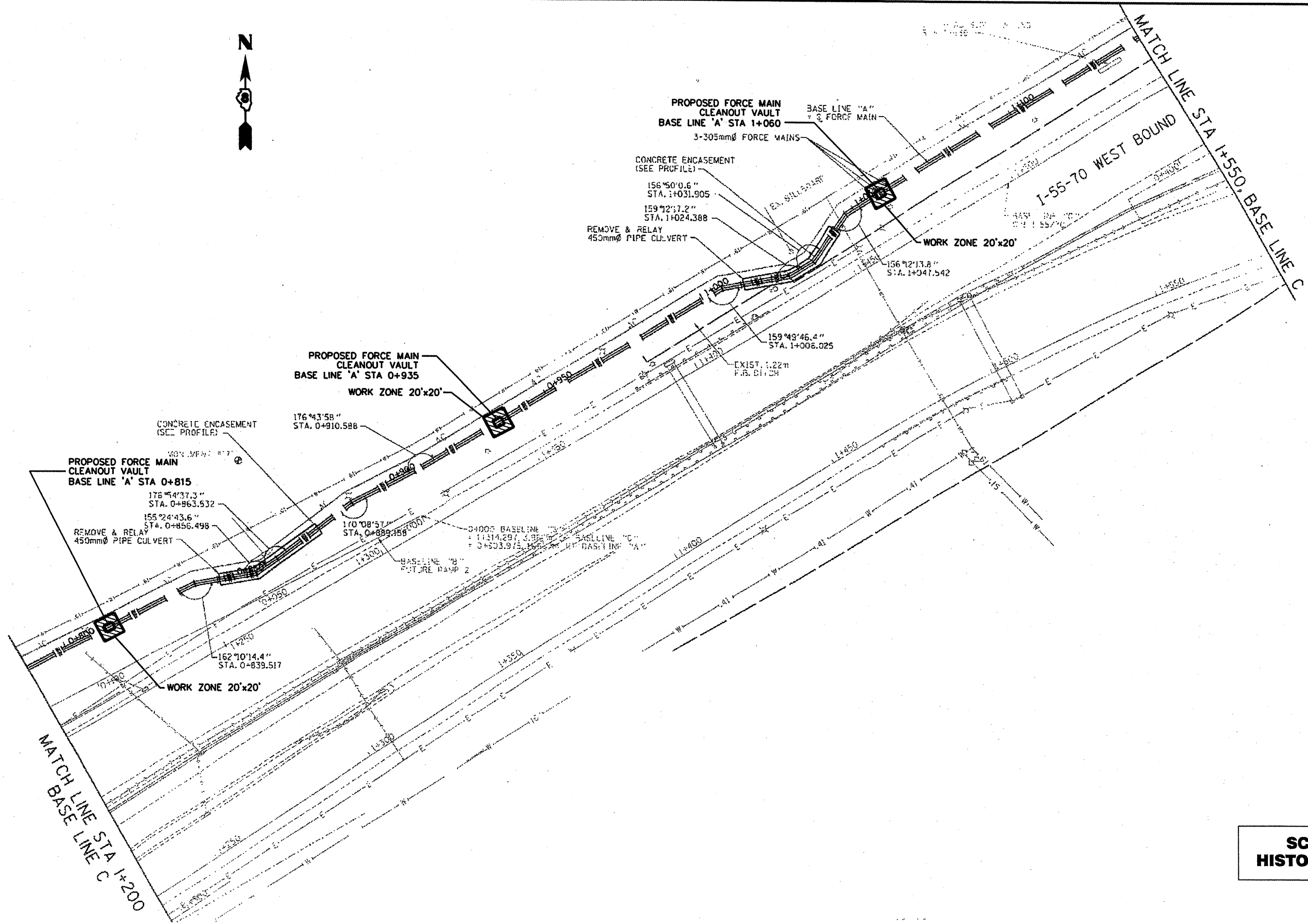
PLAN
CLEANOUT INSTALLATION MISSOURI AVENUE
SCALE: 500 H / 50 V SHEET NO. 9 OF ... SHEETS STA. 0+000 TO STA. 0+850

F.A.P. RTE.	SECTION	COUNTY	TOTAL SHEETS	SHEET NO.
VARIOUS DIST 8 DEEP WELLS 2010-2	ST. CLAIR	20	9	
CONTRACT NO. 76062				
ILLINOIS FED. AID PROJECT				



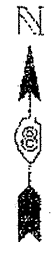
**SCANNED
HISTORIC PLANS**

FILE NAME *	USER NAME * #USER#	DESIGNED - EJC	REVISED -	STATE OF ILLINOIS DEPARTMENT OF TRANSPORTATION	PLAN CLEANOUT INSTALLATION MISSOURI AVENUE	F.A.P. RTE.	SECTION	COUNTY	TOTAL SHEETS	SHEET NO.
#FILE#		DRAWN - J.A	REVISED -			VARIOUS/DIST B DEEP WELLS 20D-2	ST. CLAR	2D	10	
PLOT SCALE * #SCALE#		CHECKED - EEA	REVISED -			CONTRACT NO. 76062				
PLOT DATE * #DATE#		DATE - 05/06/10	REVISED -			ILLINOIS FED. AID PROJECT				
				SCALE: 500 H / 50 V	SHEET NO. 10 OF .. SHEETS	STA. 0+850 TO STA. 1+200				



**SCANNED
HISTORIC PLANS**

FILE NAME =	USER NAME = #USER#	DESIGNED = EJC	REVISED =	STATE OF ILLINOIS DEPARTMENT OF TRANSPORTATION	PLAN CLEANOUT INSTALLATION MISSOURI AVENUE	F.A.P. RTE.	SECTION	COUNTY	TOTAL SHEETS	SHEET NO.
#FILE#		DRAWN = JLA	REVISED =		SCALE: 500 H / 50 V SHEET NO. # OF ... SHEETS	VARIOUS	DIST 8 DEEP WELLS 2010-2	ST. CLAIR	20	#
		CHECKED = EEA	REVISED =		STA. 1+200 TO STA. 1+550					
		DATE = 05/06/10	REVISED =							
										CONTRACT NO. 76062
										ILLINOIS FED. AID PROJECT



WORK ZONE 20'x20'
PROPOSED FORCE MAIN
CLEANOUT VAULT
BASE LINE 'A' STA 1+400

BASELINE "A" = C
305mm FORCE MAIN

WORK ZONE 20'x20'
PROPOSED FORCE MAIN
CLEANOUT VAULT
BASE LINE 'A' STA 1+278

3-305mm FORCE MAINS

PROPOSED FORCE MAIN
CLEANOUT VAULT
BASE LINE 'A' STA 1+156

MONUMENT #1720

165'12'44.9" STA. 1+202.290

159'43'15.8" STA. 1+195.064

164'11'10.4" STA. 1+216.128

CONCRETE ENCASEMENT
(SEE PROFILE)

160'19'49.5" STA. 1+181.769

WORK ZONE 20'x20'

I-55-70 WEST BOUND

I-55-70 EAST BOUND

MATCH LINE STA 1+850. BASE LINE C

MATCH LINE STA 1+550. BASE LINE C

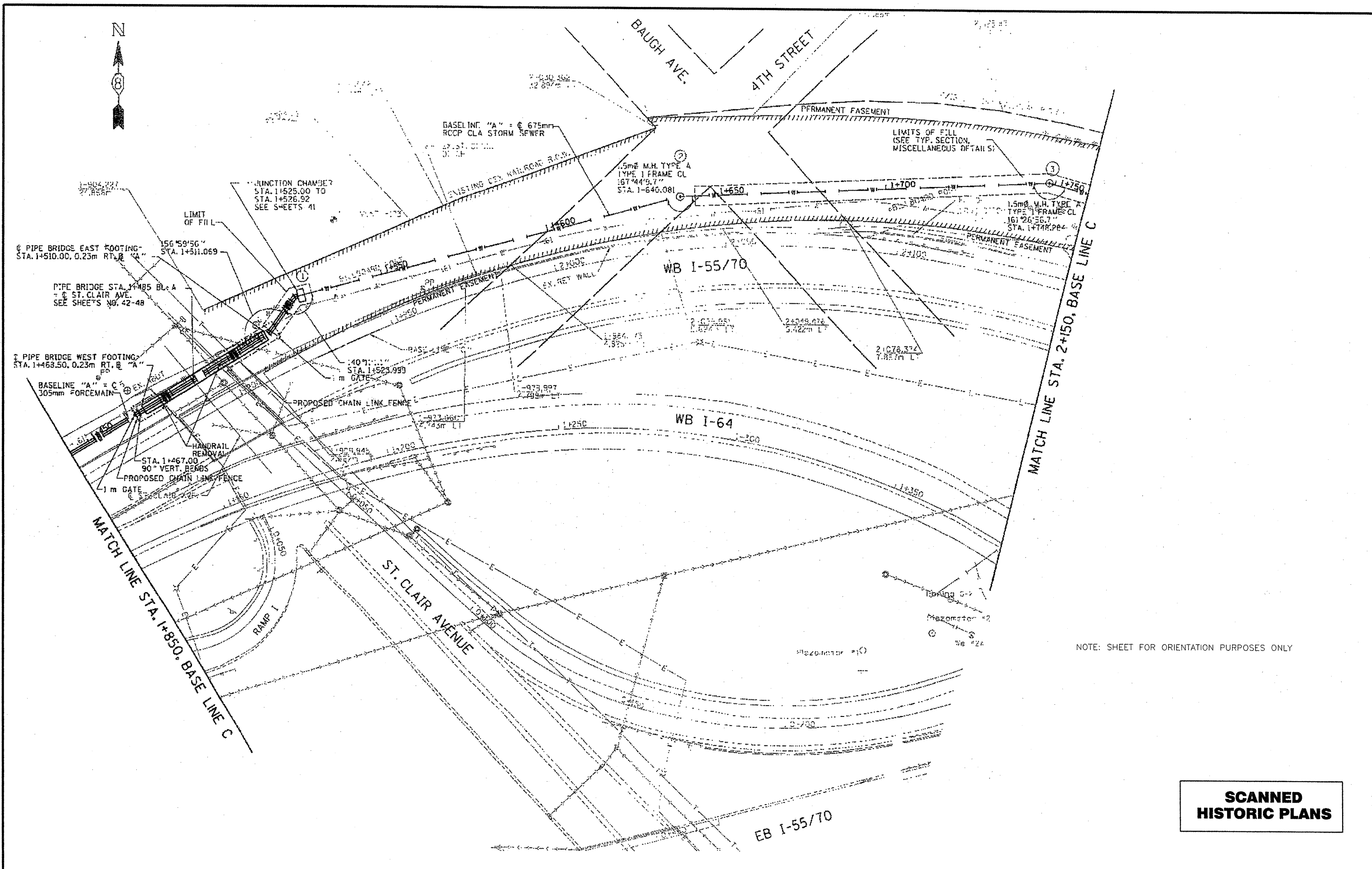
**SCANNED
HISTORIC PLANS**

FILE NAME *	USER NAME * #USER#	DESIGNED - EJC	REVISED -
#FILE#		DRAWN - JLA	REVISED -
		CHECKED - EEA	REVISED -
		DATE - 05/06/10	REVISED -

STATE OF ILLINOIS
DEPARTMENT OF TRANSPORTATION

PLAN
CLEANOUT INSTALLATION MISSOURI AVENUE
SCALE: 500 H / 50 V SHEET NO. 12 OF .. SHEETS STA. 1+550 TO STA. 1+850

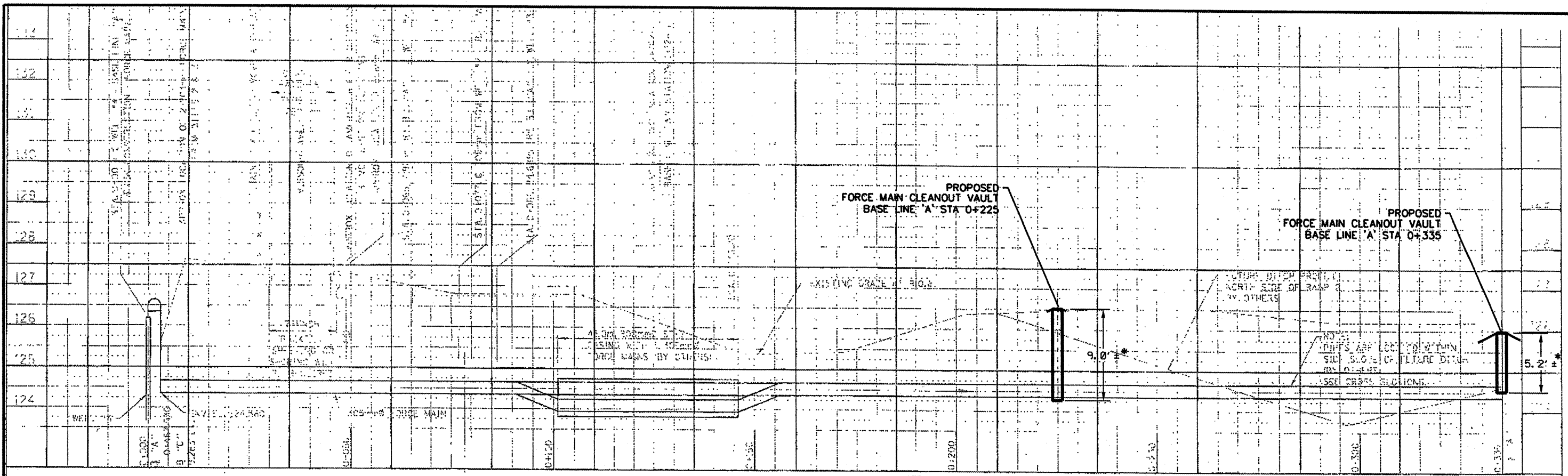
F.A.P. RTE.	SECTION	COUNTY	TOTAL SHEETS	SHEET NO.
VARIOUS DIST 8 DEEP WELLS 200-2		ST. CLAR	20	12
CONTRACT NO. 76062			ILLINOIS FED. RD PROJECT	



NOTE: SHEET FOR ORIENTATION PURPOSES ONLY

**SCANNED
HISTORIC PLANS**

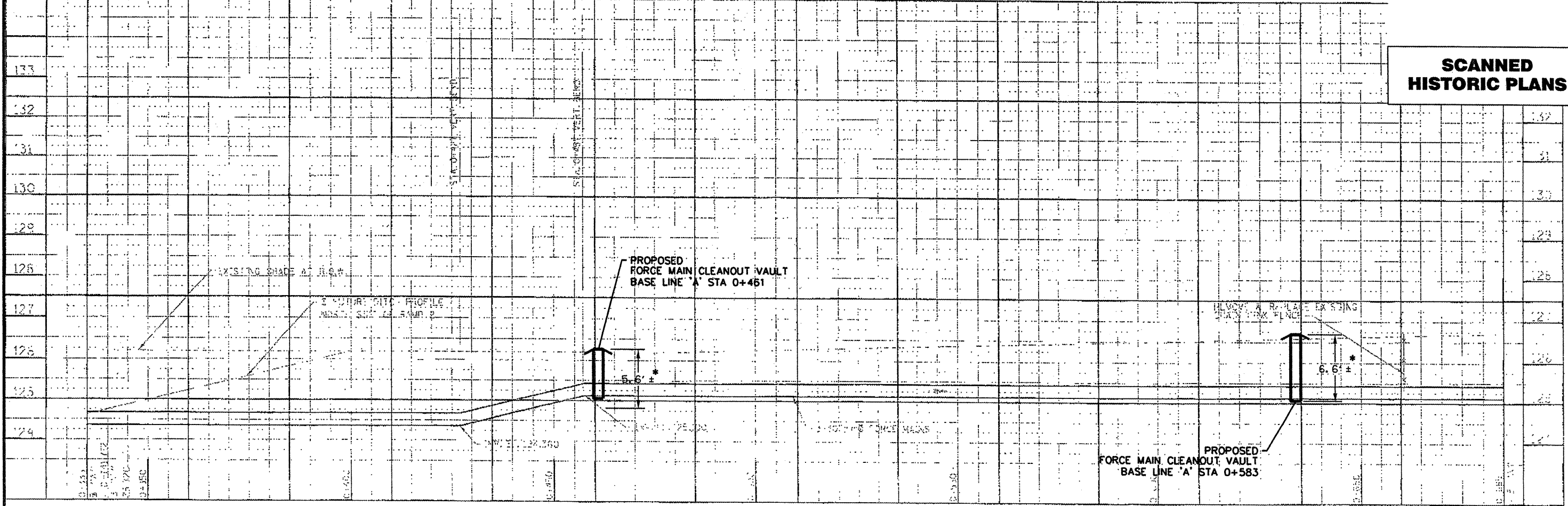
FILE NAME	USER NAME	DESIGNED	REVISED	STATE OF ILLINOIS DEPARTMENT OF TRANSPORTATION	PLAN CLEANOUT INSTALLATION MISSOURI AVENUE	F.A.P. RTE.	SECTION	COUNTY	TOTAL SHEETS	SHEET NO.	
#FILE#	#USER#	DRAWN	REVISED			VARIOUS	DIST B DEEP WELLS 2010-2	ST. CLAIR	20	13	
PLOT SCALE	#SCALE#	CHECKED	REVISED			CONTRACT NO. 76062					
PLOT DATE	#DATE#	DATE	REVISED			ILLINOIS FED. AID PROJECT					



* CLEANOUT VAULT DEPTH SHOWN FOR REFERENCE ONLY.
 CONTRACTOR SHALL FIELD VERIFY ALL DIMENSIONS AND CONDITIONS IN THE FIELD PRIOR TO CONSTRUCTION AND ORDERING MATERIALS.

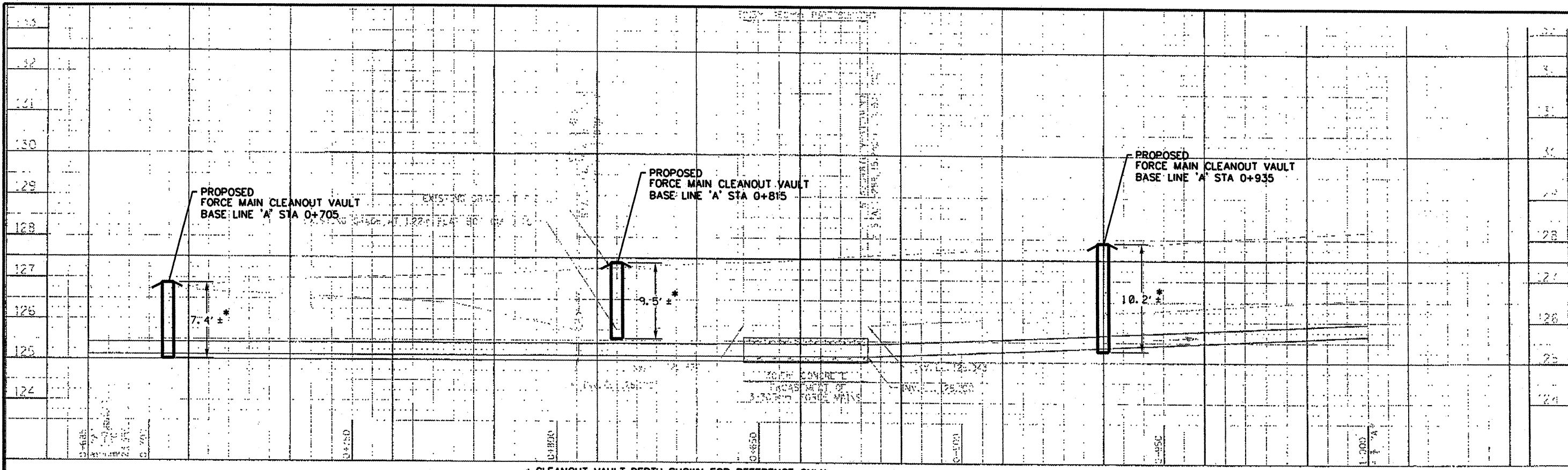
NOTE:
 FORCE MAINS ARE LOCATED IN VARIOUS AREAS OF HUB SLOPED GRADE.
 THE ON SHEETS 11, 12 & 13 HAVE INDICATED GRADE WITH R.O.V.
 SEE CROSS SECTIONS FOR GRADE COVER PIPES.

**SCANNED
 HISTORIC PLANS**

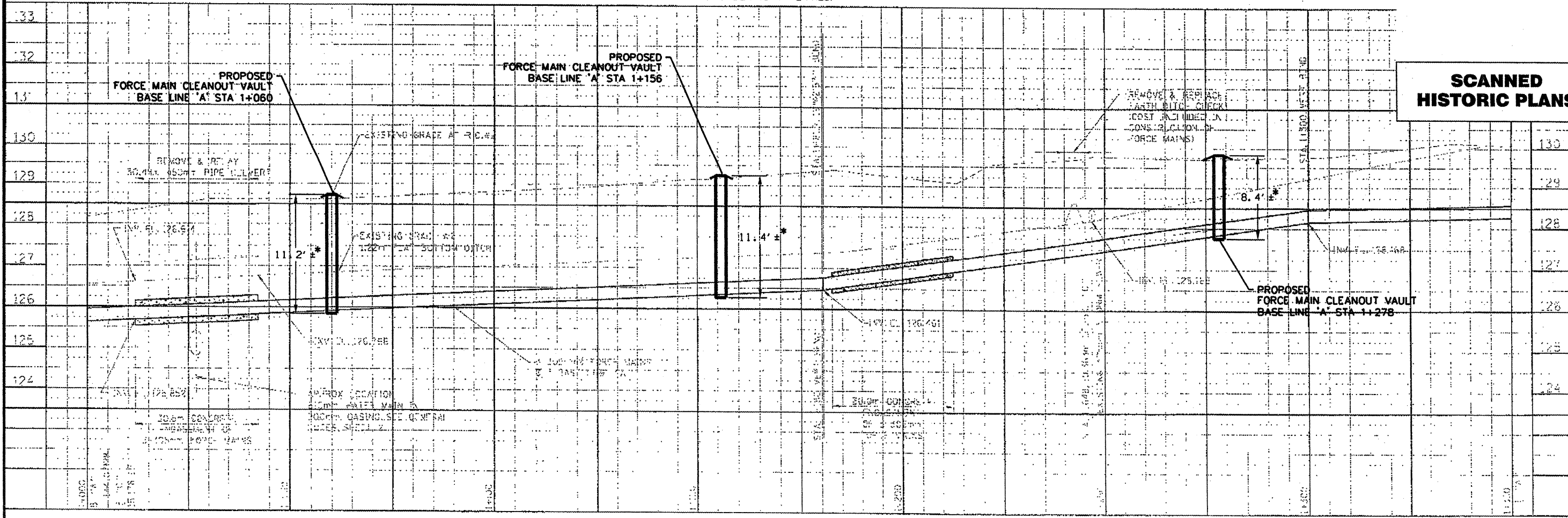


* CLEANOUT VAULT DEPTH SHOWN FOR REFERENCE ONLY.
 CONTRACTOR SHALL FIELD VERIFY ALL DIMENSIONS AND CONDITIONS IN THE FIELD PRIOR TO CONSTRUCTION AND ORDERING MATERIALS.

FILE NAME *	USER NAME * #USER#	DESIGNED - EJC	REVISED -	STATE OF ILLINOIS DEPARTMENT OF TRANSPORTATION	PROFILE CLEANOUT INSTALLATION MISSOURI AVENUE	F.A.P. RTE.	SECTION	COUNTY	TOTAL SHEETS	SHEET NO.
#FILE#		DRAWN - J.A.	REVISED -			VARIOUS/DIST 8 DEEP WELLS 200-2	ST. CLAR	20	14	
		CHECKED - EEA	REVISED -			CONTRACT NO. 76062				
		DATE - 05/06/10	REVISED -			ILLINOIS FED. AID PROJECT				
				SCALE: 500 H / 50 V SHEET NO. 4 OF 22 SHEETS		STA. 0+000 TO STA. 0+685				



* CLEANOUT VAULT DEPTH SHOWN FOR REFERENCE ONLY.
 CONTRACTOR SHALL FIELD VERIFY ALL DIMENSIONS AND CONDITIONS IN THE
 FIELD PRIOR TO CONSTRUCTION AND ORDERING MATERIALS.



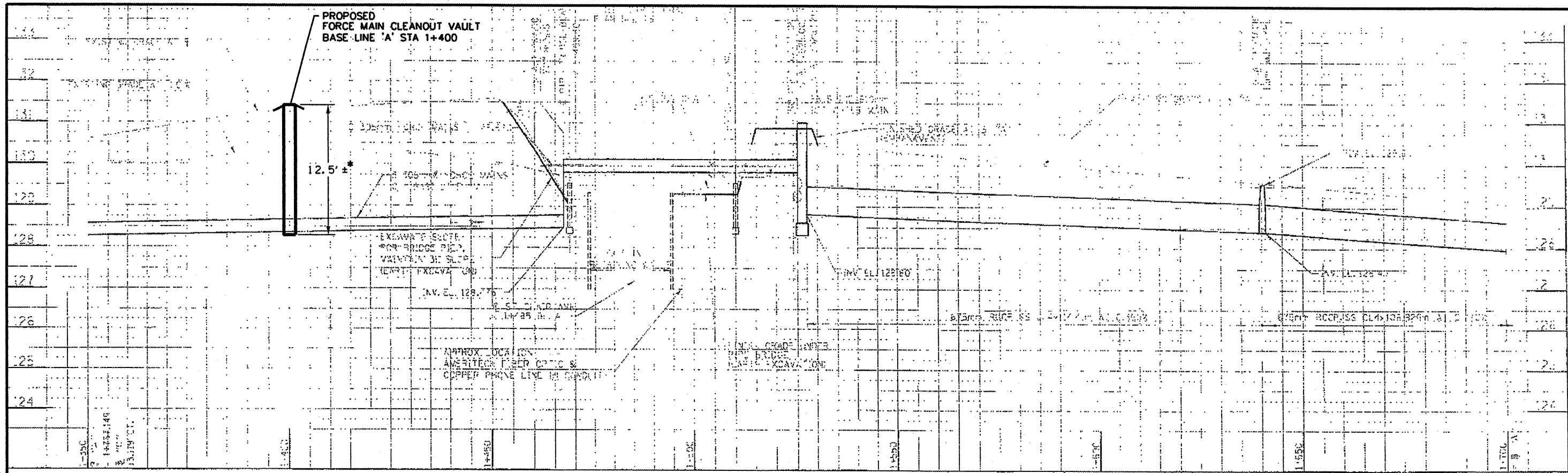
**SCANNED
 HISTORIC PLANS**

FILE NAME	USER NAME	DESIGNED	REVISED
#FILE#	#USER#	EJC	-----
		DRAWN	REVISED
		JLA	-----
		CHECKED	REVISED
		EEA	-----
		DATE	REVISED
		05/06/10	-----

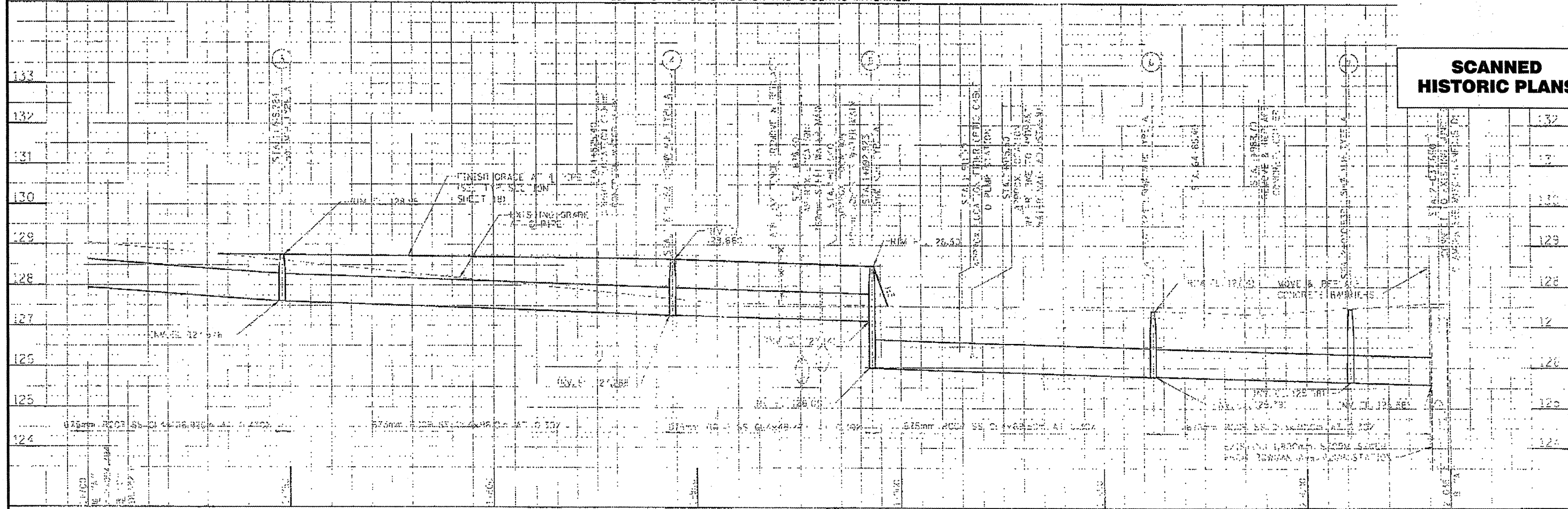
STATE OF ILLINOIS
 DEPARTMENT OF TRANSPORTATION

PROFILE
CLEANOUT INSTALLATION MISSOURI AVENUE
 SCALE: 500 H / 50 V SHEET NO. 15 OF ... SHEETS STA. 0+685 TO STA. 1+350

F.A.P. RTE.	SECTION	COUNTY	TOTAL SHEETS	SHEET NO.
VARIOUS/DIST 8 DEEP WELLS 200-2		ST. CLAIR	20	15
CONTRACT NO. 76D62				
ILLINOIS FED. AID PROJECT				



* CLEANOUT VAULT DEPTH SHOWN FOR REFERENCE ONLY.
 CONTRACTOR SHALL FIELD VERIFY ALL DIMENSIONS AND CONDITIONS IN THE FIELD PRIOR TO CONSTRUCTION AND ORDERING MATERIALS.



**SCANNED
 HISTORIC PLANS**

FILE NAME *	USER NAME * #USER*	DESIGNED - EJC	REVISED -	STATE OF ILLINOIS DEPARTMENT OF TRANSPORTATION	PROFILE CLEANOUT INSTALLATION MISSOURI AVENUE	F.A.P. RTE.	SECTION	COUNTY	TOTAL SHEETS	SHEET NO.
#FILE#		DRAWN - JLA	REVISED -			VARIOUS/DIST 8 DEEP WELLS 200-2	ST. CLAIR	20	16	
PLOT SCALE * #SCALE*		CHECKED - EEA	REVISED -			CONTRACT NO. 76062				
PLOT DATE * #DATE*		DATE - 05/06/10	REVISED -			ILLINOIS FED. AID PROJECT				

LEGEND

① 12" SS REPAIR CLAMP, 25" LENGTH

NOTES

1 BOLTS & NUTS SHALL BE 304 SS PER ASTM A193 AND A194

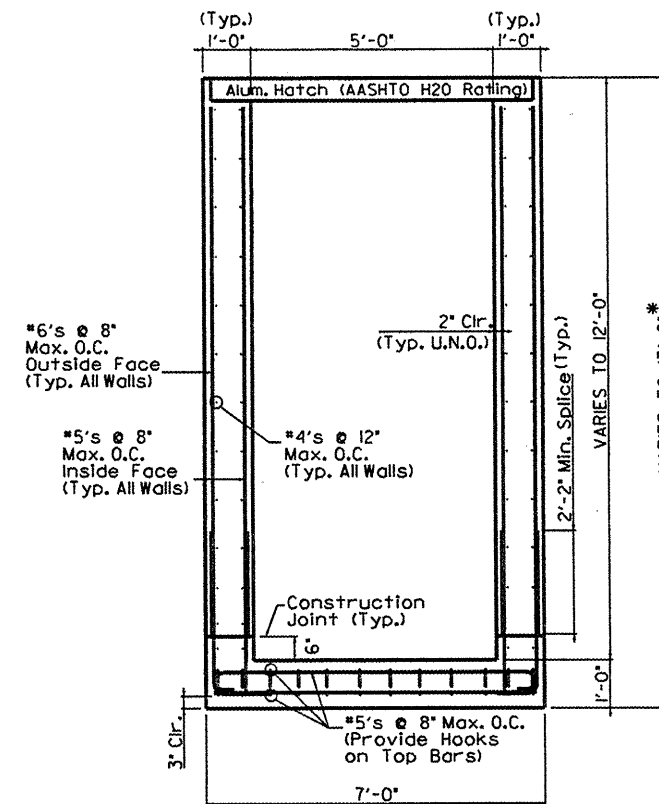
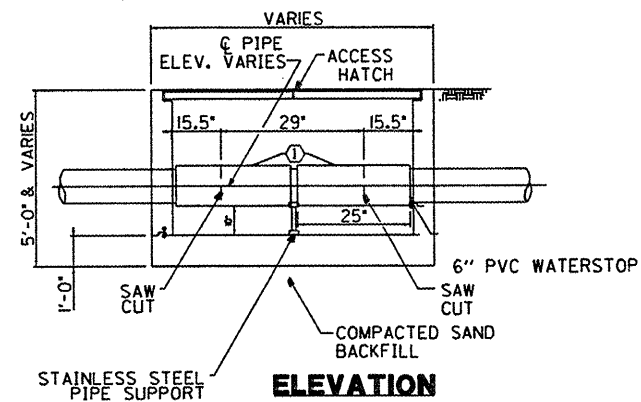
NOTES

REINFORCEMENT BARS SHALL BE ACCORDING TO SECTION 508 AND ARTICLE 1006.10 AND SHALL CONFORM TO ASTM A706, GRADE 60.

CONCRETE STRUCTURES SHALL BE ACCORDING TO SECTION 503 AND THE CLASS SHALL BE SI.

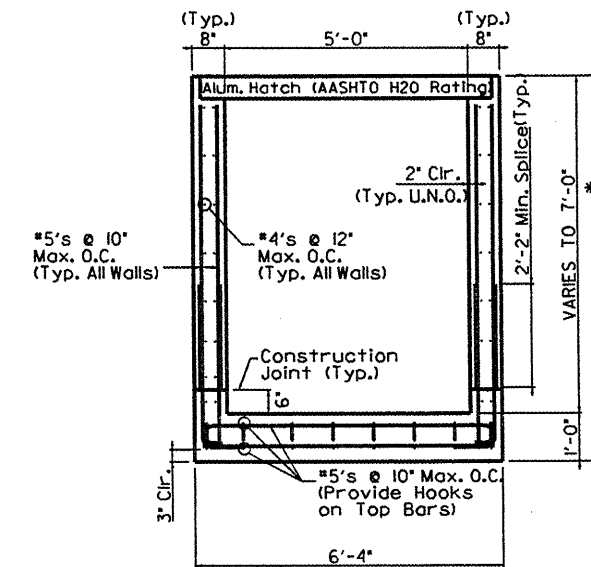
COMPACTED SAND BACKFILL SHALL BE ACCORDING TO SECTION 207.

REPAIR CLAMP AND PIPE SUPPORTS SHALL BE INCLUDED IN THE PAY ITEM CLEANOUT VAULT.



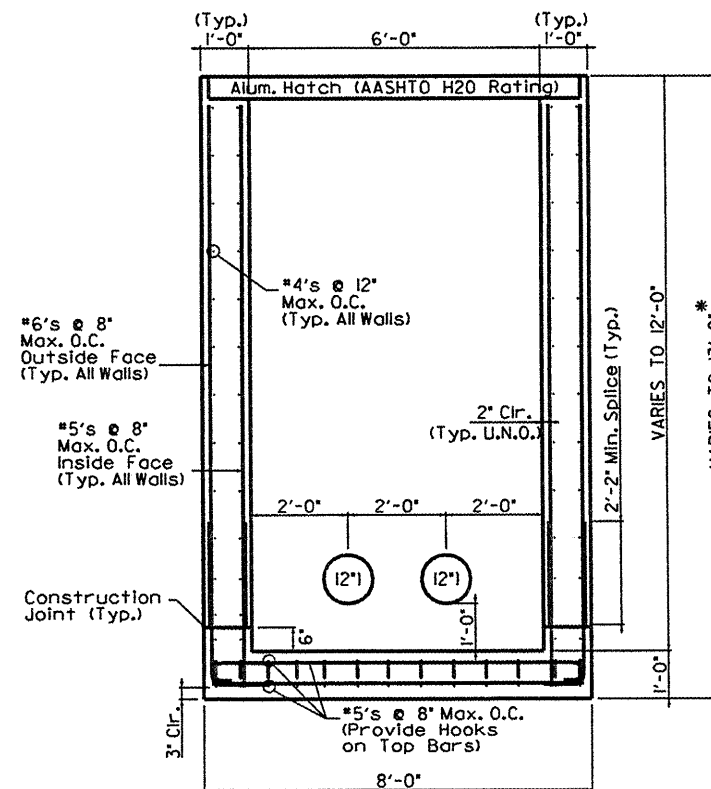
SHORT WALL ELEVATION

* MAXIMUM INSTALLATION DEPTH LIMITED TO 13'-0" FOR DESIGN REINFORCEMENT SHOWN. CONTACT STRUCTURAL ENGINEER FOR PROPOSED INSTALLATION DEPTHS GREATER THAN 13'-0".



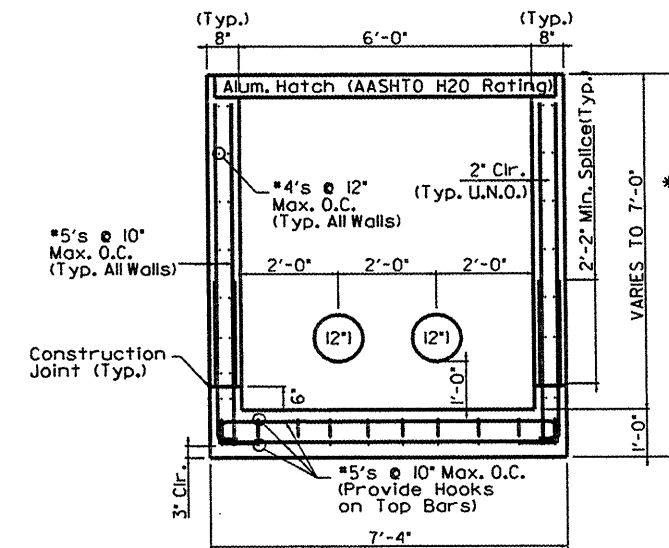
SHORT WALL ELEVATION

* MAXIMUM INSTALLATION DEPTH LIMITED TO 8'-0" FOR DESIGN REINFORCEMENT SHOWN.



LONG WALL ELEVATION

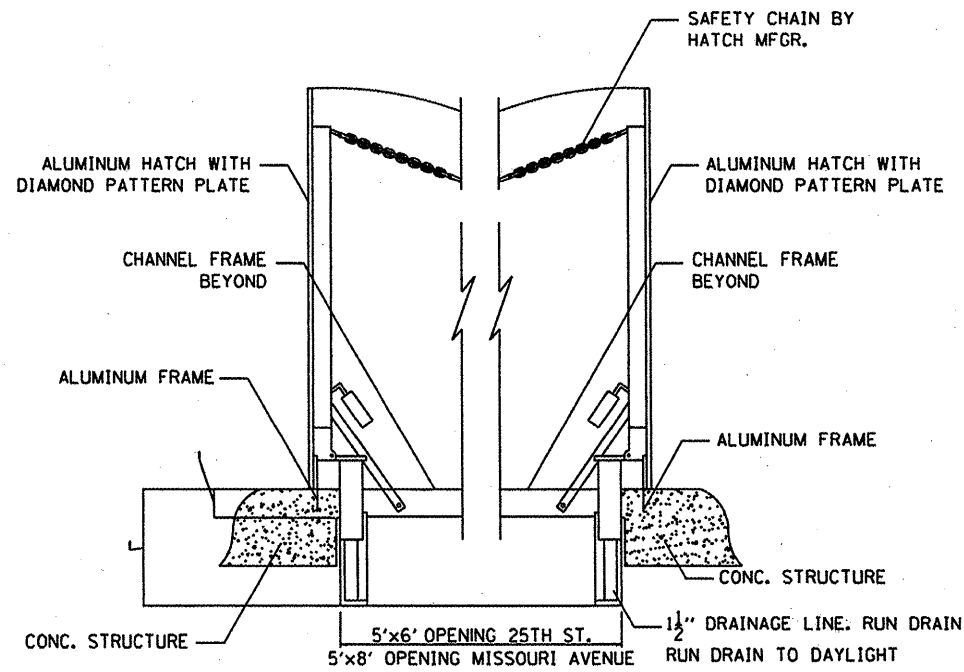
* MAXIMUM INSTALLATION DEPTH LIMITED TO 13'-0" FOR DESIGN REINFORCEMENT SHOWN. CONTACT STRUCTURAL ENGINEER FOR PROPOSED INSTALLATION DEPTHS GREATER THAN 13'-0".



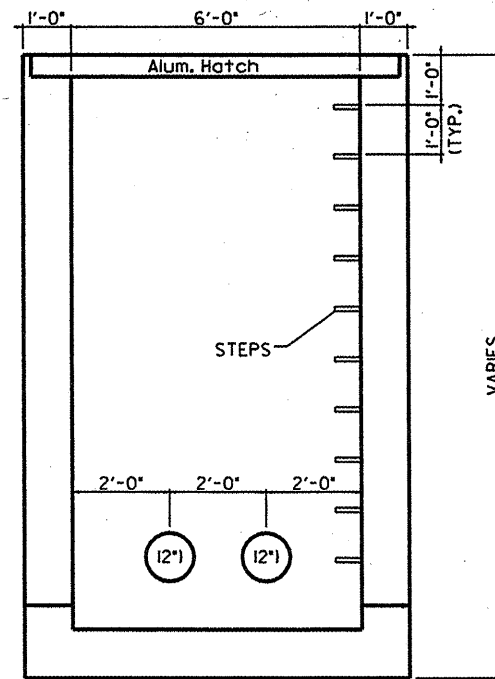
LONG WALL ELEVATION

* MAXIMUM INSTALLATION DEPTH LIMITED TO 8'-0" FOR DESIGN REINFORCEMENT SHOWN.

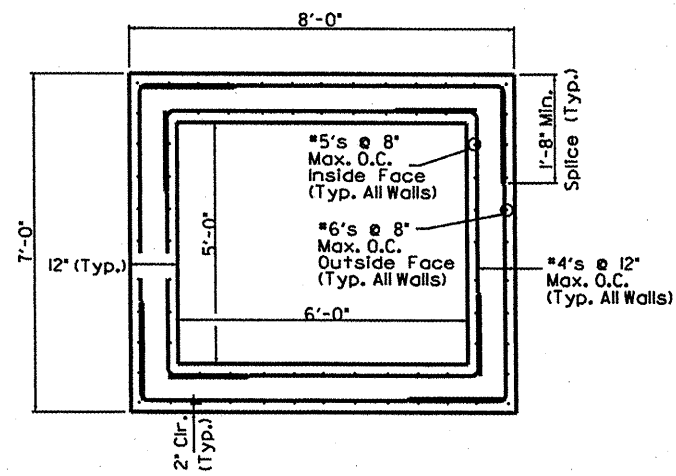
FILE NAME *	USER NAME * #USER#	DESIGNED - EJC	REVISED -	STATE OF ILLINOIS DEPARTMENT OF TRANSPORTATION	VAULT DETAILS CLEANOUT INSTALLATION 25TH STREET	F.A. RTE.	SECTION	COUNTY	TOTAL SHEETS	SHEET NO.
#FILE#	PLOT SCALE * #SCALE#	DRAWN - WPM	REVISED -			VARIOUS/DIST B DEEP WELLS 200-2	ST. CLAIR	20	17	
	PLOT DATE * #DATE#	CHECKED - EEA	REVISED -			CONTRACT NO. 76062		ILLINOIS FED. AID PROJECT		
		DATE - 05/06/10	REVISED -			SCALE: NTS	SHEET NO. 17 OF SHEETS	STA. TO STA.		



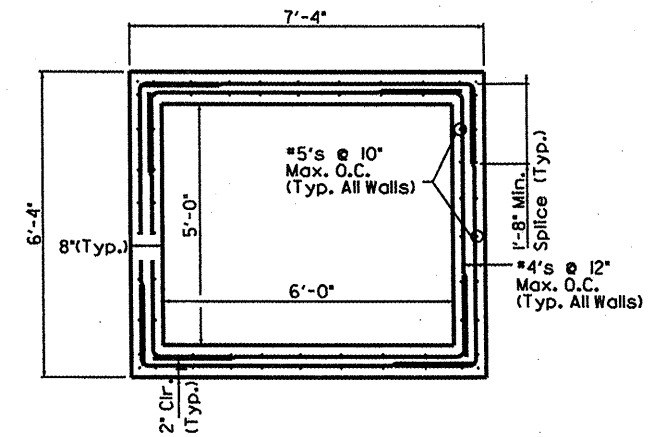
ACCESS HATCH DETAIL



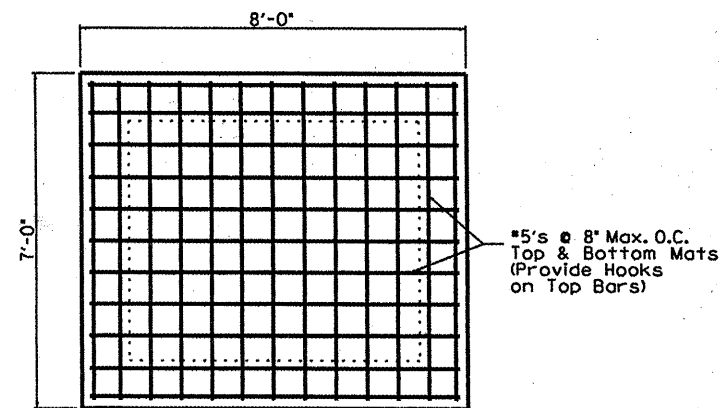
STEP DETAIL



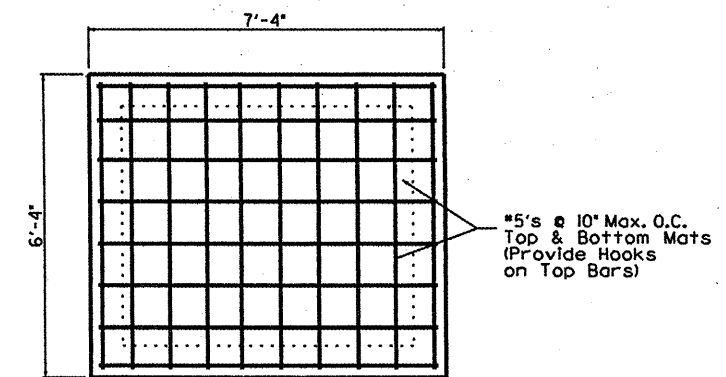
PLAN VIEW SHOWING WALL REINFORCEMENT



PLAN VIEW SHOWING WALL REINFORCEMENT



PLAN VIEW SHOWING FOOTING REINFORCEMENT



PLAN VIEW SHOWING FOOTING REINFORCEMENT

FILE NAME *	USER NAME * #USER#	DESIGNED - EJC	REVISED -
#FILE#		DRAWN - WPM	REVISED -
		CHECKED - EEA	REVISED -
		DATE - 05/06/10	REVISED -

STATE OF ILLINOIS
DEPARTMENT OF TRANSPORTATION

VAULT DETAILS
CLEANOUT INSTALLATION 25TH STREET

SCALE: NTS SHEET NO. 18 OF SHEETS STA. TO STA.

F.A. RTE.	SECTION	COUNTY	TOTAL SHEETS	SHEET NO.
VARIOUS DIST 8 DEEP WELLS 200-2		ST. CLAIR	20	18
CONTRACT NO. 76062				
ILLINOIS FED. AID PROJECT				

LEGEND

① 12" SS REPAIR CLAMP, 25" LENGTH

NOTES

1 BOLTS & NUTS SHALL BE 304 SS PER ASTM A193 AND A194

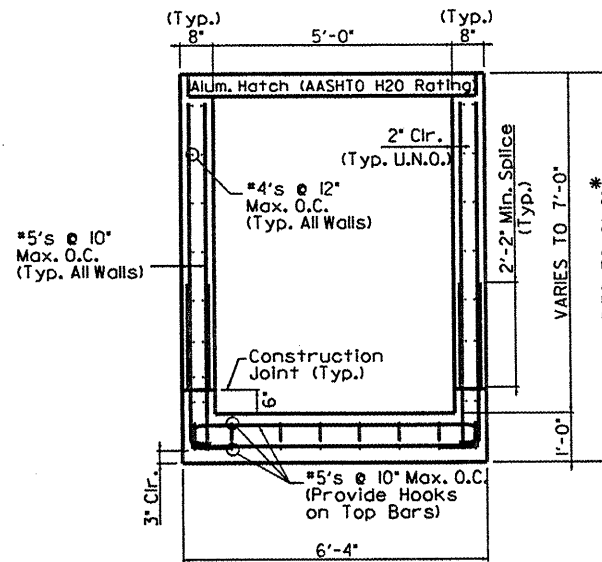
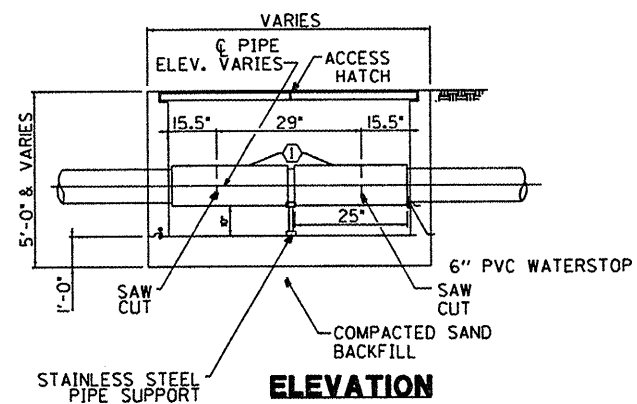
NOTES

REINFORCEMENT BARS SHALL BE ACCORDING TO SECTION 508 AND ARTICLE 1006.10 AND SHALL CONFORM TO ASTM A706, GRADE 60.

CONCRETE STRUCTURES SHALL BE ACCORDING TO SECTION 503 AND THE CLASS SHALL BE SI.

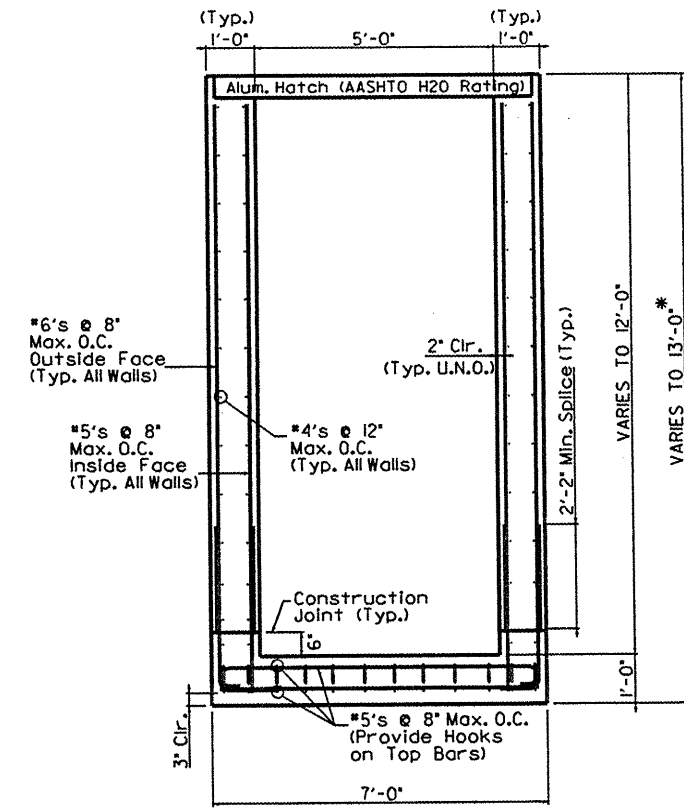
COMPACTED SAND BACKFILL SHALL BE ACCORDING TO SECTION 207.

REPAIR CLAMP AND PIPE SUPPORTS SHALL BE INCLUDED IN THE PAY ITEM CLEANOUT VAULT.



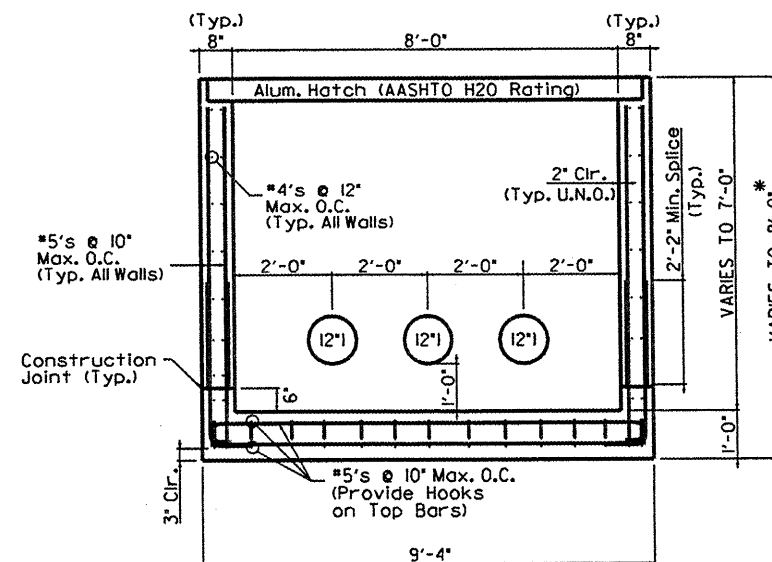
SHORT WALL ELEVATION

* MAXIMUM INSTALLATION DEPTH LIMITED TO 8'-0" FOR DESIGN REINFORCEMENT SHOWN.



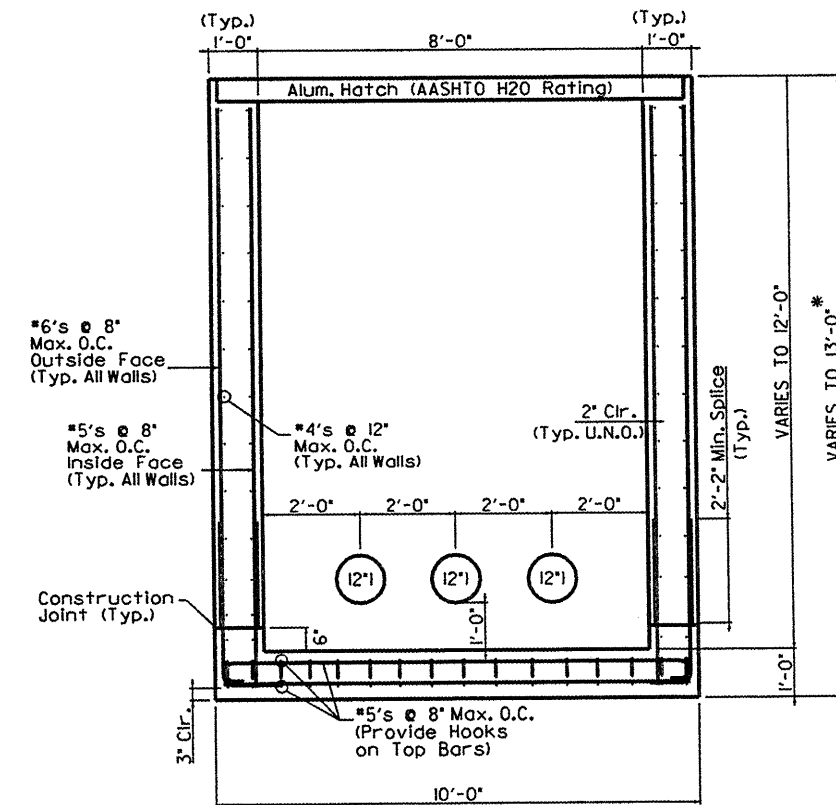
SHORT WALL ELEVATION

* MAXIMUM INSTALLATION DEPTH LIMITED TO 13'-0" FOR DESIGN REINFORCEMENT SHOWN. CONTACT STRUCTURAL ENGINEER FOR PROPOSED INSTALLATION DEPTHS GREATER THAN 13'-0".



LONG WALL ELEVATION

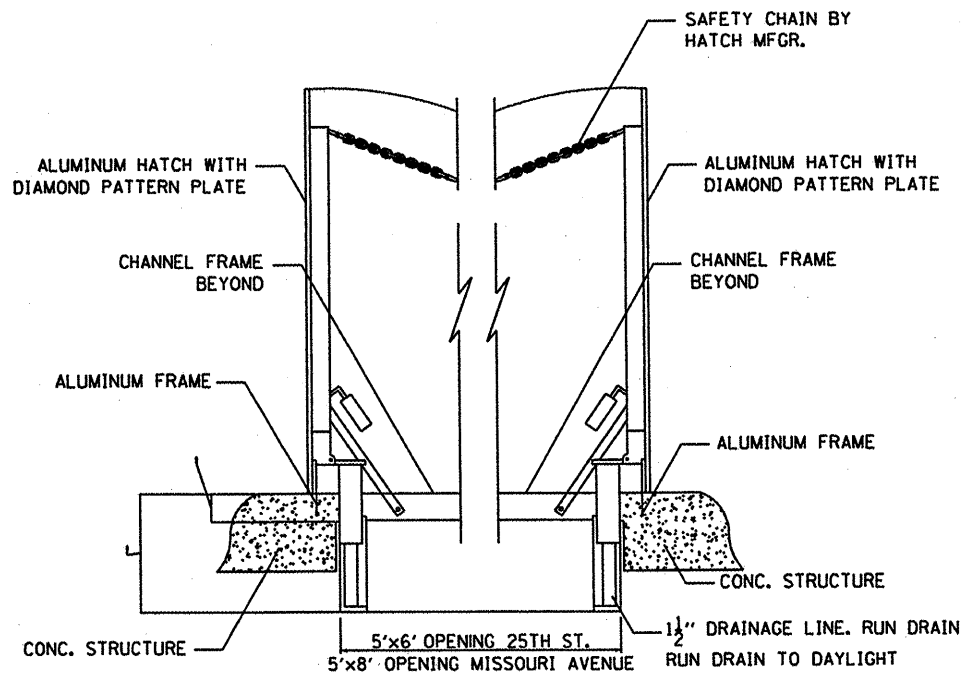
* MAXIMUM INSTALLATION DEPTH LIMITED TO 8'-0" FOR DESIGN REINFORCEMENT SHOWN.



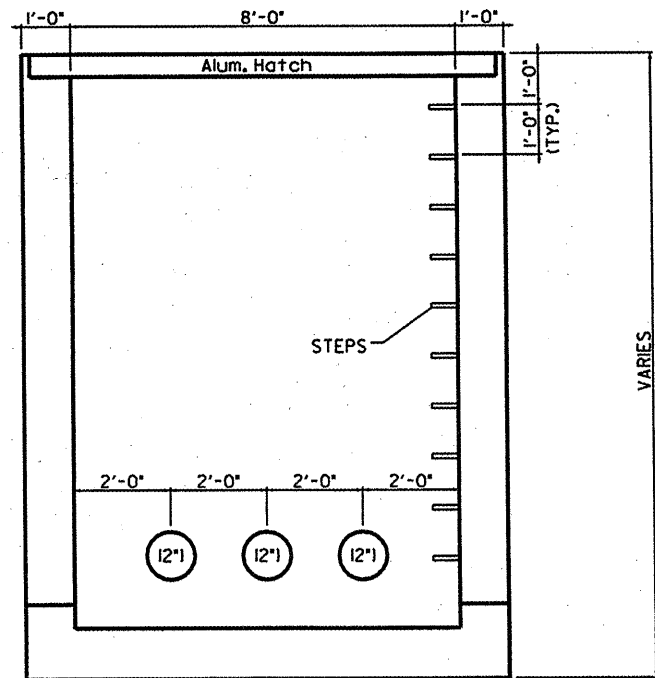
LONG WALL ELEVATION

* MAXIMUM INSTALLATION DEPTH LIMITED TO 13'-0" FOR DESIGN REINFORCEMENT SHOWN. CONTACT STRUCTURAL ENGINEER FOR PROPOSED INSTALLATION DEPTHS GREATER THAN 13'-0".

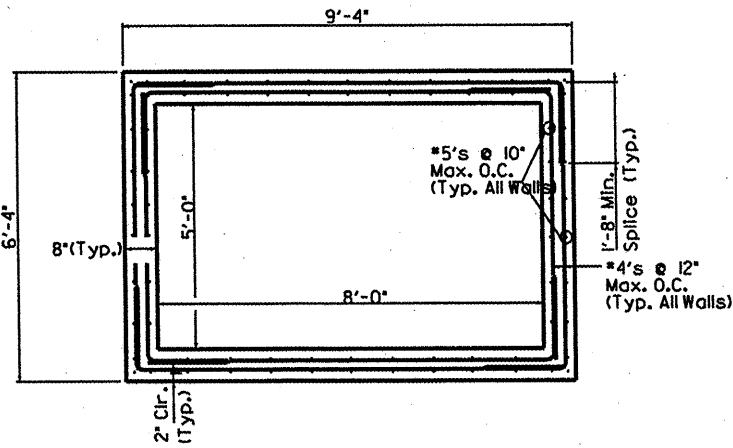
FILE NAME *	USER NAME * #USER#	DESIGNED - EJC	REVISED -	STATE OF ILLINOIS DEPARTMENT OF TRANSPORTATION	VAULT DETAILS CLEANOUT INSTALLATION MISSOURI AVENUE		F.A. RTE.	SECTION	COUNTY	TOTAL SHEETS	SHEET NO.
#FILE#		DRAWN - WPM	REVISED -		VARIOUS/DIST 8 DEEP WELLS 2010-2	ST. CLAIR	20	19			
PLOT SCALE * #SCALE#		CHECKED - EEA	REVISED -		SCALE: NTS	SHEET NO. 19 OF SHEETS	STA. TO STA.	ILLINOIS FED. AID PROJECT			
PLOT DATE * #DATE#		DATE - 05/06/10	REVISED -					CONTRACT NO. 76D62			



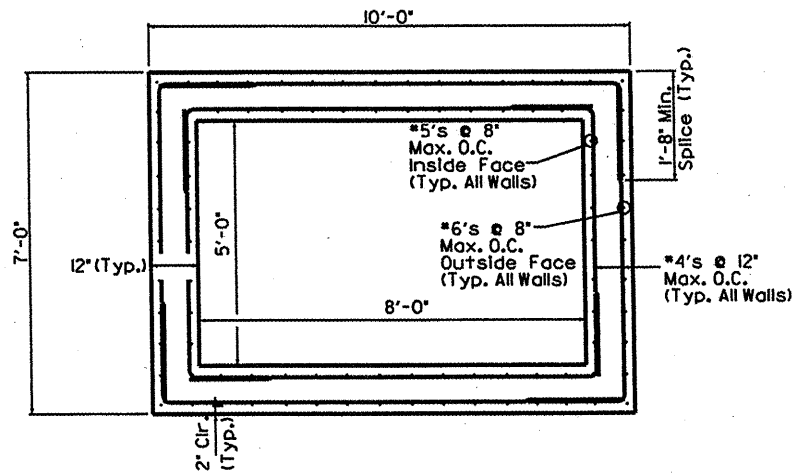
ACCESS HATCH DETAIL



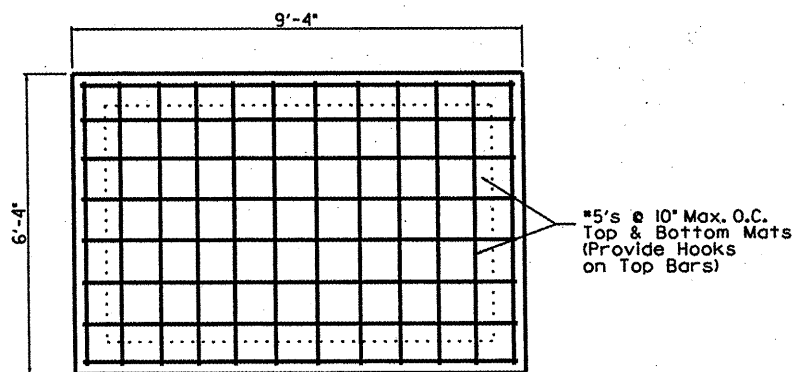
STEP DETAIL



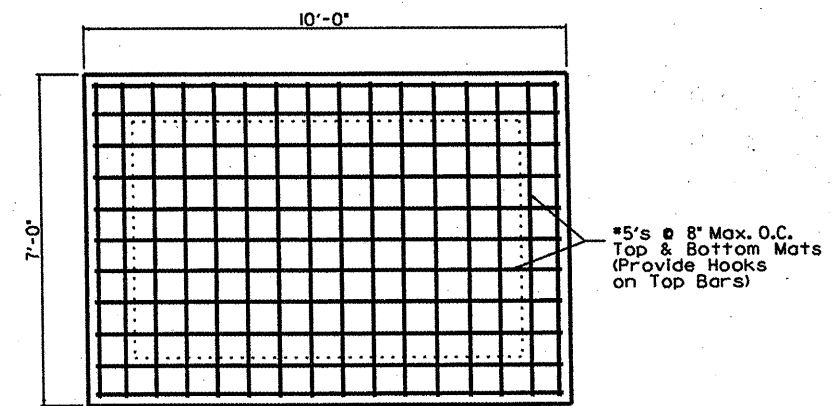
PLAN VIEW SHOWING WALL REINFORCEMENT



PLAN VIEW SHOWING WALL REINFORCEMENT



PLAN VIEW SHOWING FOOTING REINFORCEMENT



PLAN VIEW SHOWING FOOTING REINFORCEMENT

FILE NAME *	USER NAME * #USERS*	DESIGNED - EJC	REVISED -
#FILE#		DRAWN - WPM	REVISED -
		CHECKED - EEA	REVISED -
		DATE - 05/06/10	REVISED -

STATE OF ILLINOIS
DEPARTMENT OF TRANSPORTATION

VAULT DETAILS
CLEANOUT INSTALLATION MISSOURI AVENUE

SCALE: NTS SHEET NO. 20 OF SHEETS STA. TO STA.

F.A. RTE.	SECTION	COUNTY	TOTAL SHEETS	SHEET NO.
VARIOUS	DIST 8 DEEP WELLS 2000-2	ST. CLAIR	20	20
CONTRACT NO. 76062			ILLINOIS FED. AID PROJECT	