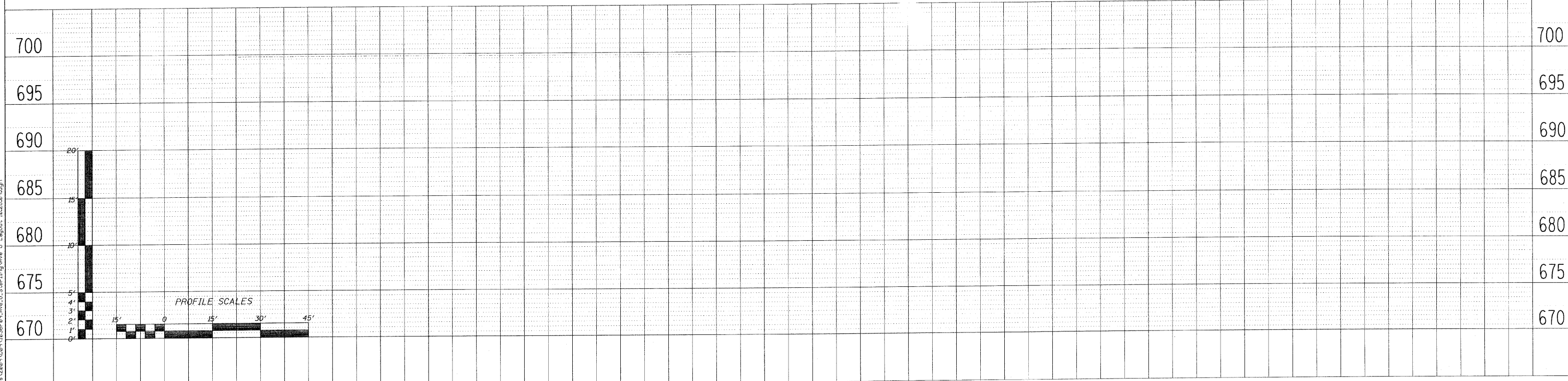
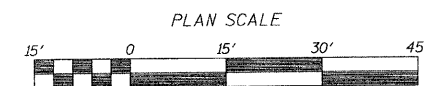
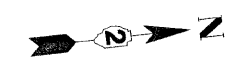


INDICATES LIMIT OF HOT MIX ASPHALT SURFACE REMOVAL - 2<sup>3</sup>/<sub>4</sub>". REMOVE FULL WIDTH OF AVENUE G AND AT INTERSECTING STREETS AS SHOWN.



FILE: H:\Jobs\2009\09\1226\F09\_Ave.G\_Sterling\Ave.G\_Layout\_10.28.09.dgn

**WILLET, HOFMANN & ASSOCIATES, INC.**  
 CONSULTING ENGINEERS  
 809 East Second Street Dixon, IL 61021  
 Phone 815.284.3381 Fax 815.284.3385  
 Design Firm #184-00018  
 www.willett-hofmann.com

DESIGNED - BDF	REVISED -
DRAWN - JDH	REVISED -
CHECKED - BDF	REVISED -
DATE -	REVISED -

**CITY OF STERLING, ILLINOIS**  
**AVENUE G - 5TH STREET TO LE FEVRE RD.**

**AVENUE G PLAN & PROFILE**

SCALE: SHEET NO. 10 OF 31 SHEETS

F.A. RTE.	SECTION	COUNTY	TOTAL SHEETS	SHEET NO.
	09-00147-00-RS	WHITESIDE	31	10
FED. ROAD DIST. NO. [ILLINOIS] FED. AID PROJECT			CONTRACT NO. 85495	