

|                       |                |              |              |           |
|-----------------------|----------------|--------------|--------------|-----------|
| F.A.U. RTE.           | SECTION        | COUNTY       | TOTAL SHEETS | SHEET NO. |
| 5102                  | 09-00557-00-BR | Winnebago    | 18           | 1         |
| FED. ROAD DIST. NO. 2 | ILLINOIS       | CONTRACT NO. | 85508        |           |

**INDEX OF SHEETS**

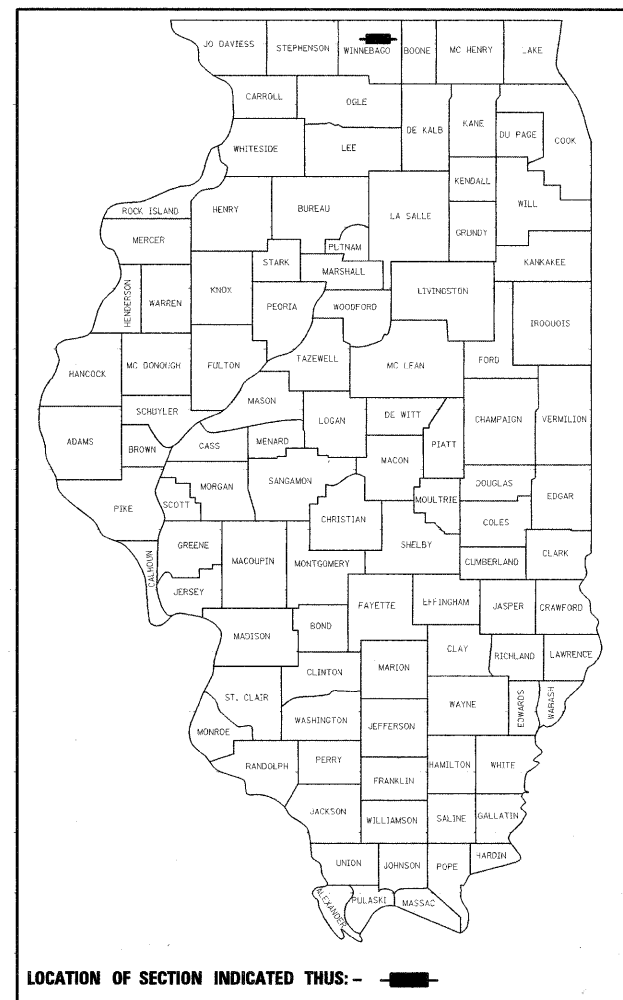
| SHEET NO. | DESCRIPTION                                  |
|-----------|--|
| 1         | COVER SHEET                                  |
| 2         | GENERAL NOTES & SPECIFICATIONS               |
| 3         | SUMMARY OF QUANTITIES                        |
| 4         | TYPICAL SECTIONS                             |
| 5         | PLAN AND PROFILE                             |
| 6         | TEMPORARY DETOUR PLAN                        |
| 7         | STRIPING, EROSION CONTROL & RESTORATION PLAN |
| 8-16      | BRIDGE PLANS                                 |
| 17-18     | CROSS SECTIONS                               |

**STATE STANDARDS**

|           |   |
|-----------|---|
| 000001-05 | STANDARD SYMBOLS, ABBREVIATIONS AND PATTERNS  |
| 280001-05 | TEMPORARY EROSION CONTROL SYSTEM  |
| 515001-03 | NAME PLATE FOR BRIDGES  |
| 542301-02 | PRECAST REINFORCED CONCRETE FLARED END SECTION  |
| 602001-01 | CATCH BASIN TYPE A  |
| 602401-02 | MANHOLE TYPE A  |
| 604001-03 | FRAME AND LIDS TYPE 1   |
| 604006-04 | FRAME AND GRATE TYPE 3  |
| 606001-04 | CONCRETE CURB TYPE B AND COMBINATION CONCRETE CURB AND GUTTER                           |
| 630001-08 | STEEL PLATE BEAM GUARDRAIL  |
| 630301-05 | SHOULDER WIDENING FOR TYPE 1 (SPECIAL) GUARDRAIL TERMINALS                              |
| 631031-08 | TRAFFIC BARRIER TERMINAL, TYPE 6  |
| 635006-03 | REFLECTOR AND TERMINAL MARKER PLACEMENT   |
| 635011-02 | REFLECTOR MARKER AND MOUNTING DETAILS   |
| 701006-03 | OFF-RD OPERATIONS, 2L, 2W, 15' (4.5M) TO 24" (600mm) FROM PAVEMENT EDGE                 |
| 701201-03 | LANE CLOSURE, 2L, 2W, DAY ONLY, FOR SPEEDS ≥ 45 MPH                                     |
| 701301-03 | LANE CLOSURE, 2L, 2W, SHORT TIME OPERATIONS   |
| 701901-01 | TRAFFIC CONTROL DEVICES   |
| 720001-01 | SIGN PANEL MOUNTING DETAILS   |
| 720006-02 | SIGN PANEL ERECTION DETAILS   |
| 720011-01 | METAL POSTS FOR SIGNS, MARKERS AND DELINEATORS  |
| 728001-01 | TELESCOPING STEEL SIGN SUPPORT  |
| 729001-01 | APPLICATIONS OF TYPES A & B METAL POSTS (FOR SIGNS AND MARKERS)                         |
| 780001-02 | TYPICAL PAVEMENT MARKINGS   |
| BLR 21-8  | TYPICAL APPLICATION OF TRAFFIC CONTROL DEVICES FOR CONSTRUCTION ON RURAL LOCAL HIGHWAYS |
| 701801-04 | LANE CLOSURE MULTILANE 1W OR 2W CROSSWALK OR SIDEWALK CLOSURE                           |
| BLR 22-6  | TYPICAL APPLICATION OF TRAFFIC CONTROL DEVICES FOR CONSTRUCTION ON RURAL LOCAL HIGHWAYS |

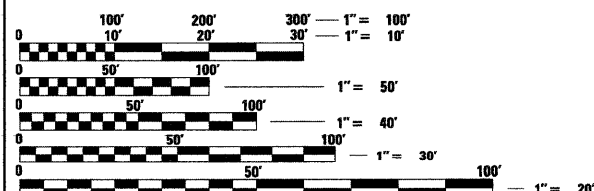
# CITY OF ROCKFORD PLANS FOR PROPOSED FEDERAL AID HIGHWAY

**FAU ROUTE 5102  
CENTRAL AVENUE  
OVER THE SOUTH BRANCH OF KENT CREEK  
SECTION 09-00557-00-BR  
BRIDGE SUPERSTRUCTURE REPLACEMENT  
PROJECT NO. BHM-5099 (081)  
S.N. 101-6124  
WINNEBAGO COUNTY  
C-92-097-09**



**STRUCTURE INFORMATION:**

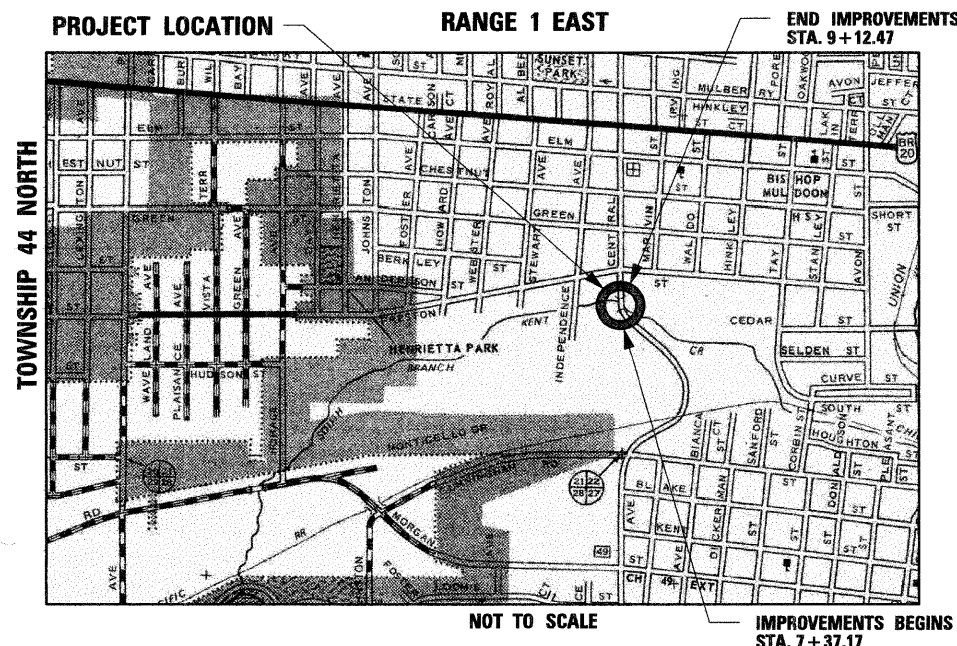
EXISTING SN: 101-6124:  
EXISTING THREE SPAN STRUCTURE CONSISTS OF CONTINUOUS REINFORCED CONCRETE SLAB WITH AN OUT-TO-OUT WIDTH OF 39'-0" AND A TOTAL LENGTH OF 76'-3 5/8" BK. TO BK.  
ABUTMENTS WITH A 9 DEGREE 56 MINUTE SKEW. THE SUBSTRUCTURES CONSIST OF PILE BENT PIERS AND ABUTMENTS. SUPERSTRUCTURE TO BE REMOVED AS SHOWN. SALVAGED EXISTING ALUMINUM RAILINGS TO REMAIN PROPERTY OF THE CITY.  
  
PROPOSED WORK INCLUDES PLACING A REINFORCED CONCRETE SLAB SUPERSTRUCTURE AS SHOWN.



FULL SIZE PLANS HAVE BEEN PREPARED USING STANDARD ENGINEERING SCALES. REDUCED SIZED PLANS WILL NOT CONFORM TO STANDARD SCALES. IN MAKING MEASUREMENTS ON REDUCED PLANS, THE ABOVE SCALES MAY BE USED.

**J.U.I.E.  
JOINT UTILITY LOCATION INFORMATION FOR EXCAVATION  
1-800-892-0123**

**CONTRACT NO. 85508**



**ROCKFORD TOWNSHIP**  
GROSS LENGTH OF IMPROVEMENT = 176 FT. = 0.03 MILES  
NET LENGTH OF IMPROVEMENT = 176 FT. = 0.03 MILES

**FUNCTIONAL CLASSIFICATION  
MINOR ARTERIAL (URBAN)**

**DESIGN SPEED  
CENTRAL AVE.: 35 MPH**

**SPEED LIMIT  
CENTRAL AVE.: 30 MPH**

**TRAFFIC DATA:  
CENTRAL AVE: ADT=5,800 (2008)  
ADT=7,200 (2030)  
4% TRUCKS**

**PRINTED BY THE AUTHORITY  
OF THE STATE OF ILLINOIS**

**CITY OF ROCKFORD**

APPROVED January 27, 2010 (DATE)  
Bob T. Moberg  
CITY OF ROCKFORD, CITY ENGINEER

PASSED February 9, 2010 (DATE)  
Jim L. Pflum  
DISTRICT 2 ENGINEER OF LOCAL ROADS & STREETS

RELEASING FOR BID  
BASED ON LIMITED  
REVIEW February 9, 2010 (DATE)  
Kevin M. Arft  
DEPUTY DIRECTOR OF HIGHWAYS, REGION 2 ENGINEER

**ENGINEER AND SURVEYOR:**

SEC GROUP INC.  
420 NORTH FRONT STREET  
MCHENRY, ILLINOIS 60050-2136  
(815) 385-1778  
CONTACT:  
BOB DAVIES, S.E., P.E. - STRUCTURAL ENGINEER  
KEVIN M. ARFT, P.E. - PROJECT ENGINEER

**STRUCTURAL ENGINEER'S SIGN & SEAL**

Robert G. Davies  
ROBERT G. DAVIES, S.E., P.E.  
DATE 1-26-2010  
EXPIRES 11/30/2010



**PROFESSIONAL ENGINEER'S SIGN & SEAL**

Kevin M. Arft  
KEVIN M. ARFT, P.E.  
DATE 01-26-2010  
EXPIRES 11-30-2011



FEDERAL AID DESIGN ENGINEER, LAURA CONNOLLY (815) 284-2271