

F.A.S. RTE.	SECTION	COUNTY	TOTAL SHEETS	SHEET NO.
1472	07-00073-09-WR	McLEAN	8	1
FED. ROAD DIST. NO. 5		ILLINOIS	CONTRACT NO. 91434	

INDEX OF SHEETS

- 1. COVER SHEET
- 2-3. TYPICAL CROSS SECTIONS
- 4-5. DETAILS
- 6-8. PLAN SHEETS

STATE STANDARD DETAILS

- 701001-02 OFF-RD OPERATIONS, 2L, 2W, MORE THAN 15' AWAY
- 701006-03 OFF-RD OPERATIONS, 2L, 2W, 15' TO 24" FROM PAVEMENT EDGE
- 701011-02 OFF-RD MOVING OPERATIONS, 2L, 2W, DAY ONLY
- 701201-03 LANE CLOSURE, 2L, 2W, DAY ONLY, FOR SPEEDS > 45 MPH
- 701301-03 LANE CLOSURE, 2L, 2W, SHORT TIME OPERATIONS
- 701326-03 LANE CLOSURE, 2L, 2W, PAVEMENT WIDENING, FOR SPEEDS > 45 MPH
- 701306-02 LANE CLOSURE, 2L, 2W, SLOW MOVING OPERATIONS DAY ONLY, FOR SPEEDS > 45 MPH
- 701901-01 TRAFFIC CONTROL DEVICES
- 781001-03 TYPICAL APPLICATIONS RAISED REFLECTIVE PAVEMENT MARKERS

SUMMARY OF QUANTITIES

ITEM NUMBER	ITEM	UNIT	QUANTITY
* 20200500	EARTH EXCAVATION (WIDENING)	CU YD	848
35600700	HOT-MIX ASPHALT BASE COURSE WIDENING, 6"	SQ YD	5,086
* 40600100	BITUMINOUS MATERIALS (PRIME COAT)	GALLON	4,100
* 40600300	AGGREGATE (PRIME COAT)	TON	200
* 40600625	LEVELING BINDER (MACHINE METHOD), N50	TON	2,100
40600982	HOT-MIX ASPHALT SURFACE REMOVAL - BUTT JOINT	SQ YD	286
40600990	TEMPORARY RAMP	SQ YD	40
* 40603080	HOT-MIX ASPHALT BINDER COURSE, IL-19.0, N50	TON	5,200
* 40603310	HOT-MIX ASPHALT SURFACE COURSE, MIX "C", N50	TON	2,900
* 40800010	BITUMINOUS MATERIALS (PRIME COAT)	GAL	200
* 40800030	AGGREGATE (PRIME COAT)	TON	15
* 40800050	INCIDENTAL HOT-MIX ASPHALT SURFACING	TON	250
* 44300300	AREA REFLECTIVE CRACK CONTROL TREATMENT, SYSTEM A	SQ YD	40,689
* 48101200	AGGREGATE SHOULDERS, TYPE B	TON	3,000
67100100	MOBILIZATION	L SUM	1
70103700	TRAFFIC CONTROL COMPLETE	L SUM	1
△ 78100100	RAISED REFLECTIVE PAVEMENT MARKER	EACH	190

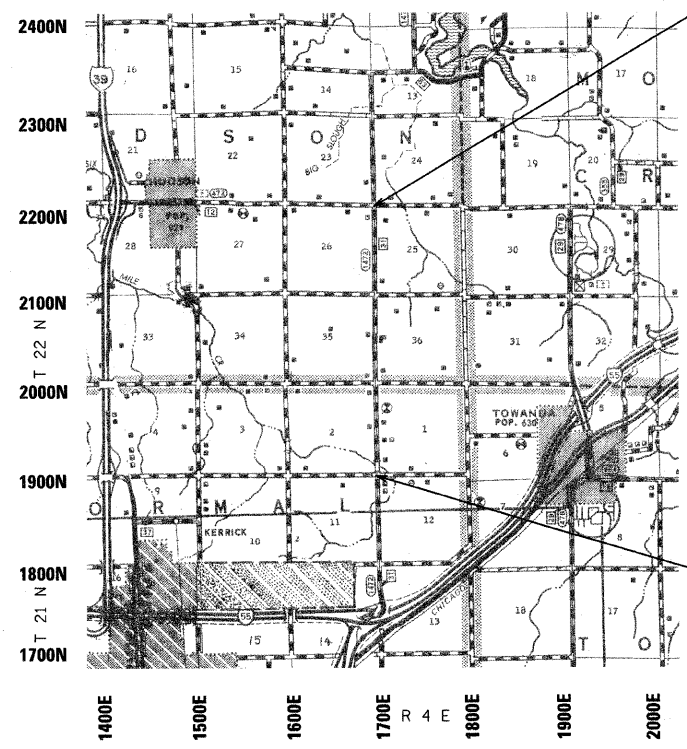
\* SEE SPECIAL PROVISIONS  
 △ SPECIALTY ITEMS

J.U.L.I.E.  
 JOINT UTILITY LOCATION INFORMATION FOR EXCAVATION  
 1-800-892-0123  
 OR 811

PROJECT ENGINEER  
 PROJECT MANAGER

CONTRACT NO. 91434

STATE OF ILLINOIS  
 DEPARTMENT OF TRANSPORTATION  
 DIVISION OF HIGHWAYS  
**PLANS FOR PROPOSED  
 McLEAN COUNTY  
 FEDERAL AID SECONDARY (STP-SR)  
 PIPELINE RD (CH 31)**  
 F.A.S. ROUTE 1472 SECTION 07-00073-09-WR  
 PROJECT #RS-1472(104)  
 JOB #C-95-324-10



ENDING STA: 241+02.5  
 OMISSION 90'  
 STA: 240+12.5  
 TO STA: 241+02.5

BEGINNING STA: 80+27.5  
 OMISSION 726.5'  
 STA: 80+27.5 TO STA: 87+54

APPROXIMATE SCALE: 0 1 MILE

- NOTE: THE TOTAL LENGTH OF THE PROPOSED PROJECT IS 16,075 FEET WITH A NET LENGTH OF 15,285.50 FEET (2.890 MILES)
- NOTE: THESE PLANS MEET THE MINIMUM REQUIREMENTS FOR A 3R IMPROVEMENT.
- NOTE: CURRENT ADT: 2100  
FUNCTIONAL CLASSIFICATION: MAJOR COLLECTOR
- NOTE: THE PLANS FOR SECTION 07-00073-09-WR ARE THOSE AS APPROVED IN SECTION 73 C.



Jerry W. Stuber  
 ILLINOIS PROFESSIONAL ENGINEER #57636  
 EXPIRES 11-30-2011

**McLEAN COUNTY  
 HIGHWAY DEPARTMENT**

APPROVED Feb. 23, 20 10  
[Signature]  
 COUNTY ENGINEER

PASSED 3/15 20 10  
[Signature]  
 DISTRICT FIVE ENGINEER OF  
 LOCAL ROADS & STREETS

Releasing For  
 Bid Based on  
 Limited Review MARCH 16 20 10

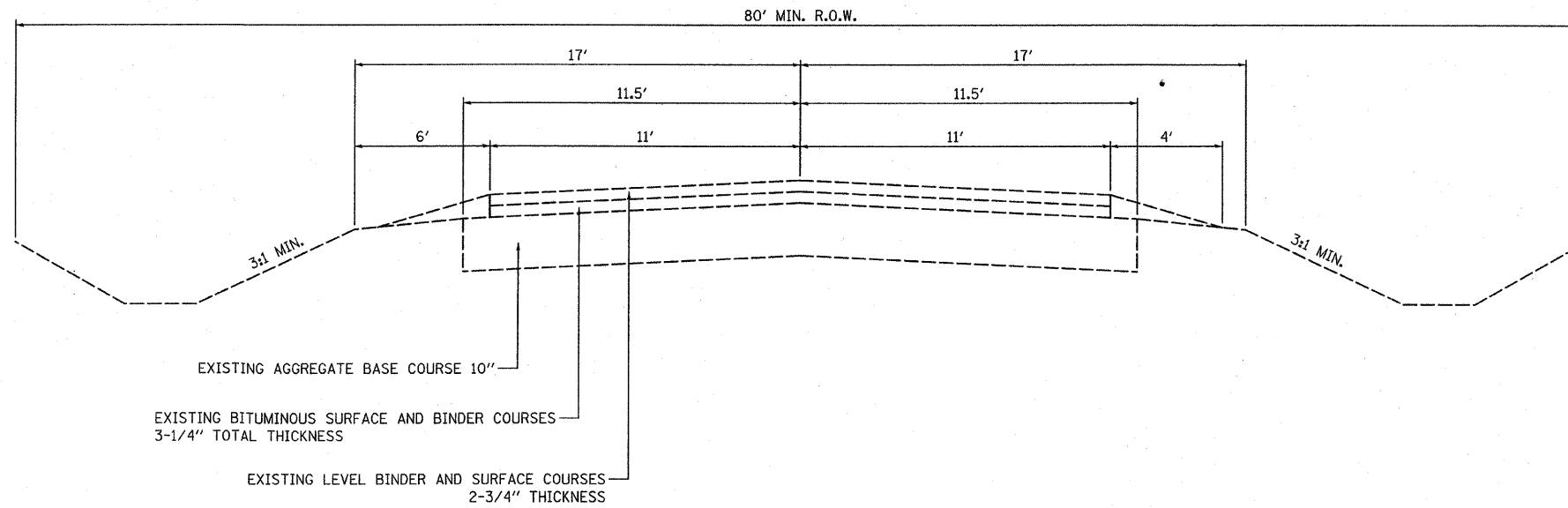
[Signature]  
 DEPUTY DIRECTOR OF HIGHWAYS,  
 REGION THREE ENGINEER

STATE OF ILLINOIS  
 DEPARTMENT OF TRANSPORTATION

**PRINTED BY THE AUTHORITY  
 OF THE STATE OF ILLINOIS**

## CH 31 (PIPELINE ROAD) EXISTING TYPICAL CROSS SECTION

STA: 87+54 TO 240+12.5  
(OMISSION STA: 80+27.5 TO STA: 87+54)  
(OMISSION STA: 240+12.50 TO STA: 241+02.50)



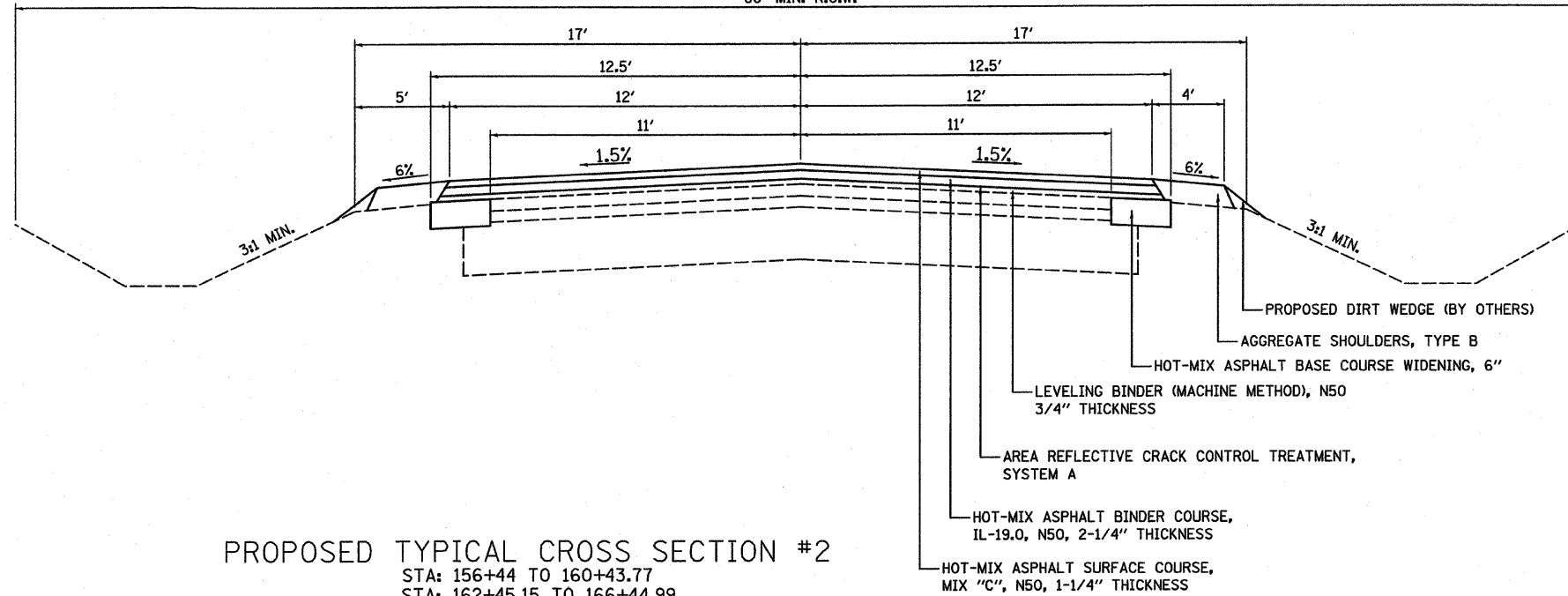
FILE NAME =	USER NAME = SUSERR	DESIGNED =	REVISED =	<b>STATE OF ILLINOIS DEPARTMENT OF TRANSPORTATION</b>	<b>EXISTING TYPICAL CROSS SECTIONS</b>	F.A. RTE.	SECTION	COUNTY	TOTAL SHEETS	SHEET NO.	
SPFILES		DRAWN = EJJ	REVISED =			1472	07-00073-09-WR	McLEAN	8	2	
PLOT SCALE = SCALES		CHECKED =	REVISED =			CONTRACT NO. 91434					
PLOT DATE = SDATER		DATE =	REVISED =			SCALE: NO SCALE	SHEET NO. 1 OF 1 SHEETS	STA. TO STA.	FED. ROAD DIST. NO. 5	ILLINOIS	FED. AID PROJECT

PIPELINE RD (CH 31)

PROPOSED TYPICAL CROSS SECTION #1

STA: 87+54 TO 156+44  
 STA: 160+43.77 TO 162+45.15  
 STA: 166+44.99 TO 240+12.50  
 (OMISSION STA: 80+27.50 TO STA: 87+54)  
 (OMISSION STA: 240+12.5 TO STA: 241+02.50)

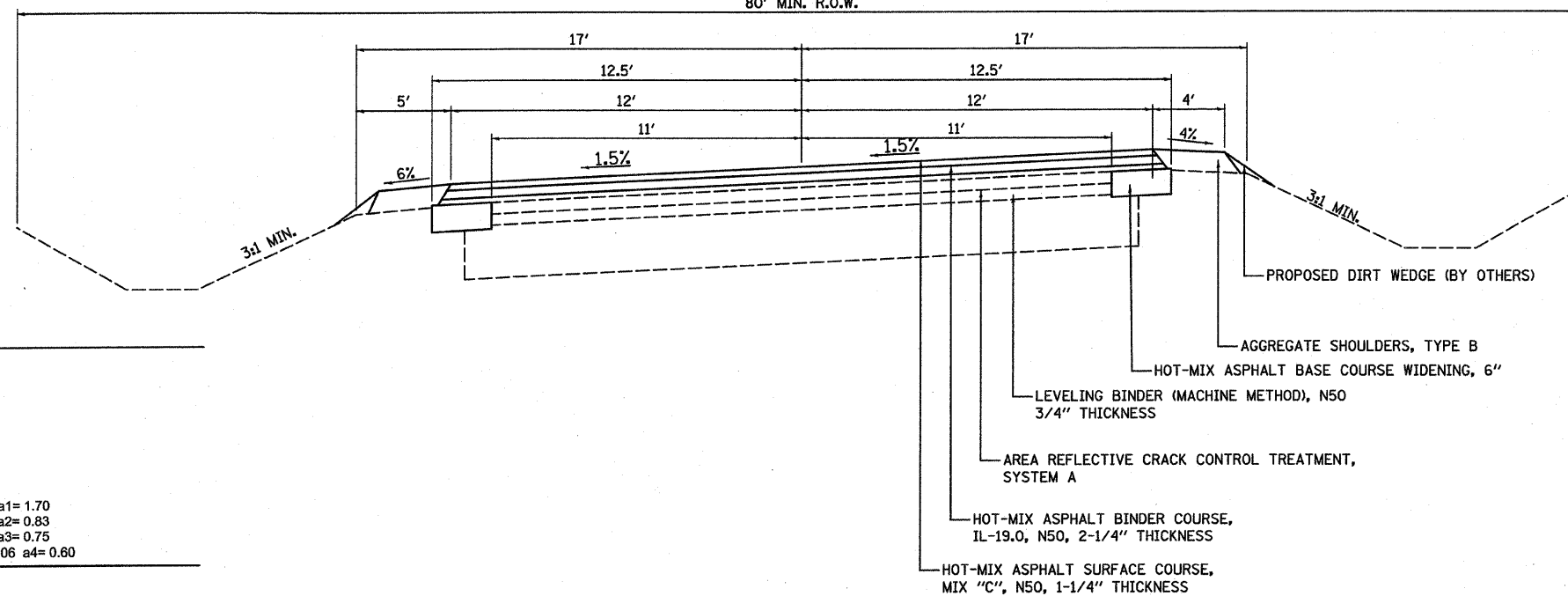
80' MIN. R.O.W.



PROPOSED TYPICAL CROSS SECTION #2

STA: 156+44 TO 160+43.77  
 STA: 162+45.15 TO 166+44.99

80' MIN. R.O.W.



STRUCTURAL DESIGN DATA 80,000# PROPOSED TYPICAL

CLASS III ROAD DESIGN PERIOD 20 YEARS  
 STRUCTURAL DESIGN TRAFFIC: 2440 YEAR: 2018  
 PERCENT OF DESIGN TRAFFIC IN DESIGN LANE:  
 P.C. 88% S.U. 7% M.U. 5%  
 P.C. 2147 S.U. 171 M.U. 122  
 MINIMUM SOIL SUPPORT: IBR= 3.0  
 TRAFFIC FACTOR (T.F.)= 0.533  
 STRUCTURAL NUMBER (D<sub>s</sub>): 3.8  
 PAVEMENT STRUCTURE MATERIALS:  
 SURFACE: PROPOSED HOT-MIX ASPHALT 4.25" @ 0.40 a1= 1.70  
 BASE: EXISTING BITUMINOUS CONCRETE 2.75" @ 0.30 a2= 0.83  
 BASE: EXISTING BITUMINOUS CONCRETE 3.25" @ 0.23 a3= 0.75  
 SUBBASE: EXISTING AGGREGATE BASE COURSE 10" @ 0.06 a4= 0.60

PROPOSED (D<sub>s</sub>) TOTAL= 3.88

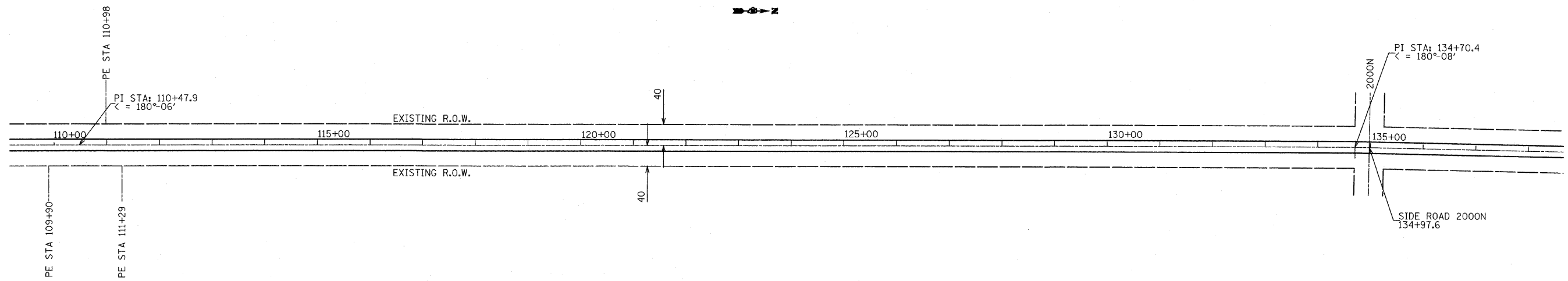
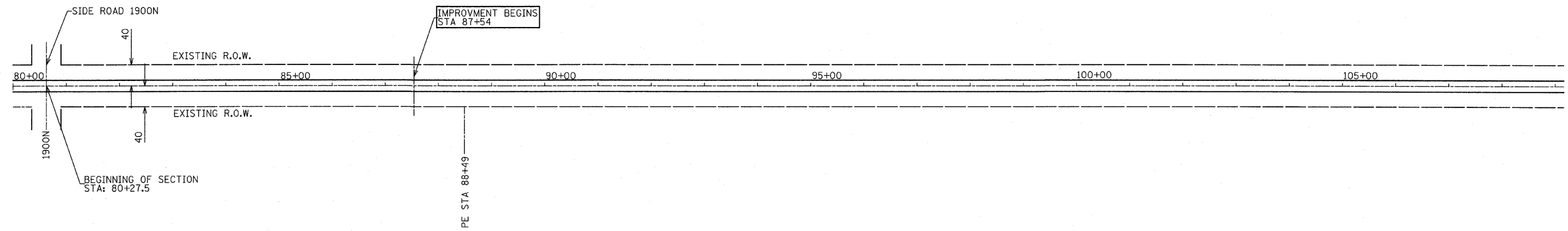
FILE NAME =	USER NAME = SUSERS	DESIGNED --	REVISED --
SHEETS		DRAWN -- EJJ	REVISED --
		CHECKED --	REVISED --
		DATE --	REVISED --

STATE OF ILLINOIS  
 DEPARTMENT OF TRANSPORTATION

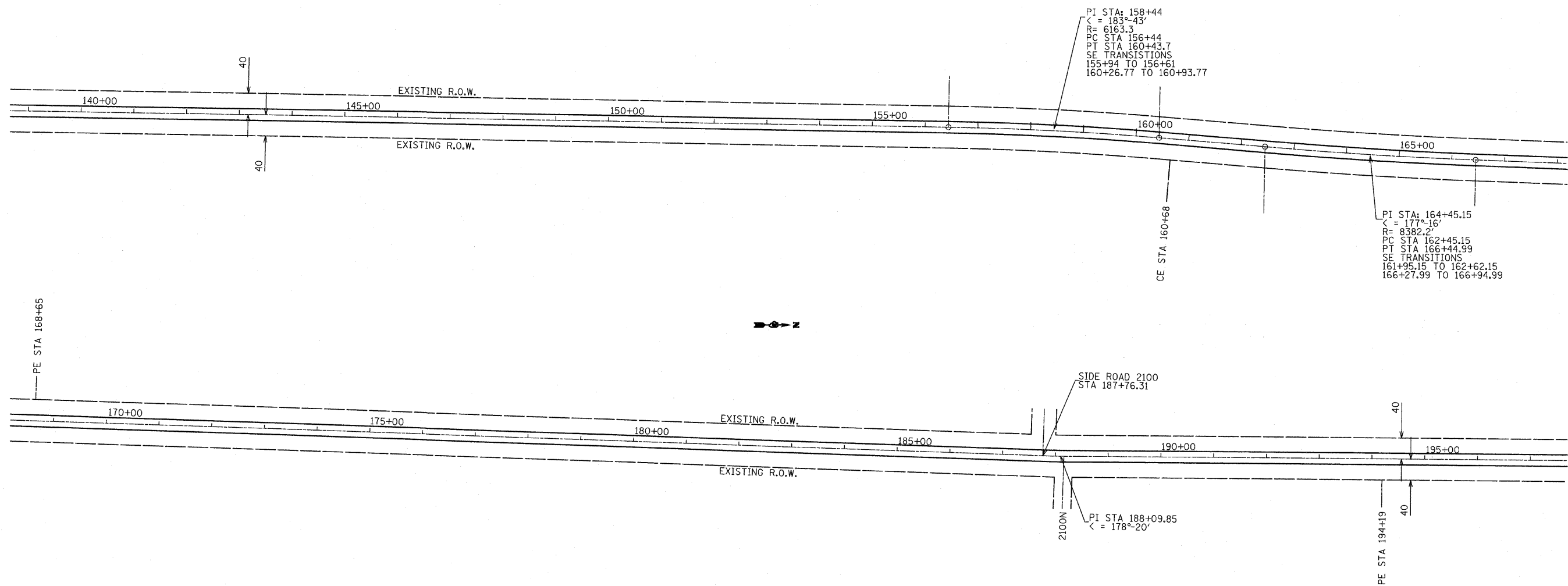
TYPICAL CROSS SECTIONS

F.A. RYE	SECTION	COUNTY	TOTAL SHEETS	SHEET NO.
1472	07-00073-09-WR	McLEAN	8	3
CONTRACT NO. 91434				
FED. ROAD DIST. NO. 5 ILLINOIS FED. AID PROJECT				

SCALE: NO SCALE SHEET NO. 1 OF 1 SHEETS STA. TO STA.



FILE NAME =	USER NAME = DUSERS	DESIGNED =	REVISED =	<b>STATE OF ILLINOIS DEPARTMENT OF TRANSPORTATION</b>	<b>PLAN SHEETS</b>	F.A. RTE.	SECTION	COUNTY	TOTAL SHEETS	SHEET NO.	
SFILES		DRAWN = MRA	REVISED =			1472	07-00073-09-WR	McLEAN	8	4	
	PLOT SCALE = SCALES	CHECKED =	REVISED =			CONTRACT NO. 91434					
	PLOT DATE = DATES	DATE =	REVISED =			SCALE: NO SCALE	SHEET NO. 6 OF 8 SHEETS	STA. 80+00 TO STA. 138+00	ILLINOIS FED. AID PROJECT		



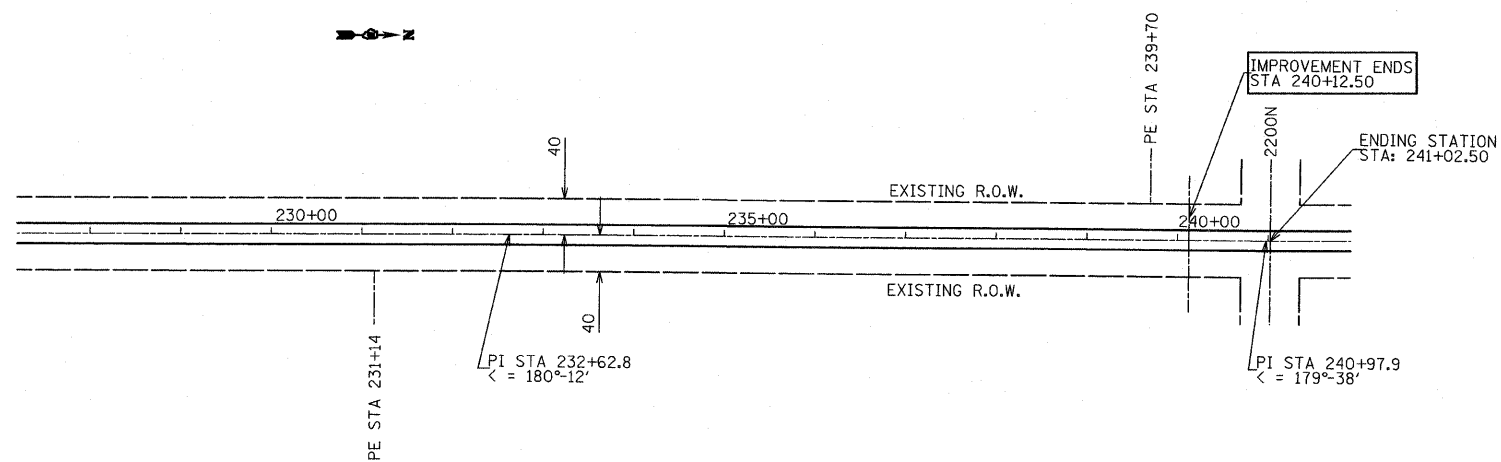
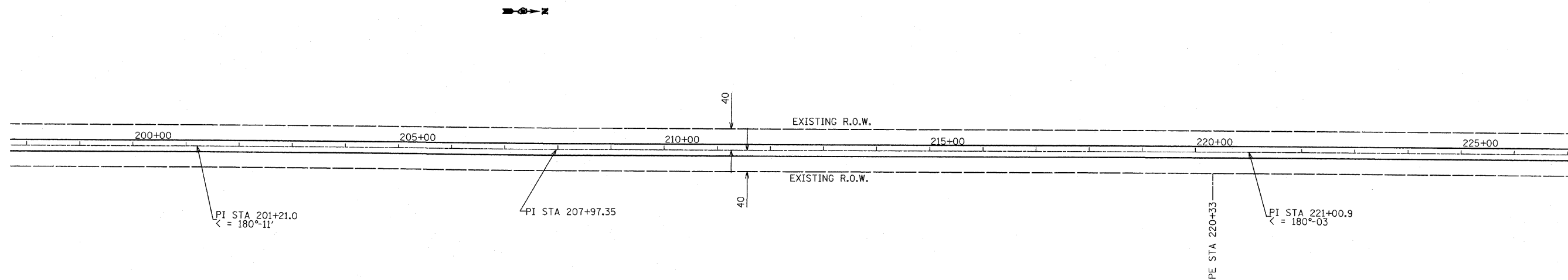
FILE NAME =	USER NAME = SUSERS	DESIGNED -	REVISED -
FILE#		DRAWN - MRA	REVISED -
	PLOT SCALE = SCALES	CHECKED -	REVISED -
	PLOT DATE = DATES	DATE -	REVISED -

STATE OF ILLINOIS  
DEPARTMENT OF TRANSPORTATION

PLAN SHEETS

SCALE: NO SCALE SHEET NO. 7 OF 8 SHEETS STA. 139+00 TO STA. 197+00

F.A. RTE.	SECTION	COUNTY	TOTAL SHEETS	SHEET NO.
1472	07-00073-09-WR	McCLEAN	8	5
CONTRACT NO. 91434				
FED. ROAD DIST. NO. 5 ILLINOIS FED. AID PROJECT				



FILE NAME =	USER NAME = SUSERS	DESIGNED -	REVISED -
FILES		DRAWN - MRA	REVISED -
	PLOT SCALE = SSCALES	CHECKED -	REVISED -
	PLOT DATE = SDATES	DATE -	REVISED -

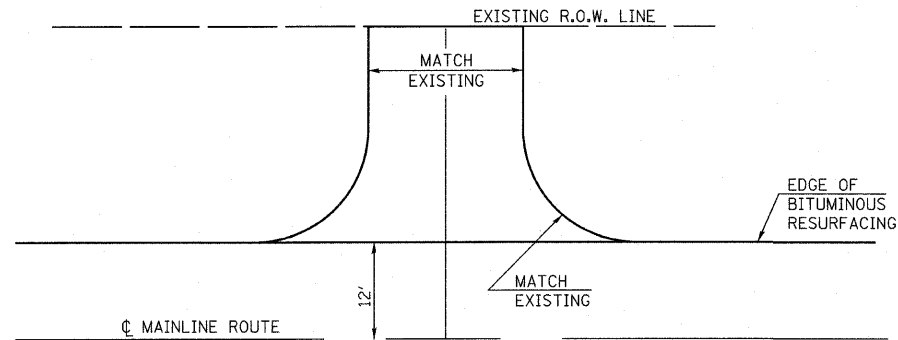
**STATE OF ILLINOIS  
DEPARTMENT OF TRANSPORTATION**

<b>PLAN SHEETS</b>	
SCALE: NO SCALE	SHEET NO. 8 OF 8 SHEETS
STA. 198+00	TO STA. 240+97.9

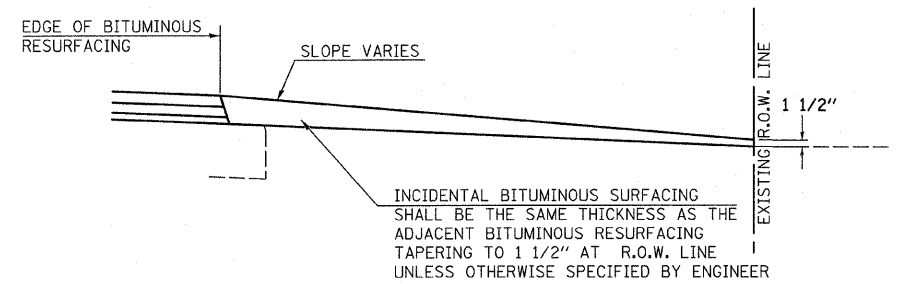
F.A. RTE.	SECTION	COUNTY	TOTAL SHEETS	SHEET NO.
1472	07-00073-09-WR	McLEAN	8	6
CONTRACT NO. 91434				
FED. ROAD DIST. NO. 5 ILLINOIS FED. AID PROJECT				

**TYPICAL RURAL PRIVATE ENTRANCE**

9 @ 65.8 SQ YDS EACH



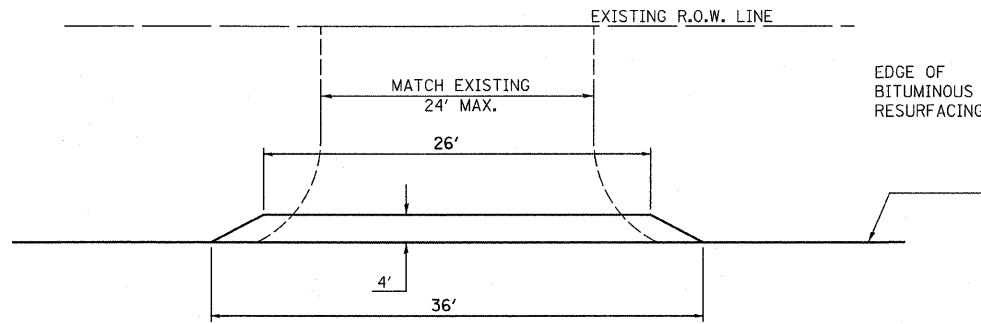
**PLAN F**



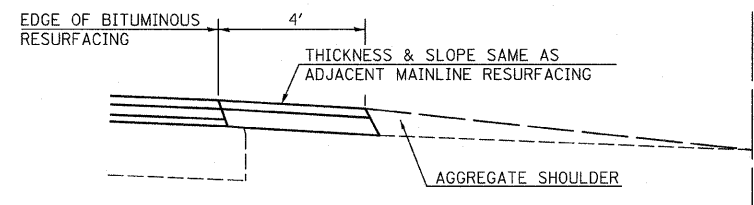
**PROFILE F**

**TYPICAL FIELD ENTRANCE**

27 @ 13.8 SQ YDS EACH



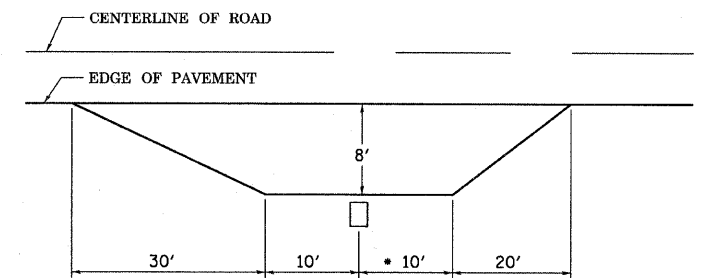
**PLAN G**



**PROFILE G**

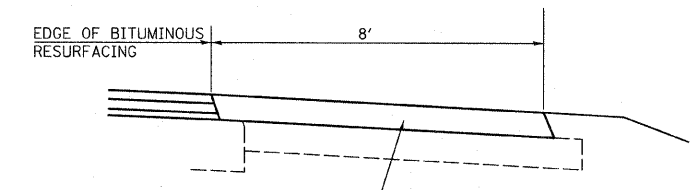
**TYPICAL RURAL MAILBOX TURNOUT**

8 @ 41 SQ YD EACH



**PLAN I**

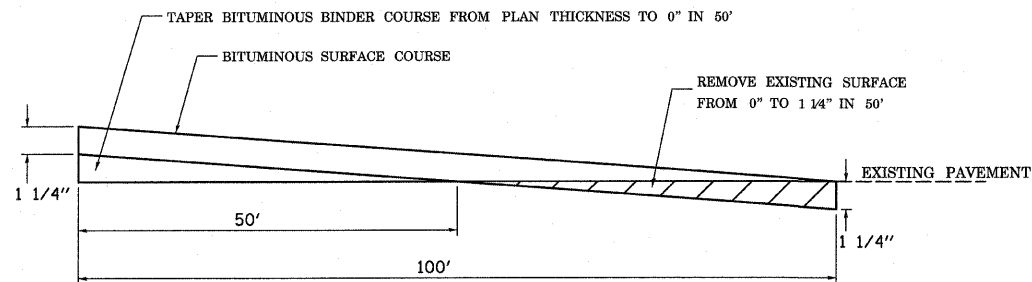
NOTE: \* MULTIPLE MAILBOX CLUSTERS TO BE EXTENDED 2' FOR EACH ADDITIONAL MAILBOX



**PROFILE I**

**TYPICAL BITUMINOUS SURFACE REMOVAL-BUTT JOINT**

1 @ 122.2 SQ YDS STA: 87+54(BEGINNING STATION)  
1 @ 122.2 SQ YDS STA: 240+12.5 (ENDING STATION)



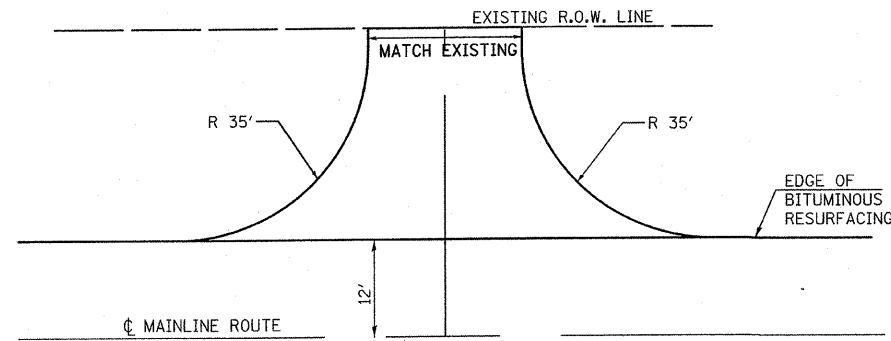
**NOTES:**

1. ALL TEMPORARY & PERMANENT PAVEMENT STRIPING WILL BE DONE BY OTHERS.
2. ALL FIELD ENTRANCES SHALL BE CONSTRUCTED WITH THE EXTENDABLE SCREED WIDENER AND PAID FROM HOT-MIX ASPHALT BINDER AND SURFACE COURSES.
3. ALL SIDE ROAD RETURNS, PRIVATE ENTRANCES, COMMERCIAL ENTRANCES AND RURAL MAILBOX TURNOUTS ARE TO BE CONSTRUCTED AND PAID FROM INCIDENTAL HOT-MIX ASPHALT SURFACING.
4. AGGREGATE SHOULDERS SHALL BE PLACED ALONG ALL SIDEROAD RETURN RADII AND COMMERCIAL ENTRANCES AND SHALL BE PLACED ALONG AND BEHIND ALL FIELD ENTRANCES, MAILBOX TURNOUTS AND ALL PRIVATE ENTRANCES UNLESS SPECIFIED BY THE RESIDENT ENGINEER.

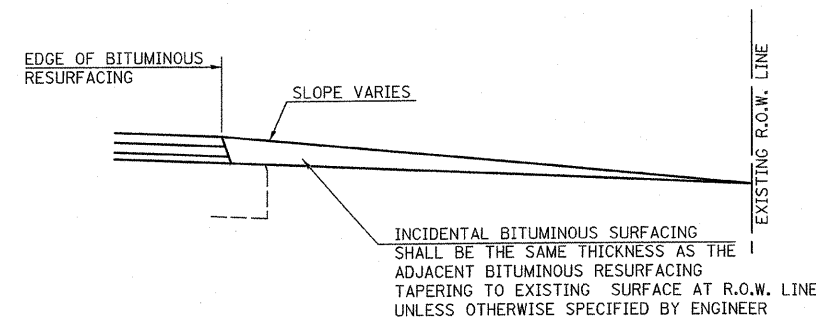
FILE NAME =	USER NAME = SUSERS	DESIGNED =	REVISED =	<b>STATE OF ILLINOIS DEPARTMENT OF TRANSPORTATION</b>	<b>DETAILS</b>	F.A. RTE.	SECTION	COUNTY	TOTAL SHEETS	SHEET NO.	
FILE#		DRAWN = EJG	REVISED =			1472	07-00073-09-WR	McLEAN	8	7	
	PLOT SCALE = SSCALES	CHECKED =	REVISED =			CONTRACT NO. 91434					
	PLOT DATE = SDATES	DATE =	REVISED =			SCALE: NO SCALE	SHEET NO. 1 OF 2 SHEETS	STA. TO STA.	FED. ROAD DIST. NO. 5	ILLINOIS	FED. AID PROJECT

**TYPICAL RURAL SIDE ROAD RETURN**

4 @ 122.8 SQ YDS EACH



**PLAN H**

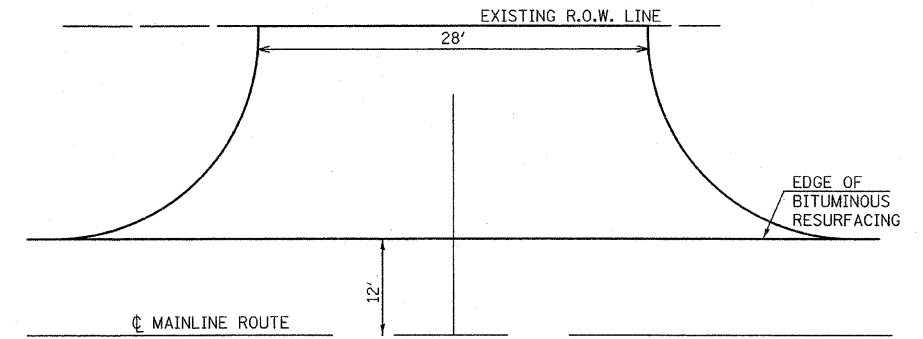


**PROFILE H**

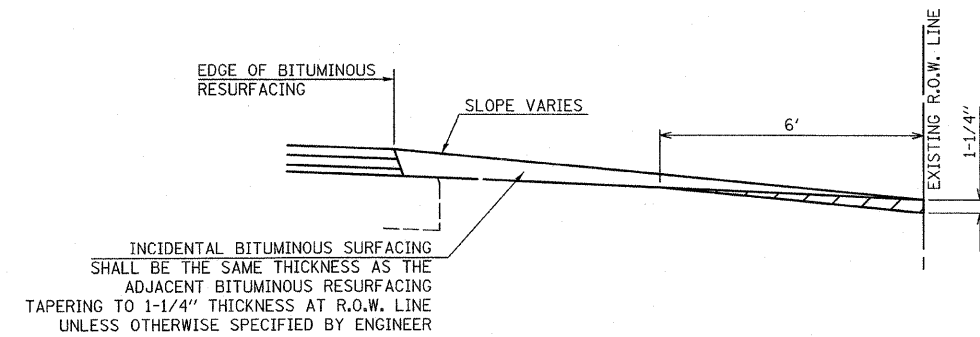
**COMMERCIAL ENTRANCE DETAIL**

ENTRANCE TO NICOR GAS

1 @ 139.4 SQ YDS



**PLAN I**



**PROFILE I**

**NOTES:**

1. ALL TEMPORARY & PERMANENT PAVEMENT STRIPING WILL BE DONE BY OTHERS.
2. ALL FIELD ENTRANCES SHALL BE CONSTRUCTED WITH THE EXTENDABLE SCREED WIDENER AND PAID FROM HOT-MIX ASPHALT BINDER AND SURFACE COURSES.
3. ALL SIDE ROAD RETURNS, PRIVATE ENTRANCES, COMMERCIAL ENTRANCES AND RURAL MAILBOX TURNOUTS ARE TO BE CONSTRUCTED AND PAID FROM INCIDENTAL HOT-MIX ASPHALT SURFACING.
4. AGGREGATE SHOULDERS SHALL BE PLACED ALONG ALL SIDEROAD RETURN RADII AND COMMERCIAL ENTRANCES AND SHALL BE PLACED ALONG AND BEHIND ALL FIELD ENTRANCES, MAILBOX TURNOUTS AND ALL PRIVATE ENTRANCES UNLESS SPECIFIED BY THE RESIDENT ENGINEER.

FILE NAME = \$FILES	USER NAME = \$USERS	DESIGNED -	REVISED -	<b>STATE OF ILLINOIS DEPARTMENT OF TRANSPORTATION</b>	<b>DETAILS</b>			F.A.S. RTE.	SECTION	COUNTY	TOTAL SHEETS	SHEET NO.
	PLOT SCALE = \$SCALES	CHECKED -	REVISED -					1472	07-00073-09-WR	McLEAN	8	8
	PLOT DATE = \$DATES	DATE -	REVISED -		SCALE: NO. SCALE SHEET NO. 2 OF 2 SHEETS STA. TO STA.			CONTRACT NO. 91434				
								FED. ROAD DIST. NO. 5 ILLINOIS FED. AID PROJECT				