

**INDEX OF SHEETS**

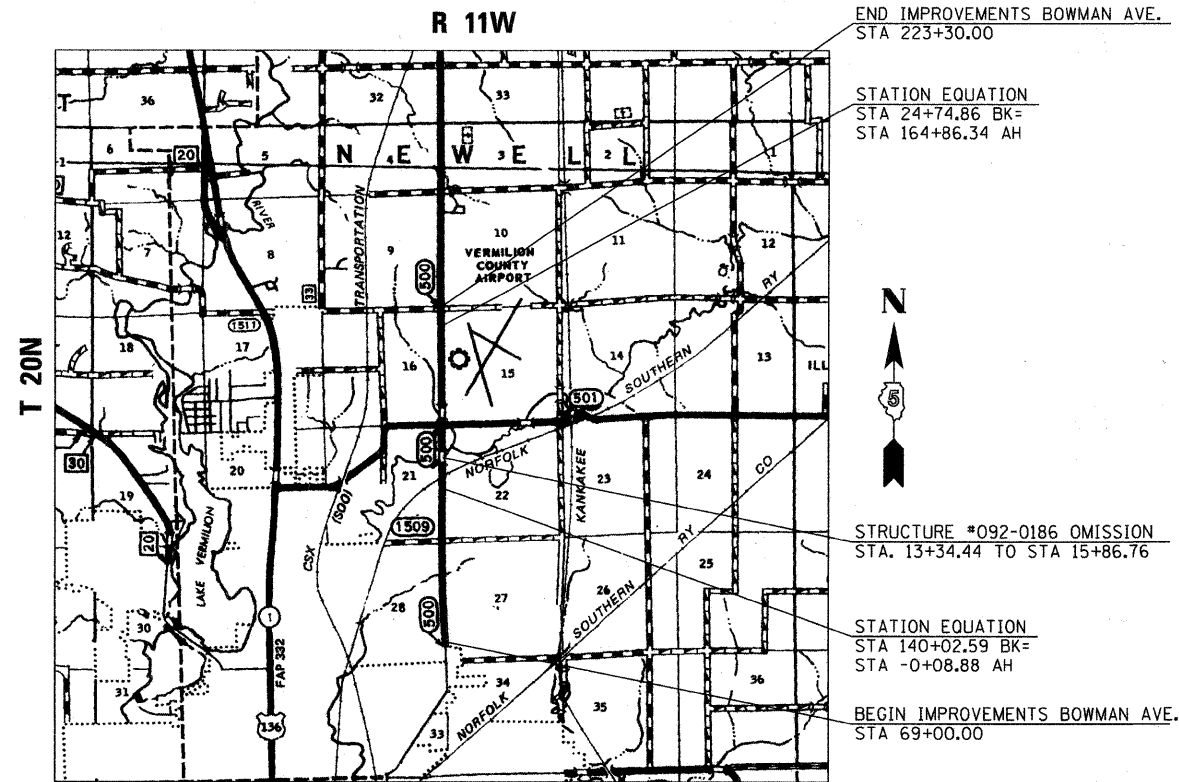
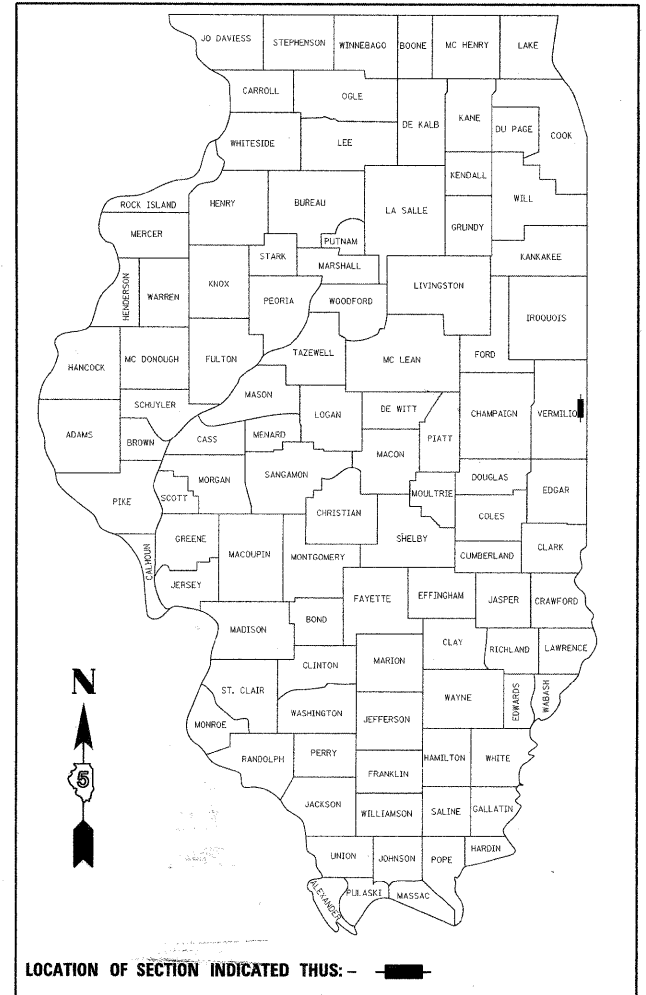
- 1 COVER SHEET
- 2 GENERAL NOTES, COMMITMENTS, MIXTURE REQUIREMENTS
- 3 - 5 SUMMARY OF QUANTITIES
- 6 - 11 TYPICAL SECTIONS - BOWMAN AVE
- 12 - 15 SCHEDULE OF QUANTITIES
- 16 - 18 GEOMETRIC CONTROL SHEET
- 19 SURVEY TIES
- 20 - 30 BOWMAN AVE - PLAN AND PROFILE
- 31 BOWMAN AVE - DETOUR ROUTE
- 32 - 35 BOWMAN AVE - TEMPORARY EROSION CONTROL
- 36 - 37 LIBERTY LANE INTERSECTION
- 38 - 39 NEWELL ROAD INTERSECTION
- 40 ENTRANCE DETAILS - OVERLAY & WIDENING
- 41 ENTRANCE DETAILS - OVERLAY
- 42 - 43 MICELLANEOUS DETAILS
- 44 SHORT RADIUS GUARDRAIL DETAILS
- 45 - 69 BOWMAN AVE - CROSS SECTIONS

**LIST OF STANDARDS**

SEE GENERAL NOTES SHEET

# PROPOSED HIGHWAY PLANS

**F.A.U. ROUTE 7045(BOWMAN AVE.)  
CITY OF DANVILLE  
VERMILION COUNTY, ILLINOIS  
SECTION #09-00334-01-PV  
PROJECT # M-5016(040)  
CONTRACT # 91440  
JOB # C-95-330-10**



**DESIGN DESIGNATION:**  
 NORTH OF LIBERTY LANE - ADT = 6000  
 SOUTH OF LIBERTY LANE - ADT = 7000  
**FUNCTIONAL CLASSIFICATION:**  
 NORTH OF LIBERTY LANE = MAJOR COLLECTOR  
 SOUTH OF LIBERTY LANE = MINOR ARTERIAL  
**DESIGN SPEED = 55 mph**  
**GROSS LENGTH OF PROJECT = 15430 ft. (2.92 mi.)**  
**NET LENGTH OF PROJECT = 15178 ft. (2.87 mi.)**

SIGNATURE: *John M. Heyen*  
 DATE SIGNED: 04-14-2010  
 LIC. EXP. DATE: 11-30-2011

STATE OF ILLINOIS  
DEPARTMENT OF TRANSPORTATION

APPROVED *April 20 10*  
*R. David*  
CITY OF DANVILLE

PASSED *5/10 20 10*  
*D. A. Sol*  
DISTRICT 5 ENGINEER OF LOCAL ROADS AND STREETS

RELEASING FOR BID  
BASED ON LIMITED  
REVIEW

*May 10 20 2010*  
DEPUTY DIRECTOR OF HIGHWAYS, REGION 3 ENGINEER

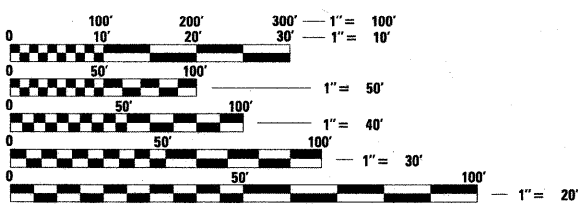
PROJECT MANAGER - JIM MOLL (217)788-2450  
PROJECT ENGINEER - MATT HEYEN (217)747-9260

**J.U.L.I.E.**  
**JOINT UTILITY LOCATION INFORMATION FOR EXCAVATION**  
 1-800-892-0123  
 OR 811



**UTILITY NOTE**

THE LOCATIONS OF THOSE BURIED AND ABOVEGROUND UTILITIES SHOWN ARE APPROXIMATE, ARE SHOWN FOR CONTRACTOR INFORMATIONAL USE ONLY, AND ARE NOT TO BE REFERENCED FOR CONSTRUCTION PURPOSES. THE IMPLIED PRESENCE OR ABSENCE OF UTILITIES IS NOT TO BE CONSTRUED BY THE OWNER, ENGINEER, CONTRACTOR, OR SUBCONTRACTORS TO BE AN ACCURATE AND COMPLETE REPRESENTATION OF UTILITIES THAT MAY OR MAY NOT EXIST ON THE CONSTRUCTION SITE. BURIED AND ABOVEGROUND UTILITY LOCATION, IDENTIFICATION, AND MARKING ARE THE SOLE RESPONSIBILITY OF THE CONTRACTOR. REROUTING, DISCONNECTION, PROTECTION, ETC. OF ANY UTILITIES MUST BE COORDINATED BETWEEN THE CONTRACTOR, UTILITY COMPANY, AND OWNER. SITE SAFETY, INCLUDING THE AVOIDANCE OF HAZARDS ASSOCIATED WITH BURIED AND ABOVEGROUND UTILITIES, REMAIN THE SOLE RESPONSIBILITY OF THE CONTRACTOR.



FULL SIZE PLANS HAVE BEEN PREPARED USING STANDARD ENGINEERING SCALES. REDUCED SIZED PLANS WILL NOT CONFORM TO STANDARD SCALES. IN MAKING MEASUREMENTS ON REDUCED PLANS, THE ABOVE SCALES MAY BE USED.

LAYOUT: RS, 07/13/09  
 DRAWN: RS, 07/13/09  
 REVIEWED: JMM, 12/18/09  
 04/14/2010  
 04/06/2010  
 02/22/2010