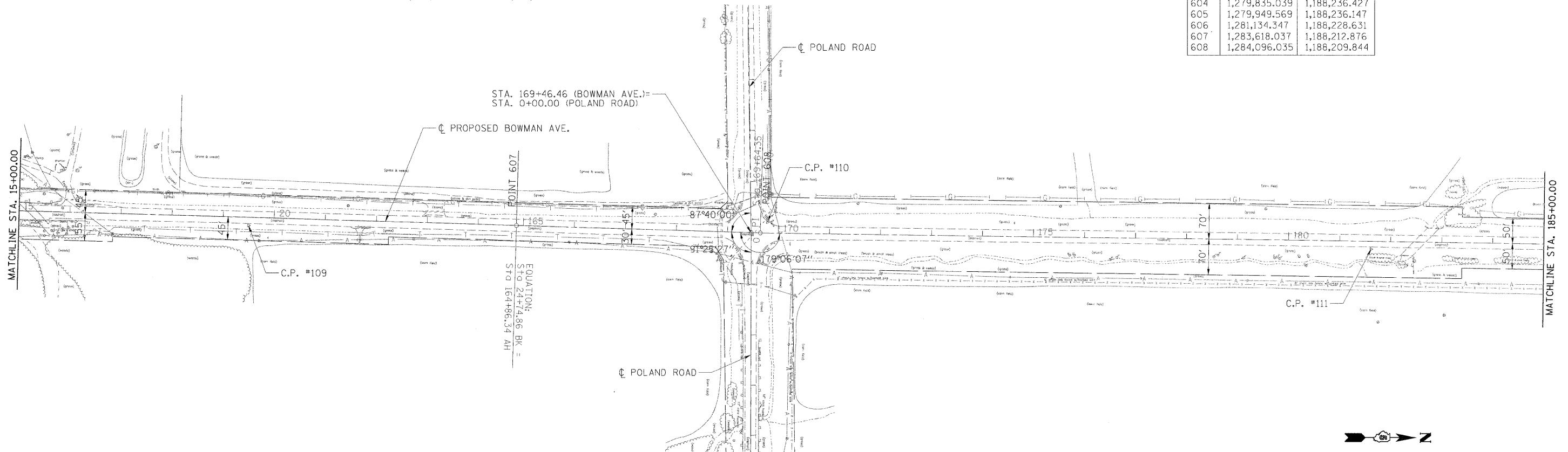


EXISTING STRUCTURE # 092-0186
 152.3' BK TO BK ABUTS, 45° SKEW
 BK S. ABUT = STA. 13+84.44
 BK N. ABUT = STA. 15+36.76
 50' APPROACH PAVEMENT TYP.

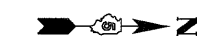
CONTROL POINTS

POINT	DESCRIPTION	STATION	OFFSET	ELEVATION	NORTHING	EASTING
C.P. #107	MAG NAIL	138+16.45	21.69' RT	666.19'	1,280,948.346	1,188,251.499
C.P. #108	REBAR	09+46.26	15.56' RT	641.61'	1,282,089.568	1,188,238.137
C.P. #109	REBAR	19+49.93	15.88' LT	653.86'	1,283,093.221	1,188,232.082
C.P. #110	MAG NAIL	169+78.21	21.26' LT	644.32'	1,284,109.429	1,188,188.279
C.P. #111	REBAR	181+61.96	15.32' LT	647.91'	1,285,293.696	1,188,198.799

POINT	NORTHING	EASTING
604	1,279,835.039	1,188,236.427
605	1,279,949.569	1,188,236.147
606	1,281,134.347	1,188,228.631
607	1,283,618.037	1,188,212.876
608	1,284,096.035	1,188,209.844



STA. 169+46.46 (BOWMAN AVE.) =
 STA. 0+00.00 (POLAND ROAD)



I:\08\jobs\08L0221\CADD\Road\Sheet\09003401PV\c-101_geometrics.dgn USER NAME = Johns0944 PLOT SCALE = 100.0000' / in. PLOT DATE = 04/14/2010	DESIGNED - m.heyen DRAWN - r.johnson CHECKED - m.heyen DATE - 3/26/2010	REVISED - REVISED - REVISED - REVISED -	STATE OF ILLINOIS DEPARTMENT OF TRANSPORTATION	GEOMETRIC CONTROL SHEET			F.A.S. RTE. 500 SECTION 09-00334-01-PV COUNTY VERMILION JOB NO. C-95-330-10 FED. ROAD DIST. NO. ILLINOIS FED. AID PROJECT	TOTAL SHEETS 69 SHEET NO. 17 CONTRACT NO. 91440
	SCALE: 1"=100' SHEET NO. OF SHEETS STA. TO STA.							