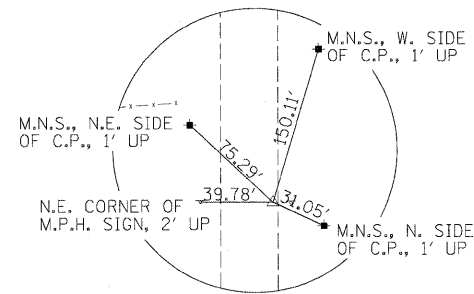


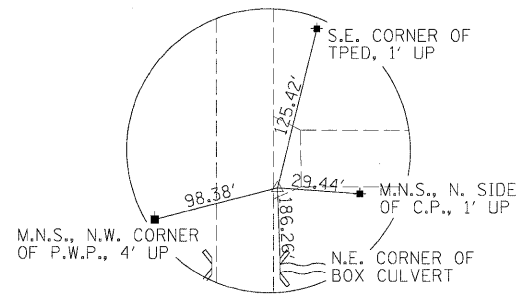
© Copyright Hanson Professional Services Inc. 2010
HANSON



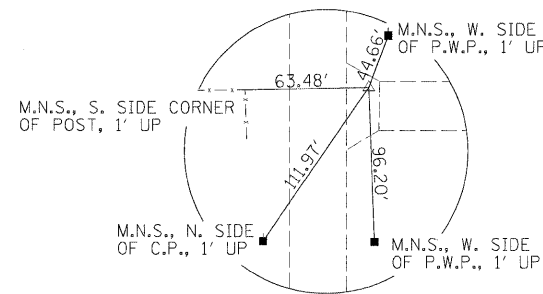
NORTH ARROW SHOWN FOR ALL TIES



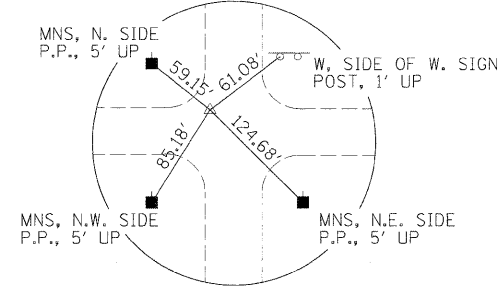
C.P. #101
STA. 70+68.47
16.79' RT
N-1,274,209.318
E-1,188,495.563



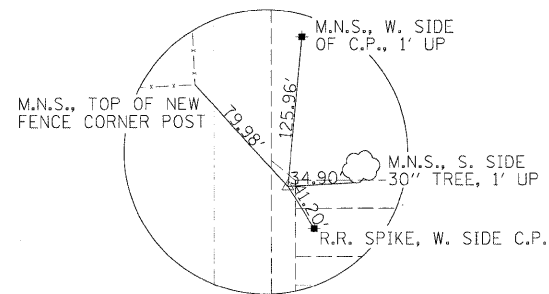
C.P. #104
STA. 102+94.51
18.17' RT
N-1,277,427.341
E-1,188,298.287



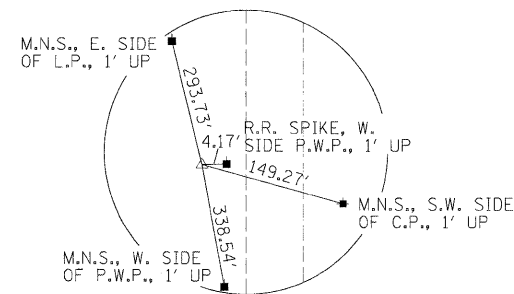
C.P. #107
STA. 138+16.45
21.69' RT
N-1,280,948.346
E-1,188,251.499



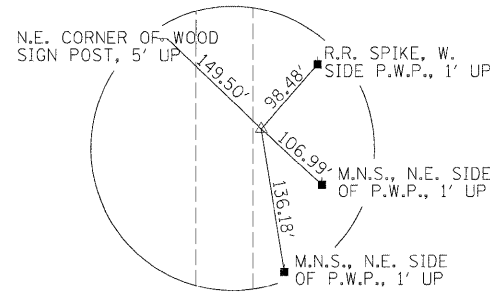
C.P. #110
STA. 169+78.21
21.26' LT
N-1,284,109.429
E-1,188,188.279



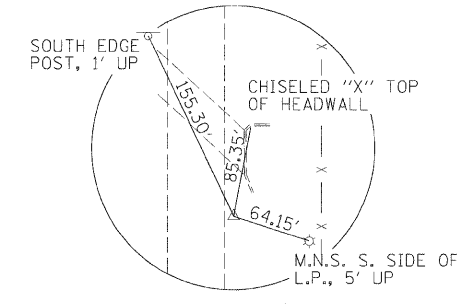
C.P. #102
STA. 80+04.92
17.76' RT
N-1,275,142.404
E-1,188,416.307



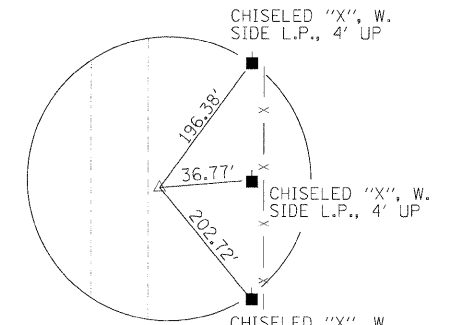
C.P. #105
STA. 112+65.18
54.30 LT
N-1,278,395.721
E-1,188,197.782



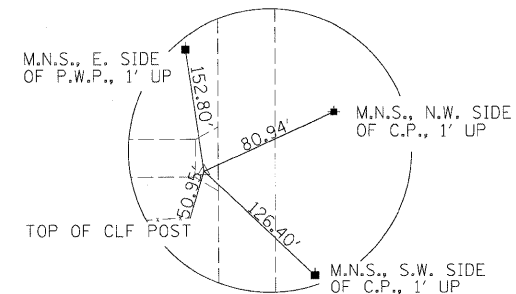
C.P. #108
STA. 09+46.26
15.56' RT
N-1,282,809.568
E-1,188,238.137



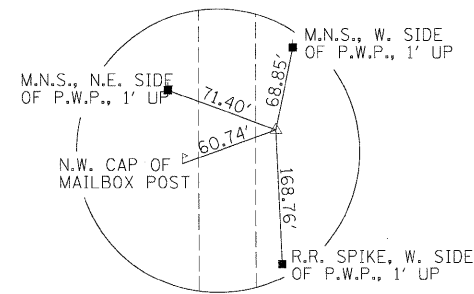
C.P. #111
STA. 181+61.96
15.32' RT
N-1,285,293.696
E-1,188,198.799



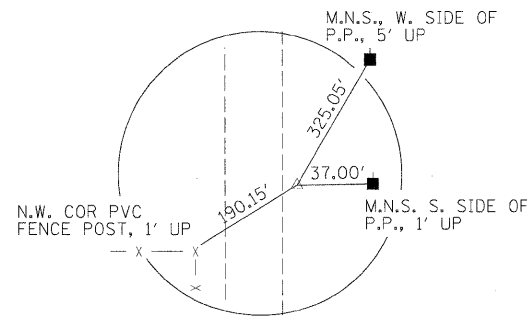
C.P. #113
STA. 208+42.90
13.97' RT
N-1,287,973.953
E-1,188,138.418



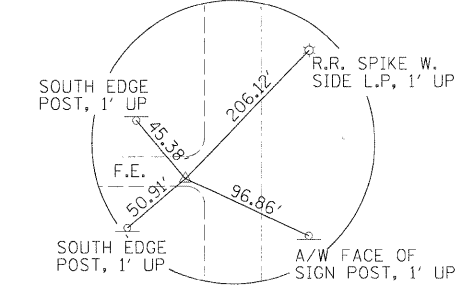
C.P. #103
STA. 92+14.76
18.59' LT
N-1,276,346.799
E-1,188,294.552



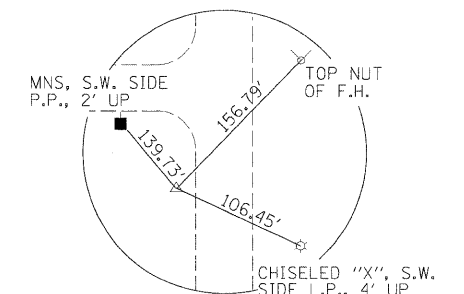
C.P. #106
STA. 124+71.48
31.01 RT
N-1,279,603.453
E-1,188,268.846



C.P. #109
STA. 19+49.93
15.88' RT
N-1,283,093.221
E-1,188,232.082



C.P. #112
STA. 195+83.78
19.25' RT
N-1,286,714.412
E-1,188,132.931



C.P. #114
STA. 220+87.49
42.37' LT
N-1,289,217.259
E-1,188,055.311

USER NAME = Johns00944
DESIGNED - m.heyen
DRAWN - r.johnson
CHECKED - m.heyen
DATE - 3/26/2010

REVISIONS
REVISOR
DATE

**STATE OF ILLINOIS
DEPARTMENT OF TRANSPORTATION**

SURVEY TIES
SCALE: N.T.S. SHEET NO. OF SHEETS STA. TO STA.

F.A.S. RTE.	SECTION	COUNTY	TOTAL SHEETS	SHEET NO.
500	09-00334-01-PV	VERMILION	69	19
JOB NO. C-95-330-10		CONTRACT NO. 91440		
FED. ROAD DIST. NO.		ILLINOIS FED. AID PROJECT		