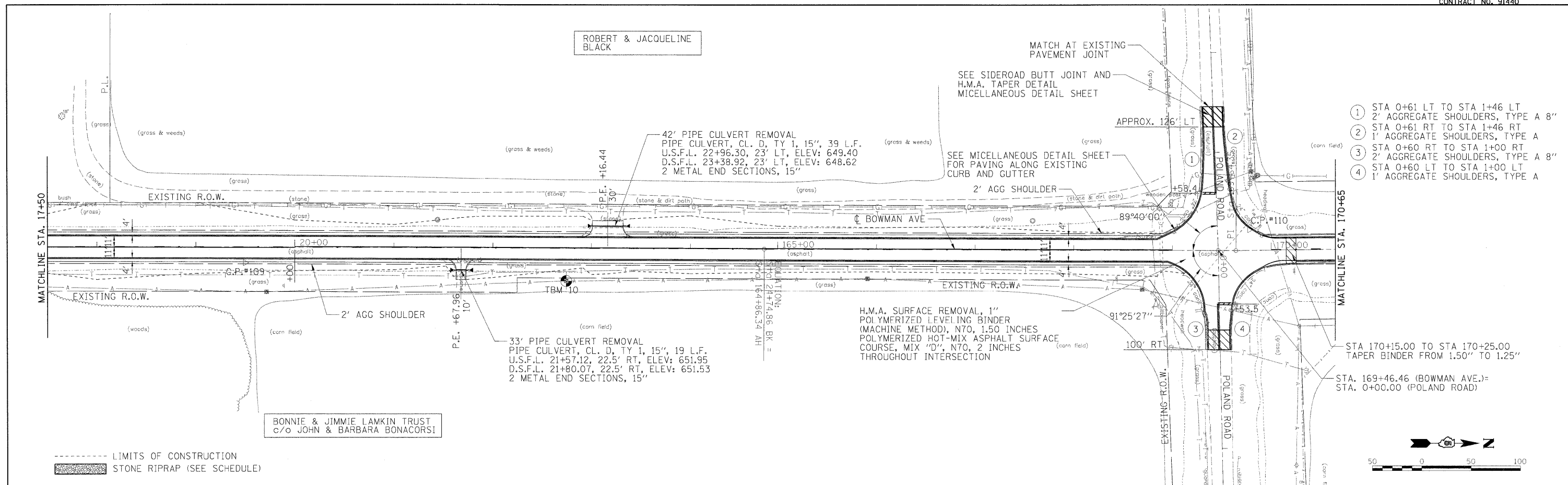


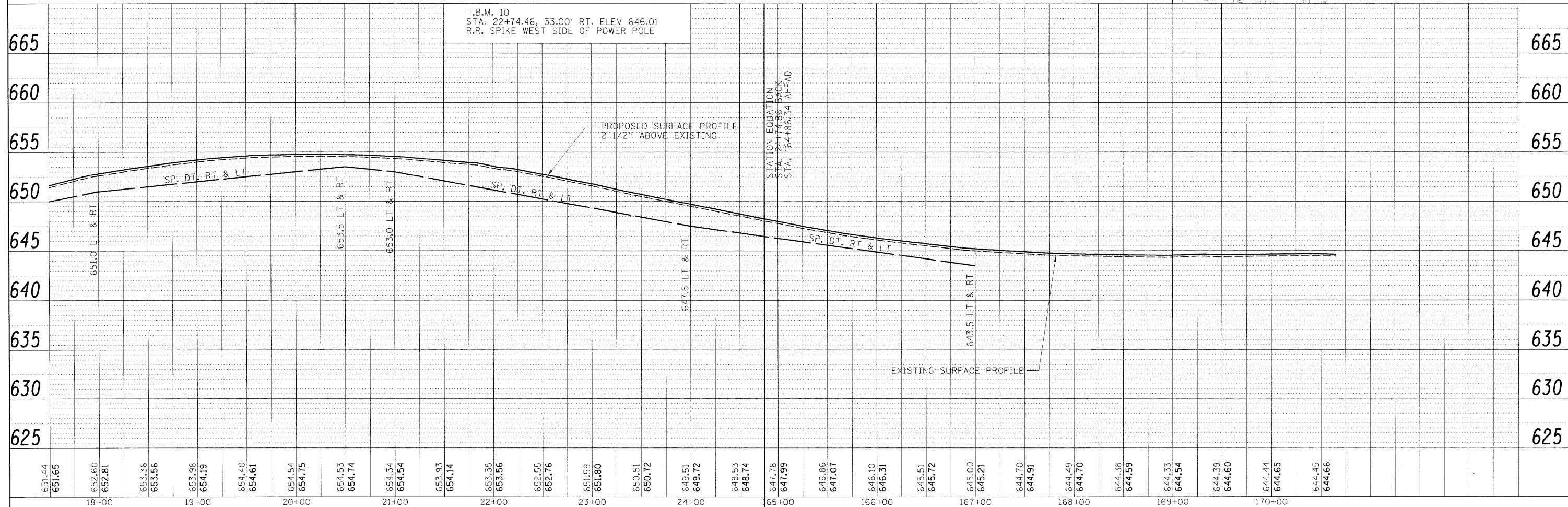
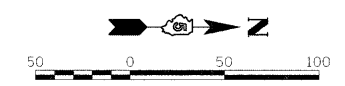
DATE	
BY	
PLANNED	
DESIGNED	
CHECKED	
NOTED	
DATE	
BY	
PLANNED	
DESIGNED	
CHECKED	
NOTED	
DATE	
BY	
PLANNED	
DESIGNED	
CHECKED	
NOTED	



DATE	
BY	
PROF. FILE	
NOTE BOOK	
NO.	
DATE	
BY	
PROF. FILE	
NOTE BOOK	
NO.	
DATE	
BY	
PROF. FILE	
NOTE BOOK	
NO.	



- ① STA 0+61 LT TO STA 1+46 LT
2' AGGREGATE SHOULDERS, TYPE A 8"
- ② STA 0+61 RT TO STA 1+46 RT
1' AGGREGATE SHOULDERS, TYPE A
- ③ STA 0+60 RT TO STA 1+00 RT
2' AGGREGATE SHOULDERS, TYPE A 8"
- ④ STA 0+60 LT TO STA 1+00 LT
1' AGGREGATE SHOULDERS, TYPE A



FILE NAME =	USER NAME = Johns0944	DESIGNED - m.heyen	REVISED -	STATE OF ILLINOIS DEPARTMENT OF TRANSPORTATION	BOWMAN AVE - PLAN AND PROFILE	F.A.S. RTE. 500	SECTION 09-00334-01-PV	COUNTY VERMILION	TOTAL SHEETS 69	SHEET NO. 26
1:\08\jobs\081\221\ACAD\Road\Sheet\090034\01PV-707_bowman.dgn	PLOT SCALE = 50.0000' / 1"	CHECKED - m.heyen	REVISED -			JOB NO. C-95-330-10	CONTRACT NO. 91440			
	PLOT DATE = 04/14/2010	DATE - 3/26/2010	REVISED -			ILLINOIS FED. AID PROJECT				
SCALE: 1"=50'										