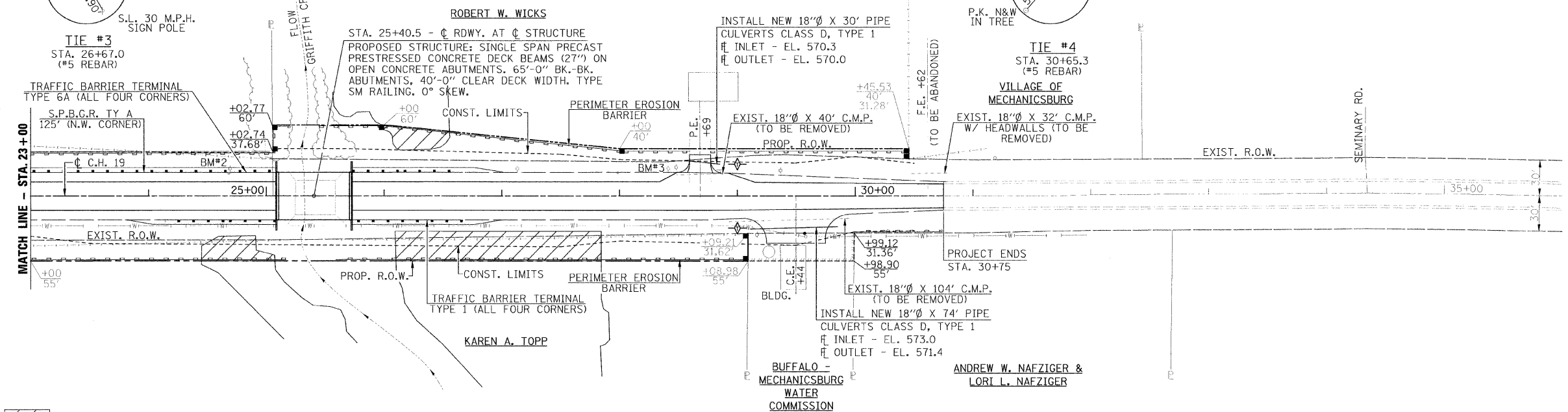
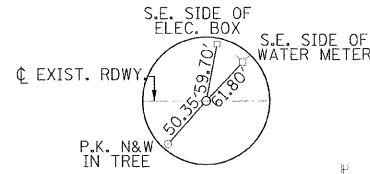
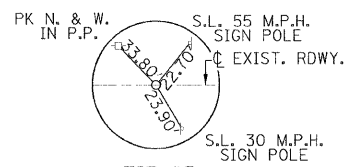
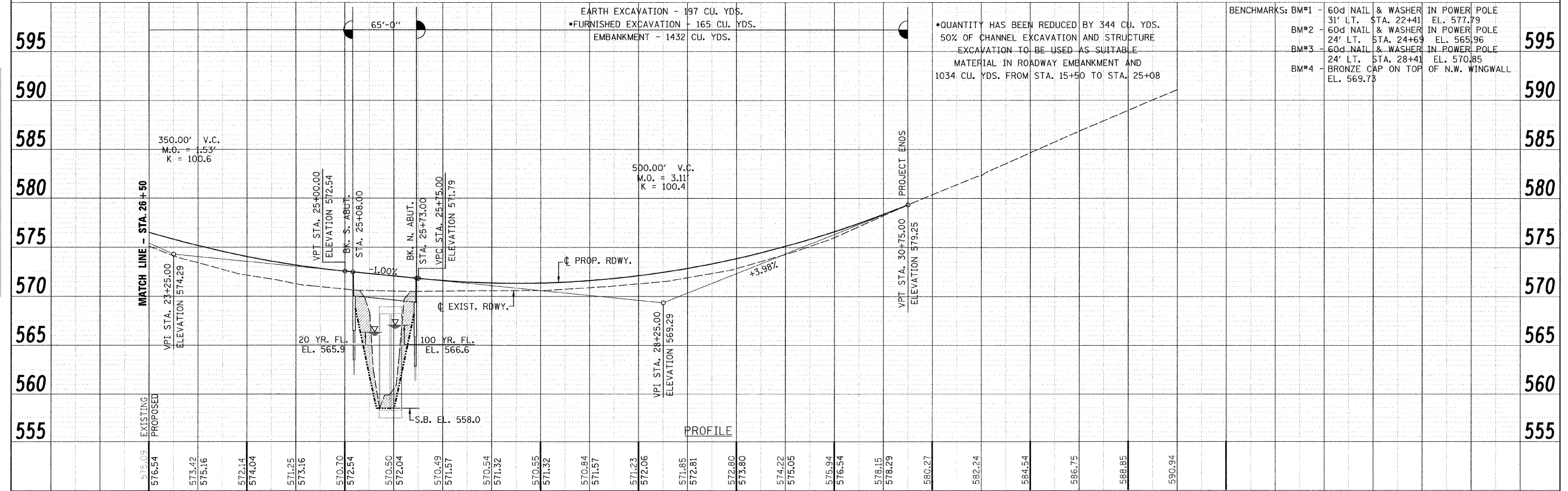
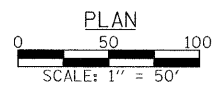


SECTION 26, T.16 N. R.3W. 3rd P.M.



- DENOTES IMPACTED WETLAND AREA
 - INDICATES TEMPORARY CONSTRUCTION EASEMENT



EARTH EXCAVATION - 197 CU. YDS.
 *FURNISHED EXCAVATION - 165 CU. YDS.
 EMBANKMENT - 1432 CU. YDS.

*QUANTITY HAS BEEN REDUCED BY 344 CU. YDS.
 50% OF CHANNEL EXCAVATION AND STRUCTURE EXCAVATION TO BE USED AS SUITABLE MATERIAL IN ROADWAY EMBANKMENT AND 1034 CU. YDS. FROM STA. 15+50 TO STA. 25+08

BENCHMARKS: BM#1 - 60d NAIL & WASHER IN POWER POLE 31' LT. STA. 22+41 EL. 577.79
 BM#2 - 60d NAIL & WASHER IN POWER POLE 24' LT. STA. 24+69 EL. 565.96
 BM#3 - 60d NAIL & WASHER IN POWER POLE 24' LT. STA. 28+41 EL. 570.85
 BM#4 - BRONZE CAP ON TOP OF N.W. WINGWALL EL. 569.75