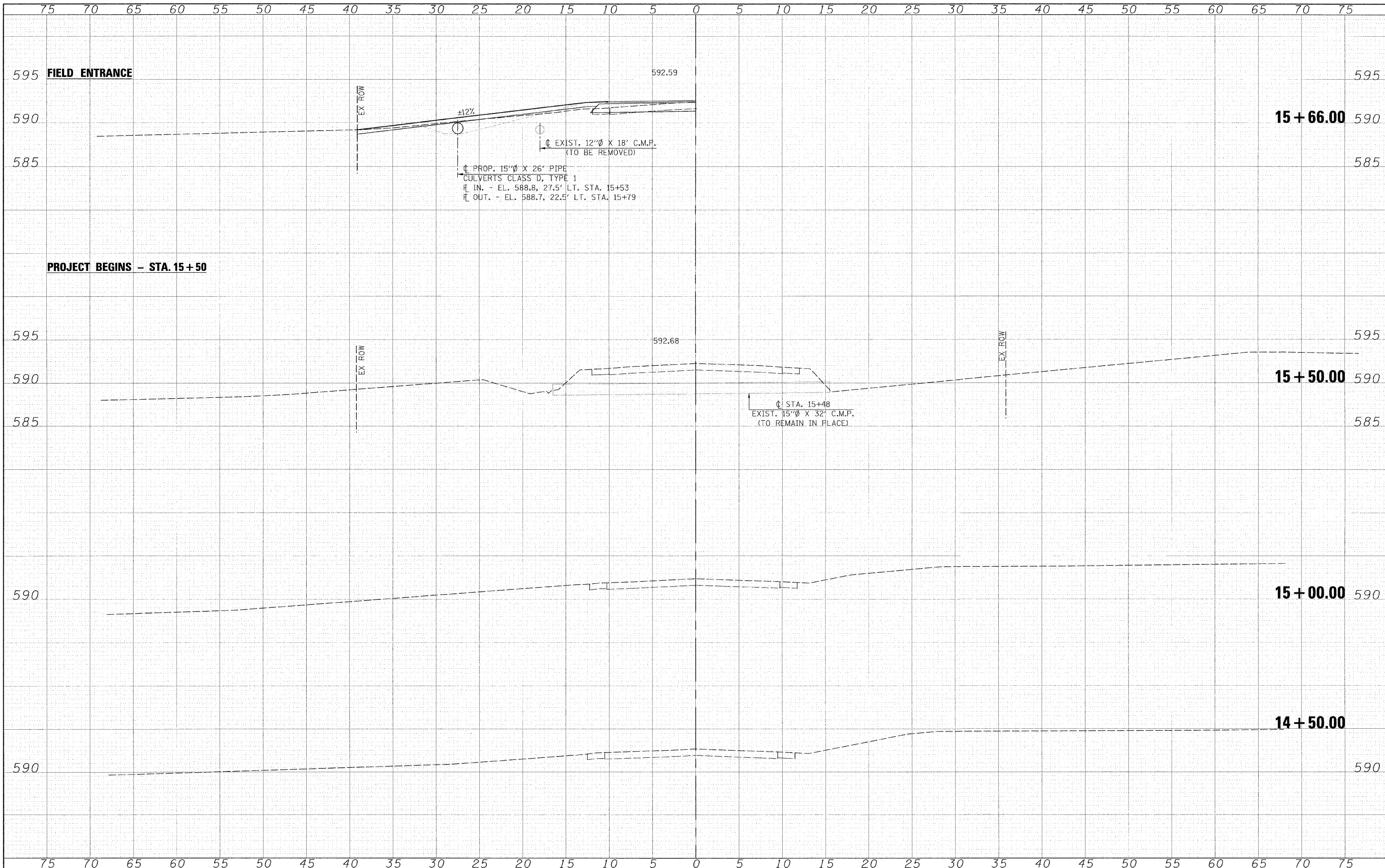


DATE	BY
DATE	BY
DATE	BY
DATE	BY
DATE	BY
DATE	BY
DATE	BY
DATE	BY
DATE	BY
DATE	BY

DATE	BY
DATE	BY
DATE	BY
DATE	BY
DATE	BY
DATE	BY
DATE	BY
DATE	BY
DATE	BY
DATE	BY



FILE NAME -

USER NAME = #USER#

DESIGNED -
DRAWN -
CHECKED -
DATE -

REVISED
REVISED
REVISED
REVISED



Allen Henderson & Associates, Inc.
Civil and Structural Engineers Springfield, IL.
62703 Phone: (217)544-8033 IL Design Firm
No. 184-001907

CROSS SECTIONS
SCALE: 1" = 5'
SHEET NO. 14 OF 25 SHEETS
STA. 14+50.00 TO STA. 15+66.00

C.H. RTE.	SECTION	COUNTY	TOTAL SHEETS	SHEET NO.
19	07-00055-01-BR	SANGAMON	25	14
FED. ROAD DIST. NO.		ILLINOIS FED. AID PROJECT		