

**INDEX OF SHEETS**

- 1 - TITLE SHEET
- 2 - SUMMARY OF QUANTITIES & GENERAL NOTES
- 3 - DETAILS, & TYPICAL SECTIONS
- 4 - ENTRANCE DETAILS
- 5 - QUANTITY SCHEDULES
- 6 & 7 - PLAN & PROFILE
- 8 - GENERAL PLAN & ELEVATION
- 9 & 10 - SUPERSTRUCTURE
- 11 - RAILING
- 12 - ABUTMENTS
- 13 - HP PILE DETAILS
- 14-25 - CROSS SECTIONS

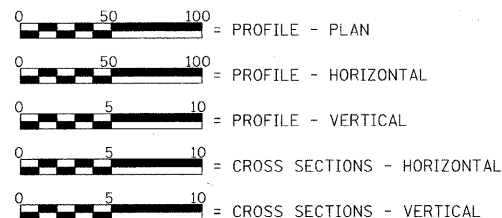
**STANDARDS**

- STANDARD 280001-05
- STANDARD 515001-03
- STANDARD 630001-08
- STANDARD 630301-05
- STANDARD 631032-05
- STANDARD 635006-03
- STANDARD 666001-01
- STANDARD 701011-02
- STANDARD 701901-01
- STANDARD BLR 21-8
- STANDARD BLR 24-2

**LIST OF UTILITIES**

- ATT  
529 S. 7TH STREET  
SPRINGFIELD, IL. 62721  
1-217-789-8376
- RURAL ELECTRIC CONVENIENCE  
COOPERATIVE COMPANY  
3973 W. STATE ROUTE 104  
P.O. BOX 19  
AUBURN, IL. 62615  
1-217-438-6197
- VERIZON  
1-800-892-0123
- MECHANICSBURG/BUFFALO WATER  
600 S. CHURCH STREET  
MECHANICSBURG, IL. 62545  
1-217-364-4687

**SCALE IN FEET**



LAND SECTION - 26 & 35  
LAND QUARTER SECTION - S.W. & N.W.  
FUNCTIONAL CLASSIFICATION: MAJOR COLLECTOR (NON-URBAN)  
A.D.T. - 600 (2007)  
A.D.T. - 1040 (2029)  
35 M.P.H. DESIGN SPEED

# STATE OF ILLINOIS DEPARTMENT OF TRANSPORTATION PLANS FOR PROPOSED HIGHWAY BRIDGE PROGRAM

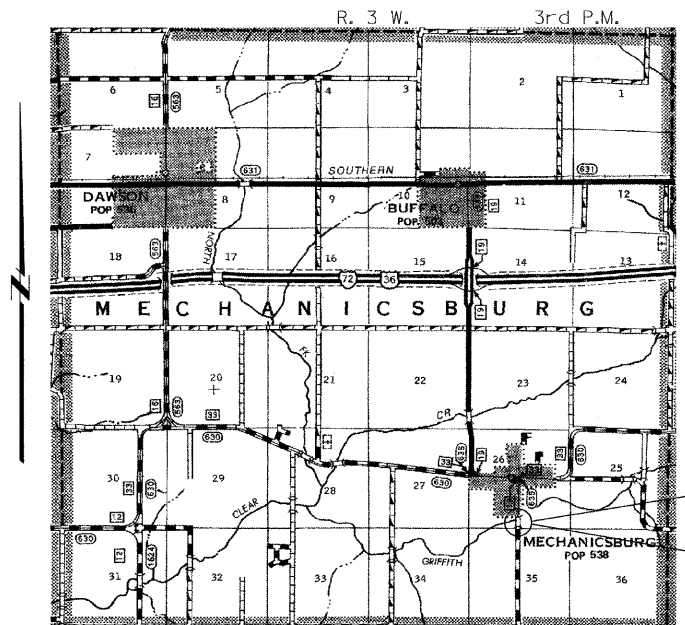
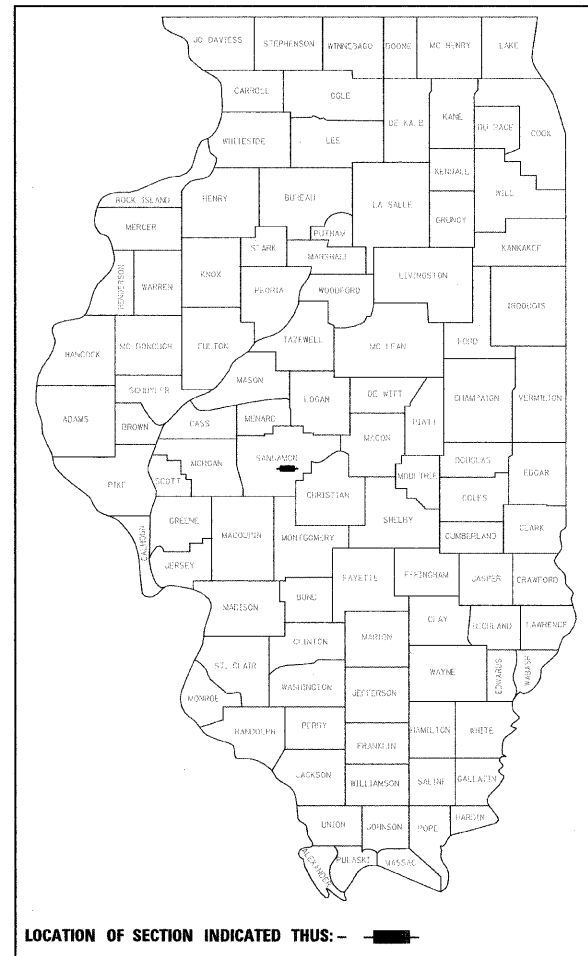
**F.A.S. ROUTE 635 (C.H. 19) OVER GRIFFITH CREEK**

**PROJECT NO. BRS-0635(107)**

**SECTION 07-00055-01-BR**

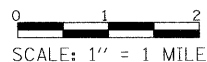
**SANGAMON COUNTY**

**C - 96-221-09**



**LOCATION PLAN**

LENGTH OF SECTION - 1525.00 FEET = 0.289 MILES



EXISTING STRUCTURE: CONCRETE ENCASED CORRUGATED METAL TWIN PIPE ARCH WITH A SPAN OF ±15'-0" AND A RISE OF ±6'-9" SUPPORTED ON CONCRETE FOOTINGS.  
EXISTING STRUCTURE NO. 084-2003.

PROPOSED STRUCTURE: SINGLE SPAN PRECAST PRESTRESSED CONCRETE DECK BEAM (27") BRIDGE ON OPEN CONCRETE ABUTMENTS. 40'-0" OUT. TO OUT. DECK. 65'-0" BK. TO BK. ABUTMENTS. STEEL RAILING TYPE SM. 0° SKEW.  
PROPOSED STRUCTURE NO. 084-3509.

PROJECT ENDS  
STA. 30+75.00

PROJECT BEGINS  
STA. 15+50.00



*Christopher P. Adams* 4/9/10  
EXPIRATION: 11/30/2021

APPROVED *April 9, 2010*  
*[Signature]*  
COUNTY ENGINEER

PASSED *April 27, 2010*  
*[Signature]*  
DISTRICT SIX ENGINEER OF LOCAL ROADS & STREETS

PASSED *April 26, 2010*  
*[Signature]*  
DISTRICT SIX CONSTRUCTION ENGINEER

Releasing For Bld Based on Limited Review *April 27, 2010*  
*[Signature]*  
DEPUTY DIRECTOR OF HIGHWAYS, REGION FOUR ENGINEER

STATE OF ILLINOIS  
DEPARTMENT OF TRANSPORTATION

TOLL FREE  
"JOINT UTILITY LOCATION INFORMATION FOR EXCAVATORS"  
(U.L.I.E.) TELEPHONE NUMBER  
1-800-892-0123

CONTRACT NO. 93483

FILE NAME #FILE#	USER NAME #USER#	DESIGNED DRAWN	REVISED REVISED	 <b>Allen Henderson &amp; Associates, Inc.</b> Civil and Structural Engineers Springfield, IL. 62703 Phone: (217)544-8033 IL Design Firm No. 184-001907	<b>TITLE SHEET</b> SCALE: 1" = 1 MILE SHEET NO. 1 OF 25 SHEETS STA. 15+50.00 TO STA. 30+75.00	C.H. RTE. 19	SECTION 07-00055-01-BR	COUNTY SANGAMON	TOTAL SHEETS 25	SHEET NO. 1	
						CONTRACT NO. 93483					
						FED. ROAD DIST. NO. ILLINOIS FED. AID PROJECT					

**PROPERTY OWNER ACCESS REQUIREMENT**

ACCESS MUST BE MAINTAINED TO ALL EXISTING PROPERTIES DURING CONSTRUCTION PER ARTICLE 107.09 UNLESS ARRANGEMENTS ARE MADE IN WRITING BY THE CONTRACTOR WITH THE PROPERTY OWNERS WITH A COPY TO THE ENGINEER FOR SHORT-TERM CLOSURES.

**GENERAL NOTES**

- 1.) THE THICKNESS OF HOT-MIX ASPHALT MIXTURES SHOWN ON THE PLANS IS THE NOMINAL THICKNESS. DEVIATIONS FROM THE NOMINAL THICKNESS WILL BE PERMITTED WHEN SUCH DEVIATIONS OCCUR DUE TO IRREGULARITIES IN THE EXISTING SURFACE OR BASE ON WHICH THE BITUMINOUS MIXTURE IS PLACED.
- 2.) EXCEPT AS NOTED IN THE PLANS, PAVEMENT GRADES SHOWN ARE AT THE TOP OF PAVEMENT SURFACES.
- 3.) WHERE SECTION OR SUBSECTION MONUMENTS ARE ENCOUNTERED, THE ENGINEER SHALL BE NOTIFIED BEFORE SUCH MONUMENTS ARE REMOVED. THE CONTRACTOR SHALL PROTECT AND CAREFULLY PRESERVE ALL PROPERTY MARKERS AND MONUMENTS UNTIL THE OWNER OR AN AUTHORIZED SURVEYOR OR AGENT HAS WITNESSED OR OTHERWISE REFERENCED THEIR LOCATION. THE CONTRACTOR WILL BE RESPONSIBLE FOR HAVING AN AUTHORIZED SURVEYOR RE-ESTABLISH ANY SECTION OR SUBSECTION MONUMENTS DESTROYED BY HIS OPERATIONS.
- 4.) SEEDING WILL NOT BE PERMITTED AT ANY TIME WHEN THE GROUND IS FROZEN, WET OR IN AN UNTILLABLE CONDITION. AREAS TO BE SEEDED SHALL BE DETERMINED BY THE ENGINEER AND SEEDED AS SOON AS POSSIBLE.
- 5.) ALL SAW CUTS, NECESSARY TO COMPLETE THE WORK DETAILED IN THESE PLANS, SHALL BE INCLUDED IN THE COST FOR THE VARIOUS PAY ITEMS INVOLVED. THE MINIMUM SAW CUT DEPTH IN THE PAVEMENT SHALL BE 1/2" UNLESS UNLESS OTHERWISE SPECIFIED IN A DETAIL SHOWN IN THE PLANS.
- 6.) UNLESS DIRECTED BY THE ENGINEER, PAVEMENT MARKING LINES SHALL NOT BE LAID DIRECTLY OVER A LONGITUDINAL CRACK OR JOINT NOR OVER A TAR OR ASPHALT PAINTED LINE. THE EDGE OF A CENTERLINE OR LANE LINE SHALL BE OFFSET A MINIMUM DISTANCE OF 2" FROM A LONGITUDINAL CRACK OR JOINT. EDGE LINES SHALL BE APPROXIMATELY 2" FROM THE EDGE LINE OF PAVEMENT. SEE SECTION 780 OF THE STANDARD SPECIFICATIONS FOR TRAFFIC CONTROL ITEMS.
- 7.) ABANDONED UNDERGROUND UTILITIES THAT CONFLICT WITH CONSTRUCTION SHALL BE DISPOSED OUTSIDE THE LIMITS OF RIGHT OF WAY ACCORDING TO ARTICLE 202.03 OF THE STANDARD SPECIFICATIONS AND AS DIRECTED BY THE ENGINEER. THIS WORK WILL NOT BE PAID FOR SEPERATELY BUT SHALL BE INCLUDED IN THE COST PER CUBIC YARD FOR EARTH EXCAVATION AND NO ADDITIONAL COMPENSATION WILL BE ALLOWED.
- 8.) ANY REFERENCE TO A STANDARD IN THESE PLANS SHALL BE INTERPRETED TO MEAN THE EDITION AS INDICATED BY THE SUBNUMBER LISTED IN THE INDEX OF SHEETS OR THE COPY OF THE STANDARD INCLUDED IN THESE PLANS.
- 9.) IN ADDITION TO THE FIELD SURVEYS, PLAN DIMENSIONS AND DETAILS RELATIVE TO THE EXISTING FACILITIES HAVE BEEN TAKEN FROM EXISTING PLANS AND ARE SUBJECT TO CONSTRUCTION VARIATIONS. IT SHALL BE THE CONTRACTOR'S RESPONSIBILITY TO VERIFY SUCH DIMENSIONS AND DETAILS IN THE FIELD. SUCH VARIATIONS SHALL NOT BE A CAUSE FOR ADDITIONAL COMPENSATION DUE TO CHANGE IN THE SCOPE OF WORK. HOWEVER, THE CONTRACTOR WILL BE PAID FOR THE QUANTITY ACTUALLY FURNISHED AT THE UNIT PRICE BID FOR THE WORK.
- 10.) THE EXISTING ROAD SIGNS THAT INTERFERE WITH CONSTRUCTION WILL BE REMOVED OR RELOCATED AS DIRECTED BY THE ENGINEER. AFTER THE CONSTRUCTION IS COMPLETED, THE CONTRACTOR WILL REPLACE THE SIGNS AS DIRECTED BY THE ENGINEER. THIS WORK WILL NOT BE PAID FOR SEPERATELY BUT SHALL BE CONSIDERED INCLUDED IN THE CONTRACT, AND NO COMPENSATION WILL BE ALLOWED.
- 11.) THE LOCATION OF ALL UTILITIES ARE BASED ON INFORMATION PROVIDED BY OTHERS AND IS INTENDED TO BE APPROXIMATE. IT SHALL BE THE CONTRACTOR'S RESPONSIBILITY TO COORDINATE HIS CONSTRUCTION ACTIVITIES WITH THE VARIOUS UTILITY OWNERS. ALL POTENTIAL CONFLICTS SHALL BE INVESTIGATED AND REMEDIAL ACTION TAKEN PRIOR TO INTERRUPTION OF THE CONTRACTOR'S PROGRESS.
- 12.) THE CONTRACTOR SHALL BE RESPONSIBLE FOR PROTECTING UTILITY PROPERTY FROM CONSTRUCTION OPERATIONS AS OUTLINED IN ARTICLE 107.31 OF THE STANDARD SPECIFICATIONS. THE J.U.L.I.E. NUMBER IS 800-892-0123. A MINIMUM OF FORTY-EIGHT HOURS ADVANCE NOTICE IS REQUIRED.
- 13.) ALL ELEVATIONS SHOWN ON THE PLANS ARE BASED ON U.S.G.S. MEAN SEA LEVEL DATUM. ALL STATION AND OFFSET REFERENCES ARE TO THE ROADWAY CENTERLINE UNLESS OTHERWISE NOTED.
- 14.) THE SANGAMON COUNTY ENGINEER SHALL BE NOTIFIED AT LEAST 21 DAYS PRIOR TO CLOSING THE ROAD TO TRAFFIC (PH: 217-535-3070).

THE FOLLOWING RATES OF APPLICATION HAVE BEEN USED TO CALCULATE THE PLAN QUANTITIES:

BITUMINOUS MATERIALS (PRIME COAT)	0.375 GAL/SQ.YD. (ON AGG)
HOT MIX ASPHALT SURFACE / BINDER	0.056 TON/SQ. YD. PER 1"
AGGREGATE MATERIAL	2.05 TON/CU. YD.
RIPRAP	1.5 TON/CU. YD.
NITROGEN FERTILIZER NUTRIENT	90 LBS./ACRE
PHOSPHOROUS FERTILIZER NUTRIENT	90 LBS./ACRE
POTASSIUM FERTILIZER NUTRIENT	90 LBS./ACRE
AGGREGATE PRIME COAT	0.002 TON/SQ. YD.
AGRICULTURAL GROUND LIMESTONE	2.0 TON/ACRE

**MIXTURE REQUIREMENTS**

MIXTURE USE(S)	HOT MIX ASPHALT SURFACE COURSE, MIX "C", N50	HOT MIX ASPHALT BINDER COURSE IL. 19.0
AC/PG	PG 64-22	PG 64-22
DESIGN AIR VOIDS	4.0% @ N DESIGN = 50	4.0% @ N DESIGN = 50
MIXTURE COMPOSITION	IL 9.5 OR 12.5	IL 19.0
FRICITION AGGREGATE	MIX C	N/A

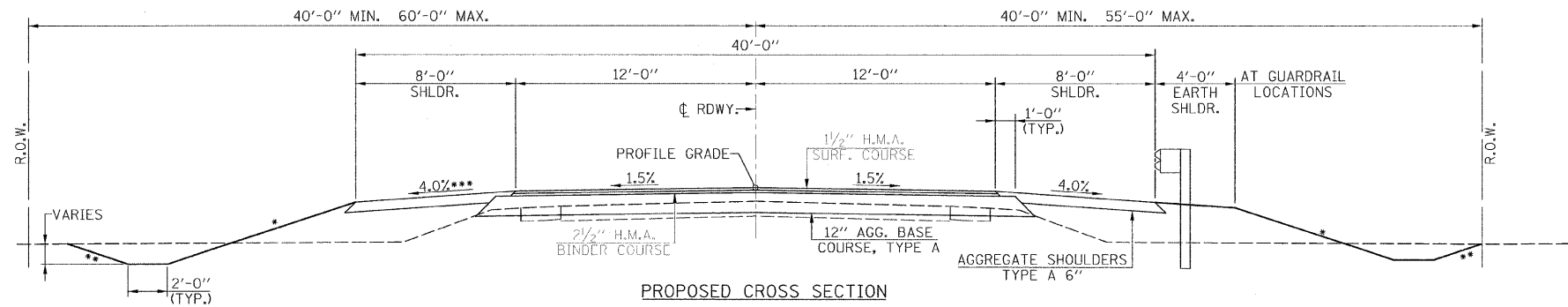
**SUMMARY OF QUANTITIES**

	ITEM	UNIT	QUANTITY
20100500	TREE REMOVAL, ACRES	ACRE	0.1
20200100	EARTH EXCAVATION	CU. YD.	3744
20300100	CHANNEL EXCAVATION	CU. YD.	542
20400800	FURNISHED EXCAVATION	CU. YD.	165
25001000	SEEDING, CLASS 2 (SPECIAL)	ACRE	1.7
25100630	EROSION CONTROL BLANKET	SQ. YD.	308
28000250	TEMPORARY EROSION CONTROL SEEDING	POUND	170
28000305	TEMPORARY DITCH CHECKS	FOOT	64
28000400	PERIMETER EROSION BARRIER	FOOT	2847
28100807	STONE DUMPED RIPRAP, CLASS A4	TON	389
28102600	STONE RIPRAP DITCH	TON	461
28200200	FILTER FABRIC	SQ. YD.	578
35100100	AGGREGATE BASE COURSE, TYPE A	TON	2932
40600100	BITUMINOUS MATERIALS (PRIME COAT)	GALLON	1460
40603080	HOT MIX ASPHALT BINDER COURSE, IL-19.0 N50	TON	565
40603310	HOT MIX ASPHALT SURFACE COURSE, MIX C N50	TON	374
44000600	SIDEWALK REMOVAL	SQ. FT.	154
48100100	AGGREGATE SHOULDERS, TYPE A	TON	929
50100100	REMOVAL OF EXISTING STRUCTURES	EACH	1
50105220	PIPE CULVERT REMOVAL	FOOT	194
50200100	STRUCTURE EXCAVATION	CU. YD.	147
50300225	CONCRETE STRUCTURES	CU. YD.	43.2
50300280	CONCRETE ENCASEMENT	CU. YD.	4.2
50400505	PRECAST PRESTRESSED CONCRETE DECK BEAMS (27" DEPTH)	SQ. FT.	2547
50800105	REINFORCEMENT BARS	POUND	5030
50901050	STEEL RAILING, TYPE SM	FOOT	130
51201600	FURNISHING STEEL PILES HP 12X53	FOOT	480
51202305	DRIVING PILES	FOOT	480
51203600	TEST PILE STEEL HP 12X53	EACH	2
51500100	NAME PLATES	EACH	1
54200220	PIPE CULVERTS, CLASS D, TYPE 1 15"	FOOT	26
54200223	PIPE CULVERTS, CLASS D, TYPE 1 18"	FOOT	104
58100200	WATERPROOFING MEMBRANE SYSTEM	SQ. YD.	289
58300100	PORTLAND CEMENT MORTAR FAIRING COURSE	FOOT	144
63000001	STEEL PLATE BEAM GUARDRAIL TYPE A, 6 FOOT POSTS	FOOT	125
63100087	TRAFFIC BARRIER TERMINAL TYPE 6A	EACH	4
63100167	TRAFFIC BARRIER TERMINAL TYPE 1, (SPECIAL) TANGENT	EACH	4
66600105	FURNISHING AND ERECTING RIGHT OF WAY MARKERS	EACH	10
67100100	MOBILIZATION	L. SUM	1
70101700	TRAFFIC CONTROL AND PROTECTION	L. SUM	1
78001110	PAINT PAVEMENT MARKING - LINE 4"	FOOT	4580
78201000	TERMINAL MARKER - DIRECT APPLIED	EACH	4
XX000610	RELOCATE EXISTING MAILBOX	EACH	2
Z0022800	FENCE REMOVAL	FOOT	473

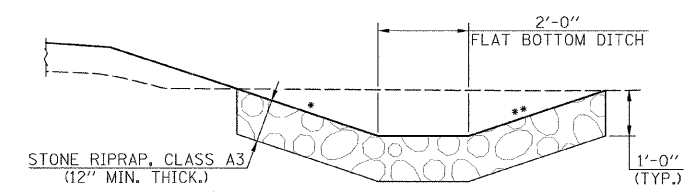
\* SEE SPECIAL PROVISIONS

CONSTRUCTION TYPE CODE: X080-2A

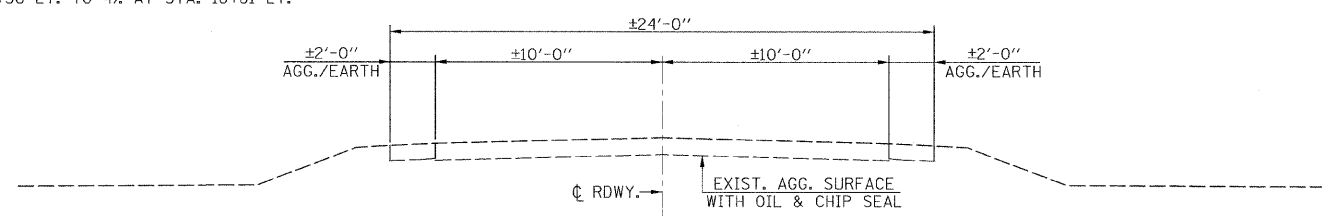
△ SPECIALTY ITEMS



- \* 4:1 < 10'
- 3:1 (MIN.) 1:6 (MAX.) > 10' OR AT GUARDRAIL LOCATIONS
- \*\* 3:1 < 10'
- 2:1 > 10' OR 2.5:1 AT SELECT LOCATIONS TO STAY WITHIN THE R.O.W.
- \*\*\* TRANSITION SHOULDER SLOPE  
4% AT STA. 17+91.5 LT. TO 1.5% AT STA. 18+16.5 LT.  
1.5% AT STA. 18+56 LT. TO 4% AT STA. 18+81 LT.

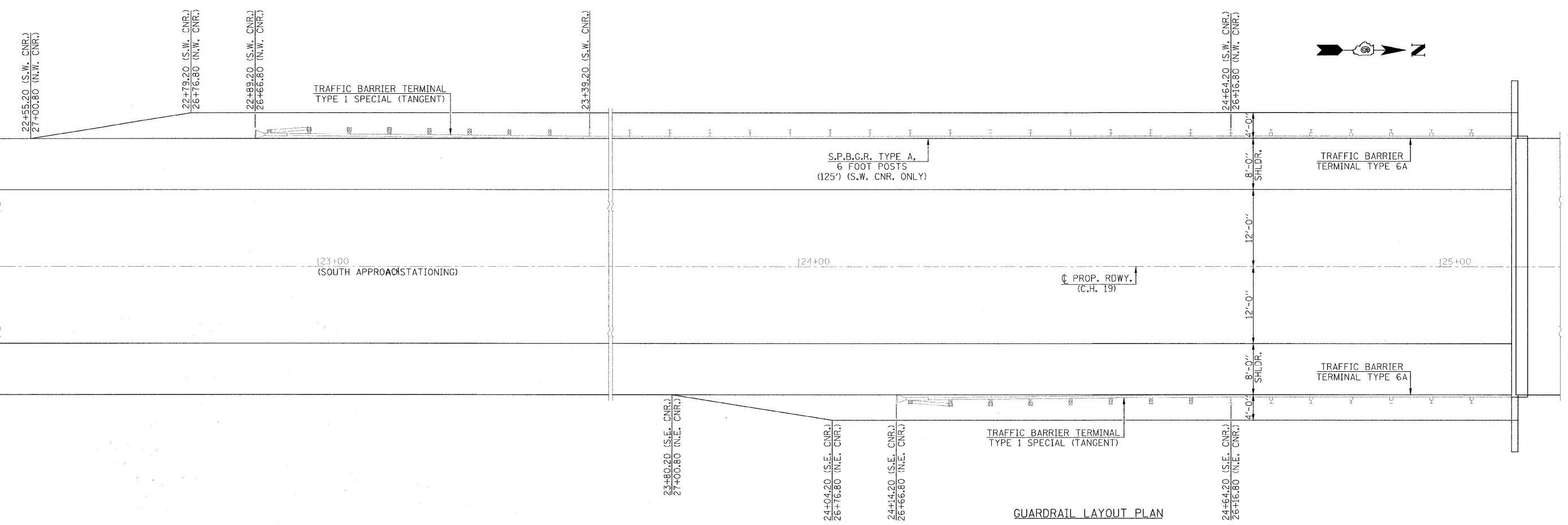


**STONE RIPRAP DITCH DETAIL**  
 (STA. 19+50 TO STA. 22+75 LT. STA. 19+50 TO STA. 23+25 RT. & STA. 28+25 TO STA. 30+75 LT. & RT.)



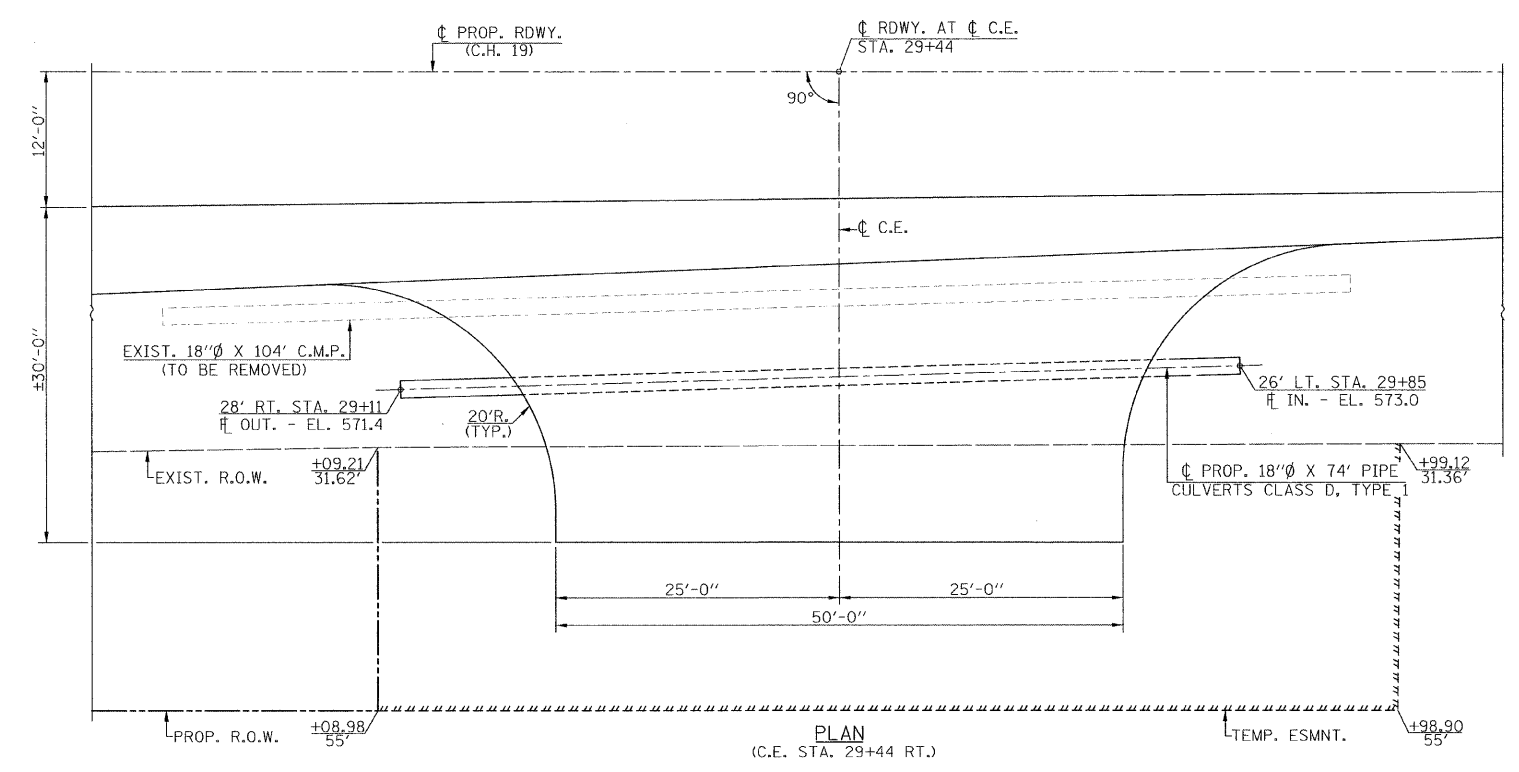
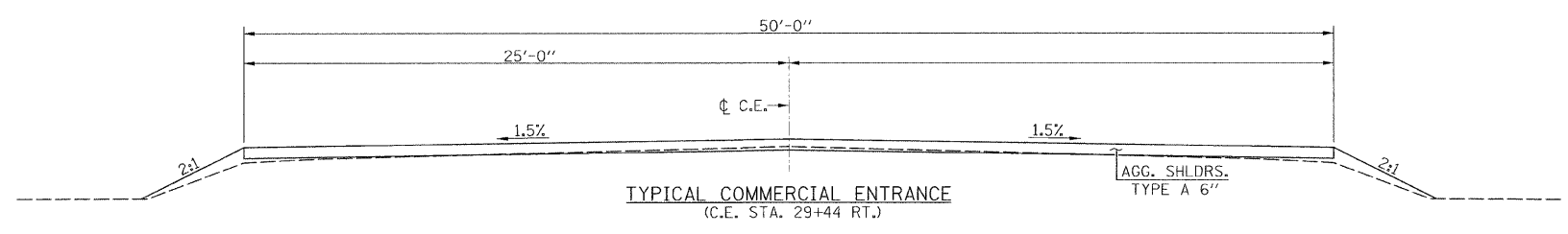
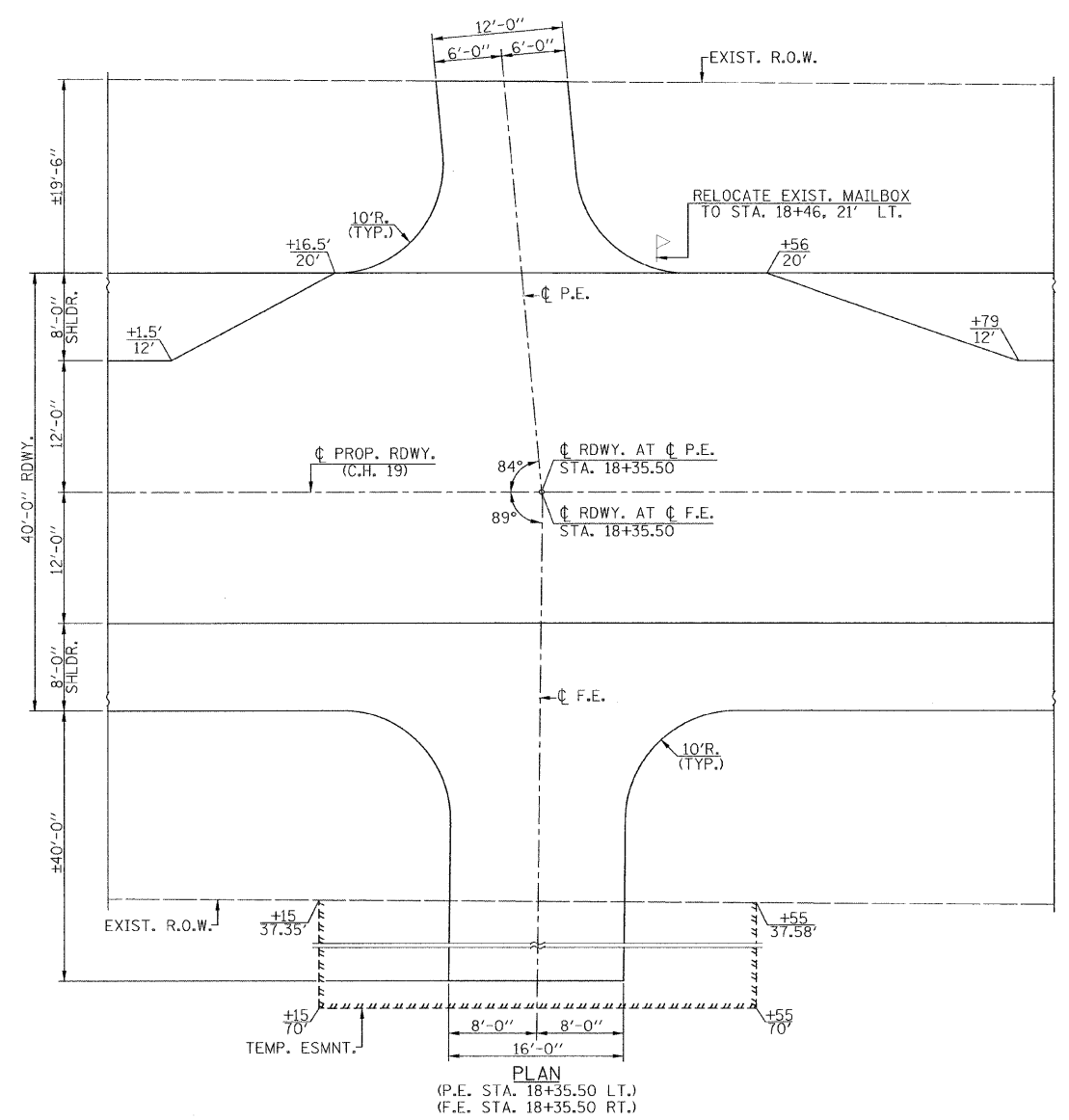
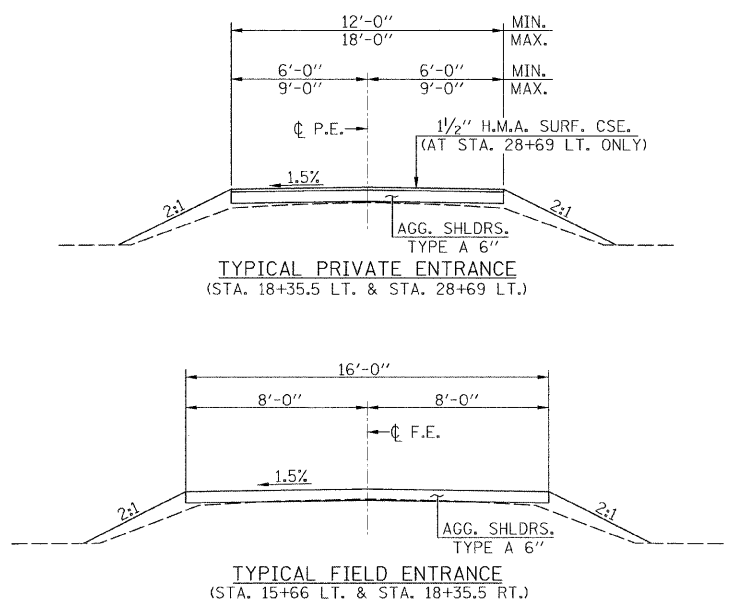
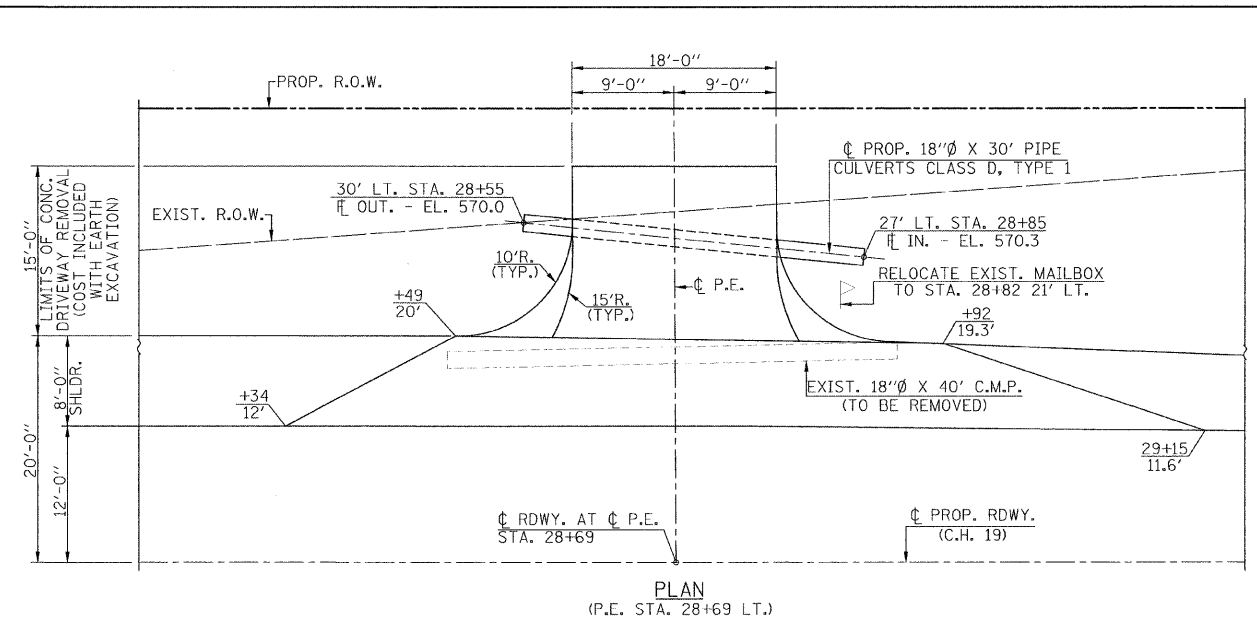
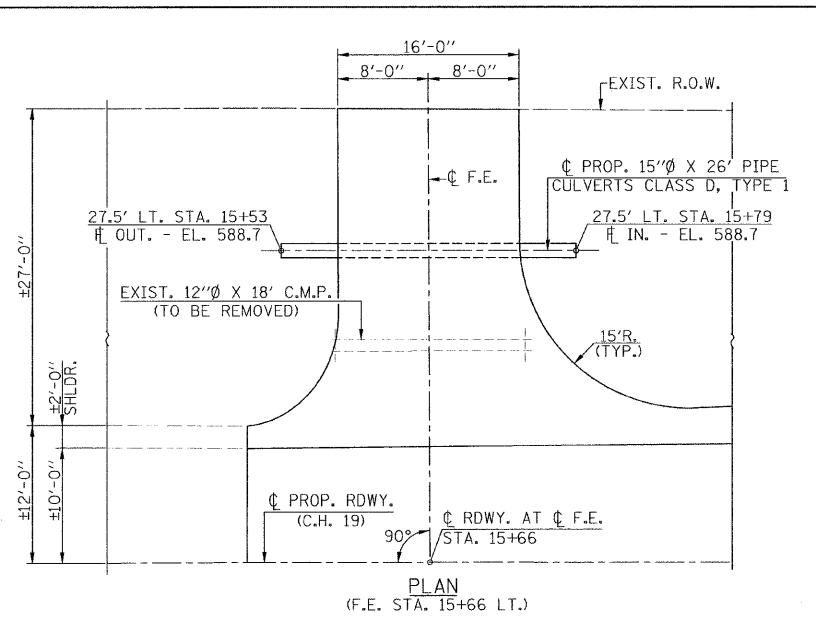
**EXISTING CROSS SECTION**

**PAVEMENT DESIGN - 80000# DESIGN LOAD**  
 STRUCTURAL DESIGN TRAFFIC (S.D.T.): YEAR 2020; P.V.=797  
 S.U.=106 M.U.=106  
 CLASS III ROAD  
 T.F. = 0.52 > 0.25 (USE MODIFIED AASHTO DESIGN)  
 I.B.V. = I.B.R. = 7  
 S.N.f = 3.06  
 TYPICAL PROPOSED ROADWAY SECTION:  
 PROPOSED HMA BINDER & SURFACE COURSE --- 4"  
 PROPOSED AGGREGATE BASE COURSE, TYPE A --- 12"



**GUARDRAIL LAYOUT PLAN**

FILE NAME =	USER NAME = #USER#	DESIGNED -	REVISED -	<b>Allen Henderson &amp; Associates, Inc.</b> Civil and Structural Engineers Springfield, IL. 62703 Phone: (217)544-8033 IL Design Firm No. 184-001907	<b>DETAILS &amp; TYPICAL SECTIONS</b>			C.H. RTE.	SECTION	COUNTY	TOTAL SHEETS	SHEET NO.
FILE#	PLOT SCALE = #SCALE#	CHECKED -	REVISED -					19	07-00055-01-BR	SANGAMON	25	3
	PLOT DATE = #DATE#	DATE -	REVISED -		SCALE: NONE	SHEET NO. 3 OF 25 SHEETS	STA. 7+75.00 TO STA. 13+05.00	CONTRACT NO. 93483				
							FED. ROAD DIST. NO. - ILLINOIS FED. AID PROJECT					



FILE NAME =	USER NAME = #USER#	DESIGNED -	REVISED -	<b>Allen Henderson &amp; Associates, Inc.</b> Civil and Structural Engineers Springfield, IL. 62703 Phone: (217)544-8033 IL Design Firm No. 184-001907	<b>ENTRANCE DETAILS</b>	C.H. RTE.	SECTION	COUNTY	TOTAL SHEETS	SHEET NO.	
#FILEL#		DRAWN -	REVISED -			19	07-00055-01-BR	SANGAMON	25	4	
PLOT SCALE = #SCALE#		CHECKED -	REVISED -			CONTRACT NO. 32223					
PLOT DATE = #DATE#		DATE -	REVISED -			SCALE: NONE	SHEET NO. 4 OF 25 SHEETS	STA. 7+75.00 TO STA. 13+05.00	FED. ROAD DIST. NO. ILLINOIS FED. AID PROJECT		

**EARTHWORK SCHEDULE**

LOCATION	EARTH EXCAVATION	EARTH EXCAVATION ADJUSTED FOR SHRINKAGE	EMBANKMENT	EARTHWORK BALANCE WASTE (+) OR SHORTAGE (-)
	CU. YD.	CU. YD.	CU. YD.	CU. YD.
STA. 15+50 TO STA. 16+00	48	36	11	25
STA. 16+00 TO STA. 17+00	332	249	13	236
STA. 17+00 TO STA. 18+00	676	507	0	507
STA. 18+00 TO STA. 19+00	731	548	0	548
STA. 19+00 TO STA. 20+00	735	551	0	551
STA. 20+00 TO STA. 21+00	610	458	8	450
STA. 21+00 TO STA. 22+00	369	277	46	231
STA. 22+00 TO STA. 23+00	46	34	218	-184
STA. 23+00 TO STA. 24+00	0	0	661	-661
STA. 24+00 TO STA. 25+00	0	0	866	-866
STA. 25+00 TO STA. 25+08	0	0	62	-62
BRIDGE OMISSION - STA. 25+08 TO STA. 25+73				
STA. 25+73 TO STA. 26+00	1	1	113	-112
STA. 26+00 TO STA. 27+00	19	14	545	-531
STA. 27+00 TO STA. 28+00	28	21	435	-414
STA. 28+00 TO STA. 29+00	29	22	242	-220
STA. 29+00 TO STA. 30+00	52	39	68	-29
STA. 30+00 TO STA. 30+75	68	51	29	22
<b>TOTAL</b>	<b>3744</b>	<b>2808</b>	<b>3317</b>	<b>+165</b>

\* NOTE: QUANTITY HAS BEEN REDUCED BY 344 CUBIC YARDS, 50% OF CHANNEL EXCAVATION AND STRUCTURE EXCAVATION TO BE USED AS SUITABLE MATERIAL IN ROADWAY EMBANKMENT.

**HOT MIX ASPHALT SCHEDULE**

LOCATION	HMA BINDER COURSE IL-19.0 N50 (TON)	HMA SURF. COURSE MIX C N50 (TON)	BIT. MATERIALS (PRIME COAT) (GALLON)
STA. 15+50 TO STA. 30+75	550	363	1460
STA. 18+35 LT. M.B. TURNOUT	7	4	
STA. 28+69 LT. M.B. TURNOUT	8	7	
<b>TOTAL</b>	<b>565</b>	<b>374</b>	<b>1460</b>

**AGGREGATE SCHEDULE**

LOCATION	AGG. BASE COURSE, TYPE A (TON)	AGG. SHOULDERS (TON)
STA. 15+50 TO STA. 30+75	2932	810
F.E. STA. 15+66 LT.		20
P.E. STA. 18+35.5 LT.		10
F.E. STA. 18+35.5 RT.		26
F.E. STA. 28+69 LT.		14
C.E. STA. 29+44 RT.		49
<b>TOTAL</b>	<b>2932</b>	<b>929</b>

**SCHEDULE TEMPORARY EROSION CONTROL SEEDING & SEEDING, CLASS 2 (SPECIAL)**

LOCATION	SEEDING CLASS 2 QUANTITY (ACRE)	TEMPORARY EROSION CONTROL SEEDING QUANTITY (POUND)
STA. 15+50 TO STA. 30+75 R.O.W. & EASEMENT LT.	0.7	70
STA. 19+00 TO STA. 29.09.3 R.O.W. & EASEMENT RT.	1.0	100
<b>TOTAL</b>	<b>1.7</b>	<b>170</b>

**SCHEDULE ERECTING RIGHT OF WAY MARKERS**

LOCATION	QUANTITY (FOOT)
STA. 19+38.18 38.05' RT.	1
STA. 19+38.11 55' RT.	1
STA. 25+02.74 37.68' LT.	1
STA. 25+02.77 60' LT.	1
STA. 26+00 60' LT.	1
STA. 28+00 40' LT.	1
STA. 29+08.98 55' RT.	1
STA. 29+09.21 31.62' RT.	1
STA. 30+45.53 31.28' & 40' LT.	2
<b>TOTAL</b>	<b>10</b>

**SCHEDULE PERIMETER EROSION BARRIER**

LOCATION	QUANTITY (FOOT)
STA. 15+50 LT. TO STA. 18+15 LT.	250
STA. 15+50 RT. TO STA. 18+15 RT.	265
STA. 18+15 LT. TO STA. 22+50 LT.	395
STA. 18+15 RT. TO STA. 19+00 RT.	105
STA. 22+50 LT. TO STA. 28+60 LT.	546
STA. 19+00 RT. TO STA. 29+20 RT.	996
STA. 28+80 LT. TO STA. 30+75 LT.	195
STA. 29+80 RT. TO STA. 30+75 RT.	95
<b>TOTAL</b>	<b>2847</b>

**SCHEDULE PAINT PAVEMENT MARKING-LINE 4"**

LOCATION	WHITE (FOOT)	YELLOW (FOOT)
STA. 15+50 TO STA. 30+75 RT. (SKIP DASH)		380
STA. 15+50 TO STA. 27+00 LT. (NO PASSING)		1150
STA. 15+50 TO STA. 30+75 RT. (EDGE)	3050	
<b>SUB-TOTAL</b>	<b>3050</b>	<b>1530</b>
<b>TOTAL</b>	<b>4580</b>	

**SCHEDULE TREE REMOVAL, ACRES**

LOCATION	QUANTITY (ACRE)
STA. 24+85 TO STA. 25+22 30' - 60' LT.	0.02
STA. 25+40 TO STA. 25+74 31' - 60' LT.	0.02
<b>TOTAL</b>	<b>0.04</b>

SAY 0.1 ACRE

**SCHEDULE FENCE REMOVAL**

LOCATION	QUANTITY (FOOT)
STA. 24+00 TO STA. 25+00 LT.	100
STA. 25+60 TO STA. 29+09 RT.	373
<b>TOTAL</b>	<b>473</b>

**SCHEDULE STEEL PLATE BEAM GUARDRAIL TYPE A, 6 FOOT POSTS**

LOCATION	QUANTITY (ACRE)
STA. 23+39.20 TO STA. 24+64.20	125
<b>TOTAL</b>	<b>125</b>

**SCHEDULE EROSION CONTROL BLANKET**

LOCATION	QUANTITY (SQ. YD.)
STA. 23+35 TO STA. 25+08 LT.	308
<b>TOTAL</b>	<b>308</b>

**SCHEDULE PIPE CULVERTS, CLASS D, TYPE 1**

LOCATION	QUANTITY (FOOT)	
	15"Ø	18"Ø
STA. 15+53 TO STA. 15+79 LT.	26	
STA. 28+55 TO STA. 28+85 LT.		30
STA. 29+11 TO STA. 29+85 RT.		74
<b>TOTAL</b>	<b>26</b>	<b>104</b>

**SCHEDULE SIDEWALK REMOVAL**

LOCATION	QUANTITY (SQ. FT.)
STA. 22+09 TO STA. 22+86 LT.	154
<b>TOTAL</b>	<b>154</b>

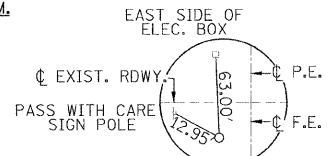
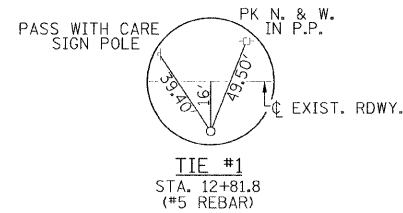
**SCHEDULE PIPE CULVERT REMOVAL**

LOCATION	QUANTITY (FOOT)
F.E. - STA. 15+58 TO STA. 15+76 LT. 12"Ø	18
P.E. - STA. 28+48 TO STA. 28+88 LT. 18"Ø	40
C.E. - STA. 28+90 TO STA. 29+94 RT. 18"Ø	104
F.E. - STA. 30+45 TO STA. 30+77 LT. 18"Ø	32
<b>TOTAL</b>	<b>194</b>

**SCHEDULE TEMPORARY DITCH CHECKS**

LOCATION	QUANTITY (FOOT)
STA. 17+00 27' LT. & 25' RT.	16
STA. 20+50 24' LT. & 24' RT.	16
STA. 22+00 27' LT. & 27' RT.	16
STA. 29+00 27' LT. & 27' RT.	16
<b>TOTAL</b>	<b>64</b>

SECTION 26, T.16 N. R.3W. 3rd P.M.

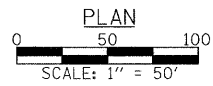
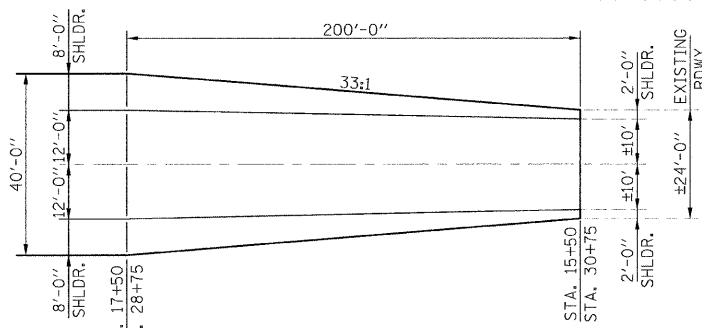
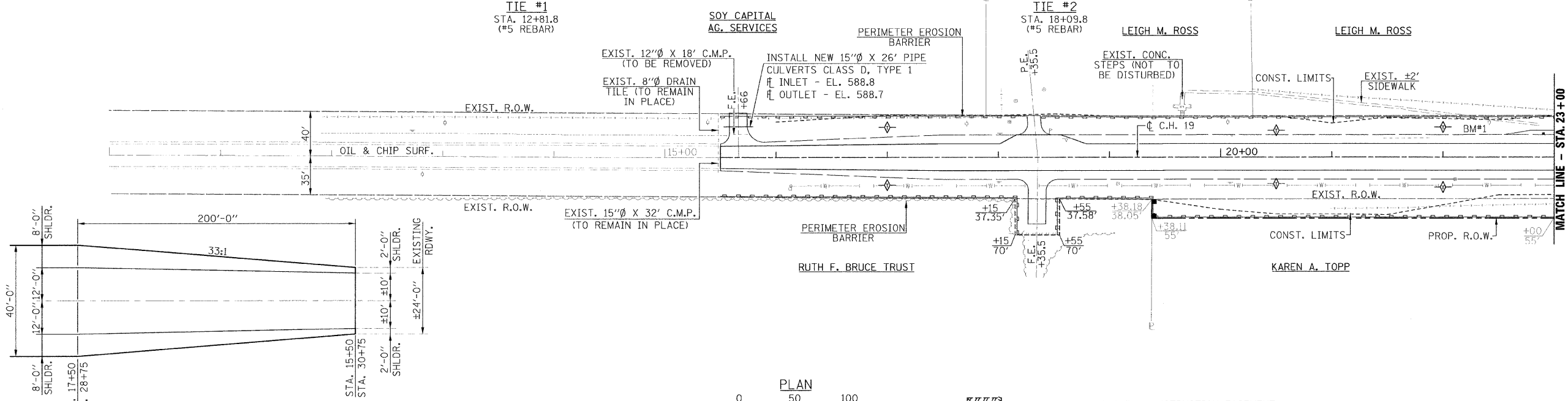


PLAN

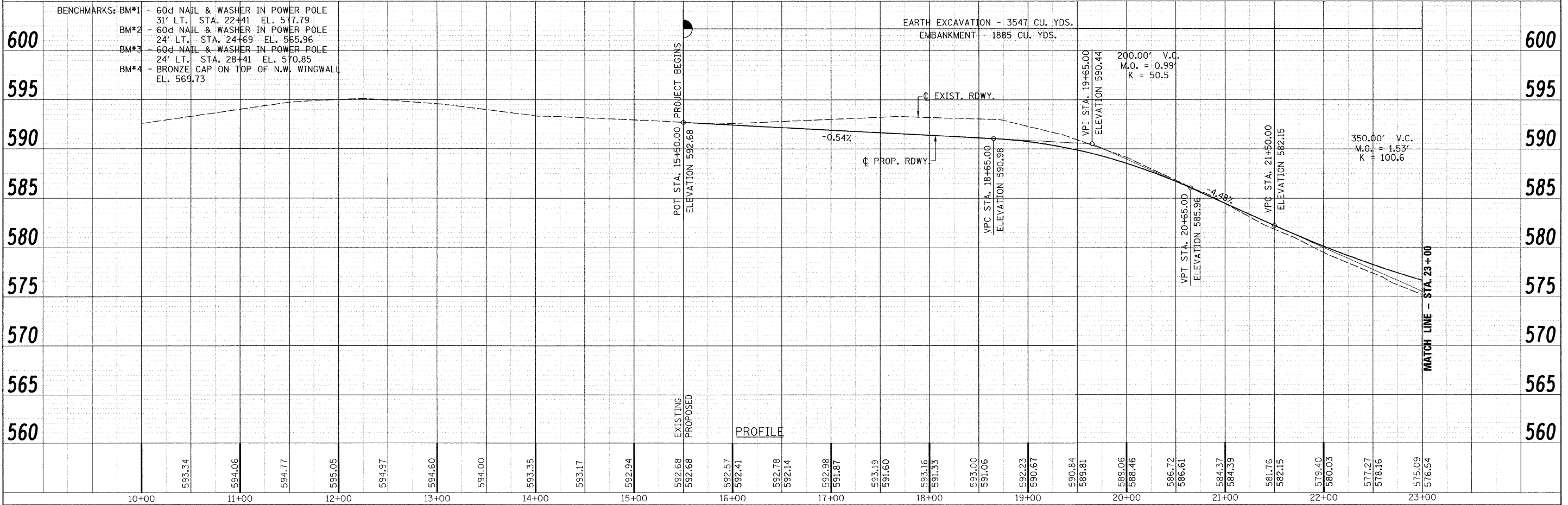
DATE	
BY	
DESIGNED	
CHECKED	
DRAWN	
IN CHARGE	

PROFILE

DATE	
BY	
DESIGNED	
CHECKED	
DRAWN	
IN CHARGE	



INDICATES TEMPORARY CONSTRUCTION EASEMENT



593.34	594.06	594.77	595.05	594.97	594.60	594.00	593.35	593.17	592.94	592.68	592.68	592.57	592.41	592.78	592.14	592.98	591.87	593.19	591.60	593.16	591.33	593.00	591.06	592.23	590.67	590.84	589.81	589.06	588.46	586.72	586.61	584.37	584.39	581.76	582.15	579.40	580.03	577.27	578.16	575.09	576.54				
10+00	11+00	12+00	13+00	14+00	15+00	16+00	17+00	18+00	19+00	20+00	21+00	22+00	23+00																																

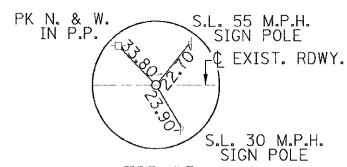
**Allen Henderson & Associates, Inc.**  
 Civil and Structural Engineers Springfield, IL.  
 62703 Phone: (217)544-8033 IL Design Firm  
 No. 184-001907

PLAN & PROFILE

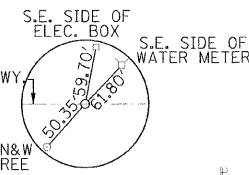
SCALE: SHEET NO. 6 OF 25 SHEETS STA. 15+50 TO STA. 23+00

C.H. RTE.	SECTION	COUNTY	TOTAL SHEETS	SHEET NO.
19	07-00055-01-BR	SANGAMON	25	6
CONTRACT NO. 93483				
FED. ROAD DIST. NO. ILLINOIS FED. AID PROJECT				

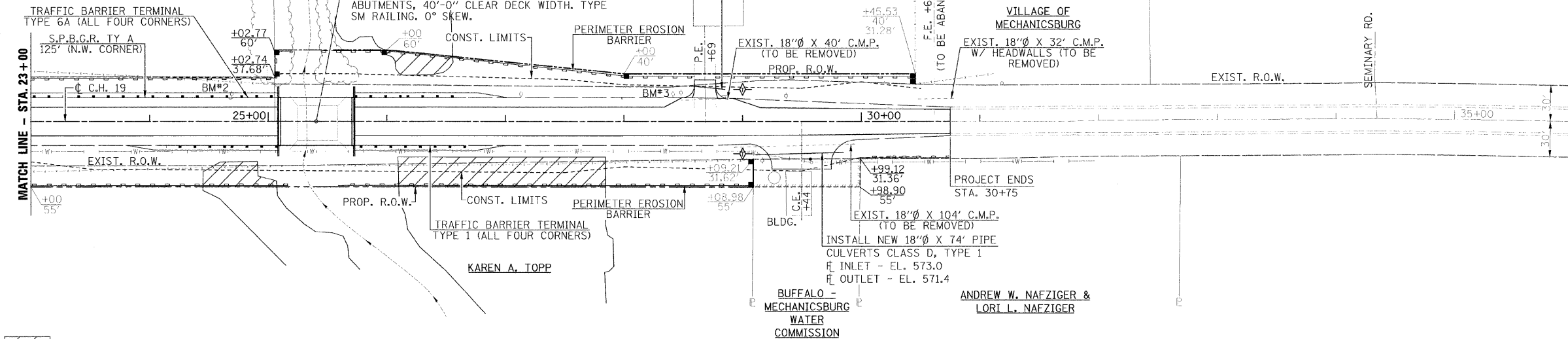
SECTION 26, T.16 N. R.3W. 3rd P.M.



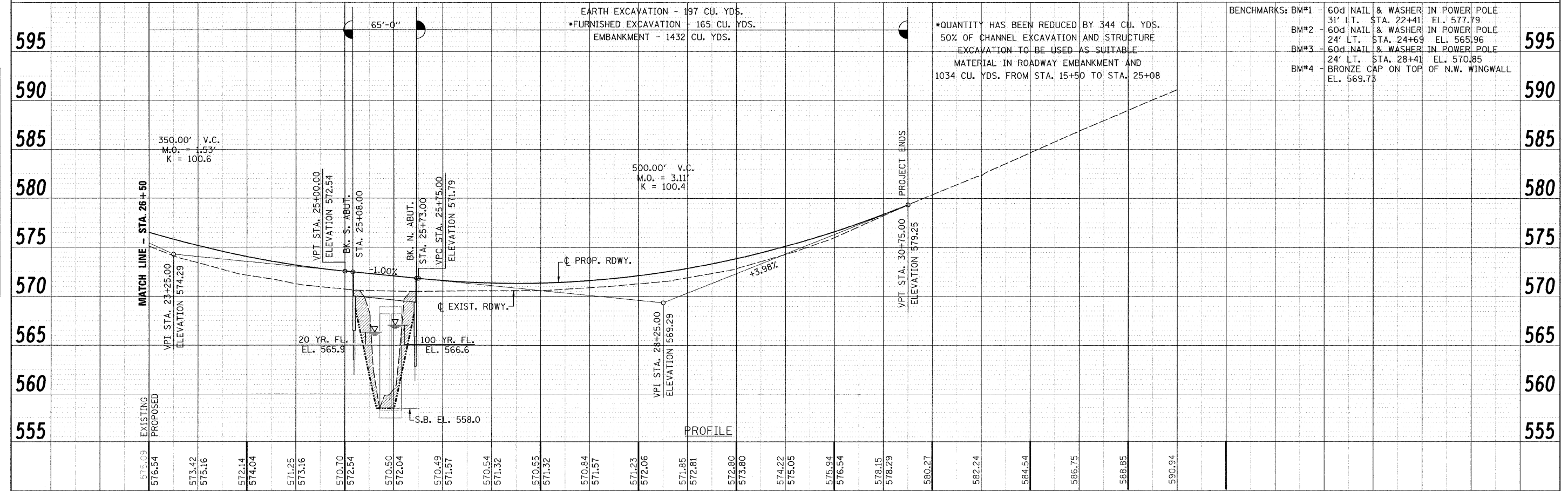
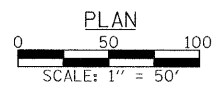
TIE #3  
STA. 26+67.0  
(#5 REBAR)



TIE #4  
STA. 30+65.3  
(#5 REBAR)



/// - DENOTES IMPACTED WETLAND AREA  
 [Hatched Box] - INDICATES TEMPORARY CONSTRUCTION EASEMENT



EARTH EXCAVATION - 197 CU. YDS.  
 \*FURNISHED EXCAVATION - 165 CU. YDS.  
 EMBANKMENT - 1432 CU. YDS.

\*QUANTITY HAS BEEN REDUCED BY 344 CU. YDS.  
 50% OF CHANNEL EXCAVATION AND STRUCTURE EXCAVATION TO BE USED AS SUITABLE MATERIAL IN ROADWAY EMBANKMENT AND 1034 CU. YDS. FROM STA. 15+50 TO STA. 25+08

BENCHMARKS: BM#1 - 60d NAIL & WASHER IN POWER POLE 31' LT. STA. 22+41 EL. 577.79  
 BM#2 - 60d NAIL & WASHER IN POWER POLE 24' LT. STA. 24+69 EL. 565.96  
 BM#3 - 60d NAIL & WASHER IN POWER POLE 24' LT. STA. 28+41 EL. 570.85  
 BM#4 - BRONZE CAP ON TOP OF N.W. WINGWALL EL. 569.75

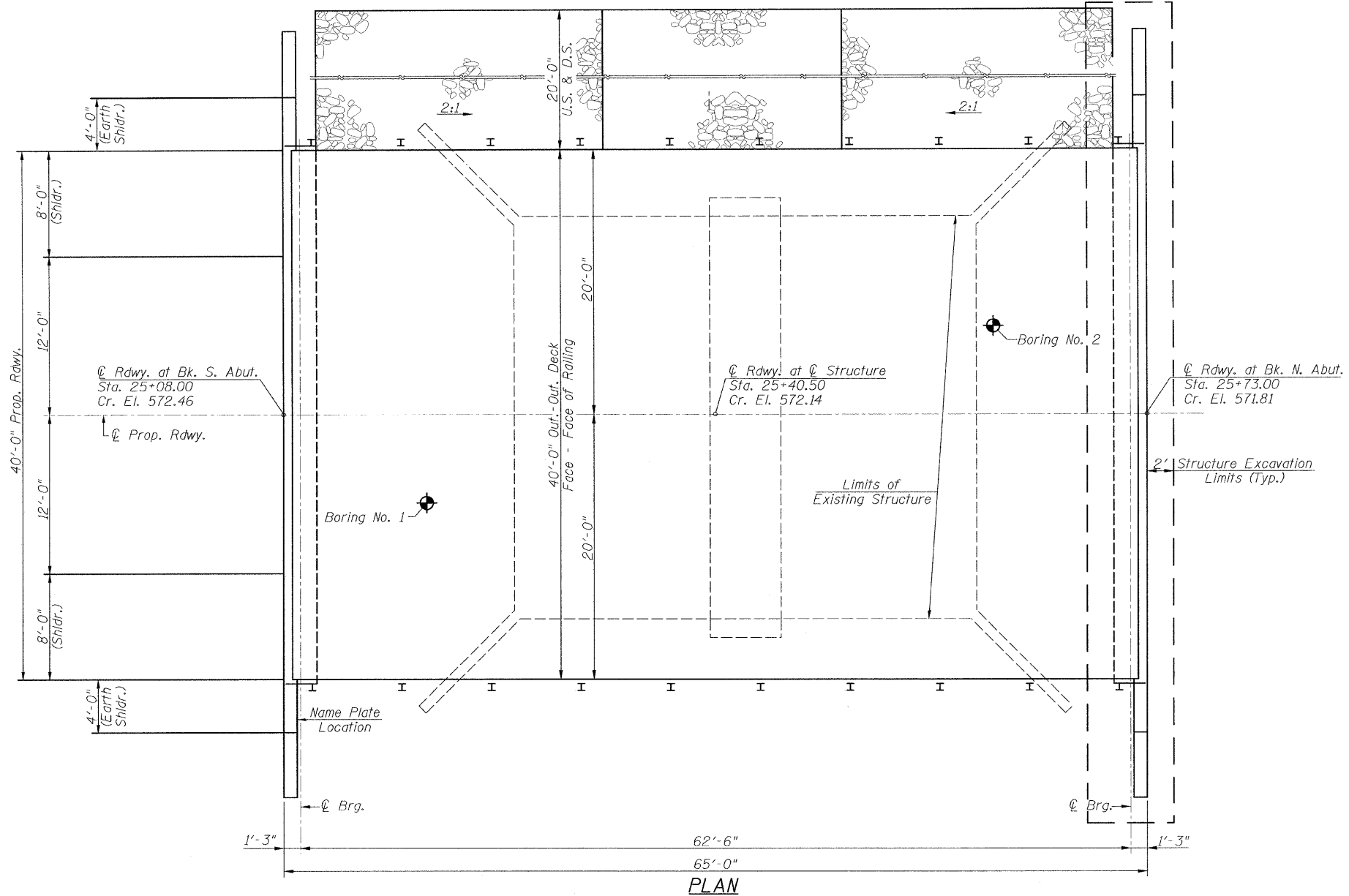
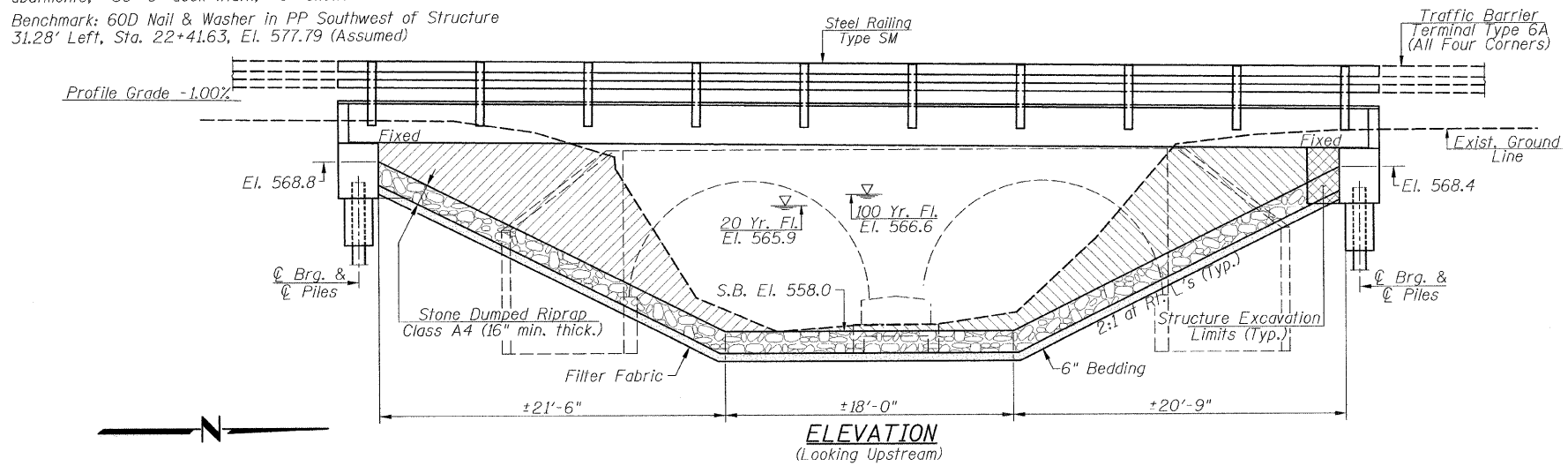
PLAN

DATE	
BY	
DESIGNED	
CHECKED	
DRAWN	
DATE	

PROFILE

DATE	
BY	
DESIGNED	
CHECKED	
DRAWN	
DATE	

Existing Structure 084-2003: Two multi-plate arch culverts. ±35'-0" Bk.-Bk. abutments, ±30'-0" deck width, ±0° skew.  
 Benchmark: 60D Nail & Washer in PP Southwest of Structure  
 31.28' Left, Sta. 22+41.63, El. 577.79 (Assumed)



USER NAME = #USER#	DESIGNED - ---	REVISED - ---
PLOT SCALE = #SCALE#	DRAWN - ---	REVISED - ---
PLOT DATE = #DATE#	CHECKED - ---	REVISED - ---
	DATE - ---	REVISED - ---

**Allen Henderson & Associates, Inc.**  
 Civil and Structural Engineers Springfield, IL  
 62703 Phone: (217)544-8033 IL Design Firm  
 No. 184-001907

ITEM	UNIT	SUPER	SUB	TOTAL
Channel Excavation	Cu. Yd.			542
Stone Dumped Riprap, Class A4	Ton			389
Filter Fabric	Sq. Yd.			578
Removal of Existing Structures	Each			1
Structure Excavation	Cu. Yd.			147
Concrete Structures	Cu. Yd.		43.2	43.2
Concrete Encasement	Cu. Yd.			4.2
Precast Prestressed Concrete Deck Beams (27" Depth)	Sq. Ft.	2547		2547
Reinforcement Bars	Pound		5030	5030
Steel Railing Type SM	Foot	130		130
Furnishing Steel Piles HP 12x53	Foot		480	480
Driving Piles	Foot		480	480
Test Pile, Steel HP 12x53	Each		2	2
Name Plates	Each		1	1
Waterproofing Membrane System	Sq. Yd.	289		289
Portland Cement Mortar Fairing Course	Foot	144		144
Hot Mix Asphalt Surface Course, Mix C N50	Ton	32		32

Flood	Freq. Yr.	Q C.F.S.	Opening Sq. Ft.		Natural H.W.E.	Head - ft.		Headwater El.	
			Exist.	Prop.		Exist.	Prop.	Exist.	Prop.
Design	20	1167	180	267	565.9	0.4	0.0	566.3	565.9
Base	100	1781	201	303	566.6	1.4	0.1	568.0	566.7
Exist. Overtop.	Greater than 500 years								
Prop. Overtop.	Greater than 500 years								
Max. Calc.	500	2392	217	329	567.1	3.4	0.3	570.5	567.4

GRIFFITH CREEK  
 STA. 25+40.50  
 F.A.S. ROUTE 635  
 BUILT 20 BY  
 SANGAMON COUNTY  
 SECTION 07-00055-01-BR  
 STR. NO. 084-3509 LOADING HL-93

**NAME PLATE**  
 (Standard 515001)

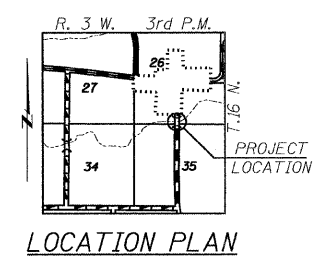
**LOADING HL-93**  
 Allow 50#/sq. ft. for future wearing surface.

**DESIGN SPECIFICATIONS**  
 2007 AASHTO LRFD Bridge Design Specifications, 4th Edition

**DESIGN STRESSES**  
**FIELD UNITS**  
 $f'_c = 3500$  psi  
 $f_y = 60000$  psi (Reinforcement)

**PRECAST PRESTRESSED UNITS**  
 $f'_c = 6000$  psi  
 $f'_{ci} = 5000$  psi  
 $f_{pu} = 270000$  psi ( $\frac{1}{2}$ " low lax strands)  
 $f_{pbt} = 201960$  psi ( $\frac{1}{2}$ " low lax strands)

**GENERAL NOTES**  
 See Proposal for Boring Data.  
 Reinforcement bars shall conform to the requirements of ASTM A706, Grade 60. See Special Provisions.  
 The layout of the riprap slope wall may be varied to suit ground conditions in the field as determined by the Engineer.  
 The contractor shall drive one test pile in a permanent location at each abutment as directed by the Engineer in the field prior to ordering the remainder of piles.



I certify that to the best of my knowledge, information and belief, this bridge design is structurally adequate for the design loading shown on the plans. The design is an economical one for the style of structure and complies with requirements of the current "A.A.S.H.T.O. LRFD Bridge Design Specifications."  
 Allen Henderson 1-22-09  
 Expiration Date 11/30/2010

**GENERAL PLAN AND ELEVATION**

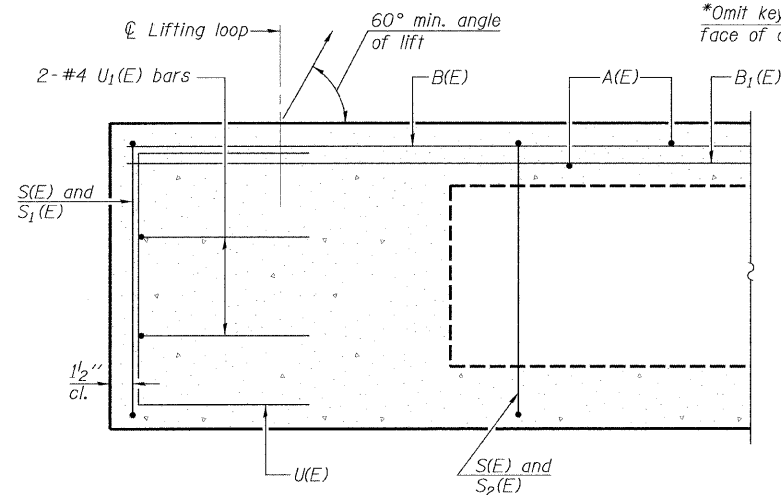
SCALE: NONE SHEET NO. 8 OF 25 SHEETS STA. 7+00.00 TO STA. 11+60.00

C.H. RTE.	SECTION	COUNTY	TOTAL SHEETS	SHEET NO.
19	07-00055-01-BR	SANGAMON	25	8

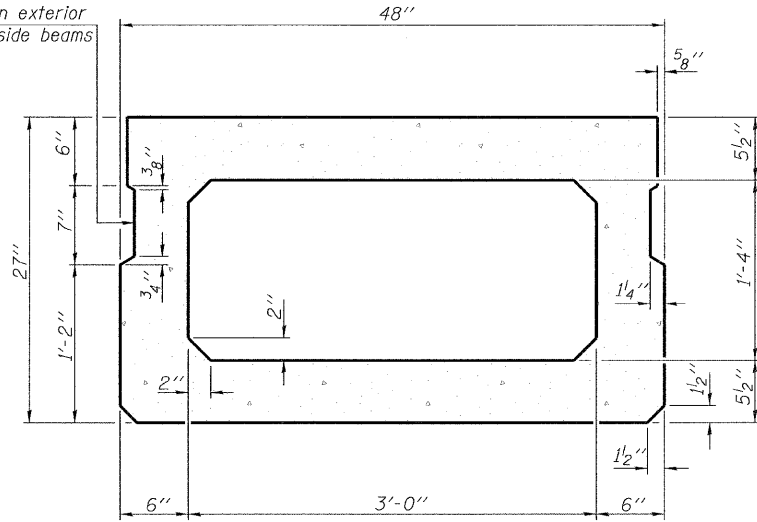
CONTRACT NO. 3483

FED. ROAD DIST. NO. [ ] ILLINOIS FED. AID PROJECT

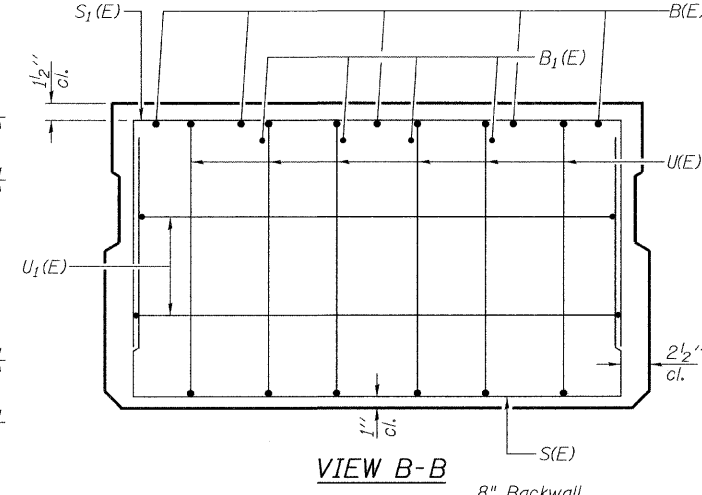




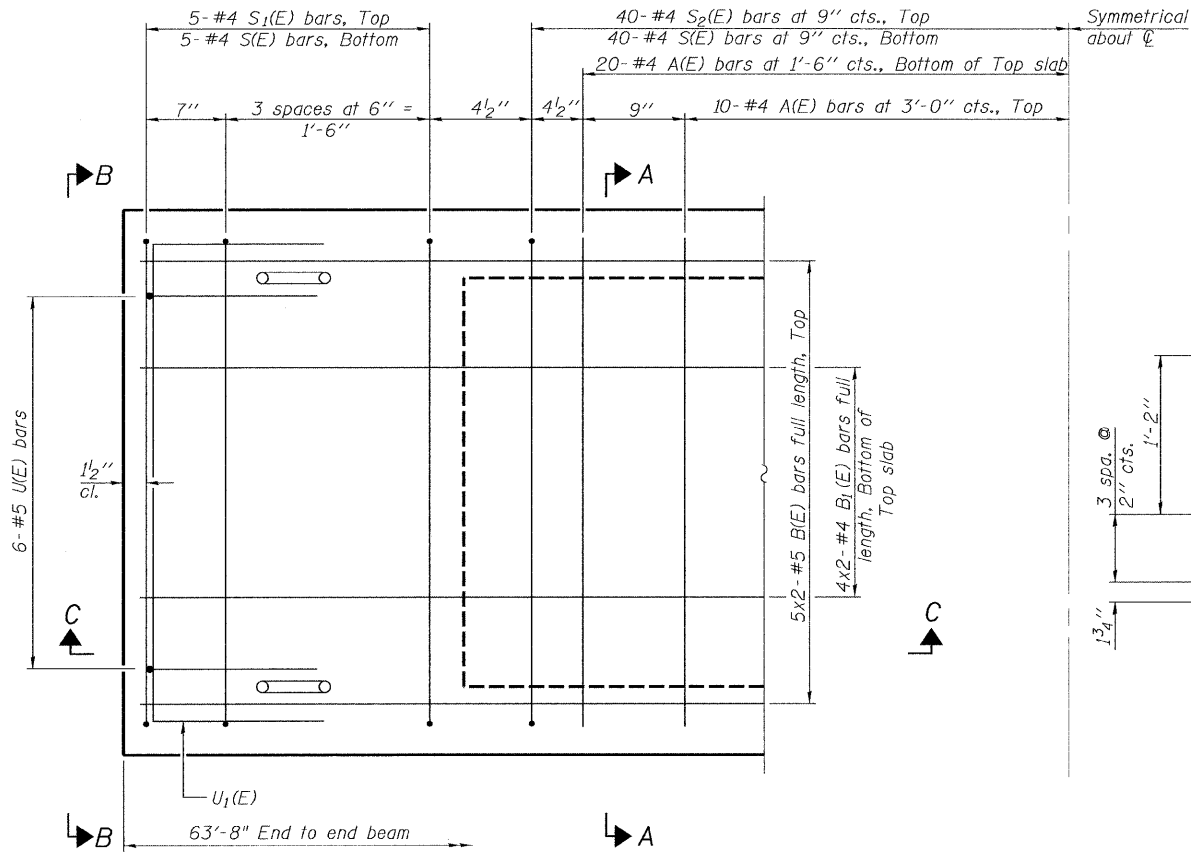
SECTION C-C



SECTION A-A  
(Showing dimensions)



VIEW B-B

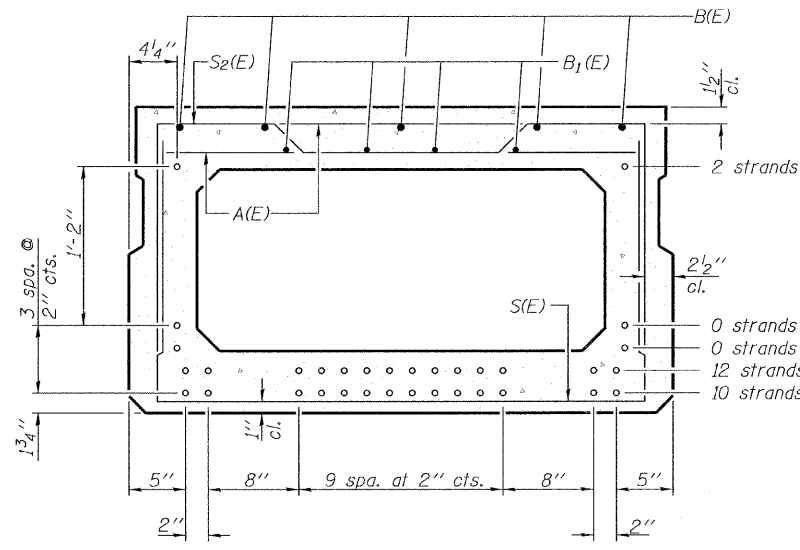


PLAN VIEW

**MIN. BAR LAP**  
 #5 Bar = 2'-2"  
 #4 Bar = 1'-8"

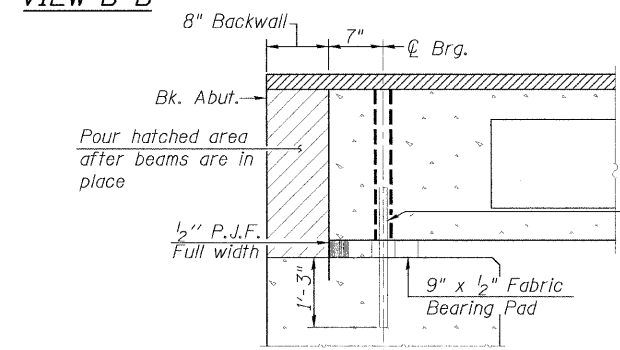
Note: Spacing of S(E) and S2(E) bars may be adjusted up to 4" in the immediate area of the transverse tie diaphragms to miss the block outs for the transverse ties.

\*Rail post anchor devices (See Sheet No. 11) to be cast into exterior face of outside beams.

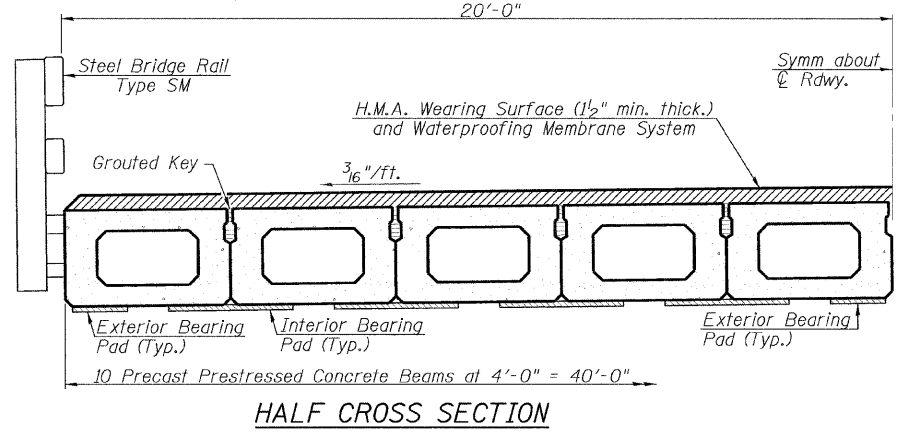


SECTION A-A

(Showing reinforcement and permissible strand locations)  
 Note: Place the number of strands specified in each row symmetrically about the centerline of beam in the permissible strand locations shown.



SECTION THRU ABUTMENT  
(At Right Angles)



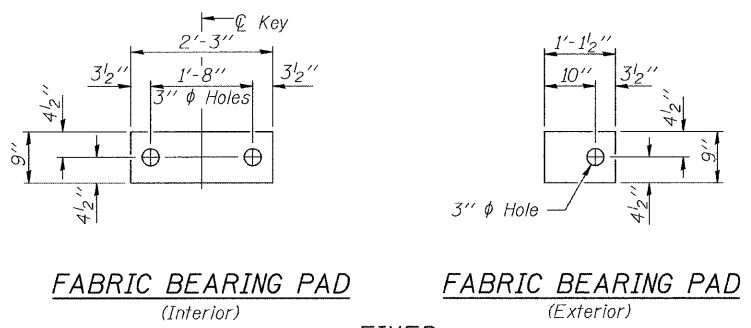
HALF CROSS SECTION

**BAR LIST  
ONE BEAM ONLY**

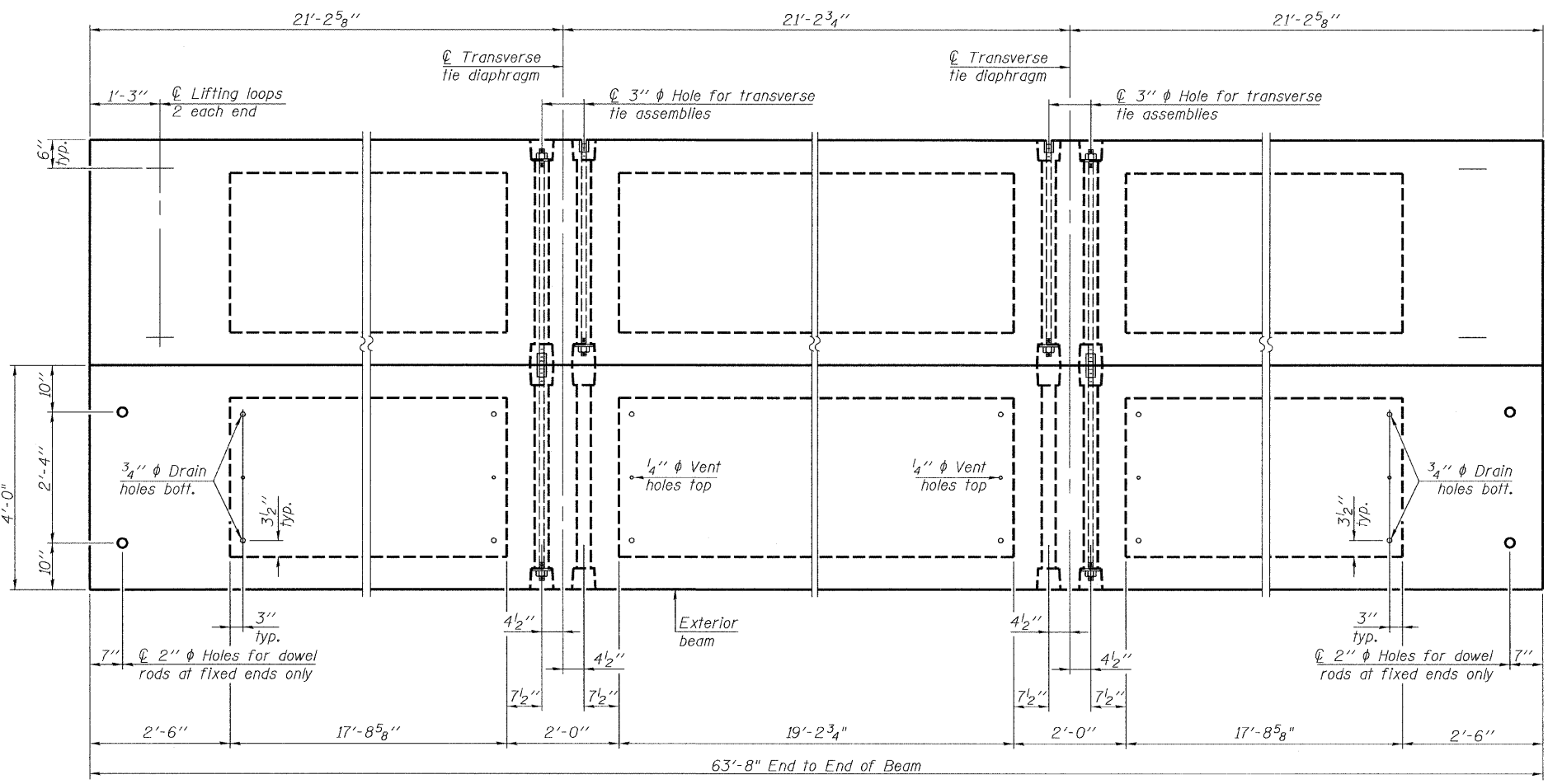
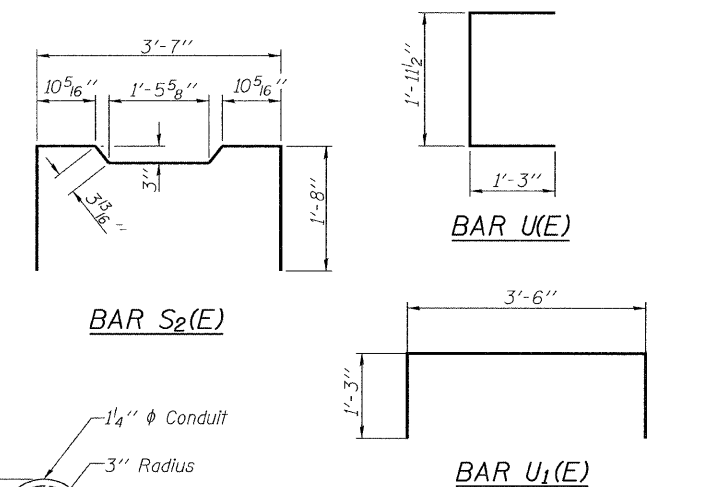
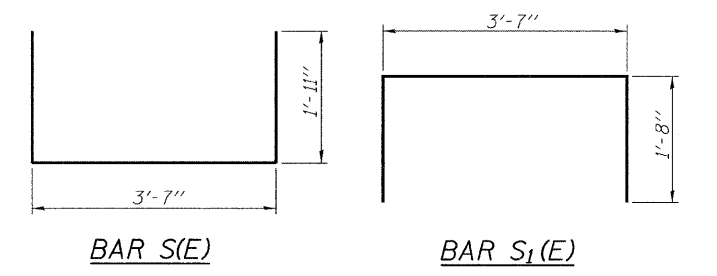
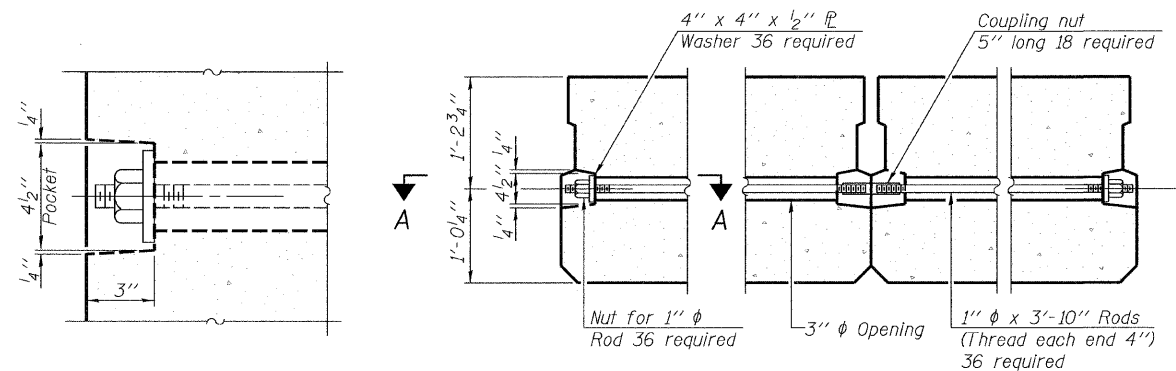
(For information only)

Bar	No.	Size	Length	Shape
A(E)	59	#4	3'-7"	—
B(E)	10	#5	32'-9"	—
B1(E)	8	#4	32'-9"	—
S(E)	89	#4	7'-5"	┌
S1(E)	10	#4	6'-11"	┌
S2(E)	79	#4	7'-2"	┌
U(E)	12	#5	4'-6"	┌
U1(E)	4	#4	6'-0"	┌

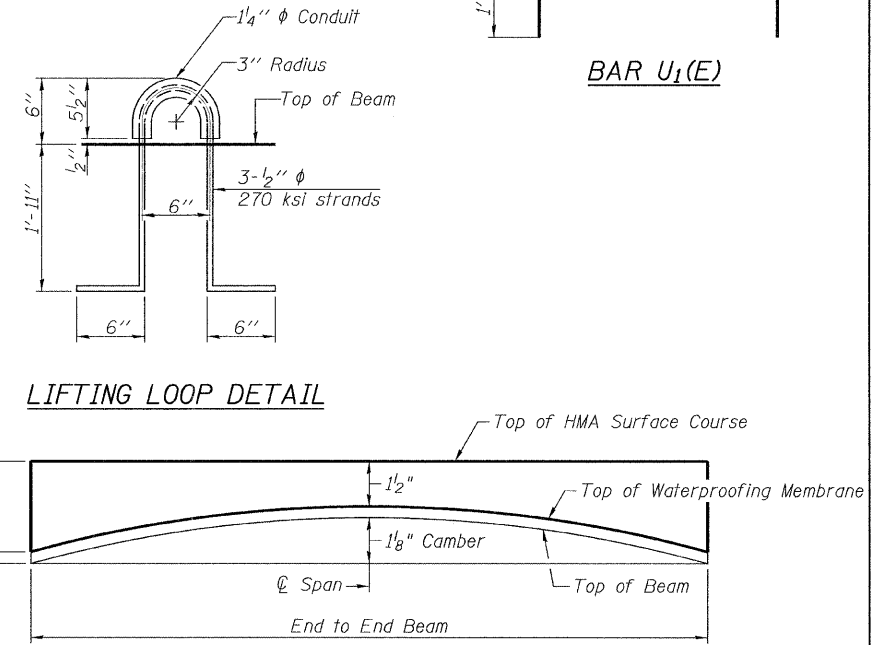
Note: See sheet 10 of 25 for additional details and Bill of Material.



**FIXED**  
Note: Omit holes when using expansion bearings.



**PLAN VIEW**



**HMA SURFACE COURSE PROFILE & ANTICIPATED CAMBER DIAGRAM SPAN**

Note: Connect beams in pairs with the transverse tie configuration shown.

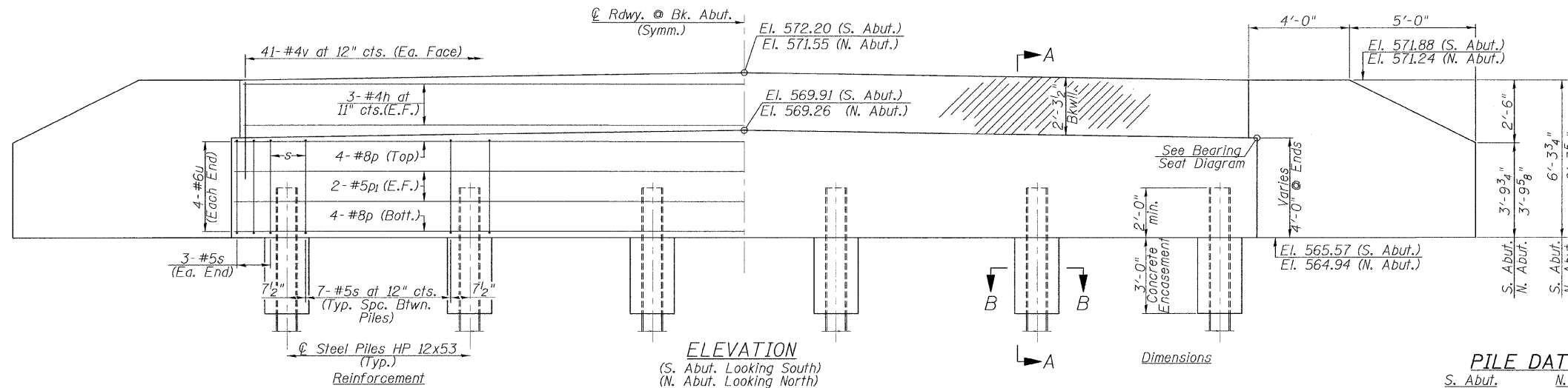
**NOTES**  
Prestressing steel shall be uncoated high strength, low relaxation 7-wire strand, Grade 270. The nominal diameter shall be 1/2" and the nominal cross-sectional area shall be 0.153 sq. in. The 1" φ rods in the transverse tie assembly shall be tightened to a snug fit and the threads set. Pockets on exterior faces of bridge shall be filled with grout after transverse tie assembly is in place.  
Reinforcement bars shall conform to ASTM A 706, Grade 60. (See Special Provisions).  
Two 1/8" fabric adjusting shims of the dimensions of the exterior bearing pad shall be provided for each bearing pad location.  
A minimum 2 1/2" φ lifting pin shall be used to engage the lifting loops during handling.  
Corrosion Inhibitor, per Article 1020.05(b)(12) and 1021.06 of the Standard Specifications, shall be used in the concrete for precast prestressed concrete deck beams.  
Compressive strength of prestressed concrete, f'c, shall be 6000 psi.  
Compressive strength of prestressed concrete at release, f'ci, shall be 5000 psi.

**BILL OF MATERIAL**

Precast Prestressed Conc. Deck Bms. (27" depth)	Sq. Ft.	2547
Portland Cement Mortar Fairing Course	Foot	144
Hot Mix Asphalt Surface Course, Mix C N50	Ton	32

PD-2748-OD 5-16-08



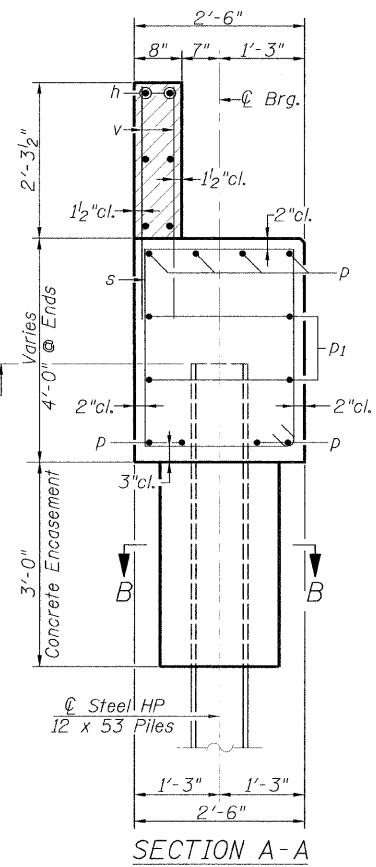


**ELEVATION**  
(S. Abut. Looking South)  
(N. Abut. Looking North)

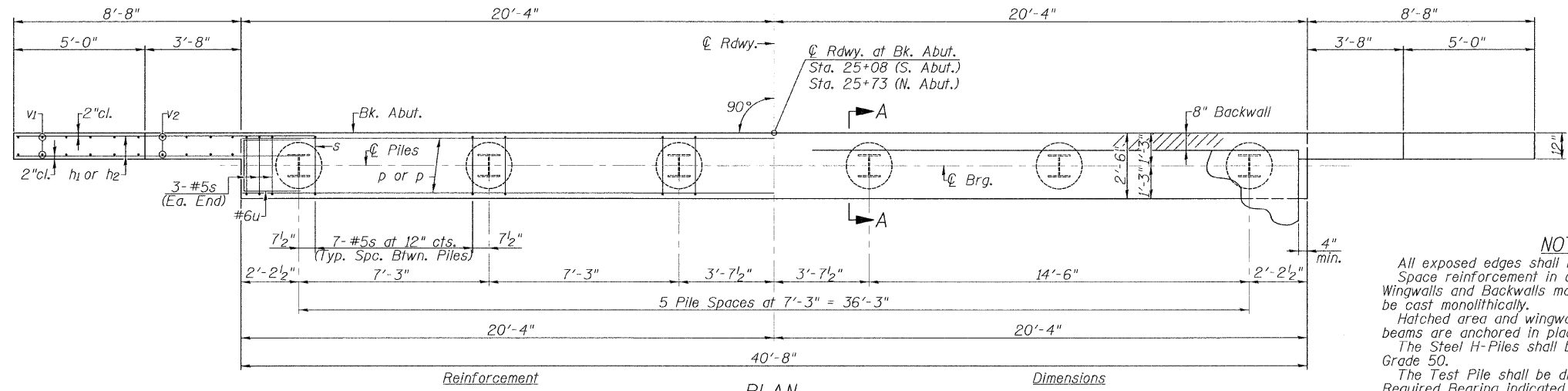
**PILE DATA**

	S. Abut.	N. Abut.
Pile Type & Size:	Steel HP 12x53	Steel HP 12x53
Nominal Required Bearing:	418 Kips	418 Kips
Factored Resistance Available:	209 Kips	209 Kips
Estimated Pile Length:	53'	43'
Number of Production Piles:	5	5
Number of Test Piles:	1	1

Cutoff Elev.  
567.6 (S. Abut.)  
566.9 (N. Abut.)



**SECTION A-A**

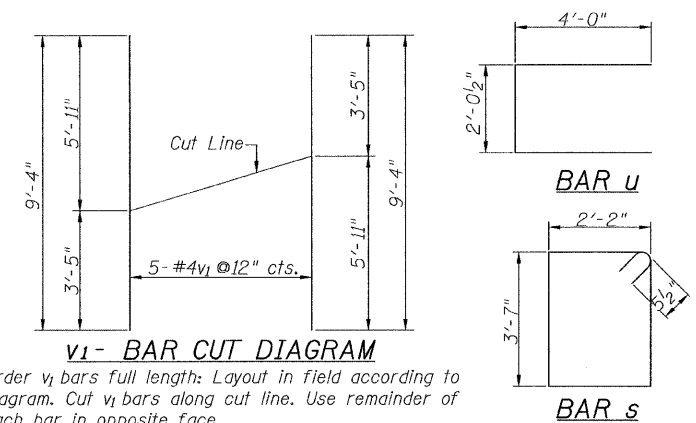


**PLAN**

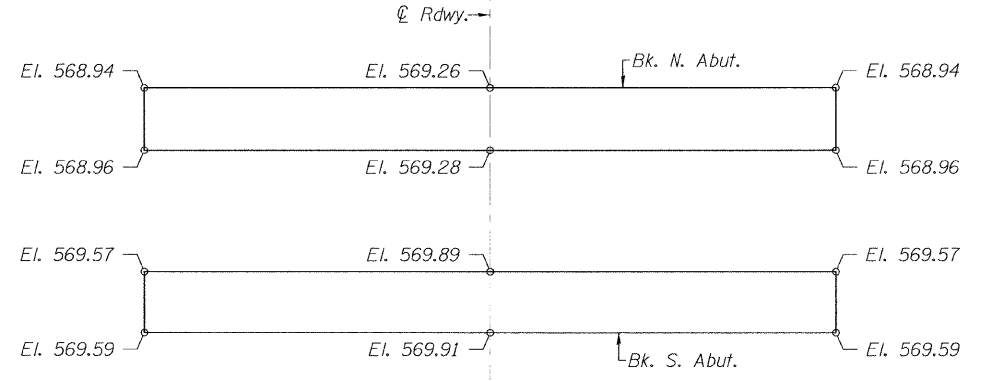
**NOTES**  
All exposed edges shall have standard 3/4" chamfer.  
Space reinforcement in cap to miss beam anchor dowels.  
Wingwalls and Backwalls may, at the contractor's option, be cast monolithically.  
Hatched area and wingwalls shall be poured after deck beams are anchored in place.  
The Steel H-Piles shall be according to AASHTO M270, Grade 50.  
The Test Pile shall be driven to 110 percent of the Nominal Required Bearing indicated in the pile data information.

**TWO ABUTMENTS  
BILL OF MATERIAL**

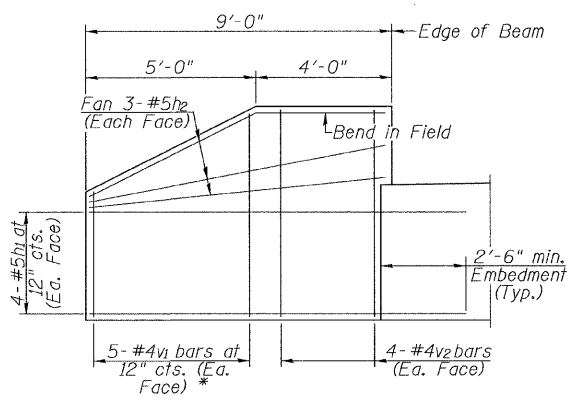
BAR	NO.	SIZE	LENGTH	SHAPE
h	12	#4	47'-8"	—
h1	32	#5	11'-0"	—
h2	24	#5	8'-8"	—
p	16	#8	40'-4"	—
p1	8	#5	40'-4"	—
s	82	#5	12'-5"	□
u	16	#6	10'-1"	□
v	164	#4	4'-1"	—
v1	20	#4	9'-4"	—
v2	32	#4	5'-11"	—
Concrete Structures			Cu. Yd.	4.3.2
Reinforcement Bars			Pound	5030
Furnishing Steel Piles HP 12x53			Foot	480
Driving Piles			Foot	480
Test Pile Steel HP 12x53			Each	2
Concrete Encasement			Cu. Yd.	4.2
Structure Excavation			Cu. Yd.	147



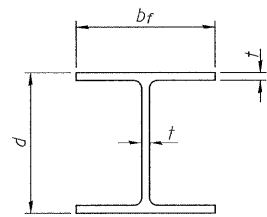
**v1 - BAR CUT DIAGRAM**  
Order v1 bars full length; Layout in Field according to diagram. Cut v1 bars along cut line. Use remainder of each bar in opposite face.



**BEARING SEAT DIAGRAM**

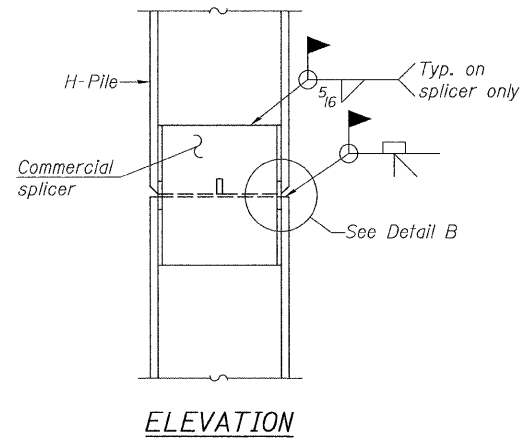


**WINGWALL ELEVATION**  
(Showing Reinforcement)  
\* See v1 - bar cut diagram

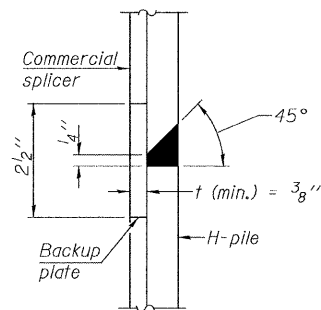


**STEEL PILE TABLE**

Designation	Depth d	Flange width br	Web and Flange thickness t	Encasement diameter A
HP 14x117	14 1/4"	14 7/8"	13/16"	30"
x102	14"	14 3/4"	1/16"	30"
x89	13 7/8"	14 3/4"	5/8"	30"
x73	13 5/8"	14 5/8"	1/2"	30"
HP 12x84	12 1/4"	12 1/4"	1/16"	24"
x74	12 3/8"	12 1/4"	5/8"	24"
x63	12"	12 3/8"	1/2"	24"
x53	11 3/4"	12"	7/16"	24"
HP 10x57	10"	10 1/4"	9/16"	24"
x42	9 3/4"	10 1/8"	7/16"	24"
HP 8x36	8"	8 1/8"	7/16"	18"

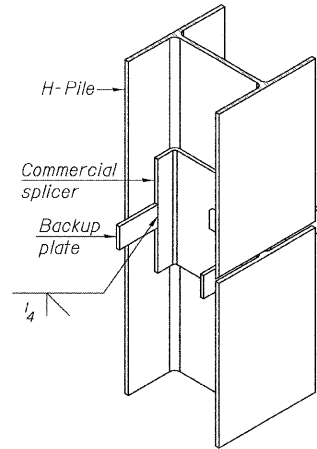


**ELEVATION**

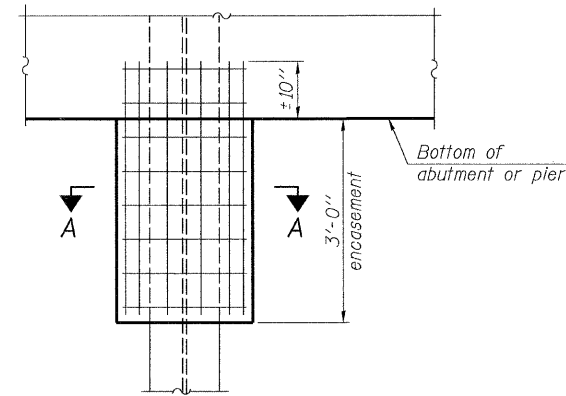


**DETAIL "B"**

**WELDED COMMERCIAL SPLICE**

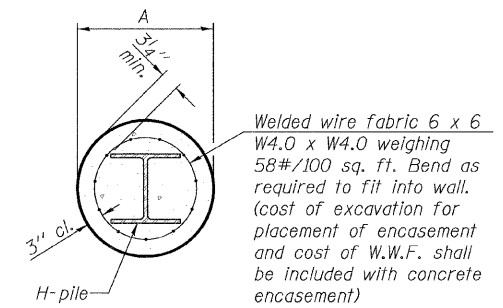


**ISOMETRIC VIEW**



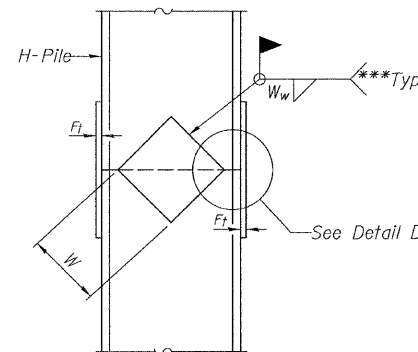
**ELEVATION**

**PILE ENCASEMENT**

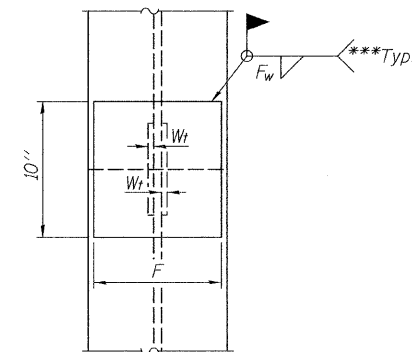


**SECTION A-A**

Note: Forms for encasement may be omitted when soil conditions permit.



**ELEVATION**

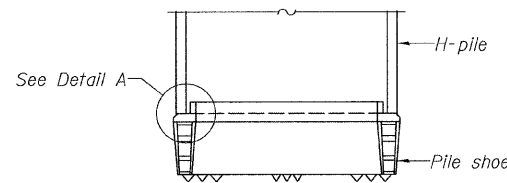


**END VIEW**

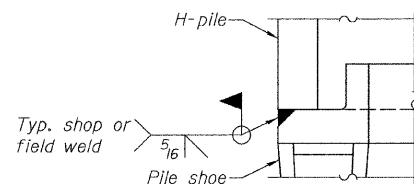
Designation	F	F <sub>t</sub>	F <sub>w</sub>	W	W <sub>t</sub>	W <sub>w</sub>
HP 14x117	12 1/2"	1"	7/8"	7 3/4"	5 8/8"	1/2"
x102	12 1/2"	7/8"	3/4"	7 3/4"	5 8/8"	1/2"
x89	12 1/2"	3/4"	1/16"	7 3/4"	5 8/8"	1/2"
x73	12 1/2"	5/8"	9/16"	7 3/4"	5 8/8"	1/2"
HP 12x84	10"	7/8"	1/16"	6 1/2"	5 8/8"	1/2"
x74	10"	7/8"	1/16"	6 1/2"	5 8/8"	1/2"
x63	10"	5/8"	1/2"	6 1/2"	1/2"	3/8"
x53	10"	5/8"	1/2"	6 1/2"	1/2"	3/8"
HP 10x57	8"	3/4"	9/16"	5 1/4"	1/2"	3/8"
x42	8"	5/8"	9/16"	5 1/4"	1/2"	3/8"
HP 8x36	7"	5/8"	7/16"	4 1/4"	1/2"	3/8"

**WELDED PLATE FIELD SPLICE**

Note: The steel H-piles shall be according to AASHTO M270 Grade 50.

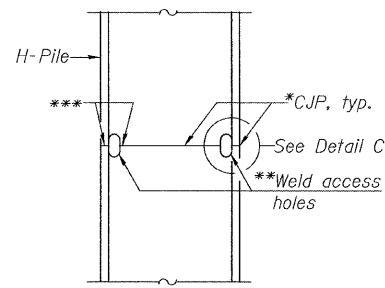


**ELEVATION**



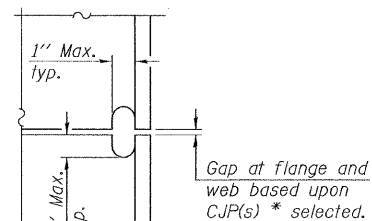
**DETAIL A**

**H-PILE SHOE ATTACHMENT**



**ELEVATION**

**COMPLETE PENETRATION WELD SPLICE**



**DETAIL C**

\*Use joint conforming to Figure 3.4 in AWS D1.1, Structure Welding Code-Steel.

\*\*Preparation per Fig. 5.2 in AWS D1.1, Structure Welding Code-Steel.

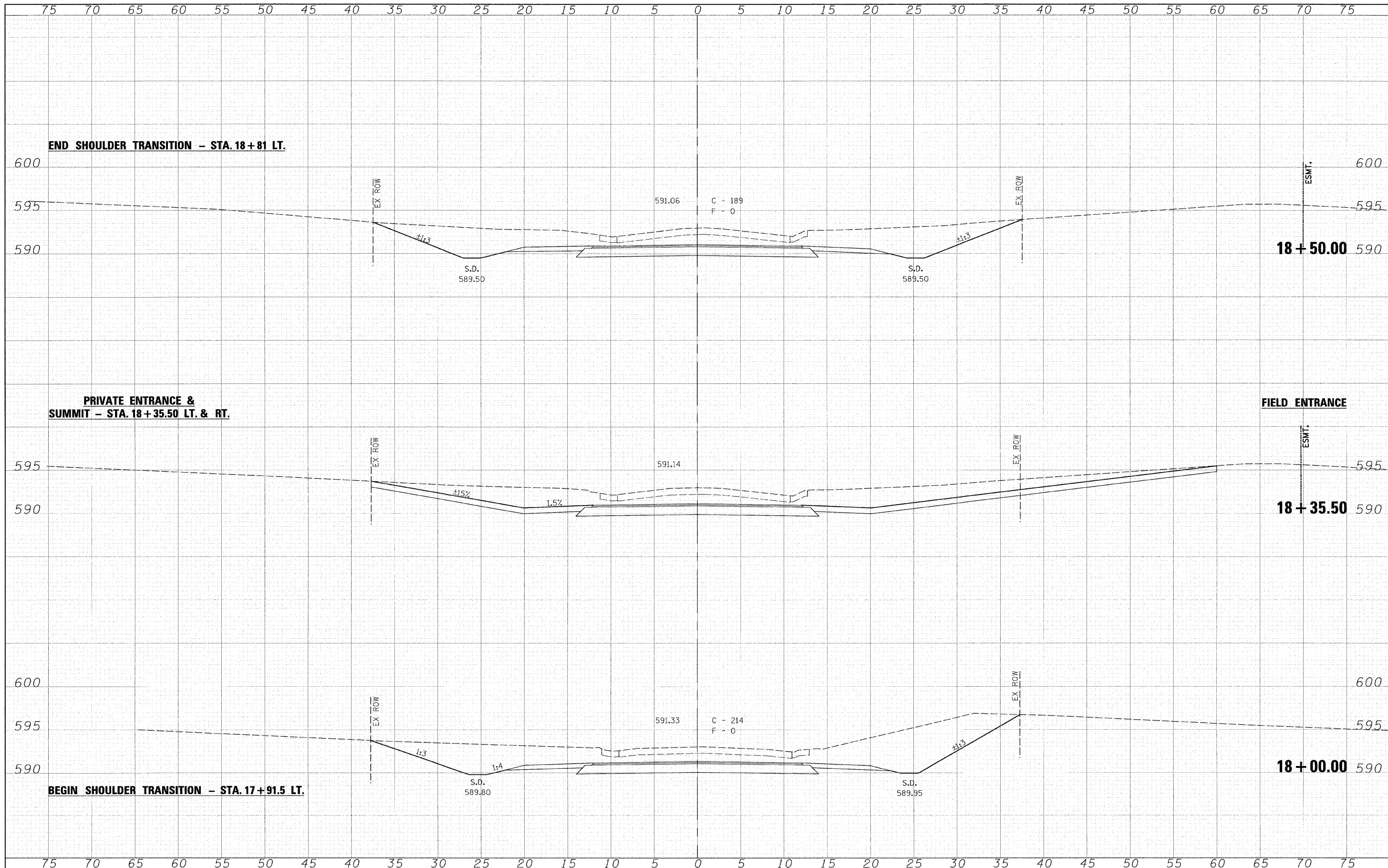
\*\*\*Interrupt welds 1/4" from end of each pile.





DATE: \_\_\_\_\_ BY: \_\_\_\_\_  
 SURVEYED: \_\_\_\_\_ PLOTTED: \_\_\_\_\_  
 NOTE BOOK: \_\_\_\_\_ AREAS CHECKED: \_\_\_\_\_  
 NO. \_\_\_\_\_

DATE: \_\_\_\_\_ BY: \_\_\_\_\_  
 SURVEYED: \_\_\_\_\_ PLOTTED: \_\_\_\_\_  
 NOTE BOOK: \_\_\_\_\_ AREAS CHECKED: \_\_\_\_\_  
 NO. \_\_\_\_\_



FILE NAME: \_\_\_\_\_

USER NAME: #USER#  
 PLOT SCALE: #SCA#  
 PLOT DATE: #DATE#

DESIGNED -  
 DRAWN -  
 CHECKED -  
 DATE -

REVISED -  
 REVISED -  
 REVISED -  
 REVISED -



**Allen Henderson & Associates, Inc.**  
 Civil and Structural Engineers Springfield, IL.  
 62703 Phone: (217)544-8033 IL Design Firm  
 No. 184-001907

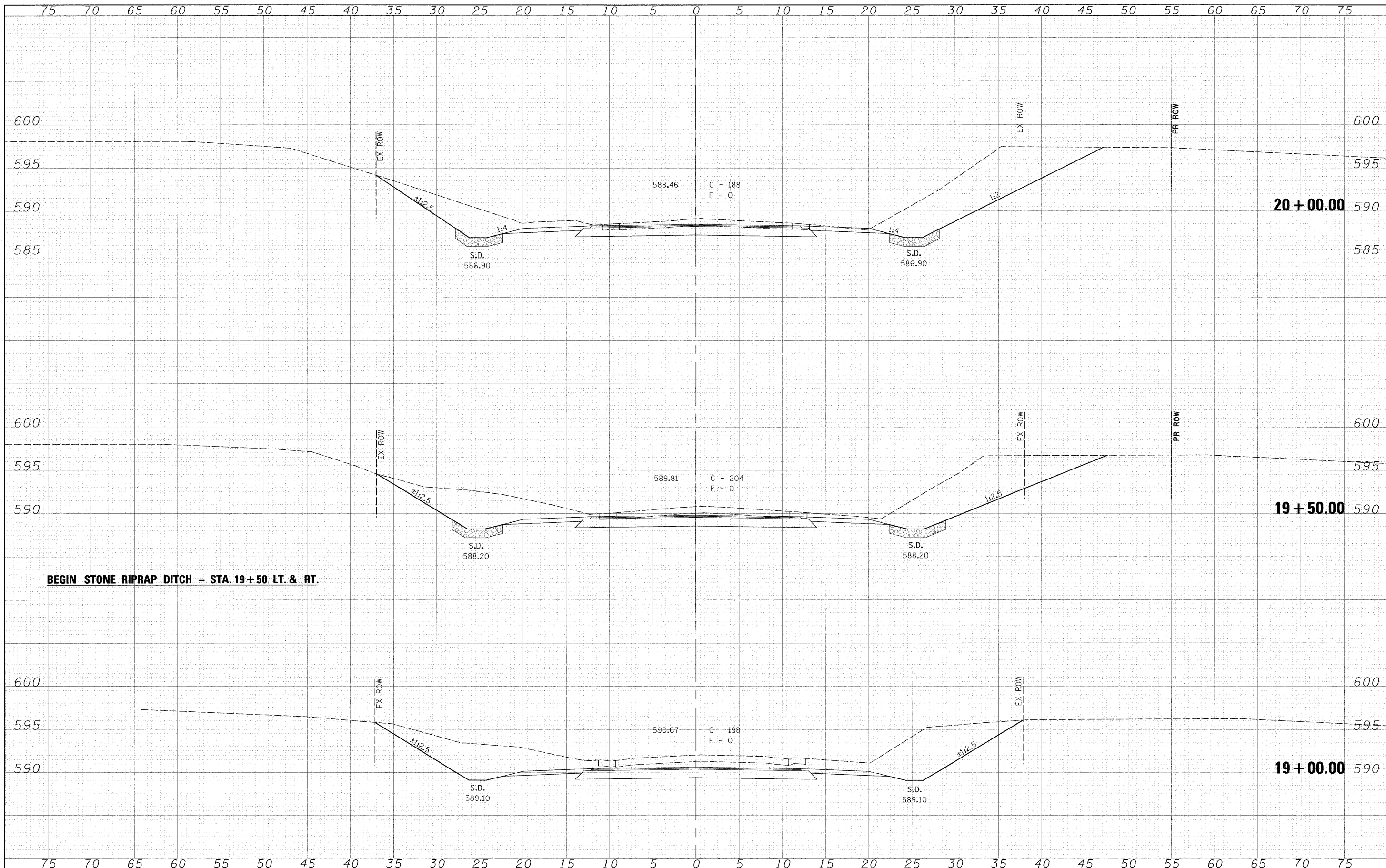
**CROSS SECTIONS**  
 SCALE: 1" = 5' SHEET NO. 14 OF 25 SHEETS STA. 18+00.00 TO STA. 18+50.00

C.H. RTE.	SECTION	COUNTY	TOTAL SHEETS	SHEET NO.
19	07-00055-01-BR	SANGAMON	25	16
FED. ROAD DIST. NO. ILLINOIS FED. AID PROJECT			CONTRACT NO. 93483	




FINAL SURVEY BY DATE  
 SURVEYED BY DATE  
 NOTE BOOK NO. DATE  
 AREAS CHECKED

ORIGINAL SURVEY BY DATE  
 SURVEYED BY DATE  
 NOTE BOOK NO. DATE  
 AREAS CHECKED



**BEGIN STONE RIPRAP DITCH - STA. 19+50 LT. & RT.**

FILE NAME	USER NAME = #USERS	DESIGNED -	REVISED -	 <b>Allen Henderson &amp; Associates, Inc.</b> Civil and Structural Engineers Springfield, IL. 62703 Phone: (217)544-8033 IL. Design Firm No. 184-001907	<b>CROSS SECTIONS</b>		C.H. RTE.	SECTION	COUNTY	TOTAL SHEETS	SHEET NO.
	PLOT SCALE = #SCALE*	DRAWN -	REVISED -		SCALE: 1" = 5'	SHEET NO. 14 OF 25 SHEETS	19	07-00055-01-BR	SANGAMON	25	17
	PLOT DATE = #DATE*	CHECKED -	REVISED -		STA. 19+00.00	TO STA. 20+00.00	CONTRACT NO. 93483				
		DATE -	REVISED -				FED. ROAD DIST. NO. ILLINOIS FED. AID PROJECT				

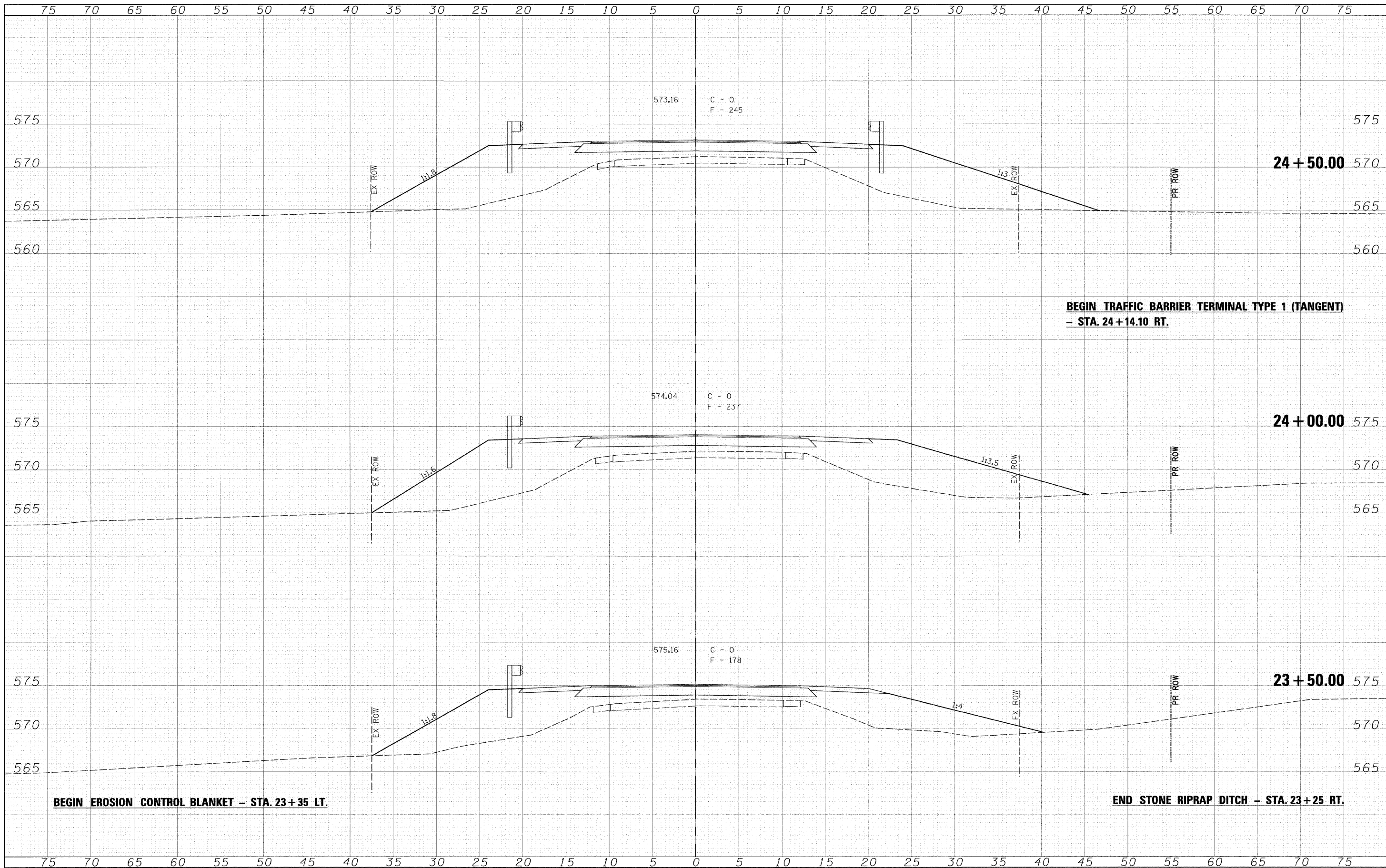
\*NOTES #1-13





DATE	
BY	
FINAL SURVEY	
NOTE BOOK	
NO.	

DATE	
BY	
ORIGINAL SURVEY	
NOTE BOOK	
NO.	



FILE NAME =	
-------------	--

USER NAME = #USER#	
PLOT SCALE = #SCALE#	
PLOT DATE = #DATE#	

DESIGNED -	
DRAWN -	
CHECKED -	
DATE -	

REVISED -	
REVISED -	
REVISED -	
REVISED -	



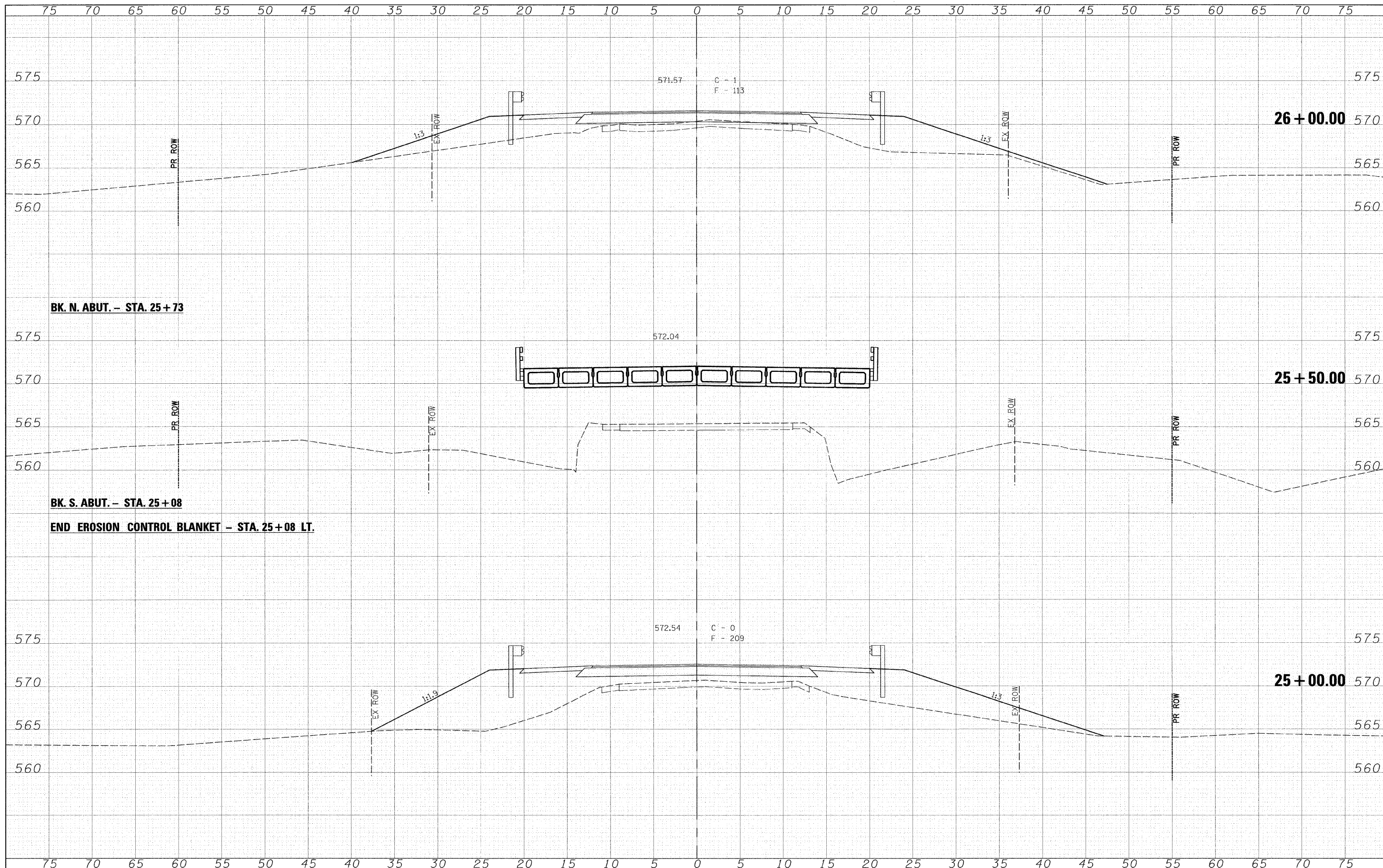
**Allen Henderson & Associates, Inc.**  
 Civil and Structural Engineers Springfield, IL.  
 62703 Phone: (217)544-8033 IL. Design Firm  
 No. 184-001907

<b>CROSS SECTIONS</b>			
SCALE: 1" = 5'	SHEET NO. 14 OF 25 SHEETS	STA. 23+50.00	TO STA. 24+50.00

C.H. RTE.	SECTION	COUNTY	TOTAL SHEETS	SHEET NO.
19	07-00055-01-BR	SANGAMON	25	20
FED. ROAD DIST. NO.		ILLINOIS FED. AID PROJECT		
		CONTRACT NO. 93483		

DATE	BY
REVIEWED	BY
DESIGNED	BY
DRAWN	BY
CHECKED	BY
DATE	

DATE	BY
REVIEWED	BY
DESIGNED	BY
DRAWN	BY
CHECKED	BY
DATE	



FILE NAME =

USER NAME = #USER#  
 FLOT SCALE = #SCALE#  
 FLOT DATE = #DATE#

DESIGNED  
 DRAWN  
 CHECKED  
 DATE

REVISED  
 REVISED  
 REVISED  
 REVISED



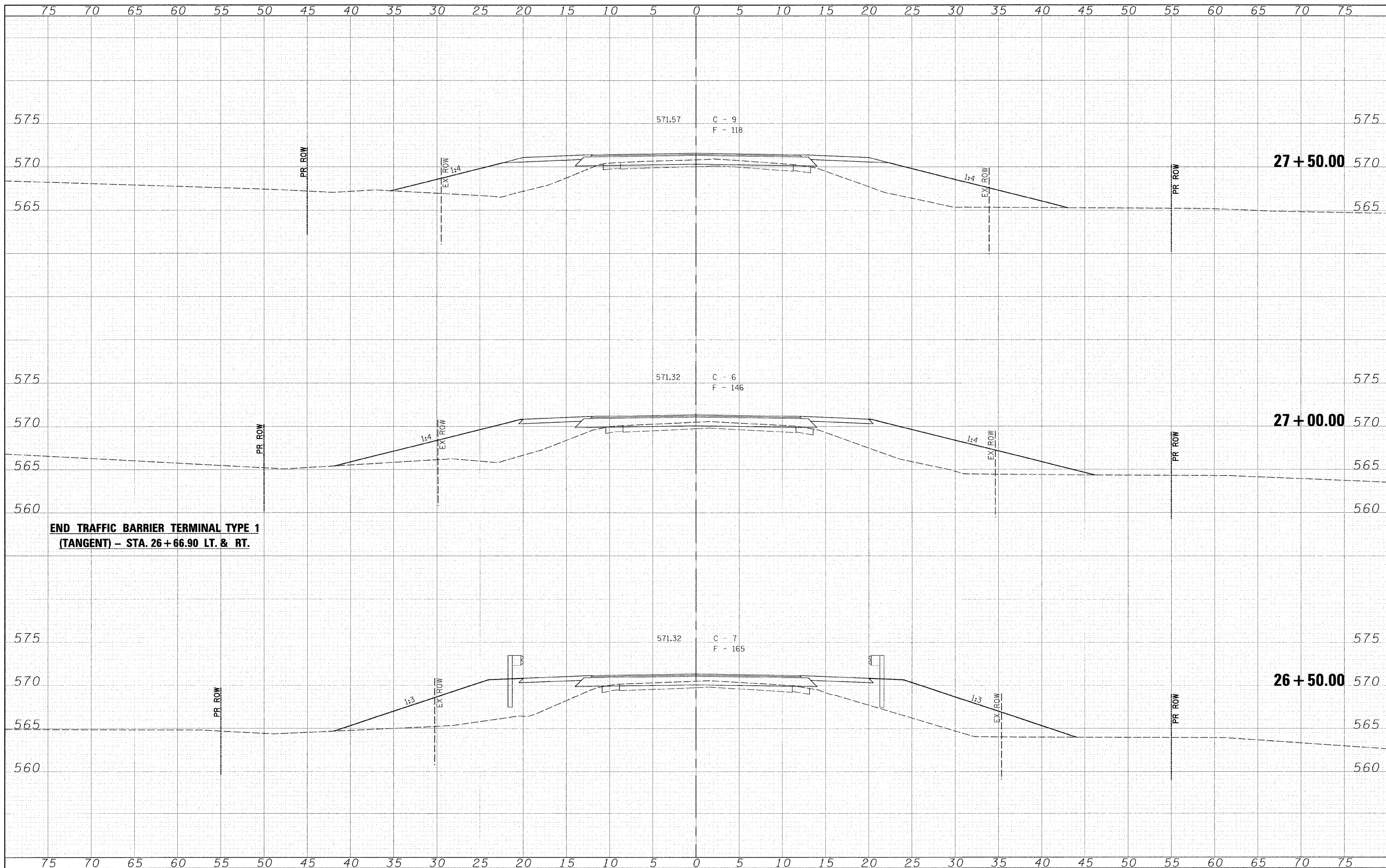
**Allen Henderson & Associates, Inc.**  
 Civil and Structural Engineers Springfield, IL.  
 62703 Phone: (217)544-8033 IL Design Firm  
 No. 184-001907

**CROSS SECTIONS**  
 SCALE: 1" = 5'  
 SHEET NO. 14 OF 25 SHEETS  
 STA. 25+00.00 TO STA. 26+00.00

C.H. RTE.	SECTION	COUNTY	TOTAL SHEETS	SHEET NO.
19	07-00055-01-BR	SANGAMON	25	21
FED. ROAD DIST. NO.			ILLINOIS/FED. AID PROJECT	
			CONTRACT NO. 93483	

FINAL SURVEY  
 SURVEYED \_\_\_\_\_ BY \_\_\_\_\_ DATE \_\_\_\_\_  
 PLOTTED \_\_\_\_\_  
 NOTE BOOK \_\_\_\_\_  
 AREAS \_\_\_\_\_  
 AREAS CHECKED \_\_\_\_\_

ORIGINAL SURVEY  
 SURVEYED \_\_\_\_\_ BY \_\_\_\_\_ DATE \_\_\_\_\_  
 PLOTTED \_\_\_\_\_  
 NOTE BOOK \_\_\_\_\_  
 AREAS \_\_\_\_\_  
 AREAS CHECKED \_\_\_\_\_



FILE NAME = \_\_\_\_\_  
 USER NAME = #USER# \_\_\_\_\_  
 PLOT SCALE = #SCALE# \_\_\_\_\_  
 PLOT DATE = #DATE# \_\_\_\_\_

DESIGNED - \_\_\_\_\_  
 DRAWN - \_\_\_\_\_  
 CHECKED - \_\_\_\_\_  
 DATE - \_\_\_\_\_

REVISED - \_\_\_\_\_  
 REVISED - \_\_\_\_\_  
 REVISED - \_\_\_\_\_  
 REVISED - \_\_\_\_\_

DESIGNED - \_\_\_\_\_  
 DRAWN - \_\_\_\_\_  
 CHECKED - \_\_\_\_\_  
 DATE - \_\_\_\_\_



**Allen Henderson & Associates, Inc.**  
 Civil and Structural Engineers Springfield, IL.  
 62703 Phone: (217)544-8033 IL Design Firm  
 No. 184-001907

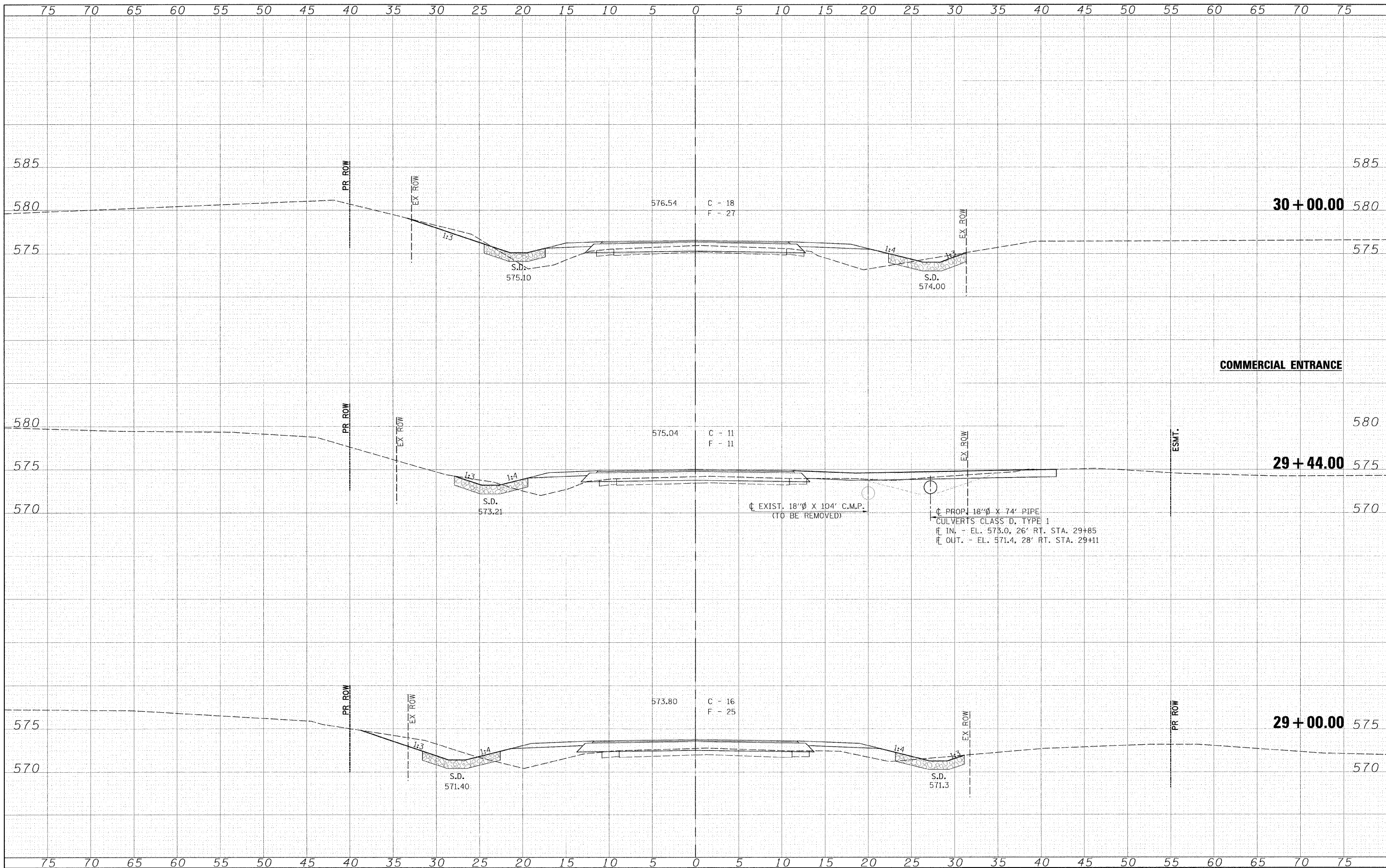
**CROSS SECTIONS**  
 SCALE: 1" = 5' SHEET NO. 14 OF 25 SHEETS STA. 26+50.00 TO STA. 27+50.00

C.H. RTE.	SECTION	COUNTY	TOTAL SHEETS	SHEET NO.
19	07-00055-01-BR	SANGAMON	25	22
FED. ROAD DIST. NO. ILLINOIS FED. AID PROJECT			CONTRACT NO. 93483	



DATE	
BY	
FINAL SURVEY	
NO. OF SHEETS	
NOTE BOOK	
AREAS CHECKED	
NO.	

DATE	
BY	
ORIGINAL SURVEY	
NO. OF SHEETS	
NOTE BOOK	
AREAS CHECKED	
NO.	



FILE NAME	
USER NAME = #USER#	
DESIGNED	
DRAWN	
CHECKED	
DATE	

REVIS	
REVIS	
REVIS	
REVIS	

REVIS	
REVIS	
REVIS	
REVIS	

REVIS	
REVIS	
REVIS	
REVIS	



**Allen Henderson & Associates, Inc.**  
 Civil and Structural Engineers Springfield, IL.  
 62703 Phone: (217)544-8033 IL Design Firm  
 No. 184-001907

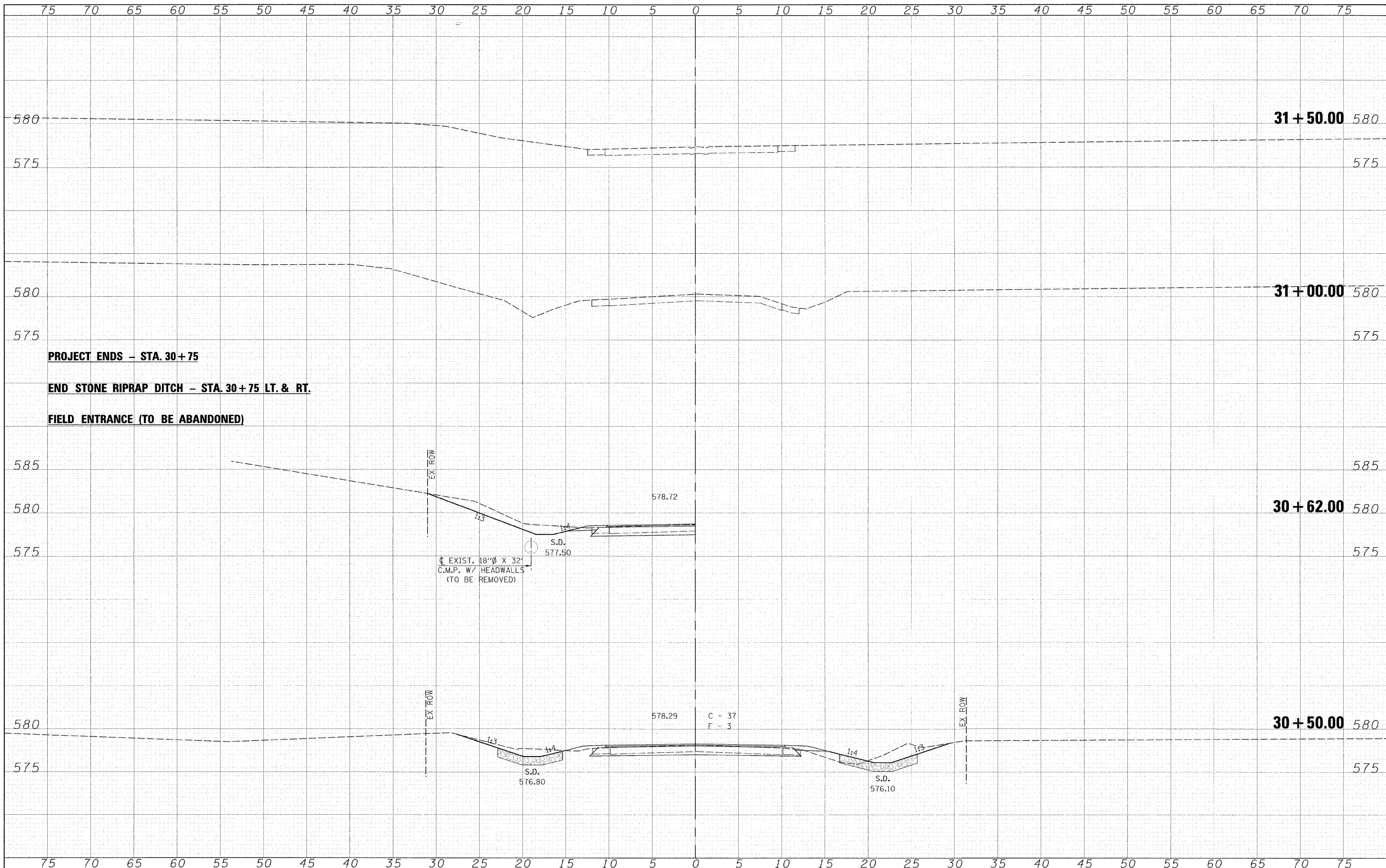
<b>CROSS SECTIONS</b>			
SCALE: 1" = 5'	SHEET NO. 14 OF 25 SHEETS	STA. 29+00.00	TO STA. 30+00.00

C.H. RTE.	SECTION	COUNTY	TOTAL SHEETS	SHEET NO.
19	07-00055-01-BR	SANGAMON	25	24
FED. ROAD DIST. NO.		ILLINOIS FED. AID PROJECT		
		CONTRACT NO. 93483		



FINAL SURVEY BY DATE  
 SURVEYED BY DATE  
 NOTE BOOK NO.  
 TEMPLATE AREAS CHECKED

ORIGINAL SURVEY BY DATE  
 SURVEYED BY DATE  
 NOTE BOOK NO.  
 TEMPLATE AREAS CHECKED



FILE NAME =

USER NAME = #USER#  
 PLOT SCALE = #SCALE#  
 PLOT DATE = #DATE#

DESIGNED -  
 DRAWN -  
 CHECKED -  
 DATE -

REVISED -  
 REVISED -  
 REVISED -  
 REVISED -



**Allen Henderson & Associates, Inc.**  
 Civil and Structural Engineers Springfield, IL.  
 62703 Phone: (217)544-8033 IL Design Firm  
 No. 184-001907

**CROSS SECTIONS**  
 SCALE: 1" = 5'  
 SHEET NO. 14 OF 25 SHEETS  
 STA. 30+50.00 TO STA. 31+50.00

C.H. RTE.	SECTION	COUNTY	TOTAL SHEETS	SHEET NO.
19	07-00055-01-BR	SANGAMON	25	25
FED. ROAD DIST. NO. [ILLINOIS] FED. AID PROJECT CONTRACT NO. 93483				